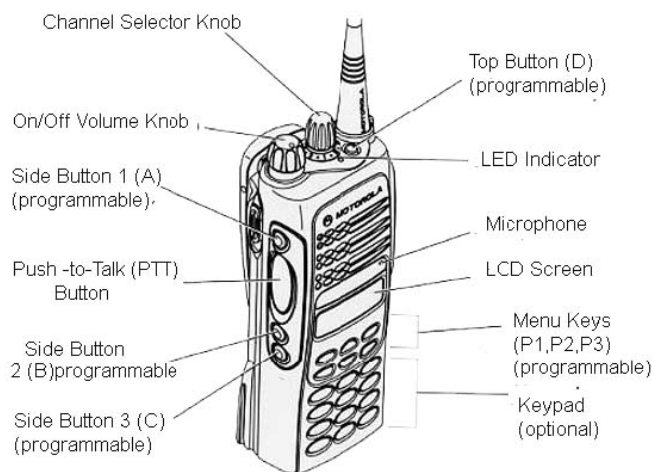


Hot Zone Radio

Motorola HT 1250 Professional
March 2010

NOTE: Guides are to be used by trained personnel only and DO NOT replace the manufacturer's operations or technical manuals. These guides were developed by field personnel for utilization by EPA and their contractors and are helpful in quick start-up and operations. Various limitations have been identified through the experience of the development group. Different makes, models, and updates to this equipment may change the limitations. It is recommended that calibration, maintenance, and use be recorded in a log book. If you have any changes or revisions please email one of the following:
stevenson.peter@epa.gov, boykin.michael@epa.gov,
chong.margaret@epa.gov, kroone.janice@epa.gov,
zintak.leonard@epa.gov.



Uses:

The intrinsically safe Motorola HT 1250 offers a full menu of advanced signaling features including paging or calling selective groups. The radio can be used to store phone numbers, call lists and radio IDs for easy access. The portable radio can be utilized as a two-way to maintain contact between people in various working locations up to five miles depending on terrain. It can also be used for emergency signaling and is equipped with an emergency button for alerting a dispatcher. It is capable of connecting with telephone lines, so it can be used as a phone and can store phone numbers as well. Information can be sent and received via tone or digital signals. The Motorola HT1250 also functions as an alarm clock.

Limitations:

- Strength of frequency.
- Maximum distance at which signals can reach between radios.
- Battery Life.

Quick Start-up and Operation:

- Ensure that the battery is fully charged. *Note the green light when the radio is docked in the charger.
- Select a zone to use (See "Selecting a Zone" in this guide).

Note: EPA radios have only one zone which is pre-programmed into the radios.

- Set all radios to the same channel. The channels will also be indicated on the LED screen.
- To turn the radio "on," turn the On/Off knob clockwise. This knob will also adjust the volume.

- If the power-up is successful, the Self-Test Pass Tone



(a double beep) will be heard and the LED will briefly turn green.

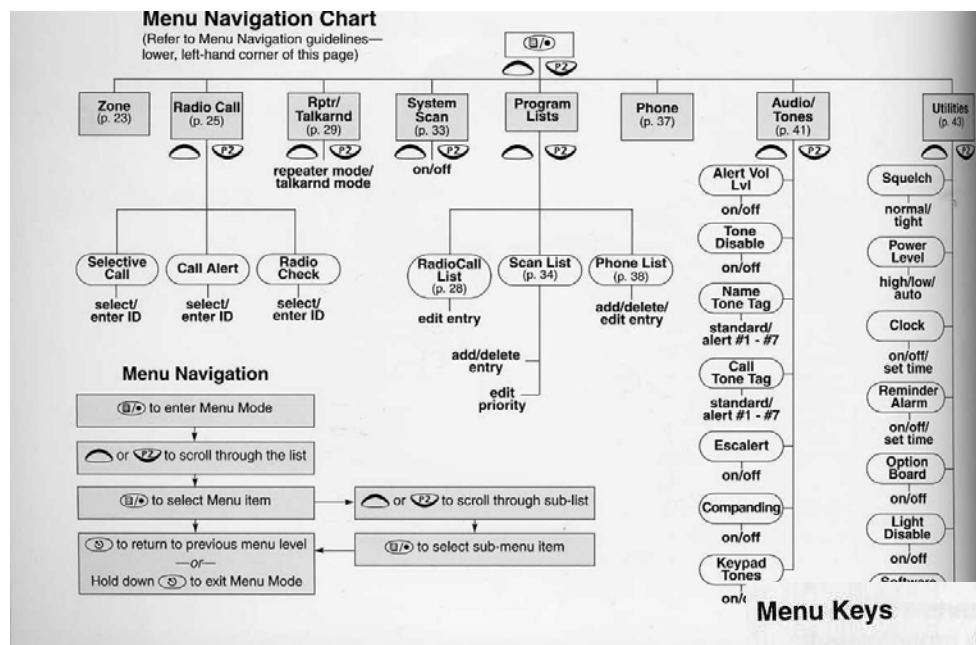


- If it fails, the Self-Test Fail Tone will be heard.
- Press and hold the push-to-talk (PTT) button to send a message. The PTT button is the large button located on the side of the radio.
- Release the button to listen to a transmission.
- While sending a message, hold the microphone 1 to 2 inches away from your mouth and speak clearly.
- Perform a radio test with all personnel who are using radios for communication.

Using the Envoy Radiocom Accessory:

- Remove the protective plate covering the side connector port by unscrewing the bottom screw with a flathead screwdriver. Do not unscrew the screw all the way out of the protective cover.
- Plug the radio connector cord, attached to the Radiocom accessory, into the side connector port located on the portable radio then loosely screw down.
- Plug the earpiece cord into the main unit of the accessory and screw down. The earpiece should be placed close to the ear.
- The volume, channel, and zone are controlled from the portable radio.
- If desired, turn the voice amplifier on, by switching the metal power knob, located on the Envoy Radiocom accessory's main unit, to 'On'. If the power is not turned on, the amplifier and LED will not function.
- To send a transmission with the Envoy Radiocom set-up, press the large, round Push-to-Talk (PTT) button located on the Radiocom accessory. The LED will turn from red to off while the transmission is in progress.
- The set-up can be used as a two-way radio system with or without a respirator. (See the Envoy Radiocom Accessory manual for installation instructions with a respirator.)
- The Envoy Radiocom Accessory requires two AAA batteries in the main unit.

Menu Selections:



Selecting a Zone:

A zone is a group of up to 16 channels. To access a channel in a zone,

a zone must first be selected.

- Press the Menu/Select button to enter Menu Mode.
- Press the up or down arrows until Zone appears on the screen.
- Press the Menu/Select button to select.
- Use the up and down arrow keys until the desired zone name is found.
- Press the Menu/Select button to select the zone.

Note: The EPA uses only one zone, so only one zone is available for use on these radios. However, to utilize more zones, these radios can be programmed for more zones with the use of additional hardware and software.

Selecting a Radio Channel:

The radio offers 128 channels (8 zones of 16 channels each)

- Select the appropriate zone if required.
- Turn the 'Channel Selector' knob clockwise or counterclockwise until the desired channel is reached, as shown on the LCD display.

Radio Check:

This feature is used to determine if a radio is within range without disturbing the user of the radio.

- Press the Menu/Select button to enter the Menu Mode.
- Use the arrow keys until Radio Call is displayed on the LCD.
- Use the Menu/Select Button to select.
- Use the up or down arrows until Radio Check is displayed.
- Push the Menu/Select key to select.
- Press the up or down arrow keys to locate the desired ID in the radio call list.
- Press the PTT button. Call in Prog will appear on the screen.
 - If the Radio Check is received, Acknowledge will appear.
 - If it is not received, No Acknowledge will appear on screen.
- Keep pressing Exit to exit the menu.

Setting the Power Level:

Each channel has a predefined transmit power level that can be changed. High Power enables radios that are farther away to be reached. Low Power conserves the battery's charge. Auto Power automatically sets the optimal power level based on the strength of the signal received.

- Enter Menu Mode by pressing the Menu/Select button.
- Scroll with the up or down arrows until Utilities is found.
- Select Utilities with the Menu/Select button.
- Using the arrow keys, scroll until Power Level is reached.
- Select. The display shows the current power level.
- Use the arrows to find the correct power setting.
- Select the appropriate setting.
- After selection, program automatically exits.

Note: A message received from a nearby radio might change your radio's power level to low. This might cause radios that are farther away not to receive your transmissions.

Additional Operation Information:

- Some radio settings can be customized under the 'Utilities' found under the Menu options.
- The user is capable of monitoring multiple channels and receiving any calls that are transmitted on them. The radio will automatically switch to a scan list when it detects activity on it.
- The squelch function can be used to filter out nuisance calls and/or background noise.
- Several buttons are programmable as shortcut buttons.
- Radio can be used in conjunction with the Envoy Radiocom accessory. (See "Using the Envoy Radiocom Accessory.")

Routine Maintenance:

- Charge the battery after each use.
- Remove any gross contamination from the outer casing of the radio.

Battery Information:

Utilizes a rechargeable 7.5V battery. Several types of 7.5 V batteries are available: NiMh high capacity,

NiMh ultra-high capacity, Nicad, or Lilon. The life span of the battery is dependent on battery type and the radio power level (high or low) used. Battery for low power usage ranges from 11 to 14 hours depending on battery type. Life span for high power usage ranges from 8 to 11 hours. The NiMh ultra-high capacity battery on average has the best life span for both high and low power. Battery gauge on display screen indicates battery life levels.

To charge the battery, place the battery with or without the radio in the charger. The LED indicates the charging progress based on the color of the LED (p.17 of the instruction manual provides a table of what the different color lights mean).

NOTE: It is recommended that due to the many types of rechargeable battery configurations, that Equipment Managers verify proper battery charging and operation through monthly equipment operation until battery is discharged prior to recharging.

Note: The radio should be turned off before charging the battery. Always charge a new battery 14 to 16 hours before initial use. A standard battery may require one hour to charge to 90%.

Removing the Battery:

- Turn the radio off.
- Slide both battery latches downward.
- Pull the top part of the battery away from the radio.

Attaching the Battery:

- Fit the extensions at the bottom of the battery into the bottom slots on the radio.
- Press the top part of the battery toward the radio until you hear a click.

Accessories (Partial):

Part Description	Part Number
Ultra-Light Headset	ENMN4012
Medium Duty Headset	ENMN4016
Tactical Headband Style Headset	RMN4052
Ultra-Light Earpiece with Boom Microphone	AARMN4017
Temple Transducer	RMN4048
Remote Speaker Microphone	AAHMN9052
Noise Canceling Remote Speaker Microphone	AAHMN9053
Hard leather Keypad Case	HLN9694
Rapid Multi-Unit Charger	AAHN3003

Contact Information (Technical Support):

<http://www.motorola.com>

customercare.services@motorola.com

Technical Support: 888.567.7347