

- ⊙ Air Sampling Location
- ▬ Fence Line
- ▬ Drainage Ditch
- Unpaved Residential Access Road
- ➔ Slope Direction
- Excavation Zone
- Backfill Soil Applied

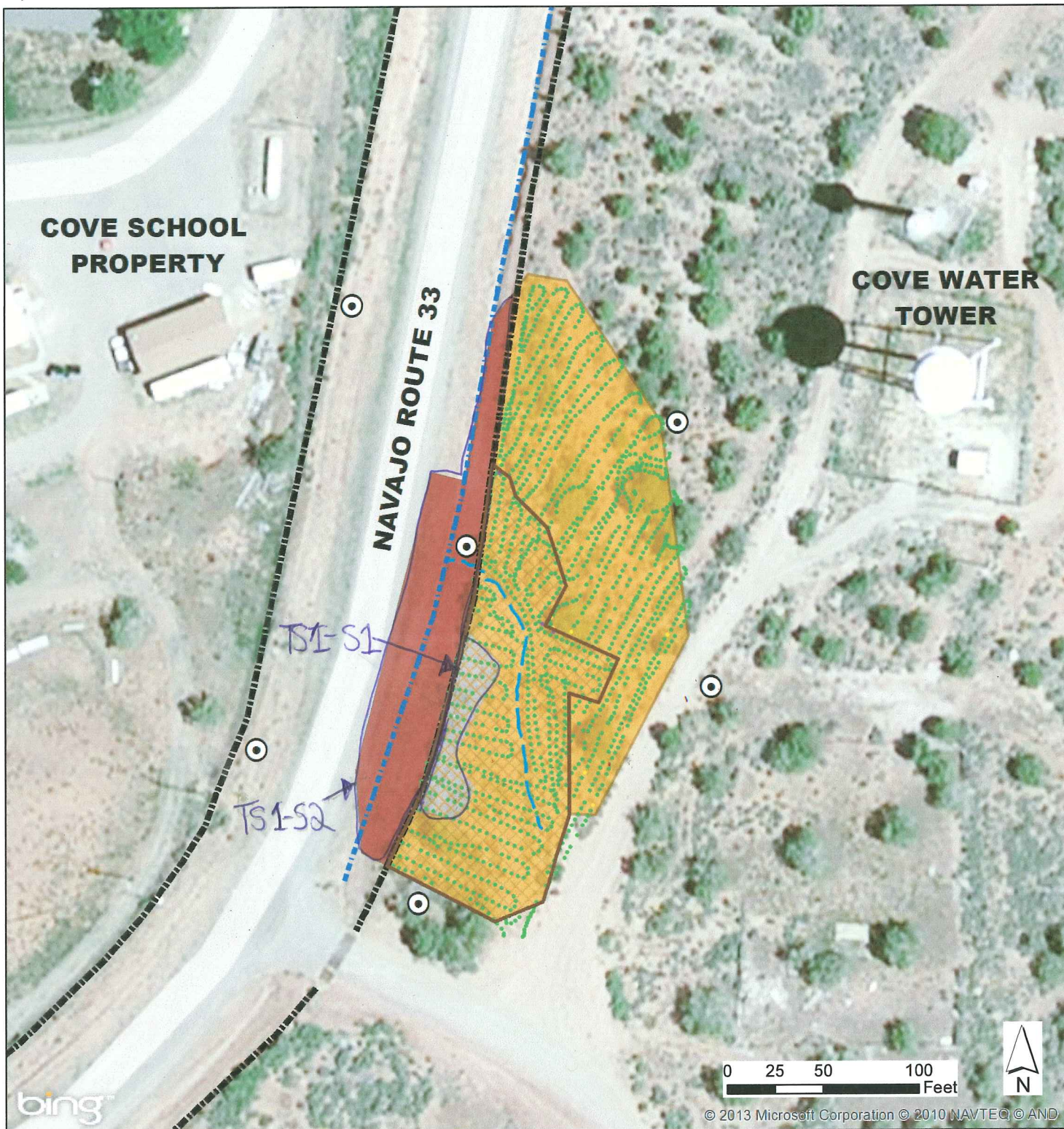
Gamma Activity (Counts Per Minute)	Correlated Radium-226 Concentration (picocuries per gram)
0 to 34,712	0 to 2
34,713 to 40,477	2.1 to 5
40,478 to 59,695	5.1 to 15
> 59,696	> 15

**Transfer Station 1
North Excavation Zone**

**Post Remediation
Surface Gamma Activity**

Cove, Apache County, Arizona





© 2013 Microsoft Corporation © 2010 NAVTEQ © AND

- Air Sampling Location
- Excavation Zone
- Backfill Soil Applied
- Historic Waste Rock Pit
- No Excavation
- Fence Line
- Drainage Ditch
- Erosional Trench

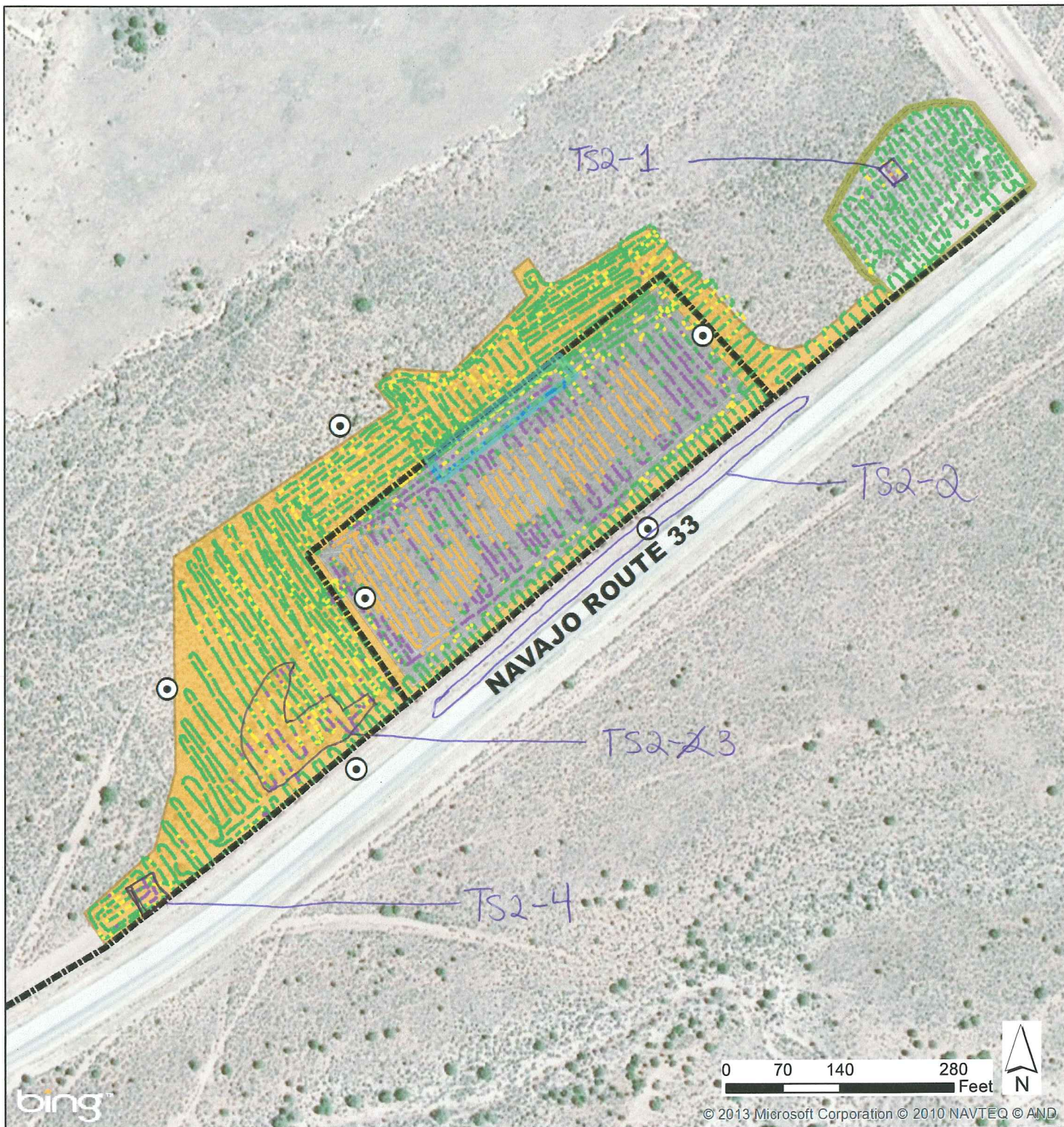
Gamma Activity (Counts Per Minute)	Correlated Radium-226 Concentration (picocuries per gram)
0 to 34,712	0 to 2
34,713 to 40,477	2.1 to 5
40,478 to 59,695	5.1 to 15
> 59,696	> 15

Transfer Station 1 South Excavation Zone

Post Remediation Surface Gamma Activity

Cove, Apache County, Arizona





- ⊙ Air Sampling Location
- Excavation Zone
- Chipping Area
- Constructed Stockpile
- Fence Line
- Buried Vegetation Zone

Gamma Activity (Counts Per Minute)	Correlated Radium-226 Concentration (picocuries per gram)
0 to 34,712	0 to 2
34,713 to 40,477	2.1 to 5
40,478 to 59,695	5.1 to 15
> 59,696	> 15

Transfer Station 2
Post Remediation
Surface Gamma Activity
Cove, Apache County, Arizona