



County of Sonoma Department of Health Services

Environmental Health

625 5th Street ❖ Santa Rosa, CA 95404

707-565-6565 ❖ Fax 707-565-6525

www.sonoma-county.org/eh



We know that the loss of your home is life changing and that a critical step in rebuilding is clearing the burned debris on your property. The County, the City of Santa Rosa, the State of California's Office of Emergency Services, and other State and federal partners will be coordinating a subsidized cleanup effort of private properties that ensures economical, safe, and legal disposal. Although participation is voluntary, for private contractors an equivalent process is required.

BENEFITS of the Public Cleanup Program:

TIMELY and AFFORDABLE debris removal. OTHER THAN YOUR EXISTING DEBRIS REMOVAL INSURANCE COVERAGE THERE WILL NOT BE A PROGRAM COST TO YOU.

EXPEDITED inspections.

PROPER HANDLING of debris.

ALL INCLUSIVE: coordinates the entire debris removal process, including permitting, debris inspections, asbestos inspection and removal, debris containers, vehicle removal, and clearance for occupancy.

The attached **flowchart** summarizes the process.

All impacted properties will be inspected for hazardous waste. Ash and debris from burned buildings and homes can contain toxic substances due to the presence of synthetic and hazardous materials, and it must be disposed of properly. **Regardless of whether you want to participate, do not transport ash or debris to landfills and transfer stations in Sonoma County at this time.** Debris and ash from burned structures should remain undisturbed until further instructions are issued.

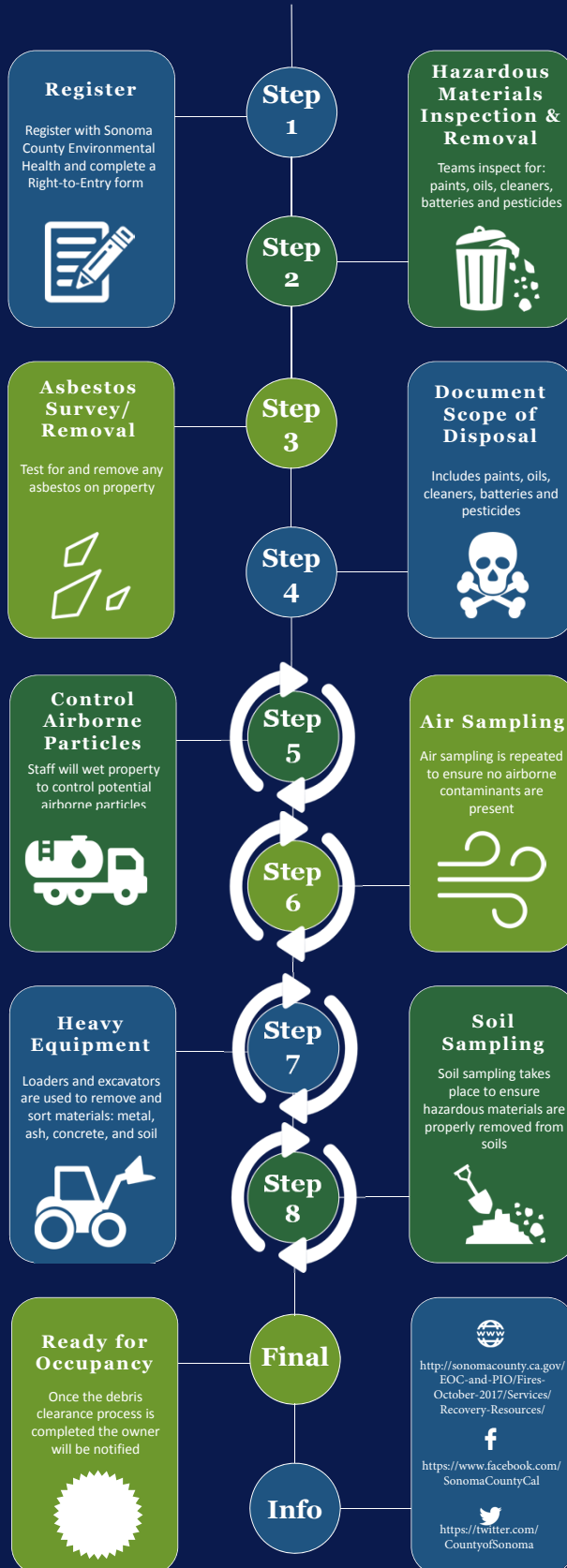
As you contemplate the cleanup process:

- BE SAFE. Fire debris can be very unsafe, as it can contain hazardous wastes, heavy metals, asbestos, and other contaminants. Wear appropriate protective clothing and boots and use goggles, masks, and gloves.
- PLEASE WAIT until notified of the official fire debris disposal procedures. If you do not take advantage of the public program, there will be additional guidance on permit requirements.
- DECIDE IF YOU WANT TO PARTICIPATE in the Public Cleanup Program.

If you choose to participate in the public cleanup, the first step is to fill out a **Right of Entry form** and return it to the **Sonoma County Department of Health – Environmental Health, 625 5th Street, Santa Rosa CA, 95404. Staff will be able to assist you after October 25.** Our office is open from 9:00 a.m. to 6:00 p.m. You will need your Assessor's Parcel Number, affected property address, insurance company name, policy, and policy number. You will also need to provide your telephone, e-mail, and address. Email questions to EHROE@sonoma-county.org or call (707) 565-6700.

Sonoma Fire Debris Clearance

Clearing debris from properties includes many steps and a large team of workers performing a variety of tasks. Here is an overview:



Graphics source: www.fat.con.com