



NATIONAL PROTECTION AND PROGRAMS DIRECTORATE

OFFICE OF CYBER AND INFRASTRUCTURE ANALYSIS

Analysis – Bakken Crude Oil Flows by Rail

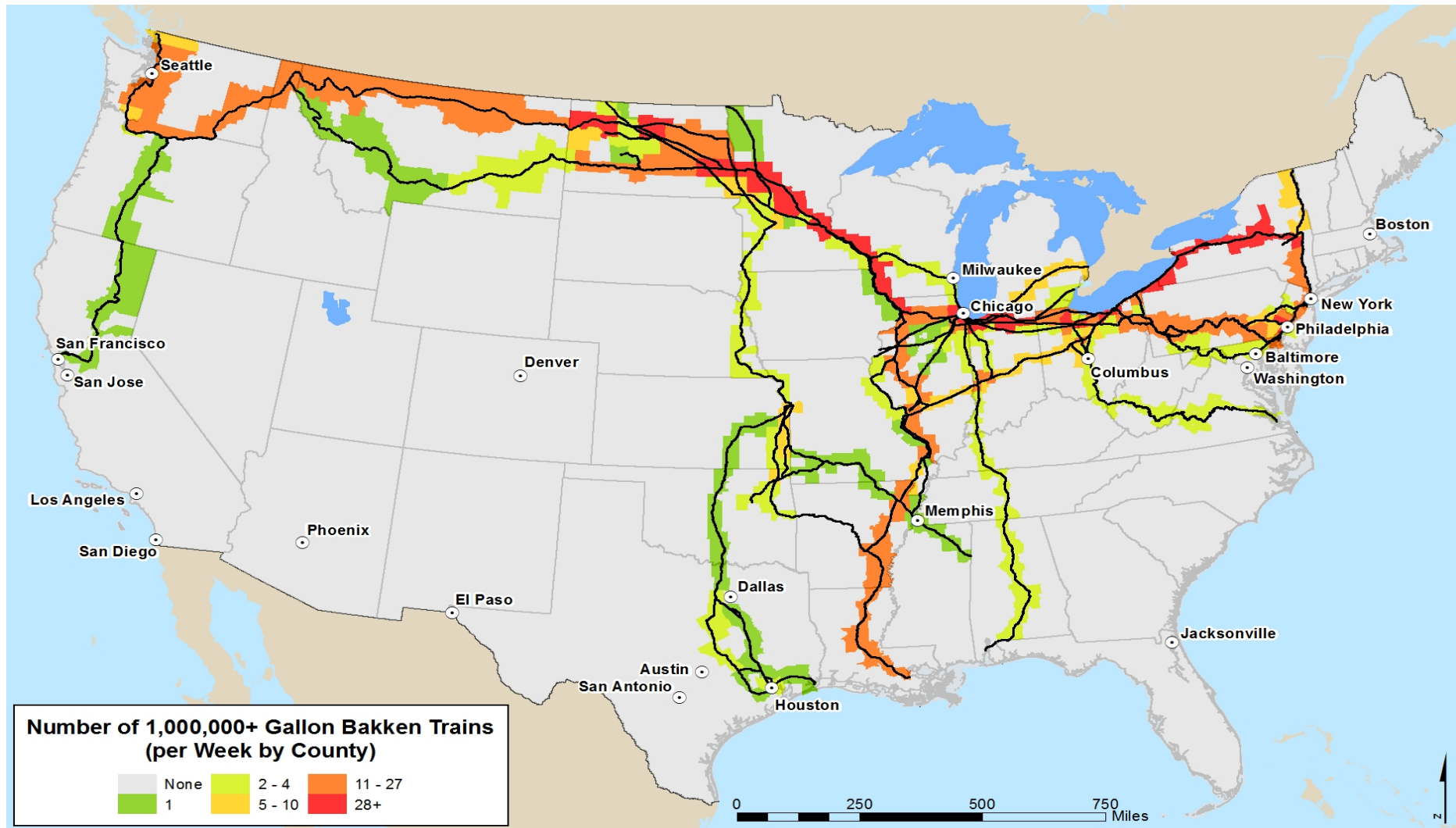
July 29, 2014



Homeland
Security

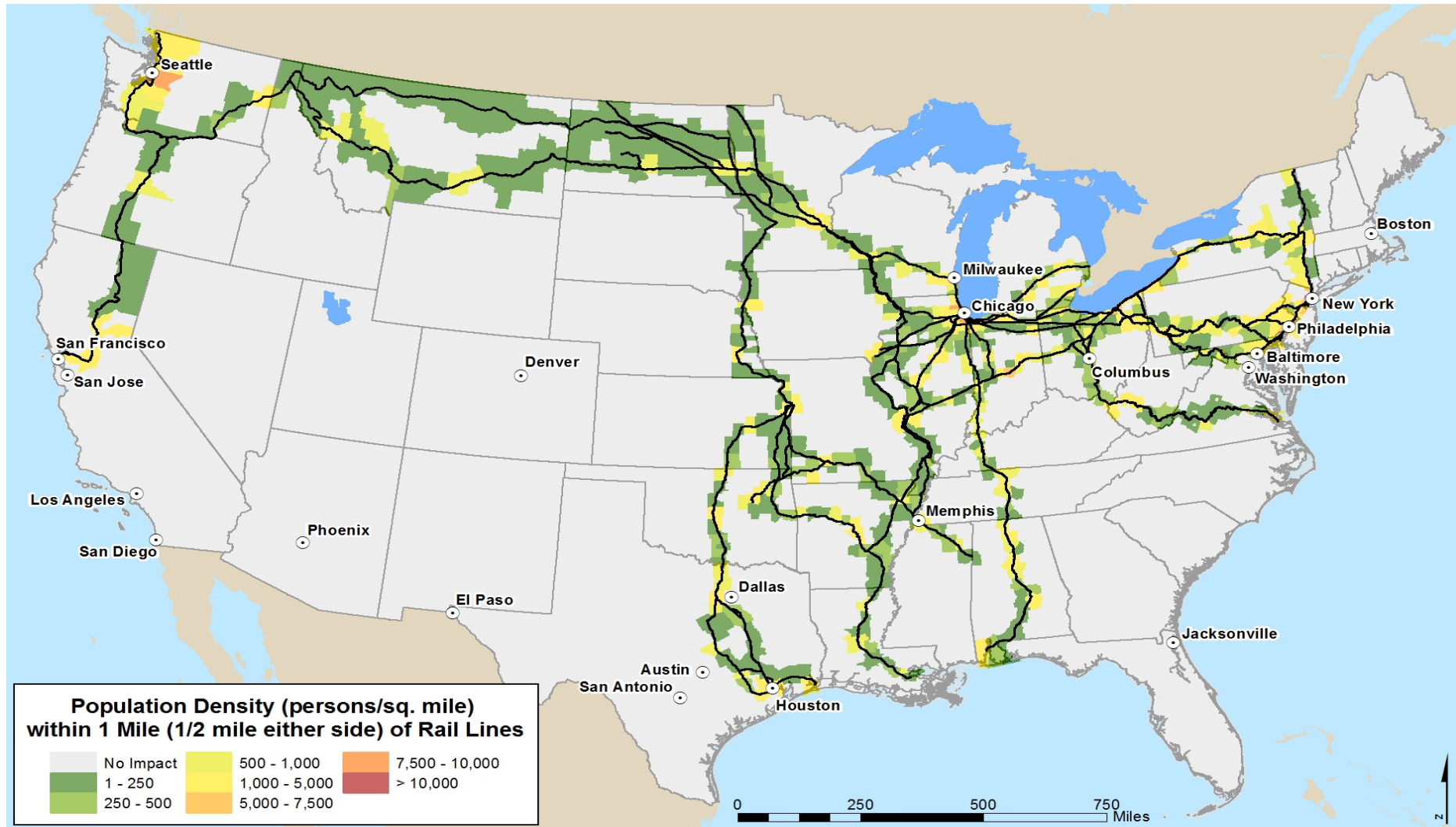
DOT Emergency Order Data

Trains Moving 1M+ Gallons of Bakken per Week



Populations Potentially Impacted

Population Density within ½ Mile of Bakken Rail Line



**Homeland
Security**

FOR OFFICIAL USE ONLY

Possible Areas of Focus

Population Centers With High Volume Bakken Lines



**Homeland
Security**

FOR OFFICIAL USE ONLY

Possible Areas of Focus

Population Centers With High Volume Bakken Lines

New Castle, DE

Cook, IL

DuPage, IL

Kane, IL

St. Clair, IL

Elkhart, IN

Lake, IN

St. Joseph, IN

Anoka, MN

Hennepin, MN

Ramsey, MN

Bergen, NJ

Essex, NJ

Hudson, NJ

Mercer, NJ

Middlesex, NJ

Somerset, NJ

Union, NJ

Albany, NY

Erie, NY

Monroe, NY

Oneida, NY

Onondaga, NY

Orange, NY

Rockland, NY

Schenectady, NY

Cuyahoga, OH

Lake, OH

Lorain, OH

Lucas, OH

Mahoning, OH

Stark, OH

Summit, OH

Allegheny, PA

Beaver, PA

Blair, PA

Bucks, PA

Dauphin, PA

Delaware, PA

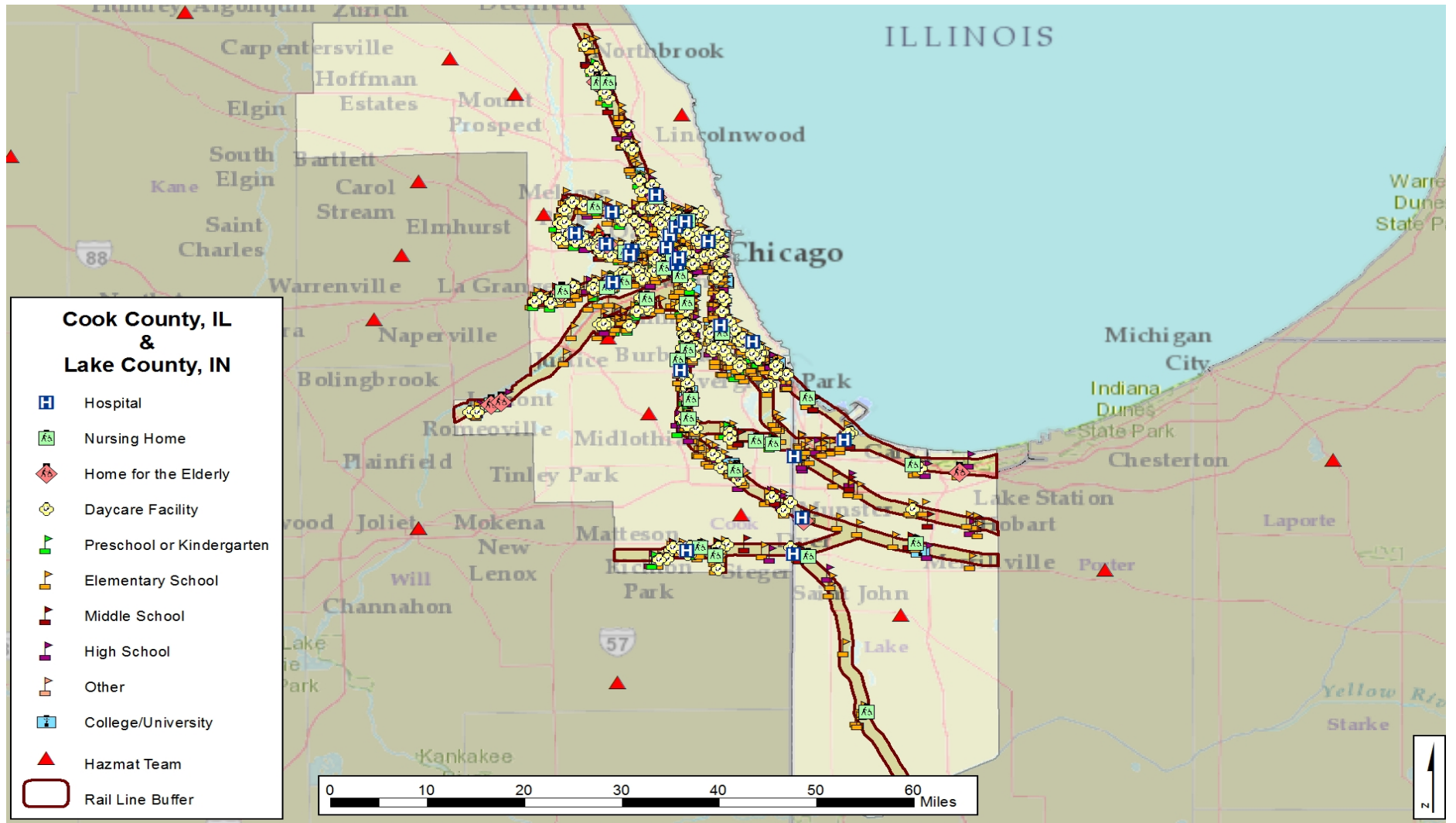
Erie, PA

Montgomery, PA

Philadelphia, PA

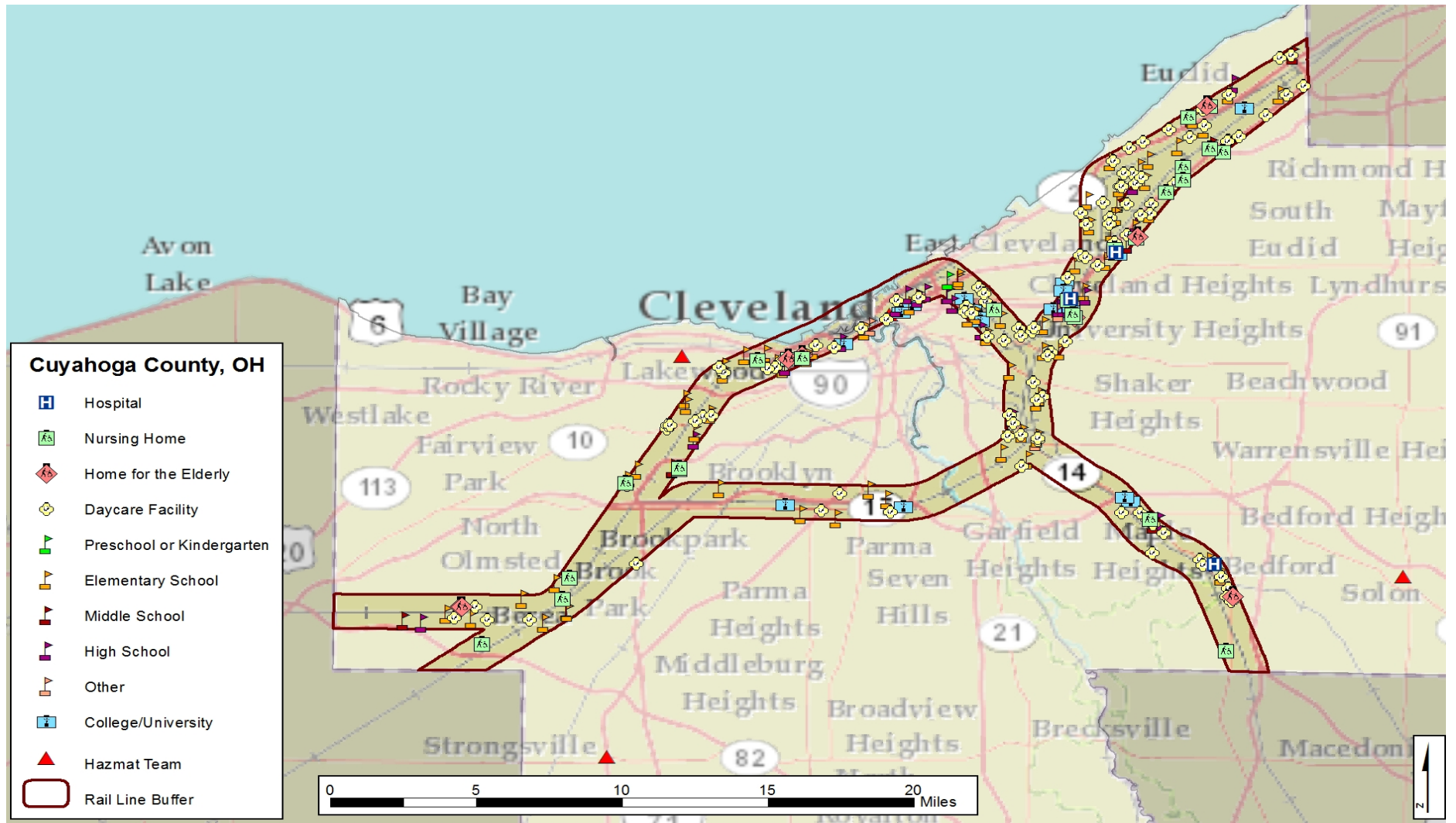
Cook (IL) & Lake (IN) Counties

Sensitive Infrastructure and Bakken Rail Lines



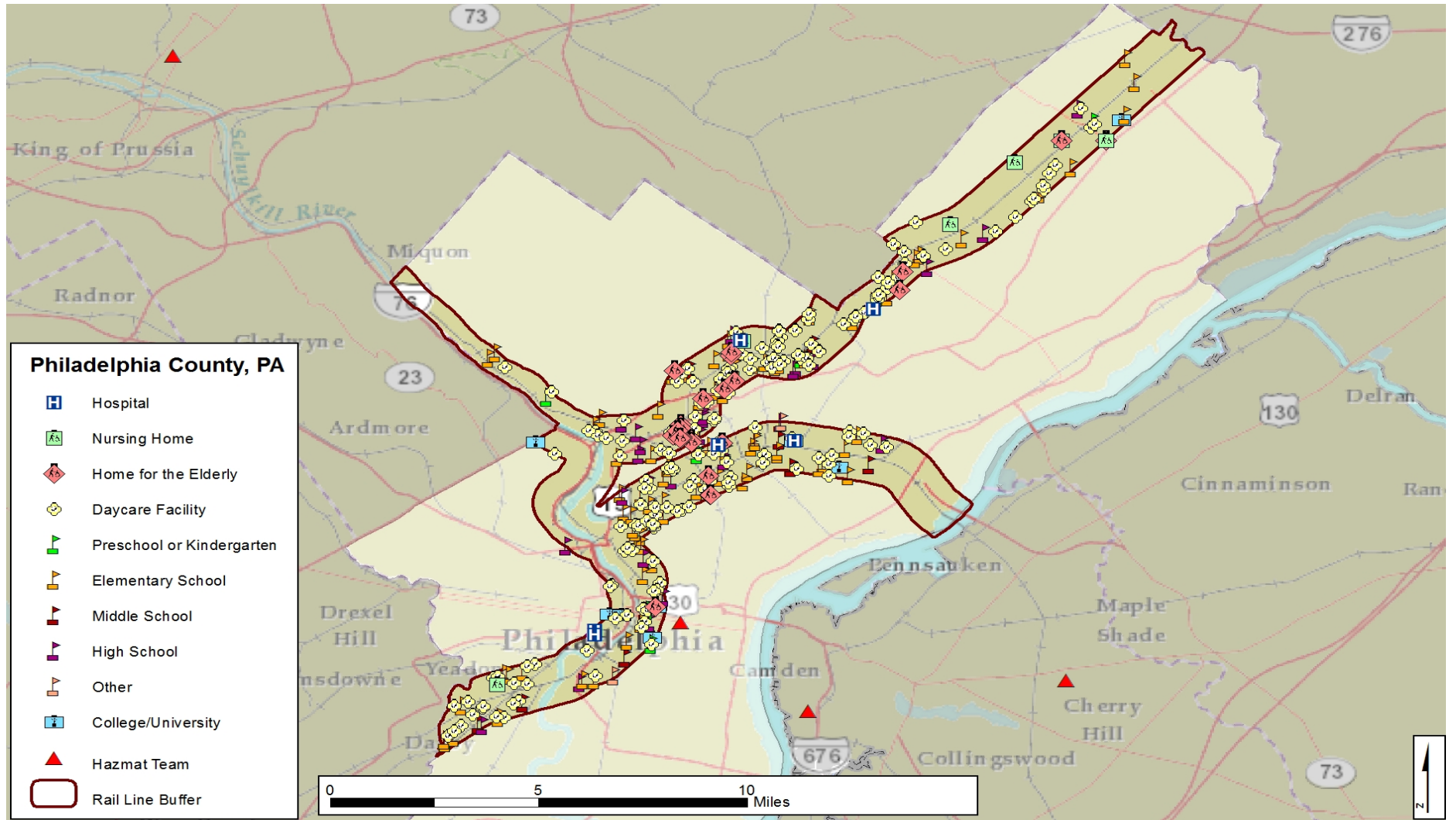
Cuyahoga County

Sensitive Infrastructure and Bakken Rail Lines

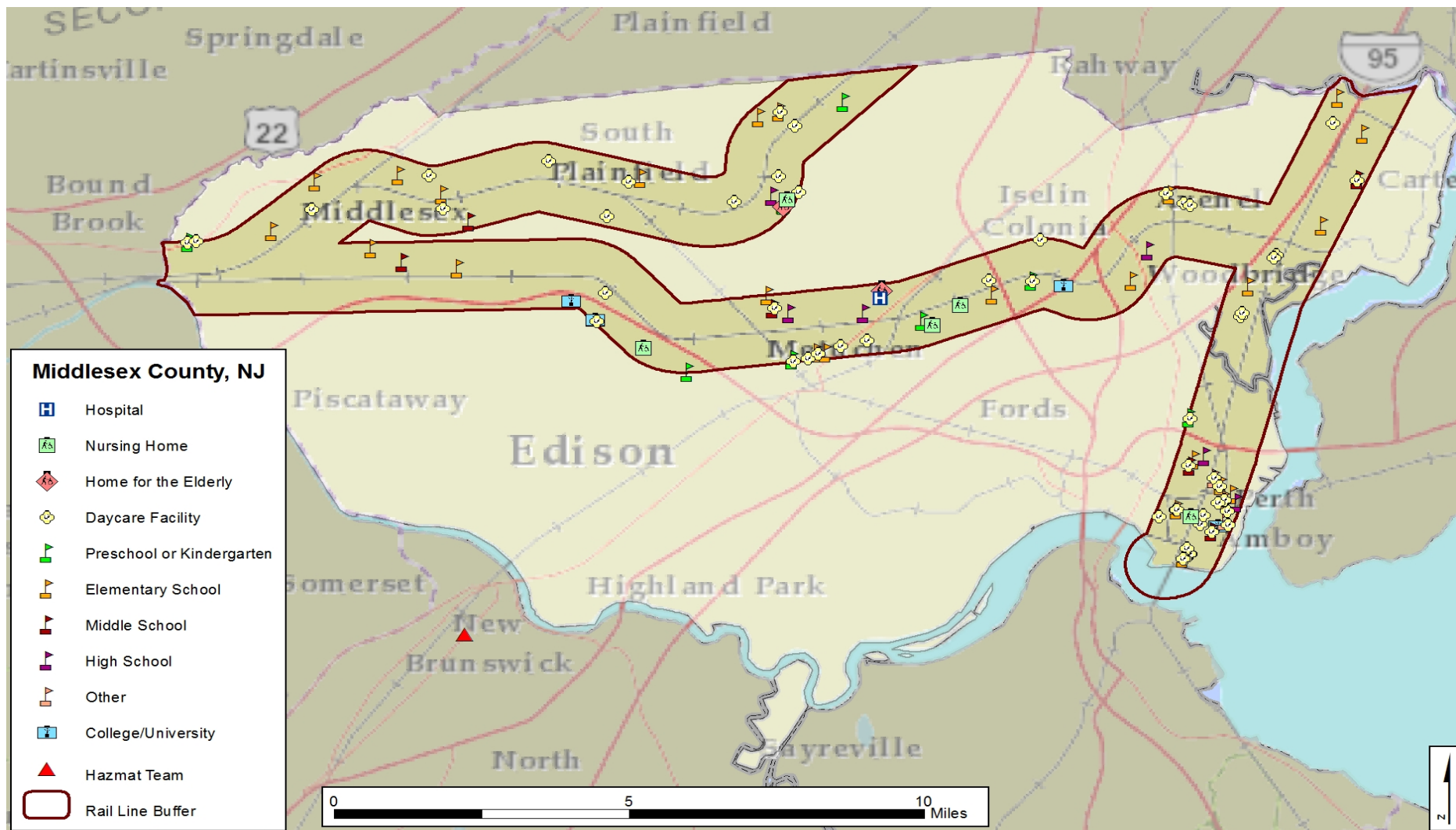


Philadelphia County

Sensitive Infrastructure and Bakken Rail Lines



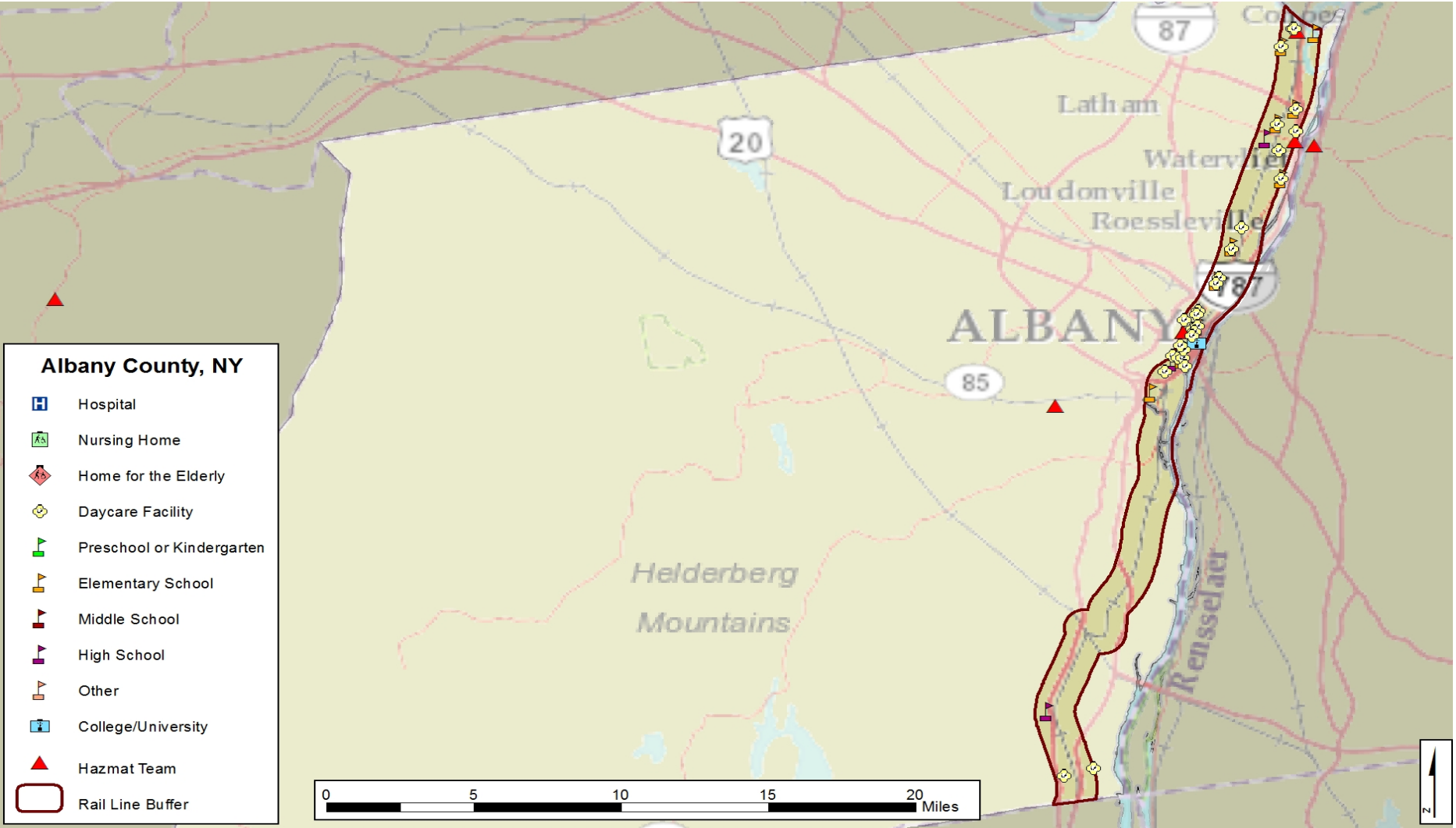
Sensitive Infrastructure and Bakken Rail Lines



FOR OFFICIAL USE ONLY

Albany County

Sensitive Infrastructure and Bakken Rail Lines



Homeland
Security

FOR OFFICIAL USE ONLY

Waterway Analysis

Navigable Waterways within 1/2 Mile of Bakken Rail Line



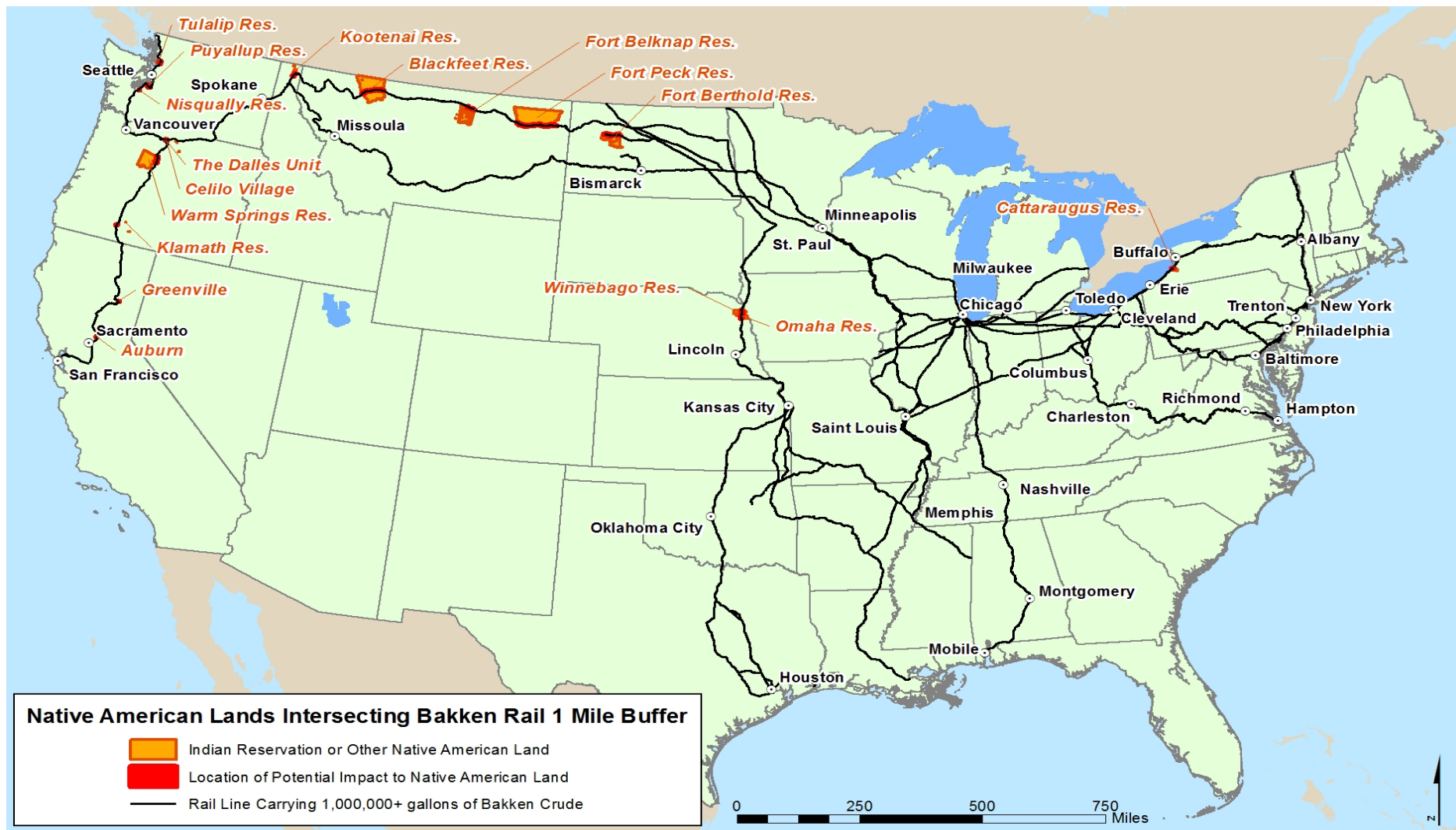
Protected Areas Analysis

USGS Protected Areas within 1/2 Mile of Bakken Rail Line



Tribal Analysis

Native American Lands within 1/2 Mile of Bakken Rail Line





Homeland Security

OCIA@hq.dhs.gov

www.dhs.gov/office-cyber-infrastructure-analysis