

JM SORCE, INC. UNITED STATIONER'S SUPPLY

OIL CONTAMINATION PLUME MAP
EDISON, NJ

FIGURE 12



JM Sorge, Inc.

BORING LOG B-1

Page 1 of 1

PROJECT: UNITED STATIONERS

LOCATION: 77 Executive Ave. Edison, NJ

DATE DRILLED/COMPLETED: 04/22/92-SAME

SURFACE ELEVATION: 71.11 Feet MSLD

DRILLING METHOD: 4" OD Solid Stem Auger

TOTAL DEPTH: 38 Feet

DRILLING COMPANY: JM Sorge, Inc.

DRILLER: K.Rock

GEOLOGIST: C.Finley

DEPTH feet	SAMPLE NUMBER	BLOWS/FT.	PID (ppm)		GRAPHIC LOG	WATER LEVEL	GEOLOGIC DESCRIPTION	REMARKS
			VALUES	PROFILE				
5							Brown/yellow sandy top soil. Silty sand with cobbles. Moist. D.brown silty sand, medium to coarse, with minor clay. Damp.	
10							Yellow sand, coarse. Moist. D.brown clay with silty sand. Silty sand with clay. Yellow silty sand, coarse. Dry to moist.	
15								
20								
25								
30							Blue/gray sand, coarse. Petroleum product saturated.	
35								
40							End of boring at 38 feet.	



JM Sorge, Inc.

BORING LOG B-2

Page 1 of 1

PROJECT: UNITED STATIONERS

LOCATION: 77 Executive Ave. Edison, NJ

DATE DRILLED/COMPLETED: 04/22/92-SAME

SURFACE ELEVATION: 74.01 Feet MSLD

DRILLING METHOD: 4" OD Solid Stem Auger

TOTAL DEPTH: 38 Feet

DRILLING COMPANY: JM Sorge, Inc.

DRILLER: K.Rock

GEOLOGIST: C.Finley

DEPTH feet	SAMPLE NUMBER	BLOWS/FT.	PID (ppm)		GRAPHIC LOG	WATER LEVEL	GEOLOGIC DESCRIPTION	REMARKS
			VALUES	PROFILE				
5							Brown/yellow sandy top soil. Yellow/brown silty sand, fine to coarse.	
10								
15								
20							L. yellow silty sand, coarse.	
25								
30	B-2a						Brown/yellow silty sand, coarse. Moist. Oily odor.	
							Clay, dense.	
	B-2b						D. red clay with minor silt and fine sand.	
35							D. red clay, very dense with gray layering.	
40							End of boring at 38 feet.	



JM Sorge, Inc.

BORING LOG B-3

Page 1 of 1

PROJECT: UNITED STATIONERS

LOCATION: 77 Executive Ave. Edison, NJ

DATE DRILLED/COMPLETED: 04/22/92-SAME

SURFACE ELEVATION: 50.28 Feet MSLD

DRILLING METHOD: 4" OD Solid Stem Auger

TOTAL DEPTH: 28.5 Feet

DRILLING COMPANY: JM Sorge, Inc.

DRILLER: K.Rock

GEOLOGIST: C.Finley

DEPTH feet	SAMPLE NUMBER	BLOWS/FT.	PID (ppm)		GRAPHIC LOG	WATER LEVEL	GEOLOGIC DESCRIPTION	REMARKS
			VALUES	PROFILE				
5							Brown/yellow sandy top soil. Brown silty sand.	
10							Yellow/Lbrown silty sand, fine to coarse with clay.	
15								
20								
25								
30							Red/brown clay, dense. End of boring at 28.5 feet.	
35								
40								



JM Sorge, Inc.

BORING LOG B-4

Page 1 of 1

PROJECT: UNITED STATIONERS	LOCATION: 77 Executive Ave. Edison, NJ
DATE DRILLED/COMPLETED: 04/22/92-SAME	SURFACE ELEVATION: Feet MSLD
DRILLING METHOD: 4" OD Solid Stem Auger	TOTAL DEPTH: 32 Feet
DRILLING COMPANY: JM Sorge, Inc.	DRILLER: K.Rock
	GEOLOGIST: C.Finley

DEPTH feet	SAMPLE NUMBER	BLOWS/FT.	PID (ppm)		GRAPHIC LOG	WATER LEVEL	GEOLOGIC DESCRIPTION	REMARKS
			VALUES	PROFILE				
5							Brown/yellow sandy top soil. Brown silty sand with minor clay.	
10							Brown silty sand, fine to coarse.	
15							Gray/green silty sand, fine to coarse.	
20								
25								
30							Red/gray clay, dense.	
35							End of boring at 32 feet.	
40								



JM Sorge, Inc.

BORING LOG B-5

Page 1 of 1

PROJECT: UNITED STATIONERS

LOCATION: 77 Executive Ave. Edison, NJ

DATE DRILLED/COMPLETED: 04/22/92-SAME

SURFACE ELEVATION: Feet MSLD

DRILLING METHOD: 4" OD Solid Stem Auger

TOTAL DEPTH: 8.5 Feet

DRILLING COMPANY: JM Sorge, Inc.

DRILLER: K.Rock

GEOLOGIST: C.Finley

DEPTH feet	SAMPLE NUMBER	BLOWS/FT.	PID (ppm)		GRAPHIC LOG	WATER LEVEL	GEOLOGIC DESCRIPTION	REMARKS
			VALUES	PROFILE				
5	B-5						Brown/yellow sandy top soil.	
							L.brown/yellow silty sand, fine to coarse.	
							Water with slight petroleum odor.	
10							Gray/yellow silty sand, fine to coarse.	
15							End of boring at 14 feet.	



JM Sorge, Inc.

BORING LOG B-6

Page 1 of 1

PROJECT: UNITED STATIONERS

LOCATION: 77 Executive Ave. Edison, NJ

DATE DRILLED/COMPLETED: 04/22/92-SAME

SURFACE ELEVATION: Feet MSLD

DRILLING METHOD: 4" OD Solid Stem Auger

TOTAL DEPTH: 12 Feet

DRILLING COMPANY: JM Sorge, Inc.

DRILLER: K.Rock

GEOLOGIST: C.Finley

DEPTH feet	SAMPLE NUMBER	BLOWS/FT.	PID (ppm)		GRAPHIC LOG	WATER LEVEL	GEOLOGIC DESCRIPTION	REMARKS
			VALUES	PROFILE				
							Brown/yellow sandy top soil.	
							L.brown sandy silt, fine to coarse.	
							L.brown/gray silty sand, fine to coarse. Soil soaked with petroleum product.	
5	8							
							L.yellow silty sand, fine to coarse. Wet.	
10								
							End of boring at 12 feet.	
15								

PROJECT: UNITED STATIONERS

LOCATION: 77 Executive Ave. Edison, NJ

DATE DRILLED/COMPLETED: 04/22/92-SAME

SURFACE ELEVATION: *Feet MSLD*

DRILLING METHOD: 4" OD Solid Stem Auger

TOTAL DEPTH: 12 Feet

DRILLING COMPANY: *JM Sorge, Inc.*

DRILLER: K.Rock

GEOLOGIST: *C.Finley*

DEPTH feet	SAMPLE NUMBER	BLOWS/FT.	PID (ppm)		GRAPHIC LOG	WATER LEVEL	GEOLOGIC DESCRIPTION	REMARKS
			VALUES	PROFILE				
							Brown/yellow sandy top soil.	
							White silty sand.	
							Red clay.	
							Brown/gray silty sand, fine to coarse. Sediment saturated with petroleum product.	
5								
	b-7							
10								
							End of boring at 12 feet.	
15								



JM Sorge, Inc.

BORING LOG B-8

Page 1 of 1

PROJECT: **UNITED STATIONERS**

LOCATION: **77 Executive Ave. Edison, NJ**

DATE DRILLED/COMPLETED: **04/22/82-SAME**

SURFACE ELEVATION: **Feet MSLD**

DRILLING METHOD: **4" OD Solid Stem Auger**

TOTAL DEPTH: **8 Feet**

DRILLING COMPANY: **JM Sorge, Inc.**

DRILLER: **K.Rock**

GEOLOGIST: **C.Finley**

DEPTH feet	SAMPLE NUMBER	BLOWS/FT.	PID (ppm)		GRAPHIC LOG	WATER LEVEL	GEOLOGIC DESCRIPTION	REMARKS
			VALUES	PROFILE				
							Brown/yellow sandy top soil.	
							Silty sand, fine to coarse, with minor clay.	
							Sediment saturated with petroleum product. Black discoloration.	
5	B-8						Brown/yellow silty sand, fine to coarse. Wet.	
10							End of boring at 8 feet.	
15								



JM Sorge, Inc.

BORING LOG B-9

Page 1 of 1

PROJECT: **UNITED STATIONERS**

LOCATION: **77 Executive Ave. Edison, NJ**

DATE DRILLED/COMPLETED: **04/22/92-SAME**

SURFACE ELEVATION: **Feet MSLD**

DRILLING METHOD: **4" OD Solid Stem Auger**

TOTAL DEPTH: **9.5 Feet**

DRILLING COMPANY: **JM Sorge, Inc.**

DRILLER: **K.Rock**

GEOLOGIST: **C.Finley**

DEPTH feet	SAMPLE NUMBER	BLOWS/FT.	PID (ppm)		GRAPHIC LOG	WATER LEVEL	GEOLOGIC DESCRIPTION	REMARKS
			VALUES	PROFILE				
5	1						<p>Brown silty sand, fine to coarse.</p> <p>Black discoloration of sediment caused by saturation with petroleum product.</p> <p>Change of color to brown.</p> <p>Change of color to light brown.</p> <p>End of boring at 9.5 feet.</p>	



JM Sorge, Inc.

BORING LOG B-10

Page 1 of 1

PROJECT: UNITED STATIONERS

LOCATION: 77 Executive Ave. Edlson, NJ

DATE DRILLED/COMPLETED: 04/23/92-SAME

SURFACE ELEVATION: Feet MSLD

DRILLING METHOD: 4" OD Solid Stem Auger

TOTAL DEPTH: 17 Feet

DRILLING COMPANY: JM Sorge, Inc.

DRILLER: K.Rock

GEOLOGIST: C.Finley

DEPTH feet	SAMPLE NUMBER	BLOWS/FT.	PID (ppm)		GRAPHIC LOG	WATER LEVEL	GEOLOGIC DESCRIPTION	REMARKS
			VALUES	PROFILE				
							Brown/yellow sandy top soil.	
							Black organic loam. Marshy odor.	
							Gray/green silty sand, fine to coarse. Light petroleum odor.	
5	5-10						Change of color to brown/gray. No odor, wet.	
							Change of color to gray. No odor.	
10								
							Red clay with gravel.	
15								
							End of boring at 17 feet.	
20								



JM Sorge, Inc.

BORING LOG B-11

Page 1 of 1

PROJECT: **UNITED STATIONERS**

LOCATION: **77 Executive Ave. Edison, NJ**

DATE DRILLED/COMPLETED: **04/23/82-SAME**

SURFACE ELEVATION: **Feet MSLD**

DRILLING METHOD: **4" OD Solid Stem Auger**

TOTAL DEPTH: **38 Feet**

DRILLING COMPANY: **JM Sorge, Inc.**

DRILLER: **K.Rock**

GEOLOGIST: **C.Finley**

DEPTH feet	SAMPLE NUMBER	BLOWS/FT.	PID (ppm)		GRAPHIC LOG	WATER LEVEL	GEOLOGIC DESCRIPTION	REMARKS
			VALUES	PROFILE				
0							Brown/yellow sandy top soil.	
							D.brown/red silty, sandy loam.	
5							L.brown silty sand, fine to coarse with clay.	
							Brown silty sand, fine to coarse. Dry.	
							L.brown silty sand, fine to coarse with clay.	
10							Brown/yellow silty sand, fine to coarse.	
15							Change of color to yellow.	
							Change of color to brown/yellow.	
20								
25								
30							Dense clay.	
35								
40							End of boring at 38 feet.	



JM Sorge, Inc.

BORING LOG B-12

Page 1 of 1

PROJECT: UNITED STATIONERS

LOCATION: 77 Executive Ave. Edison, NJ

DATE DRILLED/COMPLETED: 04/23/92-SAME

SURFACE ELEVATION: Feet MSLD

DRILLING METHOD: 4" OD Solid Stem Auger

TOTAL DEPTH: 30 Feet

DRILLING COMPANY: JM Sorge, Inc.

DRILLER: K.Rock

GEOLOGIST: C.Finley

DEPTH feet	SAMPLE NUMBER	BLOWS/FT.	PID (ppm)		GRAPHIC LOG	WATER LEVEL	GEOLOGIC DESCRIPTION	REMARKS
			VALUES	PROFILE				
0							Brown/yellow sandy top soil.	
							Reddish silty and sandy loam.	
							Black silty and sandy loam with gravel.	
5							Brown silty sandy loam.	
10								
12	D-2						Black loam with petroleum odor.	
15							Brown silty sand with minor clay.	
20							Moist to wet saturated with oil.	
25							Gray clay with silty sand.	
30							End of boring at 30 feet.	
35								
40								



JM Sorge, Inc.

BORING LOG B-13

Page 1 of 1

PROJECT: UNITED STATIONERS

LOCATION: 77 Executive Ave. Edison, NJ

DATE DRILLED/COMPLETED: 04/23/92-SAME

SURFACE ELEVATION: Feet MSLD

DRILLING METHOD: 4" OD Solid Stem Auger

TOTAL DEPTH: 14 Feet

DRILLING COMPANY: JM Sorge, Inc.

DRILLER: K.Rock

GEOLOGIST: C.Finley

DEPTH feet	SAMPLE NUMBER	BLOWS/FT.	PID (ppm)		GRAPHIC LOG	WATER LEVEL	GEOLOGIC DESCRIPTION	REMARKS
			VALUES	PROFILE				
							Brown/yellow sandy top soil.	
							Yellow silty sand. Moist.	
5	6-8						Yellow/brown silty sand, fine to coarse.	
10								
15							End of boring at 14 feet.	



JM Sorge, Inc.

BORING LOG B-14

Page 1 of 1

PROJECT: UNITED STATIONERS

LOCATION: 77 Executive Ave. Edison, NJ

DATE DRILLED/COMPLETED: 04/23/92-SAME

SURFACE ELEVATION: Feet MSLD

DRILLING METHOD: 4" OD Solid Stem Auger

TOTAL DEPTH: 9 Feet

DRILLING COMPANY: JM Sorge, Inc.

DRILLER: K.Rock

GEOLOGIST: C.Finley

DEPTH feet	SAMPLE NUMBER	BLOWS/FT.	PID (ppm)		GRAPHIC LOG	WATER LEVEL	GEOLOGIC DESCRIPTION	REMARKS
			VALUES	PROFILE				
							Brown/yellow sandy top soil.	
							Brown silty and sandy loam.	
5	B-14						Sediment saturated with oil.	
							At 6 ft. no product observed.	
10								
15							End of boring at 9 feet.	



JM Sorge, Inc.

BORING LOG B-15

Page 1 of 1

PROJECT: UNITED STATIONERS

LOCATION: 77 Executive Ave. Edison, NJ

DATE DRILLED/COMPLETED: 04/23/92-SAME

SURFACE ELEVATION: Feet MSLD

DRILLING METHOD: 4" OD Solid Stem Auger

TOTAL DEPTH: 9 Feet

DRILLING COMPANY: JM Sorge, Inc.

DRILLER: K.Rock

GEOLOGIST: C.Finley

DEPTH feet	SAMPLE NUMBER	BLOWS/FT.	PID (ppm)		GRAPHIC LOG	WATER LEVEL	GEOLOGIC DESCRIPTION	REMARKS
			VALUES	PROFILE				
							Black organic loam.	
							Silty sandy loam.	
5	B-15						Red dense clay with gray layering.	
10							End of boring at 9 feet.	
15								



JM Sorge, Inc.

BORING LOG B-16

Page 1 of 1

PROJECT: UNITED STATIONERS

LOCATION: 77 Executive Ave. Edison, NJ

DATE DRILLED/COMPLETED: 04/23/92-SAME

SURFACE ELEVATION: Feet MSLD

DRILLING METHOD: 4" OD Solid Stem Auger

TOTAL DEPTH: 9 Feet

DRILLING COMPANY: JM Sorge, Inc.

DRILLER: K.Rock

GEOLOGIST: C.Finley

DEPTH feet	SAMPLE NUMBER	BLOWS/FT.	PID (ppm)		GRAPHIC LOG	WATER LEVEL	GEOLOGIC DESCRIPTION	REMARKS
			VALUES	PROFILE				
							Reddish loam.	
							Red dense clay.	
							Brown/black silty sandy loam.	
5	1-2						Black organic silty sand, fine to coarse.	
							Black silty sand, fine to coarse.	
10							End of boring at 9 feet.	
15								



JM Sorge, Inc.

BORING LOG B-17

Page 1 of 1

PROJECT: UNITED STATIONERS

LOCATION: 77 Executive Ave. Edlson, NJ

DATE DRILLED/COMPLETED: 04/23/92-SAME

SURFACE ELEVATION: Feet MSLD

DRILLING METHOD: 4" OD Solid Stem Auger

TOTAL DEPTH: 18 Feet

DRILLING COMPANY: JM Sorge, Inc.

DRILLER: K.Rock

GEOLOGIST: C.Finley

DEPTH feet	SAMPLE NUMBER	BLOWS/FT.	PID (ppm)		GRAPHIC LOG	WATER LEVEL	GEOLOGIC DESCRIPTION	REMARKS
			VALUES	PROFILE				
							Brown sandy top soil.	
							Yellow silty sand, fine to coarse.	
							Yellow clay. Dry.	
5							Gray clay.	
	D-7						D.gray clay	
10								
							Brown/red weathered shale.	
15								
							End of boring at 18 feet.	
20								



JM Sorge, Inc.

BORING LOG B-18

Page 1 of 1

PROJECT: UNITED STATIONERS

LOCATION: 77 Executive Ave. Edison, NJ

DATE DRILLED/COMPLETED: 04/23/92-SAME

SURFACE ELEVATION: Feet MSLD

DRILLING METHOD: 4" OD Solid Stem Auger

TOTAL DEPTH: 13 Feet

DRILLING COMPANY: JM Sorge, Inc.

DRILLER: K.Rock

GEOLOGIST: C.Finley

DEPTH feet	SAMPLE NUMBER	BLOWS/FT.	PTD (ppm)		GRAPHIC LOG	WATER LEVEL	GEOLOGIC DESCRIPTION	REMARKS
			VALUES	PROFILE				
							Brown sandy top soil.	
							Yellow/brown silty sand with clay.	
5	78						Brown/black silty sand with clay. Discoloration caused by petroleum product.	
							Yellow silty sand, fine to coarse. Slight odor.	
10								
15							End of boring at 13 feet.	



JM Sorge, Inc.

BORING LOG B-19

Page 1 of 1

PROJECT: UNITED STATIONERS

LOCATION: 77 Executive Ave. Edison, NJ

DATE DRILLED/COMPLETED: 04/23/92-SAME

SURFACE ELEVATION: Feet MSLD

DRILLING METHOD: 4" OD Solid Stem Auger

TOTAL DEPTH: 8.5 Feet

DRILLING COMPANY: JM Sorge, Inc.

DRILLER: K.Rock

GEOLOGIST: C.Finley

DEPTH feet	SAMPLE NUMBER	BLOWS/FT.	PID (ppm)		GRAPHIC LOG	WATER LEVEL	GEOLOGIC DESCRIPTION	REMARKS
			VALUES	PROFILE				
							Brown silty sandy loam. Moist.	
	B-19						Red clay dry to damp.	
5								
10								
15							End of boring at 8.5 feet.	



JM Sorge, Inc.

BORING LOG B-20

Page 1 of 1

PROJECT: **UNITED STATIONERS**

LOCATION: **77 Executive Ave. Edison, NJ**

DATE DRILLED/COMPLETED: **04/24/92-SAME**

SURFACE ELEVATION: **Feet MSLD**

DRILLING METHOD: **4" OD Solid Stem Auger**

TOTAL DEPTH: **9 Feet**

DRILLING COMPANY: **JM Sorge, Inc.**

DRILLER: **K.Rock**

GEOLOGIST: **C.Finley**

DEPTH feet	SAMPLE NUMBER	BLOWS/FT.	PID (ppm)		GRAPHIC LOG	WATER LEVEL	GEOLOGIC DESCRIPTION	REMARKS
			VALUES	PROFILE				
							Red silty sandy loam.	
							Red silty and sandy clay.	
							Yellow/brown clay, dense.	
5							Change of color to gray, gray/blue. Clay becomes denser and dryer.	
	b-20							
10								
15							End of boring at 9 feet.	



JM Sorge, Inc.

BORING LOG B-21

Page 1 of 1

PROJECT: UNITED STATIONERS

LOCATION: 77 Executive Ave. Edison, NJ

DATE DRILLED/COMPLETED: 04/24/92-SAME

SURFACE ELEVATION: Feet MSLD

DRILLING METHOD: 4" OD Solid Stem Auger

TOTAL DEPTH: 20 Feet

DRILLING COMPANY: JM Sorge, Inc.

DRILLER: K.Rock

GEOLOGIST: C.Finley

DEPTH feet	SAMPLE NUMBER	BLOWS/FT.	PID (ppm)		GRAPHIC LOG	WATER LEVEL	GEOLOGIC DESCRIPTION	REMARKS
			VALUES	PROFILE				
5	b-21						Brown sandy top soil. Yellow silty sand, fine to coarse. Moist. Black discoloration. Change of color to brown/yellow.	
10								
15								
20							Red clay, dense. End of boring at 20 feet.	



JM Sorge, Inc.

BORING LOG B-22

Page 1 of 1

PROJECT: **UNITED STATIONERS**

LOCATION: **77 Executive Ave. Edison, NJ**

DATE DRILLED/COMPLETED: **04/24/92-SAME**

SURFACE ELEVATION: **Feet MSLD**

DRILLING METHOD: **4" OD Solid Stem Auger**

TOTAL DEPTH: **8 Feet**

DRILLING COMPANY: **JM Sorge, Inc.**

DRILLER: **K.Rock**

GEOLOGIST: **C.Finley**

DEPTH feet	SAMPLE NUMBER	BLOWS/FT.	PID (ppm)		GRAPHIC LOG	WATER LEVEL	GEOLOGIC DESCRIPTION	REMARKS
			VALUES	PROFILE				
							Brown sandy top soil.	
							Brown silty sandy loam.	
	B-22						Red clay, dense.	
5								
10								
15							End of boring at 8 feet.	



JM Sorge, Inc.

BORING LOG B-23

Page 1 of 1

PROJECT: **UNITED STATIONERS**

LOCATION: **77 Executive Ave. Edison, NJ**

DATE DRILLED/COMPLETED: **04/24/92-SAME**

SURFACE ELEVATION: **Feet MSLD**

DRILLING METHOD: **4" OD Solid Stem Auger**

TOTAL DEPTH: **13 Feet**

DRILLING COMPANY: **JM Sorge, Inc.**

DRILLER: **K.Rock**

GEOLOGIST: **C.Finley**

DEPTH feet	SAMPLE NUMBER	BLOWS/FT.	PID (ppm)		GRAPHIC LOG	WATER LEVEL	GEOLOGIC DESCRIPTION	REMARKS
			VALUES	PROFILE				
							Red/brown silty sand, fine to coarse. Dry.	
							Olive brown silty sand, fine to coarse.	
							Brown/olive silty sand, fine to coarse, with gravel.	
5								
	B-23						Brown silty sand, fine to coarse.	
							Yellow loose clay.	
							Red clay, loose to dense.	
10								
							End of boring at 13 feet.	
15								



JM Sorge, Inc.

BORING LOG B-24

Page 1 of 1

PROJECT: UNITED STATIONERS

LOCATION: 77 Executive Ave. Edison, NJ

DATE DRILLED/COMPLETED: 04/24/92-SAME

SURFACE ELEVATION: Feet MSLD

DRILLING METHOD: 4" OD Solid Stem Auger

TOTAL DEPTH: 18 Feet

DRILLING COMPANY: JM Sorge, Inc.

DRILLER: K.Rock

GEOLOGIST: C.Finley

DEPTH feet	SAMPLE NUMBER	BLOWS/FT.	PID (ppm)		GRAPHIC LOG	WATER LEVEL	GEOLOGIC DESCRIPTION	REMARKS
			VALUES	PROFILE				
							Brown sandy top soil.	
							Brown silty sandy loam.	
							Black silty sandy loam saturated with oil.	
5	b-24						Yellow silty sand, fine to coarse with clay.	
10								
15							Red/gray clay, dense.	
20							End of boring at 18 feet.	



JM Sorge, Inc.

BORING LOG B-25

Page 1 of 1

PROJECT: UNITED STATIONERS

LOCATION: 77 Executive Ave. Edlson, NJ

DATE DRILLED/COMPLETED: 04/24/92-SAME

SURFACE ELEVATION: Feet MSLD

DRILLING METHOD: 4" OD Solid Stem Auger

TOTAL DEPTH: 38 Feet

DRILLING COMPANY: JM Sorge, Inc.

DRILLER: K.Rock

GEOLOGIST: C.Finley

DEPTH feet	SAMPLE NUMBER	BLOWS/FT.	PID (ppm)		GRAPHIC LOG	WATER LEVEL	GEOLOGIC DESCRIPTION	REMARKS
			VALUES	PROFILE				
5							Brown/yellow silty sand.	
10								
15								
18.5	B-25a						Slight odor at 18.5 ft.	
20							Yellow silty sandy clay.	
20							Yellow clay with sand and silt.	
20							Red/gray clay with oil odor.	
25	B-25b						Red clay, dense.	
30								
35	B-25c							
40							End of boring at 38 feet.	

08943

STATE OF NEW JERSEY
DEPARTMENT OF ENVIRONMENTAL PROTECTION
DIVISION OF WATER RESOURCES
TRENTON, N.J.

Mail to

Water Allocation

CN 029

Trenton, N.J. 08625

PERMIT TO DRILL WELL

Permit No.

25-33354-9
25-33355-1
25-33356-9
25-33357-7

VALID ONLY AFTER APPROVAL BY THE D.E.P.

COORD #: 25.44.6.23

Owner UNITED STATIONERS INC.
Address MEADOW RD : EXECUTIVE AVE
EDISON, N.J. 08817

Driller Summit Drilling Co inc.
Address 489 Union Ave
BRIDGEWATER, N.J. 08807

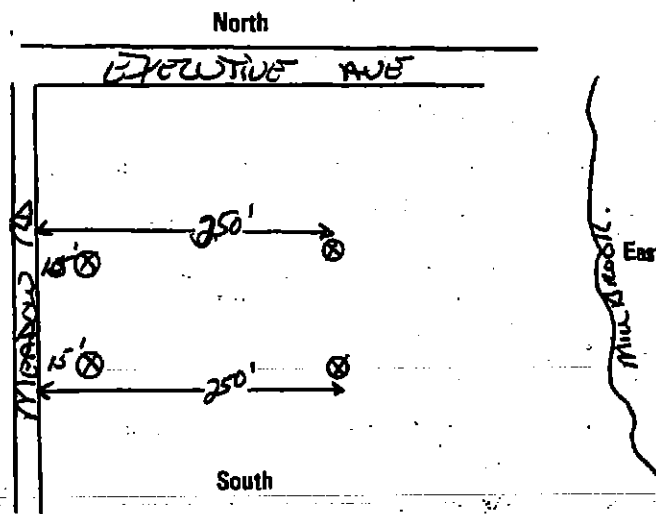
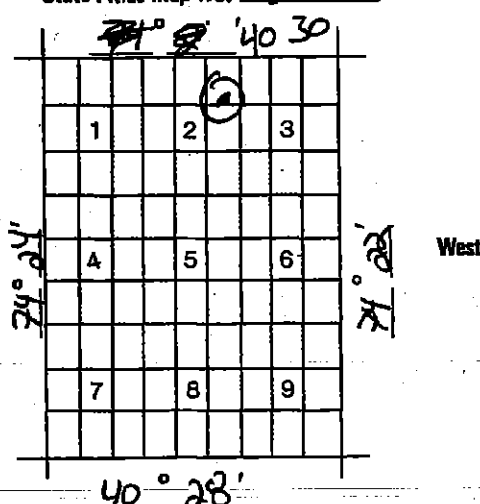
Name of Facility /
Address same

Diameter of Well	4" Inches	Proposed Depth of Well	20' Feet
Proposed Capacity of Pump	GPM	Method of Drilling	(cable-tool, rotary, etc.) <u>Auger</u>
Use of Well (See Reverse)	<u>Monitor</u> (4)		
Drinking Water Supply?	yes (see #6 on reverse) <u>no</u>		

LOCATION OF WELL Driller: MARK LARA Lic # 1486

Lot #	Block #	Municipality	County
1	375-9	EDISON	MIDDLESEX

Draw sketch showing distance and relations of well site to
nearest public roads, streets, septic systems, etc.

State Atlas Map No. 25

SEE REVERSE SIDE FOR IMPORTANT PROVISIONS AND REGULATIONS PERTAINING TO THIS PERMIT. APPROVAL OF THIS PERMIT IS MADE SUBJECT TO ACCEPTANCE OF AND COMPLIANCE WITH THE FOLLOWING ADDITIONAL CONDITIONS.

- ☐ DOMESTIC/PUBLIC NON-COMMUNITY Water Supply Wells shall comply with N.J.A.C. 7:10-12.1 et seq.
- ☐ PUBLIC COMMUNITY Water Supply Wells shall obtain construction and operation permits from the Bureau of Safe Drinking Water in accordance with N.J.A.C. 7:10-11.2 and be constructed in compliance with N.J.A.C. 7:10-11.3.
- ☐ DOMESTIC IRRIGATION SUPPLY - No piping from the well for which the permit applies shall enter any building.
- ☐ HEAT PUMP WELLS - Wells must be a minimum of 50 feet apart and the water must be returned to the same aquifer as the production well. A two hour pump test must be performed on the return well at a rate of 1% times the estimated return flow of water.
- ☐ INDUSTRIAL SUPPLY - A physical connection control permit shall be obtained pursuant to the provisions of N.J.A.C. 7:10-10.1 et seq.
- ☒ REPLACEMENT WELL - Existing well must be sealed by a certified New Jersey licensed well driller.
- ☒ MONITORING PURPOSES ONLY ☐ IRRIGATION PURPOSES ONLY ☐ TEST PURPOSES ONLY
- ☐ PINELANDS - Well must be drilled over 100' deep or a clay layer at least 4' in thickness must be encountered.
- ☐ GEOPHYSICAL LOGS of this well must be made. Permanent pumping equipment SHALL NOT be installed until such logs are made.
- ☐ SAMPLES of cuttings required every _____ feet or change in material.
- ☐ RESULTS of a volatile organic scan must be obtained prior to using the water and submitted to _____
- ☐ MINIMUM distance requirements as per N.J.A.C. 7:10-12.13 have not been met - see attached additional condition(s).

This Space for Approval Stamp

WELL PERMIT APPROVED
Dept. of Environmental Protection
Water Resources/Water Allocation

APR 05 1989

In compliance with N.J.S.A. 58:4A-14, application is made for a permit to drill a well as described above.

Date

3-29-89

Signature of Driller

Signature of Owner

COPIES:

Water Allocation — White

Health Dept. — Yellow

Owner — Blue

Driller — White

WELPMT 097 1853

- WELL RECORD

STATE OF NEW JERSEY
DEPARTMENT OF ENVIRONMENTAL PROTECTION
DIVISION OF WATER RESOURCES

Coord 25.44.6.23
Permit No. 25-33354
Application No. 6

Summit Drilling Company, Inc.

"SUPERIOR QUALITY, VALUE & PERFORMANCE"
489 UNION AVENUE BRIDGEWATER, NJ 08807
1-800-242-6648 (201) 722-4266 FAX (201) 356-1009

25-44-623
25-33354

1. OWNER United Stationers, Inc. ADDRESS Meadow Rd. & Executive Ave., Edison, NJ 08817
Owner's Well No. MW # 1 SURFACE ELEVATION _____
2. LOCATION Same
3. DATE COMPLETED 4/25/89 DRILLER Summit Drilling Co., Inc., Mark Laura # 1486
4. DIAMETER: Top 12 inches Bottom 12 inches TOTAL DEPTH 28 feet
5. CASING: Type PVC Diameter 4 inches Length 18 feet
6. SCREEN: Type PVC Size of Opening .010 Diameter 4 inches Length 10 feet
Range in Depth: Top _____ feet Bottom _____ feet Geologic Formation _____
Tail Piece: Diameter N/A inches Length _____ feet
7. WELL FLOWS NATURALLY N/A Gallons per minute at _____ feet above surface
Water rises to _____ feet above surface
8. RECORD OF TEST: Date N/A Yield _____ Gallons per minute
Static water level before pumping _____ feet below surface
Pumping level _____ feet below surface after _____ hours pumping
Drawdown _____ feet Specific Capacity _____ Gallons per minute per foot of drawdown
How pumped _____ How measured _____
Observed effect on nearby wells _____
9. PERMANENT PUMPING EQUIPMENT:
Type N/A Mfrs. Name _____
Capacity _____ G.P.M. How Driven _____ H.P. _____ R.P.M. _____
Depth of Pump in well _____ feet Depth of Footpiece in well _____ feet
Depth of Air Line in well _____ feet Type of Meter on Pump _____ Size _____ inches
10. USED FOR Monitor AMOUNT: Average _____ Gallons Daily
Maximum _____ Gallons Daily
11. QUALITY OF WATER _____ Sample: Yes _____ No _____
Taste _____ Odor _____ Color _____ Temp. _____ degrees F.
12. LOG Attached Are samples available? _____
13. SOURCE OF DATA Summit Drilling Co., Inc.
14. DATA OBTAINED BY Mark Laura (Lic. #1486) Date 4/25/89

WELL RECORD

STATE OF NEW JERSEY
DEPARTMENT OF ENVIRONMENTAL PROTECTION
DIVISION OF WATER RESOURCESCoord 25.44.6.23Permit No. 25-33355-1Application No. 25.44.6.23**Summit Drilling Company, Inc.**"SUPERIOR QUALITY, VALUE & PERFORMANCE"
489 UNION AVENUE BRIDGEWATER, NJ 08807
1-800-242-6648 (201) 722-4266 FAX (201) 356-1009

25.44.6.23

25-33355-1

1. OWNER United Stationers, Inc. ADDRESS Meadow Rd. & Executive Ave., Edison, NJ 08817
Owner's Well No. MW # 2 SURFACE ELEVATION _____2. LOCATION Same3. DATE COMPLETED 4/24/89 DRILLER Summit Drilling Co., Inc., Mark Laura # 14864. DIAMETER: Top 12 inches Bottom 12 inches TOTAL DEPTH 23 feet5. CASING: Type PVC Diameter 4 inches Length 13 feet6. SCREEN: Type PVC Size of Opening .010 Diameter 4 inches Length 10 feetRange in Depth: Top _____ feet
Bottom _____ feet Geologic Formation _____
Tail Piece: Diameter N/A inches Length _____ feet7. WELL FLOWS NATURALLY N/A Gallons per minute at _____ feet above surface

Water rises to _____ feet above surface

8. RECORD OF TEST: Date N/A Yield _____ Gallons per minuteStatic water level before pumping 16 feet below surface

Pumping level _____ feet below surface after _____ hours pumping

Drawdown _____ feet Specific Capacity _____ Gallons per minute per foot of drawdown

How pumped _____ How measured _____

Observed effect on nearby wells _____

9. PERMANENT PUMPING EQUIPMENT:

Type N/A Mfrs. Name _____

Capacity _____ G.P.M. How Driven _____ H.P. _____ R.P.M. _____

Depth of Pump in well _____ feet Depth of Footpiece in well _____ feet

Depth of Air Line in well _____ feet Type of Meter on Pump _____ Size _____ inches

10. USED FOR Monitor AMOUNT: Average _____ Gallons Daily
Maximum _____ Gallons Daily

11. QUALITY OF WATER _____ Sample: Yes _____ No _____

Taste _____ Odor _____ Color _____ Temp. _____ degrees F.

12. LOG Attached Are samples available? _____13. SOURCE OF DATA Summit Drilling Co., Inc.14. DATA OBTAINED BY Mark Laura (Lic. #1486) Date 4/24/89

WELL RECORD

STATE OF NEW JERSEY
DEPARTMENT OF ENVIRONMENTAL PROTECTION
DIVISION OF WATER RESOURCESCoord 25.44.6.23
Permit No. 25-33356-9
Application No. **Summit Drilling Company, Inc.**"SUPERIOR QUALITY, VALUE & PERFORMANCE"
489 UNION AVENUE BRIDGEWATER, NJ 08807
1-800-242-6648 (201) 722-4266 FAX (201) 356-1009

25.44.6.23

25 33356-9

1. OWNER United Stationers, Inc. ADDRESS Meadow Rd. & Executive Ave., Edison, NJ 08817
Owner's Well No. MW # 3 SURFACE ELEVATION
2. LOCATION Same
3. DATE COMPLETED 4/28/89 DRILLER Summit Drilling Co., Inc., Carmine DeCorso, Jr. # 1222
4. DIAMETER: Top 12 inches Bottom 12 inches TOTAL DEPTH 14 feet
5. CASING: Type PVC Diameter 4 inches Length 6 feet
6. SCREEN: Type PVC Size of Opening .010 Diameter 4 inches Length 10 feet

Range in Depth: Top feet
Bottom feet Geologic Formation Clay shale brunswick
Tail Piece: Diameter N/A inches Length feet

7. WELL FLOWS NATURALLY N/A Gallons per minute at feet above surface

Water rises to feet above surface

8. RECORD OF TEST: Date N/A Yield Gallons per minute

Static water level before pumping 9' feet below surface

Pumping level feet below surface after hours pumping

Drawdown feet Specific Capacity Gallons per minute per foot of drawdown

How pumped How measured

Observed effect on nearby wells

9. PERMANENT PUMPING EQUIPMENT:

Type N/A Mfrs. Name

Capacity G.P.M. How Driven H.P. R.P.M.

Depth of Pump in well feet Depth of Footpiece in well feet

Depth of Air Line in well feet Type of Motor on Pump Size inches

10. USED FOR Monitor AMOUNT: Average Gallons Daily
Maximum Gallons Daily

11. QUALITY OF WATER Sample: Yes No

Taste Odor Color Temp. degrees F.

12. LOG Attached Are samples available?

13. SOURCE OF DATA Summit Drilling Co., Inc.

14. DATA OBTAINED BY Carmine DeCorso, Jr. (Lic. #1222) Date 4/28/89

WELL RECORD

STATE OF NEW JERSEY
DEPARTMENT OF ENVIRONMENTAL PROTECTION
DIVISION OF WATER RESOURCESCoord 25.44.6.23Permit No. 25-33357-7Application No. 25-44-623
25-33357-7**Summit Drilling Company, Inc.**"SUPERIOR QUALITY, VALUE & PERFORMANCE"
489 UNION AVENUE BRIDGEWATER, NJ 08807
1-800-242-6648 (201) 722-4266 FAX (201) 356-1009

1. OWNER United Stationers, Inc. ADDRESS Meadow Rd. & Executive Ave., Edison, NJ 08817
Owner's Well No. MW # 4 SURFACE ELEVATION _____
2. LOCATION Same
3. DATE COMPLETED 4/28/89 DRILLER Summit Drilling Co., Inc., Carmine DeCorso, Jr. # 1222
4. DIAMETER: Top 12 inches Bottom 12 inches TOTAL DEPTH 14 feet
5. CASING: Type PVC Diameter 4 inches Length 6 feet
6. SCREEN: Type PVC Size of Opening .010 Diameter 4 inches Length 10 feet
- Range in Depth: Top _____ feet Bottom _____ feet Geologic Formation Clay shale brunswick
Tail Piece: Diameter N/A inches Length _____ feet
7. WELL FLOWS NATURALLY N/A Gallons per minute at _____ feet above surface
Water rises to _____ feet above surface
8. RECORD OF TEST: Date N/A Yield _____ Gallons per minute
Static water level before pumping 9' feet below surface
Pumping level _____ feet below surface after _____ hours pumping
Drawdown _____ feet Specific Capacity _____ Gallons per minute per foot of drawdown
How pumped _____ How measured _____
Observed effect on nearby wells _____
9. PERMANENT PUMPING EQUIPMENT:
Type N/A Mfrs. Name _____
Capacity _____ G.P.M. How Driven _____ H.P. _____ R.P.M. _____
Depth of Pump in well _____ feet Depth of Footpiece in well _____ feet
Depth of Air Line in well _____ feet Type of Meter on Pump _____ Size _____ inches
10. USED FOR Monitor AMOUNT: Average _____ Gallons Daily
Maximum _____ Gallons Daily
11. QUALITY OF WATER _____ Sample: Yes _____ No _____
Taste _____ Odor _____ Color _____ Temp. _____ degrees F.
12. LOG Attached Are samples available? _____
13. SOURCE OF DATA Summit Drilling Co., Inc.
14. DATA OBTAINED BY Carmine DeCorso, Jr. (Lic. #1222) Date 4/28/89

THIS FORM MUST BE COMPLETED BY THE PERMITTEE OR HIS/HER AGENT

GROUND WATER
MONITORING WELL CERTIFICATION - FORM A - AS-BUILT CERTIFICATION
(One form must be completed for each well)

Name of Permittee: United Stationers Supply Co
Name of Facility: SAME AS ABOVE
Location: 77 EXECUTIVE AVE
Edison N.J. 08817
NJPDDES Permit No: NJ

ENGINEER'S CERTIFICATION

Well Permit Number (As assigned by NJDEP's Water Allocation Section (609-984-6831):

This number must be permanently affixed to the well casing.

2541848-

Owner's Well Number (As shown on the application or plans):

MW-5

Well Completion Date:

9-16-92

Distance from Top of Casing (cap off) to ground surface (one-hundredth of a foot):

-3"

Total Depth of Well (one-tenth of a foot):

18'

Depth to Top of Screen From Top of Casing (one-tenth of a foot):

3'

Screen Length (feet):

15

Screen or Slot Size:

1020

Screen Material:

P.V.C

Casing Material: (PVC, Steel or Other-Specify):

P.V.C

Casing Diameter(Inches):

4

Static Water Level From Top of Casing at The

Time of Certification (one-hundredth of a foot):

4.42

Yield (Gallons per Minute):

1

Length of time Well Pumped or Bailed:

1 Hours 0 Minutes

Lithologic Log:

ATTACH ON BACK

AUTHENTICATION:

I certify under penalty of law that I have personally examined and am familiar with the information submitted in this document and all attachments and that, based on my inquiry of those individuals immediately responsible for obtaining the information, I believe the submitted information is true, accurate and complete. I am aware that there are significant penalties for submitted false information including the possibility of fine and imprisonment.

Arthur Untamo

Licensed Driller's Signature

Arthur Untamo

Licensed Driller's Name
(Please type or print)

SEAL

1241

New Jersey Well Driller's License #

THIS FORM MUST BE COMPLETED BY THE PERMITTEE OR HIS/HER AGENT

GROUND WATER
MONITORING WELL CERTIFICATION - FORM A - AS-BUILT CERTIFICATION
(One form must be completed for each well)

Name of Permittee: UNITED STATIONERS SUPPLY CO.
Name of Facility: SAME AS ABOVE
Location: 77 EXECUTIVE AVE
EDISON, N.J. 08817
NJDES Permit No: NJ

ENGINEER'S CERTIFICATION

Well Permit Number (As assigned by NJDEP's Water Allocation Section (609-984-6831):

This number must be permanently affixed to the well casing.

25-41849-

Owner's Well Number (As shown on the application or plans):

MW-6

Well Completion Date:

9-16-92

Distance from Top of Casing (cap off) to ground surface (one-hundredth of a foot):

-3"

Total Depth of Well (one-tenth of a foot):

18.5'

Depth to Top of Screen From Top of Casing (one-tenth of a foot):

3.5'

Screen Length (feet):

15'

Screen or Slot Size:

.020

Screen Material:

P.V.C

Casing Material: (PVC, Steel or Other-Specify):

P.V.C

Casing Diameter(Inches):

4"

Static Water Level From Top of Casing at The

Time of Certification (one-hundredth of a foot):

4.43

Yield (Gallons per Minute):

1

Length of time Well Pumped or Bailed:

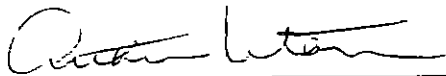
1 Hours 0 Minutes

Lithologic Log:

ATTACH ON BACK

AUTHENTICATION:

I certify under penalty of law that I have personally examined and am familiar with the information submitted in this document and all attachments and that, based on my inquiry of those individuals immediately responsible for obtaining the information, I believe the submitted information is true, accurate and complete. I am aware that there are significant penalties for submitted false information including the possibility of fine and imprisonment.



Licensed Driller's Signature

Arthur V. Lantano

Licensed Driller's Name
(Please type or print)

SEAL

1241

New Jersey Well Driller's License #

THIS FORM MUST BE COMPLETED BY THE PERMITTEE OR HIS/HER AGENT

GROUND WATER
MONITORING WELL CERTIFICATION - FORM A - AS-BUILT CERTIFICATION
(One form must be completed for each well)

Name of Permittee: United Stationers Supply Co.
Name of Facility: SAME AS ABOVE
Location: 77 EZELOHIA AVE
Edison, N.J. 08817
NJDES Permit No: NJ

ENGINEER'S CERTIFICATION

Well Permit Number (As assigned by NJDEP's Water Allocation Section (609-984-6831):
This number must be permanently affixed to the well casing.

2541850-

Owner's Well Number (As shown on the application or plans):

MW-7

Well Completion Date:

9-17-92

Distance from Top of Casing (cap off) to ground surface (one-hundredth of a foot):

-3"

Total Depth of Well (one-tenth of a foot):

39.5'

Depth to Top of Screen From Top of Casing (one-tenth of a foot):

14.5'

Screen Length (feet):

25'

Screen or Slot Size:

.020

Screen Material:

P.V.C.

Casing Material: (PVC, Steel or Other-Specify):

P.V.C.

Casing Diameter(Inches):

4"

Static Water Level From Top of Casing at The

Time of Certification(one-hundredth of a foot):

29

Yield (Gallons per Minute):

1

Length of time Well Pumped or Bailed:

1 Hours 0 Minutes

Lithologic Log:

ATTACH ON BACK

AUTHENTICATION:

I certify under penalty of law that I have personally examined and am familiar with the information submitted in this document and all attachments and that, based on my inquiry of those individuals immediately responsible for obtaining the information, I believe the submitted information is true, accurate and complete. I am aware that there are significant penalties for submitted false information including the possibility of fine and imprisonment.

Arthur Unfano
Licensed Driller's Signature

Arthur Unfano
Licensed Driller's Name
(Please type or print)

SEAL

1241
New Jersey Well Driller's License #

GROUND WATER MONITORING WELL CERTIFICATION - FORM B - LOCATION CERTIFICATION

Name of Permittee: UNITED STATIONERS SUPPLY CO.
Name of Facility: UNITED STATIONERS SUPPLY CO.
Location: EDISON N.J.
NJDES Number: NJ

LAND SURVEYOR'S CERTIFICATION

Well Permit Number (As assigned by NJDEP's Water Allocation Section, 609-984-6831):
This number must be permanently affixed to the well casing.

25-41848-

Longitude (one-tenth of a second):

West 40°-29'-32.2"

Latitude (one-tenth of a second):

North 74°-22'-52.3"

Elevation of Top of Casing (cap off)
(one-hundredth of a foot):

40.27

Owners Well Number (As shown on the application or plans):

MW-5

AUTHENTICATION

I certify under penalty of law that I have personally examined and am familiar with the information submitted in this document and all attachments and that, based on my inquiry of those individuals immediately responsible for obtaining the information, I believe the submitted information is true, accurate and complete. I am aware that there are significant penalties for submitting false information including the possibility of fine and imprisonment.

Charles Di Lorenzo
PROFESSIONAL LAND SURVEYOR'S SIGNATURE

CHESTER P. DILORENZO
PROFESSIONAL LAND SURVEYOR'S NAME
(Please print or type)

SEAL

28966
PROFESSIONAL LAND SURVEYOR'S LICENSE #

The Department reserves the right in cases of violation of permit specified ground water limits or Ground Water Quality Standards (N.J.A.C. 7:9-6.1 et seq.) to require that well be resurveyed to an accuracy of one-hundredth of a second latitude and longitude. This shall not be considered to require a major modification of the NJDES permit.

GROUND WATER MONITORING WELL CERTIFICATION - FORM B - LOCATION CERTIFICATION

Name of Permittee: UNITED STATIONERS SUPPLY CO.
Name of Facility: UNITED STATIONERS SUPPLY CO.
Location: EDISON, N.J.

NJPDES Number: NJ

LAND SURVEYOR'S CERTIFICATION

Well Permit Number (As assigned by NJDEP's Water Allocation Section, 609-984-6831):
This number must be permanently affixed to the well casing.

2 5 - 4 1 8 4 9 -

Longitude (one-tenth of a second):

West 40°-29'-30.5"

Latitude (one-tenth of a second):

North 74°-22'-53.1"

Elevation of Top of Casing (cap off)
(one-hundredth of a foot):

40.11

Owners Well Number (As shown on the application or plans):

MW-6

AUTHENTICATION

I certify under penalty of law that I have personally examined and am familiar with the information submitted in this document and all attachments and that, based on my inquiry of those individuals immediately responsible for obtaining the information, I believe the submitted information is true, accurate and complete. I am aware that there are significant penalties for submitting false information including the possibility of fine and imprisonment.

Chester P. Di Lorenzo
PROFESSIONAL LAND SURVEYOR'S SIGNATURE

CHESTER P. DILORENZO
PROFESSIONAL LAND SURVEYOR'S NAME
(Please print or type)

SEAL

28966
PROFESSIONAL LAND SURVEYOR'S LICENSE #

GROUND WATER MONITORING WELL CERTIFICATION - FORM B - LOCATION CERTIFICATION

Name of Permittee: UNITED STATIONERS SUPPLY CO.
Name of Facility: UNITED STATIONERS SUPPLY CO.
Location: EDISON, N.J.
NJPDES Number: NJ

LAND SURVEYOR'S CERTIFICATION

Well Permit Number (As assigned by NJDEP's Water Allocation Section, 609-984-6831):
This number must be permanently affixed to the well casing.

25-41850-

Longitude (one-tenth of a second):

West 40°-29'-35.4"

Latitude (one-tenth of a second):

North 74°-22'-50.7"

Elevation of Top of Casing (cap off)
(one-hundredth of a foot):

71.02

Owners Well Number (As shown on the application or plans):

MW-7

AUTHENTICATION

I certify under penalty of law that I have personally examined and am familiar with the information submitted in this document and all attachments and that, based on my inquiry of those individuals immediately responsible for obtaining the information, I believe the submitted information is true, accurate and complete. I am aware that there are significant penalties for submitting false information including the possibility of fine and imprisonment.

Chester P. DiLorenzo
PROFESSIONAL LAND SURVEYOR'S SIGNATURE

CHESTER P. DiLORENZO
PROFESSIONAL LAND SURVEYOR'S NAME
(Please print or type)

SEAL

28966
PROFESSIONAL LAND SURVEYOR'S LICENSE #

TITLE:

MONITORING WELL DIAGRAM

PROJECT NUMBER: 92077

PROJECT NAME: UNITED STATIONER'S SUPPLY CO.

PAGE 1OF 1MONITORING WELL MW 5
FLUSH MOUNT CONSTRUCTION DETAILDEPTH BELOW
GROUND SURFACE
(FEET)

0.00

0.60

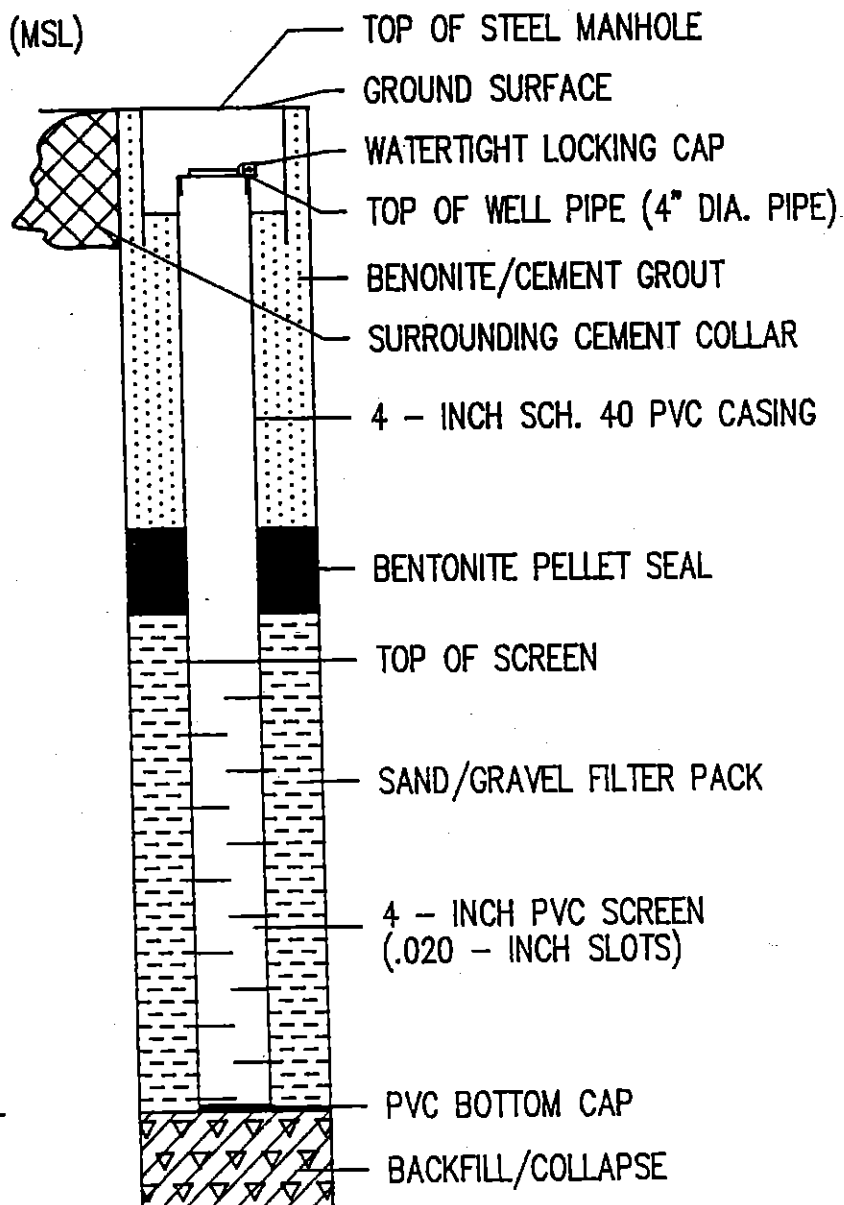
1.00

2.00

3.67

18.00

ELEVATION (MSL)

40.8440.2739.8438.8437.8422.84BY: *Rhea C. Brundman*
DATE: 11/11/93CHECKED BY:
DATE:*JM SORGE, INC.*

TITLE:
MONITORING WELL DIAGRAM

PROJECT NUMBER: 92077
PROJECT NAME: UNITED STATIONER'S SUPPLY CO.

PAGE 1
OF 1

MONITORING WELL MW 6
FLUSH MOUNT CONSTRUCTION DETAIL

DEPTH BELOW
GROUND SURFACE
(FEET)

0.00

0.40

1.00

2.00

3.60

18.50

ELEVATION (MSL)

40.11

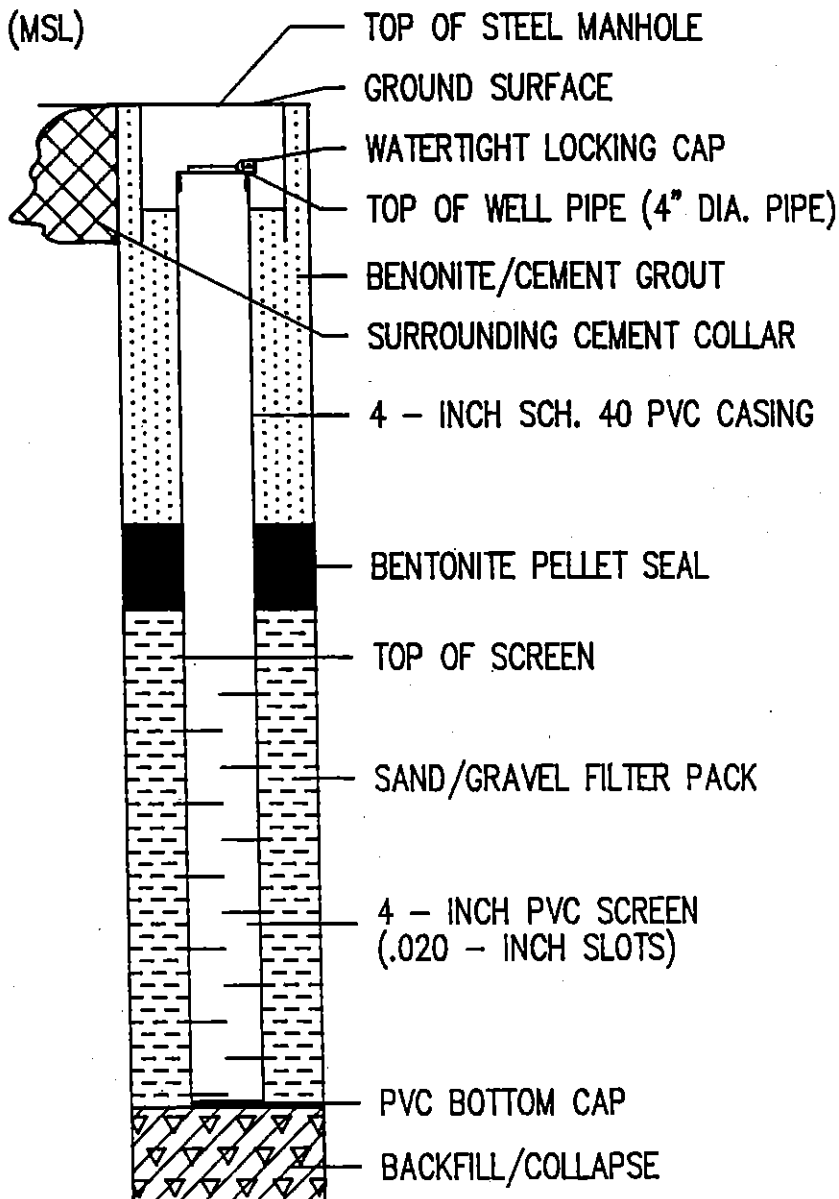
40.51

39.11

38.11

36.51

21.61



BY: *Rhea C. Brundman*
DATE: 11/11/93

CHECKED BY:
DATE:

JM SORGE, INC.

MONITORING WELL MW 7
FLUSH MOUNT CONSTRUCTION DETAIL

DEPTH BELOW
GROUND SURFACE
(FEET)

0.00

0.30

11.50

12.50

14.50

39.50

ELEVATION (MSL)

71.29

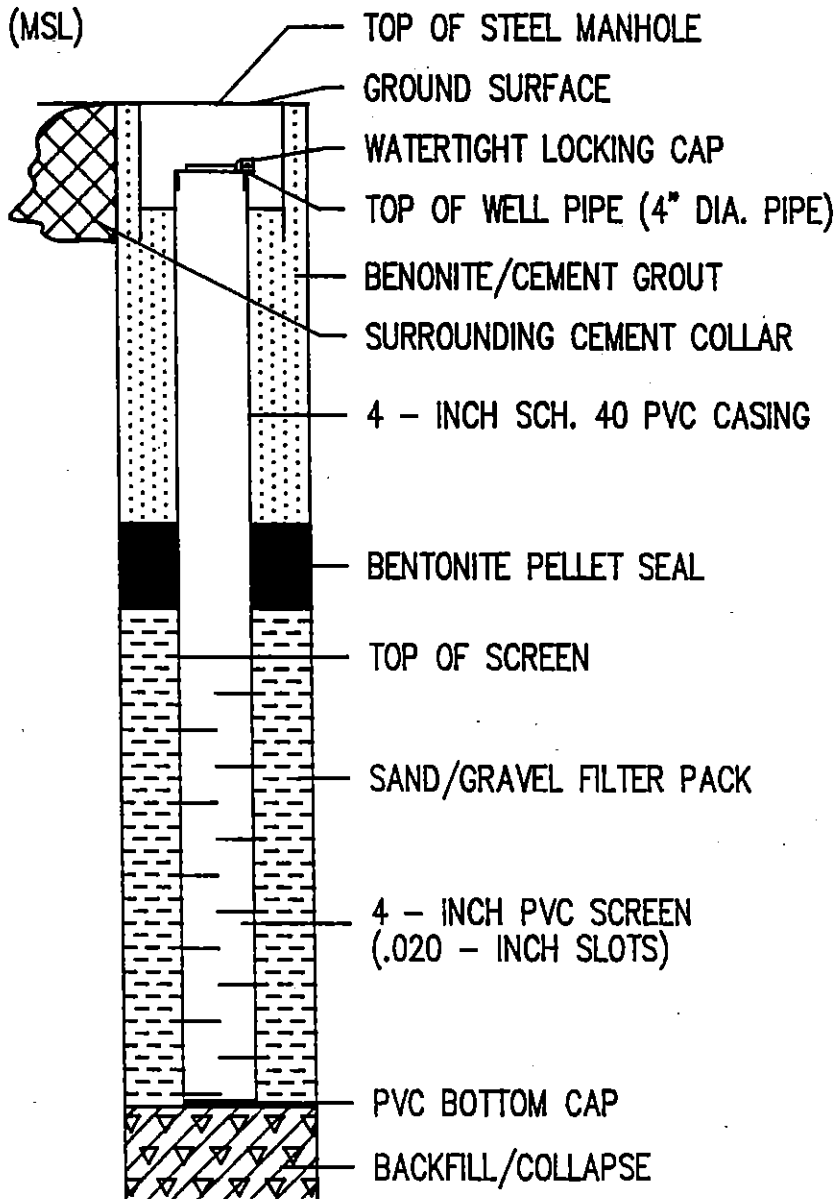
71.02

59.79

58.79

56.79

31.79



BY: *Rhea C. Brundman*
DATE: 11/11/93

CHECKED BY:
DATE:

JM SORGE, INC.



JM Sorge, Inc.

BORING LOG MW-5, PERMIT #2541848
AND WELL CONSTRUCTION DIAGRAM

Page 1 of 1

PROJECT: UNITED STATIONERS

LOCATION: 77 Executive Ave. Edison, NJ

DATE DRILLED/COMPLETED: 09/16/92-SAME

SURFACE ELEVATION: 40.84 Feet MSLD

DRILLING METHOD: 10.75" Hollow Stem Auger

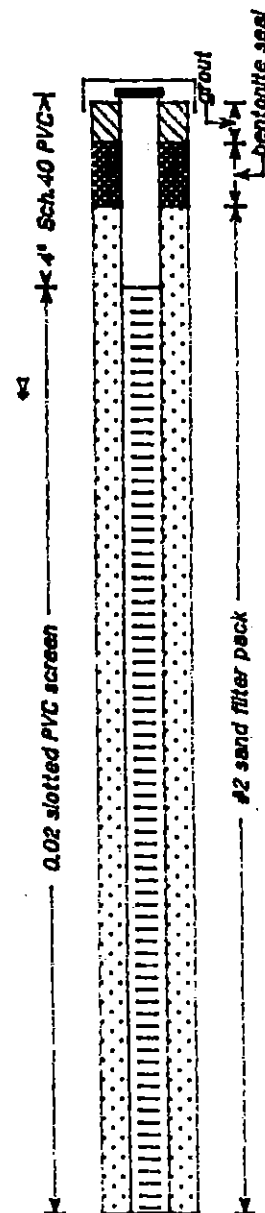
TOTAL DEPTH: 18 Feet

DRILLING COMPANY: MILLTOWN DRILLING & EXCAV.

DRILLER: A.Untamo

GEOLOGIST: T.Ber

DEPTH feet	SAMPLE NUMBER	BLOWS/FT.	PID (ppm)		GRAPHIC LOG	WATER LEVEL	GEOLOGIC DESCRIPTION
			VALUES	PROFILE			
			88				Yellow sandy top soil.
							Yellow sand.
5							Black clayey sand, fine to coarse. Strong petroleum product odor.
							Gray sand, coarse. Strong petroleum product odor.
10							Gray sand, fine to coarse, with minor silt. Strong petroleum product odor.
15							
20							Brown/red clay, soft, moist, with minor fragments of shale. No odor. End of boring at 18 feet.





JM Sorge, Inc.

BORING LOG MW-6, PERMIT #2541849
AND WELL CONSTRUCTION DIAGRAM

Page 1 of 1

PROJECT: UNITED STATIONERS

LOCATION: 77 Executive Ave. Edison, NJ

DATE DRILLED/COMPLETED: 09/16/92-SAME

SURFACE ELEVATION: 40.51 Feet MSLD

DRILLING METHOD: 10.75" Hollow Stem Auger

TOTAL DEPTH: 18.5 Feet

DRILLING COMPANY: MILLTOWN DRILLING & EXCAV.

DRILLER: A.Untamo

GEOLOGIST: T.Ber

DEPTH feet	SAMPLE NUMBER	BLOWS/FT.	PID (ppm)		GRAPHIC LOG	WATER LEVEL	GEOLOGIC DESCRIPTION	
			VALUES	PROFILE				
							Yellow sandy top soil.	
							Yellow sand, fine to coarse, with gravel.	
5								
							Yellow/gray clayey sand, coarse, moist. Petroleum product odor.	
10							D.yellow/gray sand, coarse. Strong petroleum product odor.	
							L.yellow sand, fine to coarse, with minor silt. Wet. Strong petroleum product odor.	
15								
							Brown/red clay, soft, moist, with minor fragments of shale. No odor.	
20							End of boring at 18.5 feet.	

4" Sch.40 PVC

0.02 slotted PVC screen

#2 sand filter pack

grout

bentonite seal



JM Sorge, Inc.

BORING LOG MW-7, PERMIT #2541850
AND WELL CONSTRUCTION DIAGRAM

Page 1 of 1

PROJECT: UNITED STATIONERS

LOCATION: 77 Executive Ave. Edison, NJ

DATE DRILLED/COMPLETED: 09/17/92-SAME

SURFACE ELEVATION: 71.29 Feet MSLD

DRILLING METHOD: 10.75" Hollow Stem Auger

TOTAL DEPTH: 40 Feet

DRILLING COMPANY: MILLTOWN DRILLING & EXCAV.

DRILLER: A.Untamo

GEOLOGIST: T.Ber

DEPTH feet	SAMPLE NUMBER	BLOWS/FT.	PID (ppm)		GRAPHIC LOG	WATER LEVEL	GEOLOGIC DESCRIPTION
			VALUES	PROFILE			
5							Yellow sandy top soil. Yellow/brown sand with pea gravel.
10							D. yellow sand, medium to coarse, with silt and pea gravel. Moist.
15							D. yellow sand, well sorted.
20			2.5				D. yellow sand, well sorted, fine, with pea gravel. Petroleum product odor. Gray discoloring from product.
25							
30			40				Gray sand, fine to medium. Product odor and discoloring disappears with depth.
35							
40							At 38 feet sand becomes yellow/gray. No odor. Black/brown clay, hard, dry. End of boring at 40 feet.

