



**PCE/TCE Northeast  
Contamination Superfund Site  
York, York County, Nebraska**

Community Involvement Plan

October 2019

**SECTION 1**

**Overview of the Community Involvement Plan**

This Community Involvement Plan, or CIP, has been developed for the PCE/TCE, Northeast Contamination Superfund Site, located in York, York County, Nebraska, where the U.S. Environmental Protection Agency is conducting a Superfund removal action and remedial activities. PCE/TCE are acronyms for Tetrachloroethylene, or PCE, and Trichloroethylene, or TCE, which are the contaminants of concern associated with this site. The EPA is conducting activities at the site under the guidelines of the Comprehensive Environmental Response, Compensation, and Liability Act, or CERCLA, a federal law passed in 1980 and commonly called Superfund; the Superfund Amendments and Reauthorization Act, or SARA, enacted in 1986; and the National Oil and Hazardous Substances Pollution Contingency Plan, or NCP, revised in 1990.

Superfund is responsible for cleaning up some of the nation's most contaminated land and responding to environmental emergencies, oil spills, and natural disasters. To protect public health and the environment, the Superfund program focuses on making a visible and lasting difference in communities, ensuring that people can live and work in healthy, vibrant places. Removal actions are generally short-term actions to prevent, minimize, or mitigate damage to human health and welfare or the environment. Removals can be triggered by fires, leaks, explosions, or other releases or threats of releases of hazardous substances. Removal responses may be conducted as emergency or time-critical situations if the release or threat of a release poses a threat to public health, welfare, or the environment. Remedial activities are conducted on sites that have been placed on the National Priorities List, or NPL. The PCE/TCE Northeast Contamination site was placed on the NPL in May 2014.

If you have comments on this community involvement plan, please contact:

Jeff Pritchard  
On-Scene Coordinator  
Phone: (913) 551-7772  
Email: [pritchard.jeffrey@epa.gov](mailto:pritchard.jeffrey@epa.gov)  
U.S. EPA Region 7  
11201 Renner Boulevard  
Lenexa, KS 66219

Owens "Bo" Hull  
Remedial Project Manager  
Phone: (913) 551-7226  
Email: [hull.owens@epa.gov](mailto:hull.owens@epa.gov)  
U.S. EPA Region 7  
11201 Renner Boulevard  
Lenexa, KS 66219

## Community Involvement Plan

### PCE/TCE Northeast Contamination Superfund Site – York, York County, Nebraska

This CIP is intended to:

- Encourage community interest and participation throughout the EPA's involvement at the site.
- Initiate and support two-way communication between the EPA and the community.
- Help ensure that community members understand the Superfund process and the opportunities it presents them to participate in the decision-making process regarding site cleanup.

## SECTION 2

### Site Background

#### Site Description

The PCE/TCE Northeast Contamination site is located in York, York County, Nebraska. The site is located near several industrial facilities/businesses near the intersection of North Division Avenue and West 25<sup>th</sup> Street. The associated groundwater contaminant plume migrates to the east/southeast approximately 3 miles through residential areas. Site maps are included as Appendix C.

#### Site History and EPA Actions to Date

Groundwater contamination at the site has been an ongoing issue since sampling by the Nebraska Department of Health and Human Services in March 1990 discovered volatile organic contaminants, or VOCs, in some of York's municipal wells. VOCs are a group of man-made chemicals that easily become gases or vapors, can migrate through soil and can enter buildings. Subsequent sampling of 20 private wells in northern York found 8 residential wells with levels of VOCs above the maximum contaminant level, or MCL. The EPA conducted a removal action in 1991 providing bottled water to several residents. The state of Nebraska and the EPA have conducted numerous investigations since the site was discovered. A current EPA removal action has been ongoing since 2010. EPA removal action activities have included connecting seven residential properties to city water and the installation of whole-house water filtration systems at four other residential properties. Additionally, the EPA conducts routine private well sampling at residences within the site boundaries to ensure there are no impacts or exposures occurring.

The site was proposed for the NPL in December 2013 and listed on the NPL in May 2014. A focused investigation was conducted between 2016 and 2018 under an Administrative Settlement Agreement and Order on Consent, or AOC. In May 2019, the EPA and the respondents (Kroy Industries, Inc. and Kroy Building Products, Inc.) entered into an AOC to conduct a Remedial Investigation/Feasibility Study.

#### Site Contamination

The contaminants of concern at the site are PCE and TCE, which are VOCs. Well-known sources of VOCs are petroleum products, such as gasoline, dry cleaning solvents, and industrial degreasers. Exposure to PCE and TCE at very high concentrations (particularly in closed, poorly ventilated areas) can cause dizziness, headaches, drowsiness, confusion, nausea, and difficulty speaking and walking. Exposure for longer periods to low levels of PCE or TCE may cause changes in mood, memory, attention, reaction time, and vision. Additional information about these contaminants of concern can be found at: <https://www.atsdr.cdc.gov/>.

PCE ATSDR link: <https://www.atsdr.cdc.gov/toxfaqs/tfacts18.pdf>

TCE ATSDR link: <https://www.atsdr.cdc.gov/toxfaqs/tfacts19.pdf>

Vapor intrusion is the general term given to the migration of hazardous vapors from any subsurface vapor source, such as contaminated soil or groundwater, through the soil and into an overlying building or structure. These vapors can enter buildings through cracks in basements and foundations, as well as through conduits and other openings in the building structure. Vapors can also enter structures that are not intended for human occupancy (e.g., sewers, drain lines, access vaults, etc.) through cracks and other openings. The EPA conducted a vapor intrusion investigation in 2015 and 2016 at residential and commercial properties downgradient of the source areas overlying the plume and determined there were no exposures above established health-based levels of concern.

### **SECTION 3**

#### **Community Involvement Plan Objectives**

The EPA endeavors to keep community members informed of and involved in the site cleanup process. To promote community involvement, the EPA may utilize a variety of tools and techniques. The specific community involvement tools and techniques utilized will be based on the level of community interest, identified issues and concerns, and the complexity and duration of the site investigation and cleanup. A list of community involvement activities conducted by the EPA may include:

- Providing timely, site-specific information to community members so they are able to participate in, or closely follow, site-related activities to the maximum extent they desire and the process allows.
- Providing a direct contact for community members by identifying a Superfund Project Manager who will share information about the site.
- Enhancing communications between the EPA and local officials to help ensure those officials are informed of site-related activities, and that the EPA benefits from the officials' insights regarding the community and its concerns, the site and its history, and local regulatory issues. Appendix A contains a list of local, state, and federal officials.
- Enhancing communications between the EPA and the media, as appropriate, to help ensure reporters are provided timely information about site-related activities and events and are aware of pertinent site-related topics.

The EPA encourages those who want a greater level of participation to consider forming a Community Advisory Group and/or applying for Technical Assistance Plan funding. For additional details on the TAP and CAG programs contact the OSC or RPM for the site (listed on Page 1 of this CIP).

The EPA has held numerous public availability sessions since 2014 to present site status updates, address any community concerns and answer questions. The EPA holds quarterly meetings in York with numerous stakeholders including the local health department, Upper Big Blue Natural Resources District, Nebraska Department of Environment and Energy, and the Agency for Toxic Substances and Disease Registry. Past and future public meetings have been and are likely to be held at the following address:

City of York Municipal Building  
100 East 4th Street  
York, NE 68467

## Community Involvement Plan

### PCE/TCE Northeast Contamination Superfund Site – York, York County, Nebraska

**Reasonable Accommodations:** The EPA is committed to providing reasonable accommodation to individuals with disabilities. If you require a reasonable accommodation to participate in a public meeting, please notify the EPA Reasonable Accommodations Coordinator, Jonathan Cooper, at 800-223-0425 or by email at [cooper.jonathan@epa.gov](mailto:cooper.jonathan@epa.gov). Speech or hearing-impaired individuals should email or call using the local relay service.

#### Site Information Repository

The EPA has developed publicly-available websites that serve as site information repositories. The repositories include documents such as this CIP and other site-related documents. The website addresses to the site information repositories for this site are:

<https://response.epa.gov/pcetceNortheastcontamination>  
<https://www.epa.gov/superfund/pcenortheastcontamination>

## SECTION 4

### Community Background

- Community Profile

York, York County, Nebraska, Demographics

Per the United States Census American Fact Finder website:

[http://factfinder.census.gov/faces/nav/jsf/pages/community\\_facts.xhtml](http://factfinder.census.gov/faces/nav/jsf/pages/community_facts.xhtml):

*Population: 7,766*

*County: York*

*Median Household Income: \$52,889*

*Median Age: 39.4*

- Environmental Justice (EJ)

Environmental justice is the fair treatment and meaningful involvement of all people regardless of race, color, national origin, or income, with respect to the development, implementation, and enforcement of environmental laws, regulations, and policies.

The EPA has this goal for all communities and persons across this nation. It will be achieved when everyone enjoys the same degree of protection from environmental and health hazards and equal access to the decision-making process to have a healthy environment in which to live, learn, and work

The EPA prepared an EJSCREEN for this site in July 2019. None of the indicators were above the level for which the EPA would classify this site as having potential EJ concerns. EJSCREEN is a tool that can help identify areas that may warrant additional consideration, analysis, or outreach. It does not provide a basis for decision-making, but it may help identify potential areas of EJ concern. Users should keep in mind that screening tools are subject to substantial uncertainty in their demographic and environmental data, particularly when looking at small geographic areas. (See Appendix B for EJSCREEN Map.)

- Community Interests and Concerns

Community interviews have been conducted for this site. Community concerns were focused on human health and groundwater. The interviewees were satisfied with the EPA actions at the site.

**Appendix A**  
**List of Contacts**

**A.1 Federal Elected Officials:**

Deb Fischer, U.S. Senator  
454 Russell Senate Office Building  
Washington, DC 20510  
(202) 224-6551

Don Bacon, U.S. Representative  
1024 Longworth House Office Building  
Washington, DC 20515  
Phone: (202) 225-4155

Ben Sasse, U.S. Senator  
107 Russell Senate Office Building  
Washington, DC 20510  
(202) 224-4224

Adrian Smith, U.S. Representative  
2241 Rayburn House Office Building  
Washington, DC 20515  
Phone: (202) 225-6435

Jeff Fortenberry, U.S. Representative  
1514 Longworth House Office  
Washington, DC 20515  
Phone: (202) 225-4806

**A.2 State Elected Officials:**

Pete Ricketts, Governor  
Office of the Governor  
P.O. Box 94848  
Lincoln, NE 68509-4848  
Phone: (402) 471-2244

Mark Kolterman, State Senator  
Room #2004  
P.O. Box 94604  
Lincoln, NE 68509  
Phone: (402) 471-2756

**A.3 City/Local Officials:**

The City of York has provided no specific contact instructions for their city council members, however, they can all be reached at the address listed below:

Barry Redfern, Mayor  
City Council Members  
Ron Mogul – Council President

City of York Municipal Building  
100 East 4th Street  
York, NE 68467  
Phone: (402) 363-2600

## Community Involvement Plan

### PCE/TCE Northeast Contamination Superfund Site – York, York County, Nebraska

#### A.4 EPA Regional Contacts

Jeff Pritchard, On-Scene Coordinator: [pritchard.jeffrey@epa.gov](mailto:pritchard.jeffrey@epa.gov) (913) 551-7772  
Owens “Bo” Hull, Remedial Project Manager: [hull.owens@epa.gov](mailto:hull.owens@epa.gov) (913) 551-7226  
Kristen Nazar, Site Attorney: [nazar.kristen@epa.gov](mailto:nazar.kristen@epa.gov) (913) 551-7450  
Ben Washburn, Community Involvement Coordinator: [washburn.ben@epa.gov](mailto:washburn.ben@epa.gov) (913) 551-7364  
EPA Regional Contacts can be reached by mail at:  
11201 Renner Boulevard  
Lenexa, KS 66219  
(800) 223-0425

#### A.5 Agency for Toxic Substances and Disease Registry

LCDR Erin Evans, MPH, REHS/RS  
Regional Director  
United States Public Health Service  
Agency for Toxic Substances and Disease Registry (ATSDR)  
11201 Renner Boulevard  
[eevans@cdc.gov](mailto:eevans@cdc.gov)  
(913) 551-1311

#### A.6 State Agency

Nancy Harris  
Nebraska Department of Environment and Energy  
1200 N Street, Suite 400  
P.O. Box 98922  
Lincoln, NE 68509  
[nancy.harris@nebraska.gov](mailto:nancy.harris@nebraska.gov)  
(402) 471-1748

#### A.7 Local Media

Melanie Wilkinson  
Managing Editor  
York News-Times  
327 Platte Avenue  
York, NE 68467  
(402) 362-4478

# Community Involvement Plan

## PCE/TCE Northeast Contamination Superfund Site – York, York County, Nebraska

### Appendix B

#### Environmental Justice Screen



#### EJSCREEN Report (Version 2018)



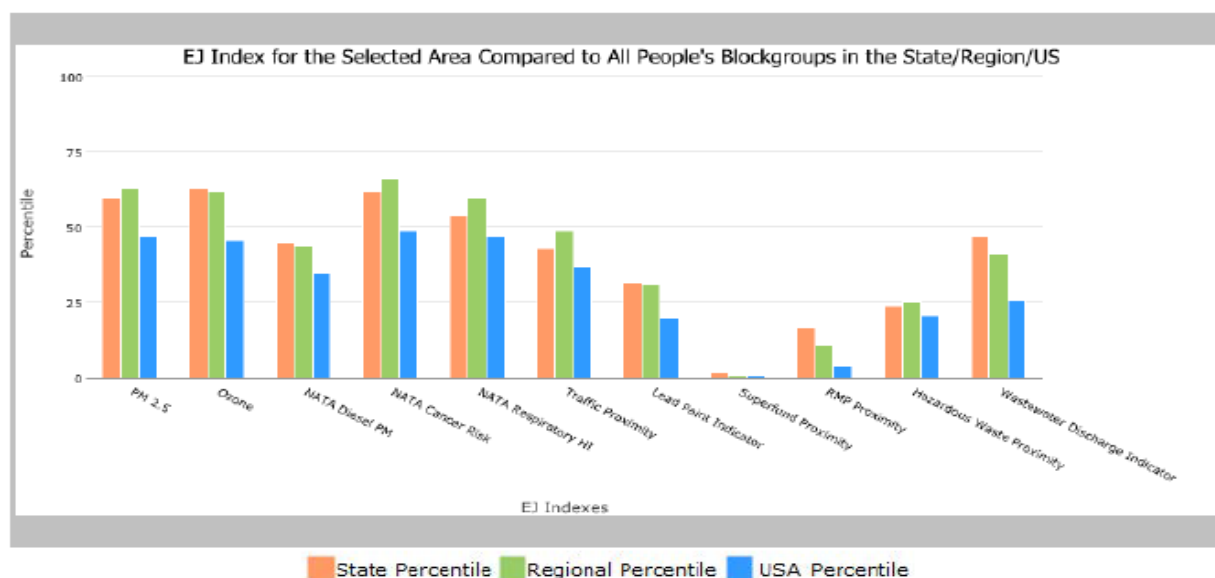
1 mile Ring Centered at 40.888313, -97.600194, NEBRASKA, EPA Region 7

Approximate Population: 1,059

Input Area (sq. miles): 3.14

York, NE

Selected Variables	State Percentile	EPA Region Percentile	USA Percentile
<b>EJ Indexes</b>			
EJ Index for PM2.5	60	63	47
EJ Index for Ozone	63	62	46
EJ Index for NATA* Diesel PM	45	44	35
EJ Index for NATA* Air Toxics Cancer Risk	62	66	49
EJ Index for NATA* Respiratory Hazard Index	54	60	47
EJ Index for Traffic Proximity and Volume	43	49	37
EJ Index for Lead Paint Indicator	32	31	20
EJ Index for Superfund Proximity	2	1	1
EJ Index for RMP Proximity	17	11	4
EJ Index for Hazardous Waste Proximity	24	25	21
EJ Index for Wastewater Discharge Indicator	47	41	26



This report shows the values for environmental and demographic indicators and EJSCREEN indexes. It shows environmental and demographic raw data (e.g., the estimated concentration of ozone in the air), and also shows what percentile each raw data value represents. These percentiles provide perspective on how the selected block group or buffer area compares to the entire state, EPA region, or nation. For example, if a given location is at the 95th percentile nationwide, this means that only 5 percent of the US population has a higher block group value than the average person in the location being analyzed. The years for which the data are available, and the methods used, vary across these indicators. Important caveats and uncertainties apply to this screening-level information, so it is essential to understand the limitations on appropriate interpretations and applications of these indicators. Please see EJSCREEN documentation for discussion of these issues before using reports.

July 05, 2019

1/3

# Community Involvement Plan

## PCE/TCE Northeast Contamination Superfund Site – York, York County, Nebraska



### EJSCREEN Report (Version 2018)

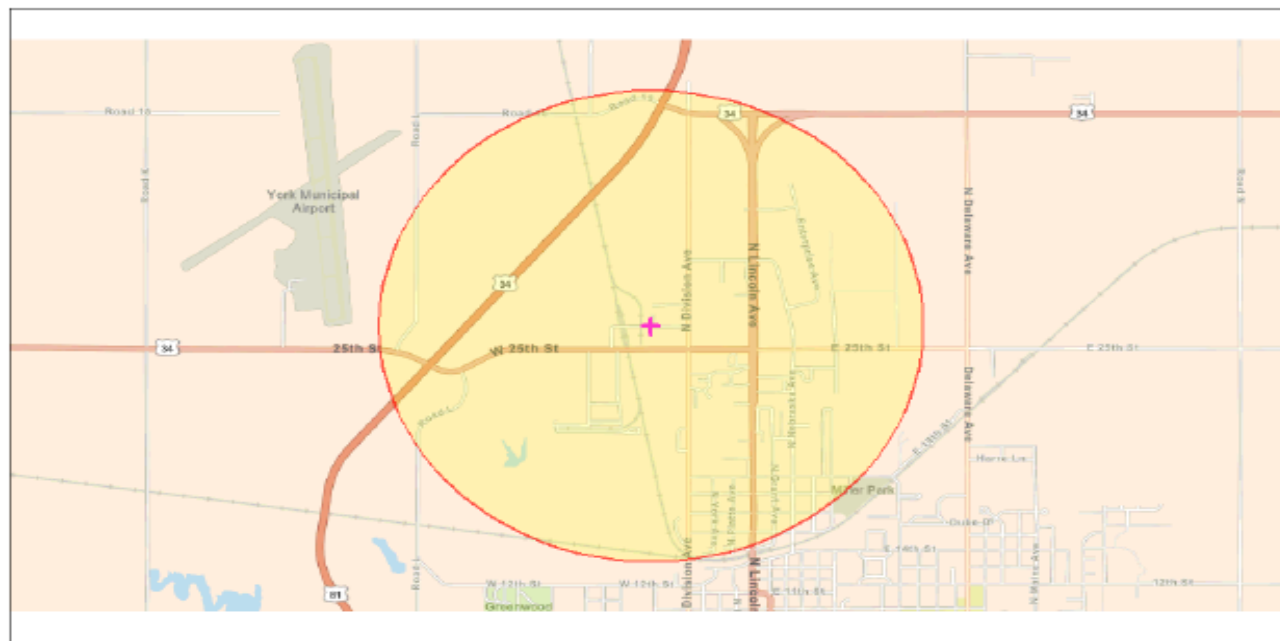


1 mile Ring Centered at 40.888313, -97.600194, NEBRASKA, EPA Region 7

Approximate Population: 1,059

Input Area (sq. miles): 3.14

York, NE



July 5, 2019

Buffer Area  
 Digitized Point

0 0.3 0.6 1.2 mi  
 0 0.5 1 2 km

#### Sites reporting to EPA

Superfund NPL

1

Hazardous Waste Treatment, Storage, and Disposal Facilities (TSDF)

1

# Community Involvement Plan

## PCE/TCE Northeast Contamination Superfund Site – York, York County, Nebraska



### EJSCREEN Report (Version 2018)



1 mile Ring Centered at 40.888313,-97.600194, NEBRASKA, EPA Region 7

Approximate Population: 1,059

Input Area (sq. miles): 3.14

York, NE

Selected Variables	Value	State Avg.	%ile in State	EPA Region Avg.	%ile in EPA Region	USA Avg.	%ile in USA
<b>Environmental Indicators</b>							
Particulate Matter (PM 2.5 in $\mu\text{g}/\text{m}^3$ )	8.19	8.37	29	9.45	7	9.53	24
Ozone (ppb)	40.9	41.8	10	42.8	21	42.5	34
NATA* Diesel PM ( $\mu\text{g}/\text{m}^3$ )	0.857	0.759	66	0.78	60-70th	0.938	50-60th
NATA* Cancer Risk (lifetime risk per million)	25	31	28	38	<50th	40	<50th
NATA* Respiratory Hazard Index	1.1	1.2	41	1.5	<50th	1.8	<50th
Traffic Proximity and Volume (daily traffic count/distance to road)	57	130	59	490	49	600	42
Lead Paint Indicator (% Pre-1960 Housing)	0.49	0.37	64	0.35	70	0.29	76
Superfund Proximity (site count/km distance)	1.3	0.12	98	0.091	99	0.12	99
RMP Proximity (facility count/km distance)	3.4	1.5	88	0.92	95	0.72	96
Hazardous Waste Proximity (facility count/km distance)	0.92	0.6	78	0.82	73	4.3	62
Wastewater Discharge Indicator (toxicity-weighted concentration/m distance)	7.3E-05	0.53	38	2.4	47	30	55
<b>Demographic Indicators</b>							
Demographic Index	22%	25%	57	26%	52	36%	34
Minority Population	5%	20%	22	19%	24	38%	11
Low Income Population	39%	30%	71	32%	67	34%	64
Linguistically Isolated Population	0%	3%	57	2%	65	4%	44
Population With Less Than High School Education	14%	9%	79	10%	75	13%	63
Population Under 5 years of age	5%	7%	27	6%	31	6%	35
Population over 64 years of age	31%	14%	96	15%	96	14%	95

\* The National-Scale Air Toxics Assessment (NATA) is EPA's ongoing, comprehensive evaluation of air toxics in the United States. EPA developed the NATA to prioritize air toxics, emission sources, and locations of interest for further study. It is important to remember that NATA provides broad estimates of health risks over geographic areas of the country, not definitive risks to specific individuals or locations. More information on the NATA analysis can be found at: <https://www.epa.gov/national-air-toxics-assessment>.

For additional information, see: [www.epa.gov/environmentaljustice](http://www.epa.gov/environmentaljustice)

EJSCREEN is a screening tool for pre-decisional use only. It can help identify areas that may warrant additional consideration, analysis, or outreach. It does not provide a basis for decision-making, but it may help identify potential areas of EJ concern. Users should keep in mind that screening tools are subject to substantial uncertainty in their demographic and environmental data, particularly when looking at small geographic areas. Important caveats and uncertainties apply to this screening-level information, so it is essential to understand the limitations on appropriate interpretations and applications of these indicators. Please see EJSCREEN documentation for discussion of these issues before using reports. This screening tool does not provide data on every environmental impact and demographic factor that may be relevant to a particular location. EJSCREEN outputs should be supplemented with additional information and local knowledge before taking any action to address potential EJ concerns.

July 05, 2019

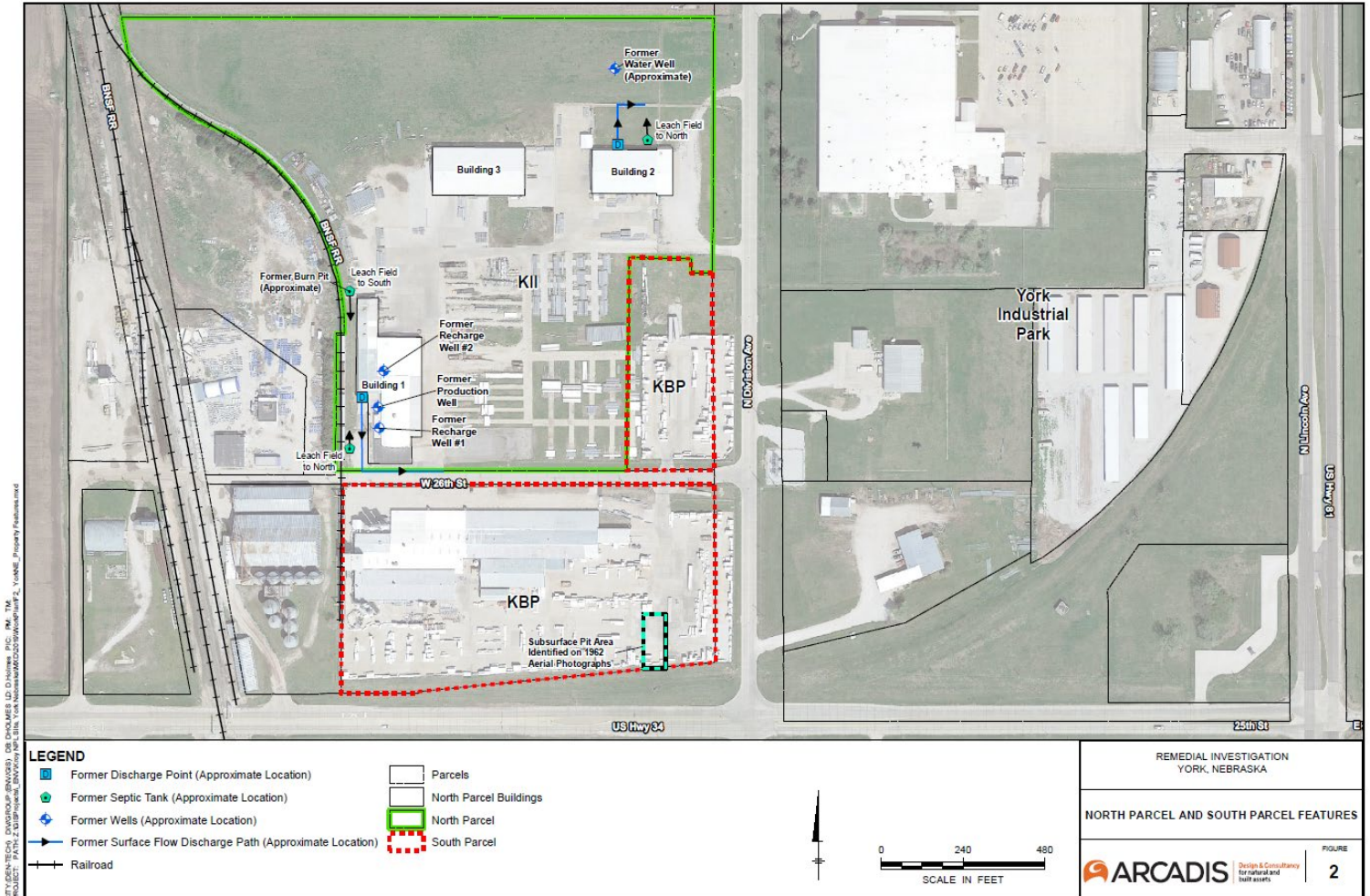
3/3

# Community Involvement Plan

## PCE/TCE Northeast Contamination Superfund Site – York, York County, Nebraska

### Appendix C

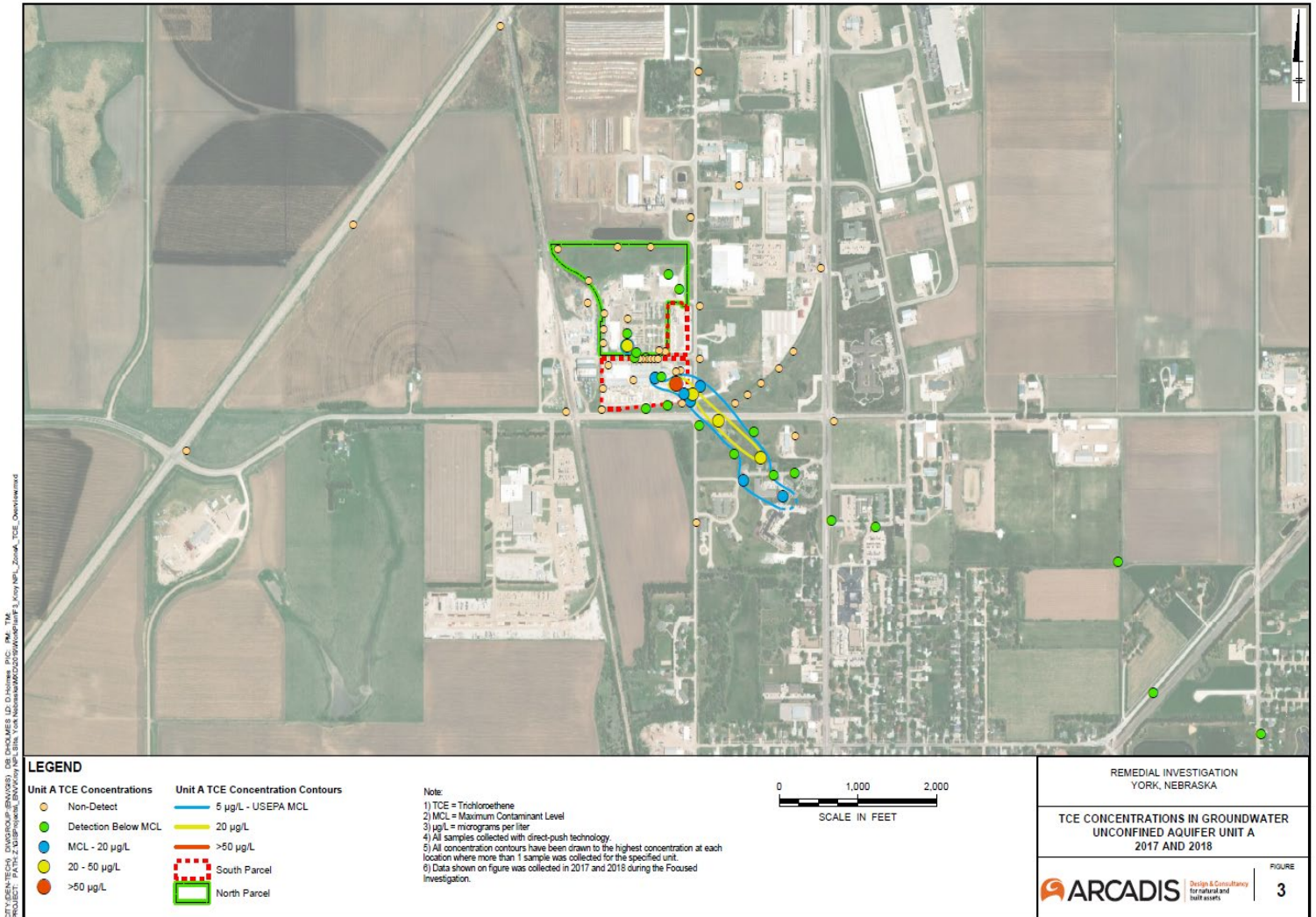
#### Site Location Figure



# Community Involvement Plan

## PCE/TCE Northeast Contamination Superfund Site – York, York County, Nebraska

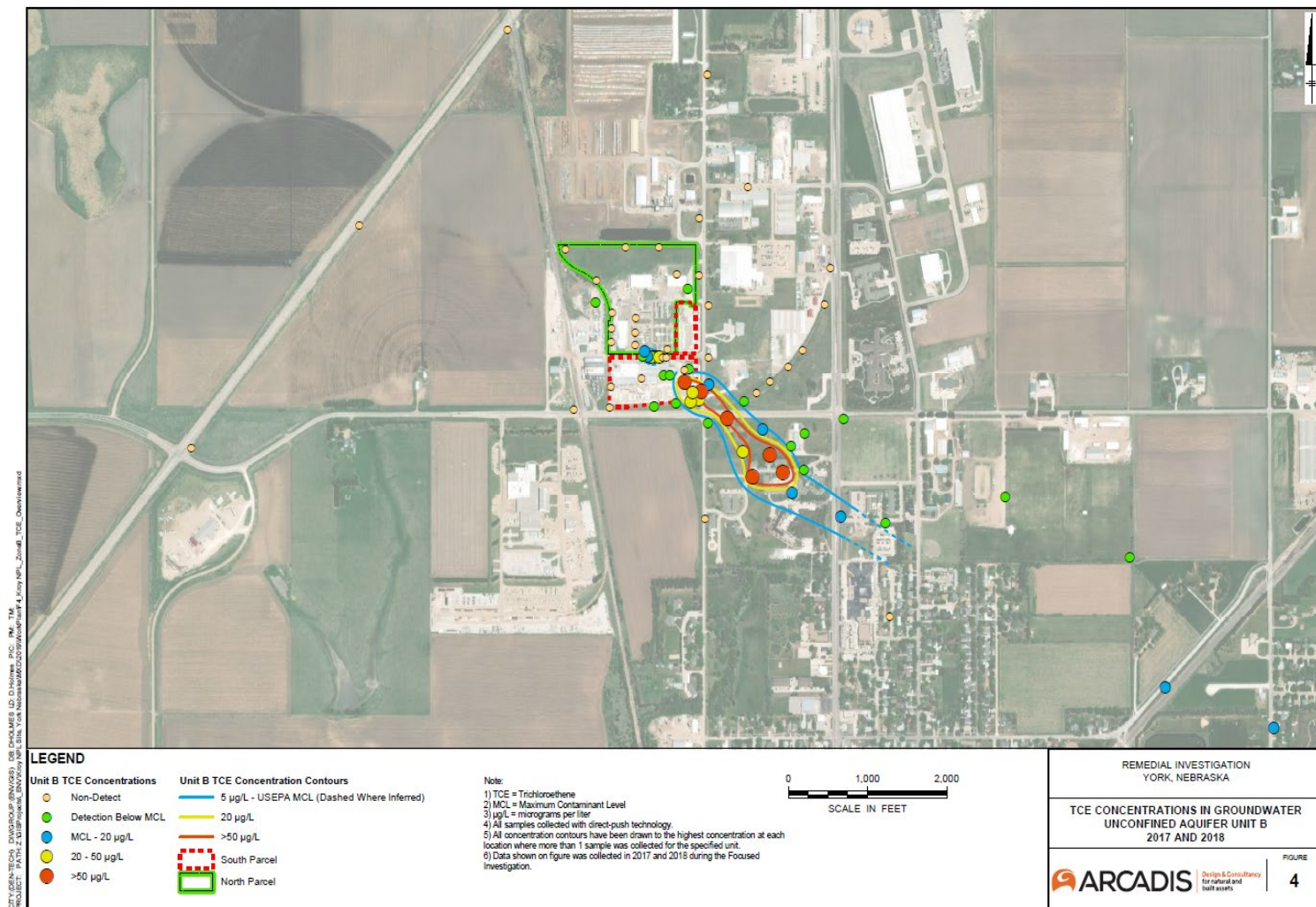
TCE in Groundwater (Unit A) Figure



# Community Involvement Plan

## PCE/TCE Northeast Contamination Superfund Site – York, York County, Nebraska

TCE in Groundwater (Unit B) Figure



# Community Involvement Plan

## PCE/TCE Northeast Contamination Superfund Site – York, York County, Nebraska

TCE in Groundwater (Unit C) Figure

