

Home >> Mines >> Wyoming Mines >> Converse County Mines >> Mine Detail

Bill Smith Mine

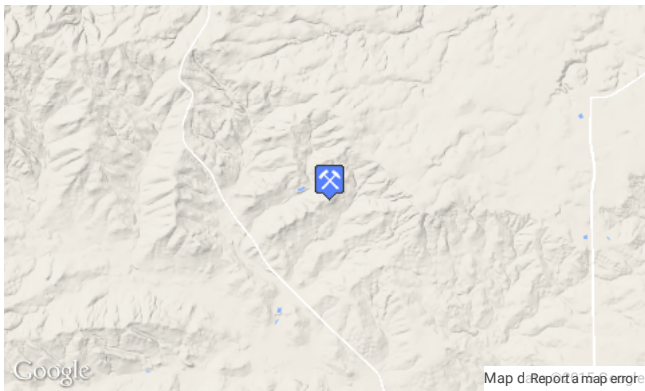
Location: [Converse County, Wyoming](#)

All mine locations were obtained from the USGS Mineral Resources Data System. The locations and other information in this database have not been verified for accuracy. It should be assumed that all mines are on private property.

Bounty® Paper Towels

The Real Magic Is The Roll Doesn't Disappear! Use Bounty Towels Today.

○ ○



State: Wyoming

County: Converse

Elevation: 5,561 feet (1,695 meters)

Latitude: 43.05139

Longitude: -105.68333

Primary: Uranium

[View Larger Map](#)

[AdChoices](#) [Mining Town](#) [Mining Claims](#) [Mine Mining](#) [Nevada Ghost Town](#)

Bill Smith Mine MRDS Details

Get Your Fishing License

Get Your Fishing License For Any State Online at Take Me Fishing.

○ ○

All data originates from the USGS Mineral Resource Data System.

Site Name	Commodity	Location
Primary: "Bill Smith Mine"	Primary: Uranium	State: Wyoming County: Converse District: Highland Flats-Box Creek District
Land Status	Holdings	Workings
		Type: Underground

Ownership	Production	Deposit
Owner Name: Kerr-Mc Gee Nuclear Corp. Company ID: Percent: Home Office: P. O. Box 1120, Glenrock, Wy 82637 Info Year: Years: -		Record Type: Site Operation Category: Producer Deposit Type: Plant Type: Plant Subtype: Operation Type: Unknown Mining Method: Milling Method: Year First Production: Year Last Production: Discovery Year: 1968 Discovery Method: Years of Production: Organization: Significant: N Deposit Size: S

About The MRDS Mines Database
The Western Mining History database of mines is currently in beta form. The database uses the full USGS Mineral Resources Data System (MRDS) database. More information about this section will be posted soon.

Popular Tags

[View all tags](#)

- Historical Commercial Buildings 564
- Historical Homes 240
- Best of Mining Era Structures 143
- Stamp Mills 141 Cemeteries 109 Hotels 107
- 1906 San Francisco Earthquake 65
- Churches 64 Victorian Homes 56
- Mining Machinery 44 Panoramas 43
- Headframes 37
- Western Museum Of Mining And Industry 37
- Gold Dredging 31 Railroads 30 Schools 27
- Winter Scenes 23 Smelters 22
- Commercial Building Interiors 21
- Best Historical Photos 8

[AdChoices](#) [Gold Mining in Colorado](#) [Western Mine](#) [California Gold Mine](#)

Physiography

General Physiographic Area: Interior Plains
 Physiographic Province: Great Plains Province
 Physiographic Section: Missouri Plateau, Unglaciaded
 Physiographic Detail:

Mineral Deposit Model**Orebody****Structure**

Type: L
 Structure:
 Description: Powder River Syncline

Alterations**Rocks**

Name: Sandstone
 Role: Host
 Description:
 Age Type: Host Rock Unit
 Age in Years:
 Dating Method:
 Material Analyzed:
 Age Young: Paleocene
 Age Old:
 Name: Sandstone
 Role: Host
 Description:
 Age Type: Host Rock
 Age in Years:
 Dating Method:
 Material Analyzed:
 Age Young: Paleocene
 Age Old:

Analytical Data**Materials****Comments**

Comment Type: **Comment** CENTER OF N2 TAKEN AS LOCATION
 Location

Comment Type: **Comment** OPERATE UNDERGROUND URANIUM MINE
 Workings

References

Reference Category: **Reference:** ANNUAL REPORT OF THE STATE INSPECTOR OF MINES OF WYOMING, 1980,
 Deposit P.50
Pages: **URL:**

Reference Category: **Reference:** URANIUM GUIDEBOOK FOR WYOMING, 1976, MINOBRAS, P.8-12
 Deposit **URL:**
Pages:

AdChoices

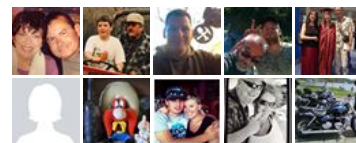
[► Mine Geology](#)[► Mineral Mine](#)[► Mining Geology](#)[► History Museums](#)**Find us on Facebook****Western Mining History**

Like

**Western Mining History**

3 hrs

Miner poses with his dogs at his mountain cabin. Location uncertain but likely Colorado. Note the mine structures at the top of the photo. 1926. Western History/Genealogy Dept., Denver Public Library.

5,883 people like [Western Mining History](#).

Facebook social plugin