



PCB Cleanup to Begin Near Trowbridge Dam

Allied Paper/Portage Creek/Kalamazoo River Site

Trowbridge Township, Michigan

May 2020

Informational meeting postponed

As we continue to adjust to the evolving COVID-19 situation, EPA is taking the necessary steps to ensure that decisions about ongoing activities at Superfund sites are made with the health and safety of communities, EPA staff, state and tribal partners, and contractors as the priority.

Due to current state health advisories and public gathering restrictions, EPA will not be holding an informational meeting on the Trowbridge Dam Area at this time. We will periodically reassess this decision going forward.

Community Advisory Group (CAG)

A CAG has been established as a forum to provide the community updates about EPA's work in and along the Kalamazoo River. The CAG typically meets the fourth Thursday of the month and meetings are currently being conducted virtually. Visit the CAG website for more information or sign up for email notifications at:

<https://www.kalamazoorivercag.org/>

Contact the EPA

If you have any questions or comments, contact:

Diane Russell

Community Involvement Coordinator
1300 Bluff St., Suite 140
Flint, MI 48504
989-395-3493, weekdays,
9:00 a.m. to 5:30 p.m.
russell.diane@epa.gov

For more information

You can learn more about the cleanup online at: <https://response.epa.gov/trowbridgedam>.

U.S. Environmental Protection Agency is working with NCR Corporation, Michigan Department of Natural Resources (MDNR), and Michigan Department of Environment, Great Lakes and Energy to remove PCB-contaminated sediment and soil along the Kalamazoo River near the Trowbridge Dam in Trowbridge Township.

The project will address a 2.4-mile area of PCB-contaminated sediment and soil immediately upstream of the Trowbridge Dam. This portion of the Kalamazoo River is in what EPA calls Area 4 of Operable Unit 5 (*see map, Page 2*) at the Allied Paper Inc./Portage Creek/Kalamazoo River Superfund site. The project may take three or more years to complete.

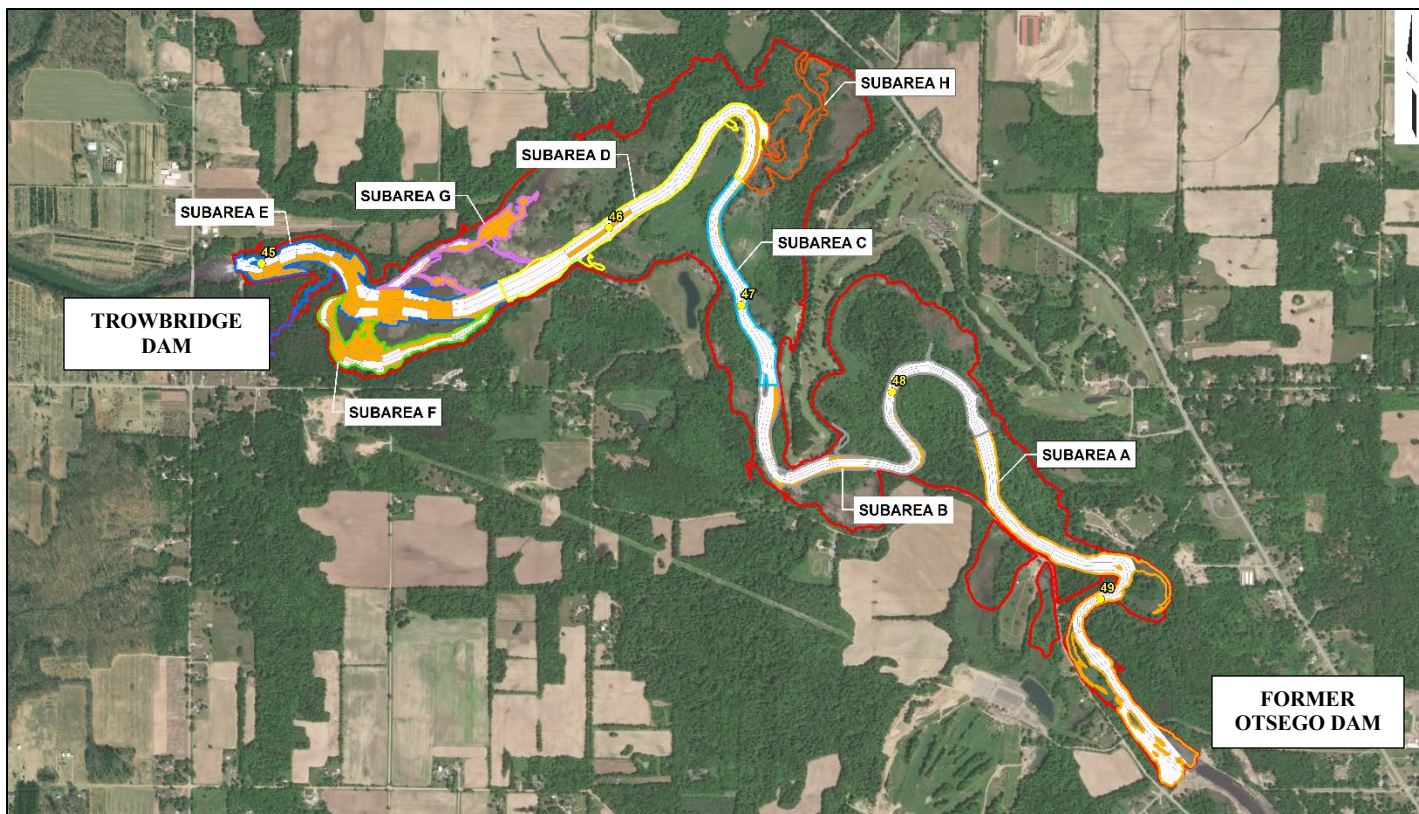
Proposed cleanup

Workers are conducting surveying and sampling this spring to get ready for cleanup work starting next year to dredge sediment from the Kalamazoo River, dig up soil immediately adjacent to the river, stabilize riverbanks to prevent future contamination and erosion, and dispose of contaminated materials at an approved waste landfill. Fences will be put up and signs posted to keep people from being exposed to PCBs during the cleanup. Work crews will access the area at various locations along the river, but primarily from 26th Street. Once the contaminated material is removed, workers will test and monitor the area, fill excavated areas with clean material, and restore the area with native plants. EPA expects thousands of cubic yards of contaminated soil and sediment will be removed. Special precautions are being taken to protect public health during Coronavirus-related restrictions.

Site history

This segment of Trowbridge Dam Area, a part of the Allied Paper Inc./Portage Creek/Kalamazoo River Superfund site, begins near the Lynx golf course and follows the river west to the Trowbridge Dam (*see map, Page 2*). It is almost entirely on land owned by MDNR, and is bordered by wetlands, forested uplands, residences and undeveloped properties.

Between 1954 and the early 1970s, the area was contaminated by wastewater from the recycling process utilized by paper companies that recycled carbonless copy paper containing PCBs. In 1977, the MDNR issued a public health advisory regarding PCB contamination at the site and advised residents not to eat fish caught from the river. In August 1990, the Allied Paper/Portage Creek/Kalamazoo River Superfund site was placed on the National Priorities List, a roster of the nation's hazardous waste sites.



The segment of the Kalamazoo River contaminated with PCBs upstream of the Trowbridge Dam (called Operable Unit 5 within Area 4) to be addressed by this project includes Subareas C, D, E, F & G on the figure.

ALLIED PAPER/PORTAGE CREEK/KALAMAZOO RIVER SITE: PCB Cleanup to Begin Near Trowbridge Dam

FIRST CLASS

RETURN SERVICE REQUESTED

Community Information Office
1300 Bluff St., Suite 140
Flint, MI 48504

United States
Environmental Protection
Agency

