

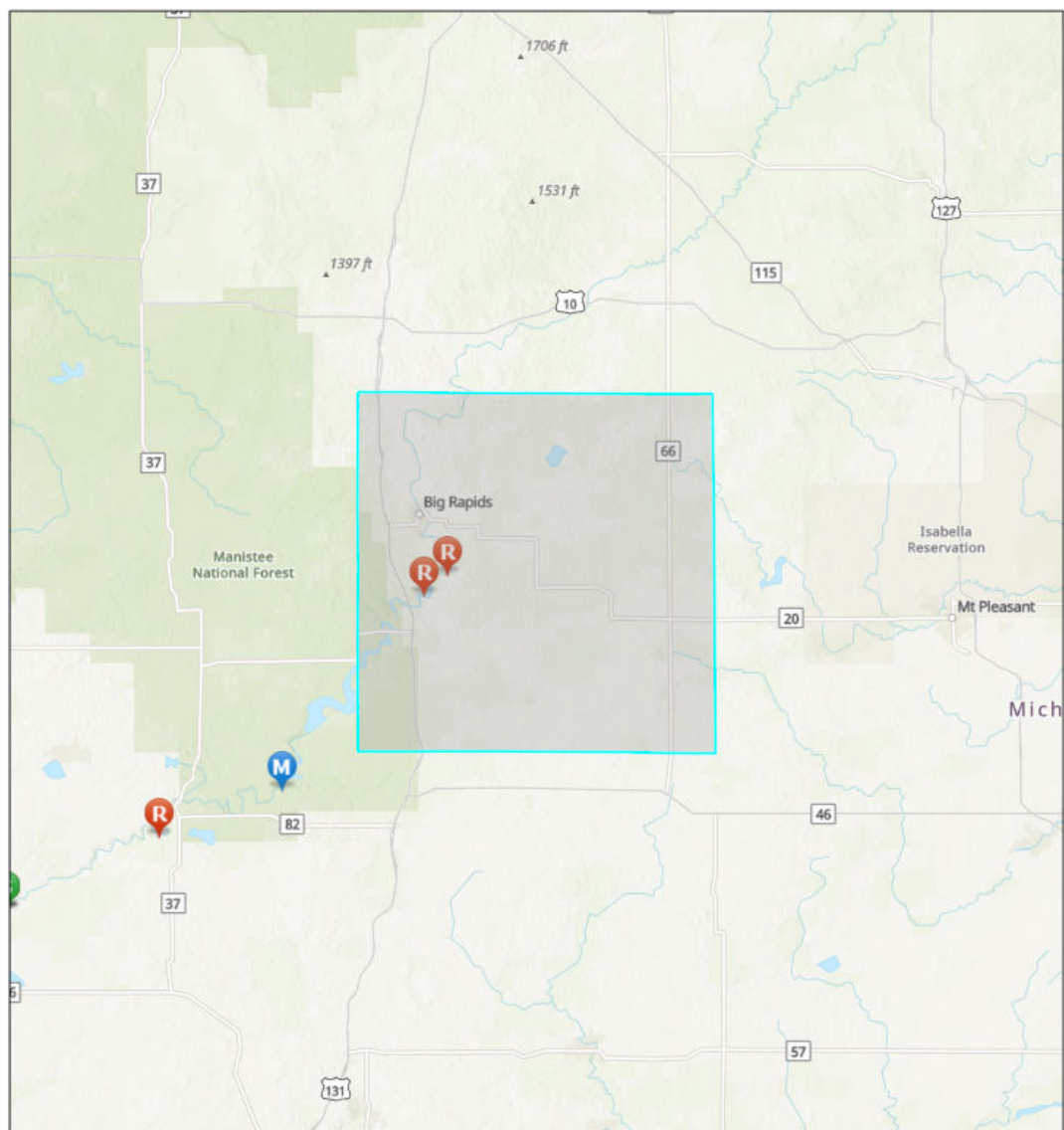


County Fact Sheet Report

Area of Interest (AOI) Information

Area : 365,564.31 acres

Sep 3 2020 14:26:15 Eastern Daylight Time



GRP Response Strategy Survey



Response Data Sheet



Staging Area Only Data Sheet



Monitoring Data Sheet

Sources: Esri, Airbus DS, USGS, NGA, NASA, CGIAR, N Robinson, NCEAS, NLS, OS, NMA, Geodatastrijken, Rijkswaterstaat, GSA, Geoland, FEMA, Intermap and the GIS user community, Sources: Esri, HERE, Garmin, FAO, NOAA, USGS, © OpenStreetMap contributors, and the GIS User Community, Upper Mississippi River Basin Association, Great Lakes Commission, USEPA

Mecosta County, Michigan

Summary

Name	Count	Area(acres)	Length(mi)
Local EOC	1	N/A	N/A
Public Health Departments	0	N/A	N/A
County Contacts	1	365,564.31	N/A
State Contacts	1	365,564.31	N/A
Major Cities and Towns	6	N/A	N/A
Tribal Lands	0	0	N/A
Tribal Lands (Cont'd)	0	0	N/A
Hospitals	1	N/A	N/A
Hospitals (Cont'd)	1	N/A	N/A
Urgent Care Facilities	0	N/A	N/A
Water Intakes	0	N/A	N/A
Water Intakes (Cont'd)	0	N/A	N/A
Wastewater Treatment Facilities	6	N/A	N/A
Special Designated Areas	119	1,881.89	N/A
Special Designated Areas (Cont'd)	119	1,881.89	N/A
Managed Lands	6	19,587.18	N/A
Managed Lands (Cont'd)	6	19,587.18	N/A
Other Environmentally Sensitive Areas	0	0	N/A
Other Environmentally Sensitive Areas (Cont'd)	0	0	N/A
Historic Places	0	N/A	N/A
Archaeological Sites	0	0	N/A
Threatened and Endangered Species	2	731,128.63	N/A
Aboveground Storage Tanks	1	N/A	N/A
Aboveground Storage Tanks (Cont'd)	1	N/A	N/A
Hazardous Materials Storage	3	N/A	N/A
Hazardous Materials Storage (Cont'd)	3	N/A	N/A
Facility Response Plan (FRP) Facilities	0	N/A	N/A
Risk Management Plan (RMP) Facilities	1	N/A	N/A
EPLAN/Tier II Facilities	29	N/A	N/A
Railroads	0	N/A	0
Petroleum Pipelines	0	N/A	0
Oil and Natural Gas Pipelines	299	N/A	274.74
Marinas	3	N/A	N/A
Boat Access	22	N/A	N/A
Navigational Locks and Dams	0	N/A	N/A
Non-navigational Dams	16	N/A	N/A
Rivers and Streams	26	N/A	119.99

Lakes and Ponds	146	8,223.56	N/A
Response Strategies	0	N/A	N/A
Response Strategies (Cont'd)	0	N/A	N/A
Response Strategies (Cont'd)	0	N/A	N/A

Local EOC

#	Name	Address	City	Phone	Has Generator	Directions	Count
1	MECOSTA COUNTY EMERGENCY OPERATIONS CENTER	225 SOUTH STEWART AVENUE	BIG RAPIDS	231-592-0150	Y	EAST SIDE OF S STEWART AVE BETWEEN ELM STREET AND LINDEN STREET	1

County Contacts

#	County	Point of Contact	Emergency Management Phone	LEPC Chair	LEPC Phone	Local Health Department Phone	Area(acres)
1	Mecosta, Michigan	Scott Schroeder	231-592-9484	Scott Schroeder	231-592-9484	231-873-2193	365,564.31

State Contacts

#	State Emergency Management Phone	24-hr Emergency Management Phone	State Health Department Phone	Homeland Security	Area(acres)
1	517-284-3946	800-292-4706	517-335-9030	313-596-2590	365,564.31

Major Cities and Towns

#	Name	Population	Elevation (Feet)	Count
1	Big Rapids	10601	928	1
2	Canadian Lakes	2756	968	1
3	Barryton	355	981	1
4	Mecosta	457	981	1
5	Morley	493	899	1
6	Stanwood	211	961	1

Hospitals

#	Name	Address	City	Phone	Type	Status	Count
1	SPECTRUM HEALTH BIG RAPIDS HOSPITAL	605 OAK STREET	BIG RAPIDS	NOT AVAILABLE	GENERAL ACUTE CARE	OPEN	1

Hospitals (Cont'd)

#	Name	City	Trauma Level	Helipad	Number of Beds	Owner	Count
1	SPECTRUM HEALTH BIG RAPIDS HOSPITAL	BIG RAPIDS	NOT AVAILABLE	Y	69	NON-PROFIT	1

Wastewater Treatment Facilities

#	Name	Address	City	Waterbody	Count
1	WHEATLAND TWP WWTP	2908 AIRPORT RD	REMUS	PONY CREEK	2
2	BARRYTON WWSL	AT THE CORNER OF 20TH AVE AND	BARRYTON	CHIPPEWA RIVER	2
3	BIG RAPIDS WWTP	500 RIVER STREET	BIG RAPIDS	MUSKEGON RIVER	2

Special Designated Areas

#	Name	Agency	Address	City	Emergency Phone	Phone	Area(acres)
1	Little Muskegon River	Michigan DNR Fisheries Division	U	U	800-292-4706 (in-state); 517-373-7660 (out-state)	517-373-1280	231.20
2	Muskegon River (Mecosta, Osceola)	Michigan DNR Fisheries Division	U	U	800-292-4706 (in-state); 517-373-7660 (out-state)	517-373-1280	192.74
3	Wetlands Reserve Program	Natural Resources Conservation Service	30th Ave.	Barryton	231-592-0158	616-942-4111	177.57
4	Wetlands Reserve Program	Natural Resources Conservation Service	Jefferson Rd.	Lakeview	231-592-0158	616-942-4111	98.49
5	Wetlands Reserve Program	Natural Resources Conservation Service	Taft Rd.	Big Rapids	231-592-0158	616-942-4111	82.42
6	unnamed creek trib.	Michigan DNR Fisheries Division	U	U	800-292-4706 (in-state); 517-373-7660 (out-state)	517-373-1280	61.99
7	Groshon Easement	Chippewa Watershed Conservancy	Dublin Dr.	Morley	231-592-0158	989-644-5045	60.03
8	E Branch Little Muskegon River	Michigan DNR Fisheries Division	U	U	800-292-4706 (in-state); 517-373-7660 (out-state)	517-373-1280	48.42
9	Big Creek trib.	Michigan DNR Fisheries Division	U	U	800-292-4706 (in-state); 517-373-7660 (out-state)	517-373-1280	39.80
10	Roundy Branch trib.	Michigan DNR Fisheries Division	U	U	800-292-4706 (in-state); 517-373-7660 (out-state)	517-373-1280	36.47
11	Dye Creek	Michigan DNR Fisheries Division	U	U	800-292-4706 (in-state); 517-373-7660 (out-state)	517-373-1280	34.39
12	Palmer Creek trib.	Michigan DNR Fisheries Division	U	U	800-292-4706 (in-state); 517-373-7660 (out-state)	517-373-1280	30.88
13	Wetlands Reserve Program	Natural Resources Conservation Service	17 Mile Rd.	Barryton	231-592-0158	616-942-4111	30.44
14	Paris Creek trib.	Michigan DNR Fisheries Division	U	U	800-292-4706 (in-state); 517-373-7660 (out-state)	517-373-1280	30.41
15	Wetlands Reserve Program	Natural Resources Conservation Service	7 Mile Rd.	Stanwood	231-592-0158	616-942-4111	27.75
16	Starks Property	Little Forks Conservancy	19 Mile Rd.	Barryton	231-592-0150	989-935-4886	27.64

17	Burden Lake trib.	Michigan DNR Fisheries Division	U	U	800-292-4706 (in-state); 517-373-7660 (out-state)	517-373-1280	27.04
18	MI-113576	Little Forks Conservancy	19 Mile Rd.	Barryton	231-592-0158	989-835-4886	24.11
19	Big Creek (Mecosta)	Michigan DNR Fisheries Division	U	U	800-292-4706 (in-state); 517-373-7660 (out-state)	517-373-1280	22.43
20	Dalziel Creek	Michigan DNR Fisheries Division	U	U	800-292-4706 (in-state); 517-373-7660 (out-state)	517-373-1280	22.43
21	99-09-0723	Michigan DEQ	Waldron Way	Big Rapids	231-592-0158	517-241-7734	22.37
22	Blodgett Creek	Michigan DNR Fisheries Division	U	U	800-292-4706 (in-state); 517-373-7660 (out-state)	517-373-1280	21.33
23	Macks Creek	Michigan DNR Fisheries Division	U	U	800-292-4706 (in-state); 517-373-7660 (out-state)	517-373-1280	20.58
24	N Branch Chippewa River	Michigan DNR Fisheries Division	U	U	800-292-4706 (in-state); 517-373-7660 (out-state)	517-373-1280	20.34
25	Pogy Creek	Michigan DNR Fisheries Division	U	U	800-292-4706 (in-state); 517-373-7660 (out-state)	517-373-1280	18.68
26	06-54-0058	Michigan DEQ	Tullymore Dr.	Stanwood	231-592-0158	517-241-7734	17.04
27	Wetlands Reserve Program	Natural Resources Conservation Service	50th Ave.	Blanchard	231-592-0158	616-942-4111	16.52
28	Mitchell Creek (Mecosta)	Michigan DNR Fisheries Division	U	U	800-292-4706 (in-state); 517-373-7660 (out-state)	517-373-1280	16.43
29	Macks Creek trib.	Michigan DNR Fisheries Division	U	U	800-292-4706 (in-state); 517-373-7660 (out-state)	517-373-1280	15.68
30	Sylvester Creek (Mecosta)	Michigan DNR Fisheries Division	U	U	800-292-4706 (in-state); 517-373-7660 (out-state)	517-373-1280	15.21
31	Little Muskegon River trib.	Michigan DNR Fisheries Division	U	U	800-292-4706 (in-state); 517-373-7660 (out-state)	517-373-1280	14.99
32	Paris Creek	Michigan DNR Fisheries Division	U	U	800-292-4706 (in-state); 517-373-7660 (out-state)	517-373-1280	14.69
33	Gilbert Creek (Mecosta)	Michigan DNR Fisheries Division	U	U	800-292-4706 (in-state); 517-373-7660 (out-state)	517-373-1280	14.27

34	Quigley Creek	Michigan DNR Fisheries Division	U	U	800-292-4706 (in-state); 517-373-7660 (out-state)	517-373-1280	13.72
35	Schrader Creek	Michigan DNR Fisheries Division	U	U	800-292-4706 (in-state); 517-373-7660 (out-state)	517-373-1280	13.48
36	Rattail Creek	Michigan DNR Fisheries Division	U	U	800-292-4706 (in-state); 517-373-7660 (out-state)	517-373-1280	13.47
37	Wetlands Reserve Program	Natural Resources Conservation Service	Balsam Rd.	Evart	231-592-0158	616-942-4111	13.25
38	Rosy Run trib.	Michigan DNR Fisheries Division	U	U	800-292-4706 (in-state); 517-373-7660 (out-state)	517-373-1280	13.14
39	Roundy Branch	Michigan DNR Fisheries Division	U	U	800-292-4706 (in-state); 517-373-7660 (out-state)	517-373-1280	12.36
40	Cold Spring Creek	Michigan DNR Fisheries Division	U	U	800-292-4706 (in-state); 517-373-7660 (out-state)	517-373-1280	12.33
41	Mitchell Creek trib.	Michigan DNR Fisheries Division	U	U	800-292-4706 (in-state); 517-373-7660 (out-state)	517-373-1280	11.50
42	Betts Creek	Michigan DNR Fisheries Division	U	U	800-292-4706 (in-state); 517-373-7660 (out-state)	517-373-1280	11.27
43	Sylvester Creek trib.	Michigan DNR Fisheries Division	U	U	800-292-4706 (in-state); 517-373-7660 (out-state)	517-373-1280	11.01
44	Buckhorn Creek	Michigan DNR Fisheries Division	U	U	800-292-4706 (in-state); 517-373-7660 (out-state)	517-373-1280	10.01
45	Little Muskegon River, E Branch trib.	Michigan DNR Fisheries Division	U	U	800-292-4706 (in-state); 517-373-7660 (out-state)	517-373-1280	9.90
46	Blodgett Creek trib.	Michigan DNR Fisheries Division	U	U	800-292-4706 (in-state); 517-373-7660 (out-state)	517-373-1280	9.28
47	00-54-0053	Michigan DEQ	Perry Ave.	Big Rapids	231-592-0158	517-241-7734	9.24
48	Muskegon River trib.	Michigan DNR Fisheries Division	U	U	800-292-4706 (in-state); 517-373-7660 (out-state)	517-373-1280	9.14
49	S Mitchell Creek	Michigan DNR Fisheries Division	U	U	800-292-4706 (in-state); 517-373-7660 (out-state)	517-373-1280	8.99

50	Tamarack Creek	Michigan DNR Fisheries Division	U	U	800-292-4706 (in-state); 517-373-7660 (out-state)	517-373-1280	8.73
51	Ladner Creek	Michigan DNR Fisheries Division	U	U	800-292-4706 (in-state); 517-373-7660 (out-state)	517-373-1280	8.58
52	Higginson Creek	Michigan DNR Fisheries Division	U	U	800-292-4706 (in-state); 517-373-7660 (out-state)	517-373-1280	7.94
53	Byers Creek	Michigan DNR Fisheries Division	U	U	800-292-4706 (in-state); 517-373-7660 (out-state)	517-373-1280	7.92
54	Butts Creek	Michigan DNR Fisheries Division	U	U	800-292-4706 (in-state); 517-373-7660 (out-state)	517-373-1280	7.50
55	Gilbert Creek trib.	Michigan DNR Fisheries Division	U	U	800-292-4706 (in-state); 517-373-7660 (out-state)	517-373-1280	7.27
56	Rattail Creek trib.	Michigan DNR Fisheries Division	U	U	800-292-4706 (in-state); 517-373-7660 (out-state)	517-373-1280	7.24
57	Bennett Creek	Michigan DNR Fisheries Division	U	U	800-292-4706 (in-state); 517-373-7660 (out-state)	517-373-1280	6.90
58	Decker Creek	Michigan DNR Fisheries Division	U	U	800-292-4706 (in-state); 517-373-7660 (out-state)	517-373-1280	6.89
59	Shinglebolt Creek trib.	Michigan DNR Fisheries Division	U	U	800-292-4706 (in-state); 517-373-7660 (out-state)	517-373-1280	6.88
60	Shinglebolt Creek	Michigan DNR Fisheries Division	U	U	800-292-4706 (in-state); 517-373-7660 (out-state)	517-373-1280	6.66
61	unnamed creek	Michigan DNR Fisheries Division	U	U	800-292-4706 (in-state); 517-373-7660 (out-state)	517-373-1280	6.42
62	Pine River (Isabella)	Michigan DNR Fisheries Division	U	U	800-292-4706 (in-state); 517-373-7660 (out-state)	517-373-1280	5.82
63	Quigley Creek trib.	Michigan DNR Fisheries Division	U	U	800-292-4706 (in-state); 517-373-7660 (out-state)	517-373-1280	5.57
64	Pine River trib.	Michigan DNR Fisheries Division	U	U	800-292-4706 (in-state); 517-373-7660 (out-state)	517-373-1280	5.40

65	Brown Creek (Mecosta)	Michigan DNR Fisheries Division	U	U	800-292-4706 (in-state); 517-373-7660 (out-state)	517-373-1280	5.23
66	Handy Creek	Michigan DNR Fisheries Division	U	U	800-292-4706 (in-state); 517-373-7660 (out-state)	517-373-1280	4.77
67	Schrader Creek trib.	Michigan DNR Fisheries Division	U	U	800-292-4706 (in-state); 517-373-7660 (out-state)	517-373-1280	4.77
68	Haymarsh Creek	Michigan DNR Fisheries Division	U	U	800-292-4706 (in-state); 517-373-7660 (out-state)	517-373-1280	4.46
69	Rosy Run	Michigan DNR Fisheries Division	U	U	800-292-4706 (in-state); 517-373-7660 (out-state)	517-373-1280	4.21
70	Jewel Creek	Michigan DNR Fisheries Division	U	U	800-292-4706 (in-state); 517-373-7660 (out-state)	517-373-1280	4.09
71	Higginson Creek trib.	Michigan DNR Fisheries Division	U	U	800-292-4706 (in-state); 517-373-7660 (out-state)	517-373-1280	3.82
72	Dye Creek trib.	Michigan DNR Fisheries Division	U	U	800-292-4706 (in-state); 517-373-7660 (out-state)	517-373-1280	3.32
73	Palmer Creek (Mecosta)	Michigan DNR Fisheries Division	U	U	800-292-4706 (in-state); 517-373-7660 (out-state)	517-373-1280	2.77
74	Handy Creek trib.	Michigan DNR Fisheries Division	U	U	800-292-4706 (in-state); 517-373-7660 (out-state)	517-373-1280	2.74
75	Jewel Creek trib.	Michigan DNR Fisheries Division	U	U	800-292-4706 (in-state); 517-373-7660 (out-state)	517-373-1280	2.53
76	Byers Creek trib.	Michigan DNR Fisheries Division	U	U	800-292-4706 (in-state); 517-373-7660 (out-state)	517-373-1280	2.48
77	Indian Creek (Isabella)	Michigan DNR Fisheries Division	U	U	800-292-4706 (in-state); 517-373-7660 (out-state)	517-373-1280	2.42
78	Cold Spring Creek trib.	Michigan DNR Fisheries Division	U	U	800-292-4706 (in-state); 517-373-7660 (out-state)	517-373-1280	2.40
79	Butts Creek trib.	Michigan DNR Fisheries Division	U	U	800-292-4706 (in-state); 517-373-7660 (out-state)	517-373-1280	2.21

80	Indian Creek trib.	Michigan DNR Fisheries Division	U	U	800-292-4706 (in-state); 517-373-7660 (out-state)	517-373-1280	1.96
81	Benjamin Creek	Michigan DNR Fisheries Division	U	U	800-292-4706 (in-state); 517-373-7660 (out-state)	517-373-1280	1.85
82	05-54-0005	Michigan DEQ	215th Ave.	Big Rapids	231-592-0158	517-241-7734	1.76
83	01-54-0048	Michigan DEQ	18 Mile Rd.	Big Rapids	231-592-0158	517-241-7734	1.03
84	01-54-0035	Michigan DEQ	5 Mile Rd.	Morley	231-592-0158	517-241-7734	0.47

Special Designated Areas (Cont'd)

#	Name	City	Category	Waterbody	Location	Comments	Area(acres)
1	Little Muskegon River	U	Designated Trout Stream	Little Muskegon River; Muskegon River	In S central Mecosta County, southeastern Newaygo County, and northwestern Montcalm County.	Stream contains significant populations of trout and/or salmon.	231.20
2	Muskegon River (Mecosta, Osceola)	U	Designated Trout Stream	Muskegon River	In southwestern Osceola County and northwestern Mecosta County.	Stream contains significant populations of trout and/or salmon.	192.74
3	Wetlands Reserve Program	Barryton	Conservation Easement	unnamed stream	30th Ave, between 16 Mile Rd and 17 Mile Rd	<i>No Data</i>	177.57
4	Wetlands Reserve Program	Lakeview	Conservation Easement	none	Jefferson Rd & 117th Ave	<i>No Data</i>	98.49
5	Wetlands Reserve Program	Big Rapids	Conservation Easement	none	Taft Rd & 140th Ave	<i>No Data</i>	82.42
6	Groshon Easement	Morley	Conservation Easement	none	NW of 6 mile Rd & 120th Ave	<i>No Data</i>	60.03
7	E Branch Little Muskegon River	U	Designated Trout Stream	Little Muskegon River, E Branch	In E central Mecosta County.	Stream contains significant populations of trout and/or salmon.	48.42
8	Big Creek trib.	U	Designated Trout Stream	unnamed creek; Big Creek	In southwestern Mecosta County.	Stream contains significant populations of trout and/or salmon.	39.80
9	Roundy Branch trib.	U	Designated Trout Stream	unnamed creek; Roundy Branch	In northeastern Mecosta County.	Stream contains significant populations of trout and/or salmon.	36.47
10	Dye Creek	U	Designated Trout Stream	Dye Creek; Little Muskegon River, E Branch	In E central Mecosta County.	Stream contains significant populations of trout and/or salmon.	34.39
11	Palmer Creek trib.	U	Designated Trout Stream	unnamed creek; Palmer Creek	In northwestern Mecosta County.	Stream contains significant populations of trout and/or salmon.	30.88
12	Wetlands Reserve Program	Barryton	Conservation Easement	none	17 Mile Rd & 45th Ave	<i>No Data</i>	30.44
13	Wetlands Reserve Program	Stanwood	Conservation Easement	none	7 Mile Rd & 155th Ave	<i>No Data</i>	27.75
14	Starks Property	Barryton	Private Nature Preserve	Chippewa River	19 Mile Rd & 10th Ave	<i>No Data</i>	27.64

15	Burden Lake trib.	U	Designated Trout Stream	unnamed creek; Burden Lake	In central Mecosta County.	Stream contains significant populations of trout and/or salmon.	27.04
16	unnamed creek trib.	U	Designated Trout Stream	unnamed creek; Blodgett Creek	In N central Mecosta County.	Stream contains significant populations of trout and/or salmon.	25.62
17	MI-113576	Barryton	Conservation Easement	Chippewa River	19 Mile Rd & 20th Ave	Private	24.11
18	Big Creek (Mecosta)	U	Designated Trout Stream	Big Creek; Little Muskegon River	In southwestern Mecosta County.	Stream contains significant populations of trout and/or salmon.	22.43
19	Dalziel Creek	U	Designated Trout Stream	Dalziel Creek; Muskegon River	In northeastern Newaygo County.	Stream contains significant populations of trout and/or salmon.	22.43
20	99-09-0723	Big Rapids	Conservation Easement	none	Waldron Way & 15 Mile Rd	Private	22.37
21	Blodgett Creek	U	Designated Trout Stream	Blodgett Creek; Muskegon River	In N central Mecosta County.	Stream contains significant populations of trout and/or salmon.	21.33
22	Macks Creek	U	Designated Trout Stream	Macks Creek; Muskegon River	In southwestern Mecosta County.	Stream contains significant populations of trout and/or salmon.	20.58
23	N Branch Chippewa River	U	Designated Trout Stream	Chippewa River, N Branch; Chippewa River	In southeastern Osceola County and southwestern Clare County.	Stream contains significant populations of trout and/or salmon.	20.34
24	Pogy Creek	U	Designated Trout Stream	Pogy Creek,	In N central Mecosta County.	Stream contains significant populations of trout and/or salmon.	18.68
25	06-54-0058	Stanwood	Conservation Easement	Shinglebolt Creek	Located on Tullymore Golf Club	Private	17.04
26	Paris Creek trib.	U	Designated Trout Stream	unnamed creek; Paris Creek	In northeastern Newaygo County and northwestern Mecosta County.	Stream contains significant populations of trout and/or salmon.	16.64
27	Wetlands Reserve Program	Blanchard	Conservation Easement	none	E side of 50th Ave, between 5 Mile Rd and Tyler Rd	<i>No Data</i>	16.52
28	Mitchell Creek (Mecosta)	U	Designated Trout Stream	Mitchell Creek; Muskegon River	In W central Mecosta County.	Stream contains significant populations of trout and/or salmon.	16.43

29	Macks Creek trib.	U	Designated Trout Stream	unnamed creek; Macks Creek	In southwestern Mecosta County.	Stream contains significant populations of trout and/or salmon.	15.68
30	Sylvester Creek (Mecosta)	U	Designated Trout Stream	Sylvester Creek; Little Muskegon River	In southeastern Mecosta County.	Stream contains significant populations of trout and/or salmon.	15.21
31	Paris Creek	U	Designated Trout Stream	Paris Creek; Muskegon River	In southeastern Lake County, northeastern Newaygo County, and northwestern Mecosta County.	Stream contains significant populations of trout and/or salmon.	14.69
32	Gilbert Creek (Mecosta)	U	Designated Trout Stream	Gilbert Creek; Blue Lake; Lake Mecosta	In central Mecosta County.	Stream contains significant populations of trout and/or salmon.	14.27
33	Paris Creek trib.	U	Designated Trout Stream	unnamed creek; Paris Creek	In northwestern Mecosta County.	Stream contains significant populations of trout and/or salmon.	13.77
34	Quigley Creek	U	Designated Trout Stream	Quigley Creek; Little Muskegon River	In southwestern Mecosta County.	Stream contains significant populations of trout and/or salmon.	13.72
35	Schrader Creek	U	Designated Trout Stream	Schrader Creek; Little Muskegon River, E Branch	In E central Mecosta County.	Stream contains significant populations of trout and/or salmon.	13.48
36	Rattail Creek	U	Designated Trout Stream	Rattail Creek; Chippewa River, N Branch	In northeastern Mecosta County.	Stream contains significant populations of trout and/or salmon.	13.47
37	Wetlands Reserve Program	Evart	Conservation Easement	none	Balsam Rd & 90th Ave	<i>No Data</i>	13.25
38	Rosy Run trib.	U	Designated Trout Stream	unnamed creek; Rosy Run	In southwestern Mecosta County.	Stream contains significant populations of trout and/or salmon.	13.14
39	Roundy Branch	U	Designated Trout Stream	Roundy Branch; Big Evans Lake	In northeastern Mecosta County.	Stream contains significant populations of trout and/or salmon.	12.36
40	Cold Spring Creek	U	Designated Trout Stream	Cold Spring Creek; Muskegon River	In W central Mecosta County.	Stream contains significant populations of trout and/or salmon.	12.33
41	Mitchell Creek trib.	U	Designated Trout Stream	unnamed creek; Mitchell Creek	In W central Mecosta County.	Stream contains significant populations of trout and/or salmon.	11.50

42	Betts Creek	U	Designated Trout Stream	Betts Creek; Hardy Dam Pond; Muskegon River	In northeastern Newaygo County and W central Mecosta County.	Stream contains significant populations of trout and/or salmon.	11.27
43	Buckhorn Creek	U	Designated Trout Stream	Buckhorn Creek; Muskegon River	In southeastern Lake County, southwestern Osceola County, and northwestern Mecosta County.	Stream contains significant populations of trout and/or salmon.	10.01
44	Little Muskegon River, E Branch trib.	U	Designated Trout Stream	unnamed creek; Little Muskegon River, E Branch	In E central Mecosta County.	Stream contains significant populations of trout and/or salmon.	9.90
45	Little Muskegon River trib.	U	Designated Trout Stream	unnamed creek; Little Muskegon River	In S central Mecosta County.	Stream contains significant populations of trout and/or salmon.	9.88
46	Blodgett Creek trib.	U	Designated Trout Stream	unnamed creek; Blodgett Creek	In N central Mecosta County.	Stream contains significant populations of trout and/or salmon.	9.28
47	00-54-0053	Big Rapids	Conservation Easement	none	Behind Wal Mart	Private	9.24
48	S Mitchell Creek	U	Designated Trout Stream	S Mitchell Creek; Hardy Dam Pond; Muskegon River	In northeastern Newaygo County and W central Mecosta County.	Stream contains significant populations of trout and/or salmon.	8.99
49	Tamarack Creek	U	Designated Trout Stream	Tamarack Creek; Muskegon River	In southeastern Mecosta County, northwestern Montcalm County, and southeastern Newaygo County.	Stream contains significant populations of trout and/or salmon.	8.73
50	Ladner Creek	U	Designated Trout Stream	Ladner Creek	In W central Mecosta County.	Stream contains significant populations of trout and/or salmon.	8.58
51	Higginson Creek	U	Designated Trout Stream	Higginson Creek; Muskegon River	In W central Mecosta County.	Stream contains significant populations of trout and/or salmon.	7.94
52	Byers Creek	U	Designated Trout Stream	Byers Creek; Muskegon River	In W central Mecosta County.	Stream contains significant populations of trout and/or salmon.	7.92
53	Butts Creek	U	Designated Trout Stream	Butts Creek; Chippewa River, N Branch	In southeastern Osceola County and northeastern Mecosta County.	Stream contains significant populations of trout and/or salmon.	7.50
54	unnamed creek trib.	U	Designated Trout Stream	unnamed creek; Round Lake; Lake Mecosta	In central Mecosta County.	Stream contains significant populations of trout and/or salmon.	7.45

55	Gilbert Creek trib.	U	Designated Trout Stream	unnamed creek; Gilbert Creek	In central Mecosta County.	Stream contains significant populations of trout and/or salmon.	7.27
56	Rattail Creek trib.	U	Designated Trout Stream	unnamed creek; Rattail Creek	In northeastern Mecosta County.	Stream contains significant populations of trout and/or salmon.	7.24
57	Sylvester Creek trib.	U	Designated Trout Stream	unnamed creek; Sylvester Creek	In southeastern Mecosta County.	Stream contains significant populations of trout and/or salmon.	6.92
58	Bennett Creek	U	Designated Trout Stream	Bennett Creek; Hardy Dam Pond; Muskegon River	In E central Newaygo and SW Mecosta County.	Stream contains significant populations of trout and/or salmon.	6.90
59	Decker Creek	U	Designated Trout Stream	Decker Creek	In southeastern Mecosta County and southwestern Isabella County.	Stream contains significant populations of trout and/or salmon.	6.89
60	Shinglebolt Creek trib.	U	Designated Trout Stream	unnamed creek; Shinglebolt Creek	In S central Mecosta County.	Stream contains significant populations of trout and/or salmon.	6.88
61	Shinglebolt Creek	U	Designated Trout Stream	Shinglebolt Creek; Little Muskegon River	In S central Mecosta County.	Stream contains significant populations of trout and/or salmon.	6.66
62	unnamed creek	U	Designated Trout Stream	unnamed creek	In central Mecosta County.	Stream contains significant populations of trout and/or salmon.	6.42
63	Pine River (Isabella)	U	Designated Trout Stream	Pine River	In southwestern Isabella County, northeastern Montcalm County, and northwestern Gratiot County.	Stream contains significant populations of trout and/or salmon.	5.82
64	Muskegon River trib.	U	Designated Trout Stream	unnamed creek; Muskegon River	In northwestern Mecosta County.	Stream contains significant populations of trout and/or salmon.	5.63
65	Quigley Creek trib.	U	Designated Trout Stream	unnamed creek; Quigley Creek	In S central Mecosta County.	Stream contains significant populations of trout and/or salmon.	5.57
66	Pine River trib.	U	Designated Trout Stream	unnamed creek; Pine River	In southeastern Mecosta County.	Stream contains significant populations of trout and/or salmon.	5.40

67	Brown Creek (Mecosta)	U	Designated Trout Stream	Brown Creek; Chippewa River, W Branch	In northeastern Mecosta County.	Stream contains significant populations of trout and/or salmon.	5.23
68	unnamed creek trib.	U	Designated Trout Stream	unnamed creek; Big Creek	In southwestern Mecosta County.	Stream contains significant populations of trout and/or salmon.	5.19
69	Little Muskegon River trib.	U	Designated Trout Stream	unnamed creek; Little Muskegon River	In southwestern Mecosta County and northwestern Montcalm County.	Stream contains significant populations of trout and/or salmon.	5.11
70	Handy Creek	U	Designated Trout Stream	Handy Creek; Little Muskegon River	In S central Mecosta County and northwestern Montcalm County.	Stream contains significant populations of trout and/or salmon.	4.77
71	Schrader Creek trib.	U	Designated Trout Stream	unnamed creek; Schrader Creek	In E central Mecosta County.	Stream contains significant populations of trout and/or salmon.	4.77
72	unnamed creek trib.	U	Designated Trout Stream	unnamed creek; Muskegon River; Rodgers Dam Pond	In southwestern Mecosta County.	Stream contains significant populations of trout and/or salmon.	4.68
73	Haymarsh Creek	U	Designated Trout Stream	Haymarsh Creek; Haymarsh Lake	In N central Mecosta County.	Stream contains significant populations of trout and/or salmon.	4.46
74	Rosy Run	U	Designated Trout Stream	Rosy Run; Hardy Dam Pond; Muskegon River	In southwestern Mecosta County.	Stream contains significant populations of trout and/or salmon.	4.21
75	Jewel Creek	U	Designated Trout Stream	Jewel Creek; Blanchard Millpond	In southeastern Mecosta County and southwestern Isabella County.	Stream contains significant populations of trout and/or salmon.	4.09
76	Sylvester Creek trib.	U	Designated Trout Stream	unnamed creek; Sylvester Creek	In S central Mecosta County.	Stream contains significant populations of trout and/or salmon.	4.09
77	unnamed creek trib.	U	Designated Trout Stream	unnamed creek	In central Mecosta County.	Stream contains significant populations of trout and/or salmon.	4.02
78	Higginson Creek trib.	U	Designated Trout Stream	unnamed creek; Higginson Creek	In W central Mecosta County.	Stream contains significant populations of trout and/or salmon.	3.82
79	unnamed creek trib.	U	Designated Trout Stream	unnamed creek; Mitchell Creek	In northwestern Mecosta County.	Stream contains significant populations of trout and/or salmon.	3.64

80	Muskegon River trib.	U	Designated Trout Stream	unnamed creek; Muskegon River; Rodgers Dam Pond	In southwestern Mecosta County.	Stream contains significant populations of trout and/or salmon.	3.51
81	Dye Creek trib.	U	Designated Trout Stream	unnamed creek; Dye Creek	In E central Mecosta County.	Stream contains significant populations of trout and/or salmon.	3.32
82	unnamed creek trib.	U	Designated Trout Stream	unnamed creek; Muskegon River,	In southwestern Mecosta County.	Stream contains significant populations of trout and/or salmon.	3.20
83	Palmer Creek (Mecosta)	U	Designated Trout Stream	Palmer Creek; Muskegon River	In northwestern Mecosta County.	Stream contains significant populations of trout and/or salmon.	2.77
84	Handy Creek trib.	U	Designated Trout Stream	unnamed creek; Handy Creek	In southwestern Mecosta County and northwestern Montcalm County.	Stream contains significant populations of trout and/or salmon.	2.74
85	Jewel Creek trib.	U	Designated Trout Stream	unnamed creek; Jewel Creek	In southeastern Mecosta County.	Stream contains significant populations of trout and/or salmon.	2.53
86	Byers Creek trib.	U	Designated Trout Stream	unnamed creek; Byers Creek	In W central Mecosta County.	Stream contains significant populations of trout and/or salmon.	2.48
87	Indian Creek (Isabella)	U	Designated Trout Stream	Indian Creek; Lake Isabella	In W central Isabella County and E central Mecosta County.	Stream contains significant populations of trout and/or salmon.	2.42
88	Cold Spring Creek trib.	U	Designated Trout Stream	unnamed creek; Cold Spring Creek	In W central Mecosta County.	Stream contains significant populations of trout and/or salmon.	2.40
89	unnamed creek trib.	U	Designated Trout Stream	unnamed creek; Little Muskegon River	In southwestern Mecosta County and northwestern Montcalm County.	Stream contains significant populations of trout and/or salmon.	2.31
90	unnamed creek trib.	U	Designated Trout Stream	unnamed creek; Roundy Branch	In northeastern Mecosta County.	Stream contains significant populations of trout and/or salmon.	2.21
91	Butts Creek trib.	U	Designated Trout Stream	unnamed creek; Butts Creek	In southeastern Osceola County and northeastern Mecosta County.	Stream contains significant populations of trout and/or salmon.	2.21
92	unnamed creek trib.	U	Designated Trout Stream	unnamed creek; Paris Creek	In northwestern Mecosta County.	Stream contains significant populations of trout and/or salmon.	2.01

93	Indian Creek trib.	U	Designated Trout Stream	unnamed creek; Indian Creek	In W central Isabella County and E central Mecosta County.	Stream contains significant populations of trout and/or salmon.	1.96
94	Benjamin Creek	U	Designated Trout Stream	Benjamin Creek; Chippewa River, N Branch	In southwestern Clare County, southeastern Osceola County, and northeastern Mecosta County.	Stream contains significant populations of trout and/or salmon.	1.85
95	05-54-0005	Big Rapids	Conservation Easement	none	W side of 215th Ave, between 14 and 15 Mile Rds	Private	1.76
96	unnamed creek trib.	U	Designated Trout Stream	unnamed creek; Paris Creek	In northeastern Newaygo County and northwestern Mecosta County.	Stream contains significant populations of trout and/or salmon.	1.66
97	01-54-0048	Big Rapids	Conservation Easement	Mitchell Creek	18 Mile Rd & Newcosta Ave	Private	1.03
98	01-54-0035	Morley	Conservation Easement	none	5 Mile Rd & Medler Dr	Private	0.47

Managed Lands

#	Name	Agency	Address	City	Emergency Phone	Contact Phone	Area(acres)
1	Haymarsh Lake	MI DNR, Wildlife Division	18 Mile Rd.	Rodney; Big Rapids	231-592-0150	231-832-5520	6,597.61
2	Martiny Lake	MI DNR, Wildlife Division	N/A	Mecosta	231-592-0150	231-832-5520	6,312.07
3	Brower Park	Consumers Energy	23056 Polk Rd.	Stanwood	231-592-0150	231-823-2561	3,949.77
4	Manistee	US Forest Service	N/A	N/A	911	800-821-6263	2,252.46
5	White Pine Trail	MI DNR, Parks and Recreation Division	211 W Upton Ave.	Reed City	800-292-4706	517-373-9990	307.66
6	Haymarsh Lake, Paris Unit	MI DNR, Wildlife Division	22250 Northland Dr.	Paris	231-592-0150	231-832-5520	167.61

Managed Lands (Cont'd)

#	Name	City	Category	Waterbody	Location	Comments	Area(acres)
1	Haymarsh Lake	Rodney; Big Rapids	State Game Area	Haymarsh Creek; Haymarsh L.; Youngs L.; Hillsview L.; Cranberry L.; Bergess L.; Ashegun L.; Alma L.	W of Chippewa Lake; between 21 Mile Rd & 18 Mile Rd	http://www.michigan.gov/dnr/publications/pdfs/huntingwildlifehabitat/sga/haymarsh.pdf	6,597.61
2	Martiny Lake	Mecosta	State Game Area	Little Muskegon River, E Branch; Chippewa Creek; Mud L.; Martiny Lake; Halfmoon L.; Diamond L.	N and W of town of Mecosta	http://www.michigan.gov/dnr/publications/pdfs/huntingwildlifehabitat/sga/martinylk.pdf	6,312.07
3	Brower Park	Stanwood	Regional Park	Muskegon River; Laverne Cr.; Ladner Cr.; Hodgers Cr.; Cold Springs Cr.; Betts Cr.; Rogers Dam Pond	N/A	Part of a Consumers Energy hydroelectric dam project and is open to the public	3,949.77
4	Manistee	N/A	National Forest	Lake Michigan; multiple lakes and rivers	NW Lower Peninsula	No Data	2,252.46
5	White Pine Trail	Reed City	State Park	Muskegon River, Grand River	41 miles of open corridor runs from Big Rapids to Cadillac. The Big Rapids to Reed City portion is paved.	No Data	307.66
6	Haymarsh Lake, Paris Unit	Paris	State Game Area	Buckhorn Creek	W side of Muskegon River, S of 23 Mile Rd	No Data	167.61

Threatened and Endangered Species

#	Species	Status	Habitat	Area(acres)
1	Northern long-eared bat	Threatened	Hibernates in caves and mines - swarming in surrounding wooded areas in autumn. Roosts and forages in upland forests during spring and summer.	365,564.31
2	Karner blue butterfly	Endangered	Pine barrens and oak savannas on sandy soils and containing wild lupines (<i>Lupinus perennis</i>), the only known food plant of larvae.	365,564.31

Aboveground Storage Tanks

#	Name	Address	City	Emergency Phone	Contact Phone	Waterbody	Count
1	Remus Warehouse	2401 9 Mile Rd.	Remus	231-592-0158	989-967-8670	none	1

Aboveground Storage Tanks (Cont'd)

#	Name	City	Products	Oil Volume	Oil Tanks	Comments	Count
1	Remus Warehouse	Remus	K-1; PD; FLO	50000	3	91084055	1

Hazardous Materials Storage

#	Name	Address	City	Emergency Phone	Emergency Contact	Local Contact	Count
1	Leprino Foods Co. - Remus	311 N Sheridan	Remus	989-967-3635	Janeen Cochi, Plant Manager	James Buttleman; 231-592-0158	1
2	Fluid Routing Solutions	600 Dekraft St	Big Rapids	231-796-2691	Brian Reeves, Operations Manager	James Buttleman; 231-592-0158	1
3	Ice Mountain Natural Spring Water	19275 Eight Mile Rd	Stanwood	231-823-8382	Steve LaBarge, Safety/Environmental Manager	James Buttleman; 231-592-0158	1

Hazardous Materials Storage (Cont'd)

#	Name	City	Contact Phone	Materials/CAS	Count
1	Leprino Foods Co. - Remus	Remus	989-967-3635	7664417; 7697372	1
2	Fluid Routing Solutions	Big Rapids	231-796-2691	7664939	1
3	Ice Mountain Natural Spring Water	Stanwood	231-823-8100	7664939; 7697372	1

Risk Management Plan (RMP) Facilities

#	Name	Address	City	Facility Registry Service Report	Count
1	LEPRINO FOODS COMPANY - REMUS MI. PLANT	311 N. SHERIDAN	REMUS	https://ofmpub.epa.gov/frs_public2/fii_query_detail_disp_program_facility?p_registry_id=110000410207	1

EPLAN/Tier II Facilities

#	Name	Address	City	Facility Registry Service Report	Count
1	SPEEDWAY LLC	19246 NORTHLAND DR	BIG RAPIDS	https://ofmpub.epa.gov/frs_public2/fii_query_detail_disp_program_facility?p_registry_id=110003639545	1
2	AT&T - M43110	121 MAPLE ST	BIG RAPIDS	https://ofmpub.epa.gov/frs_public2/fii_query_detail_disp_program_facility?p_registry_id=110061809592	1
3	PROGAS PROPANE - BARRYTON	22124 30TH AVE	BARRYTON	https://ofmpub.epa.gov/frs_public2/fii_query_detail_disp_program_facility?p_registry_id=110061902534	1
4	WOOLFOLK REGULATOR STATION	11055 150TH AVE.	BIG RAPIDS	https://ofmpub.epa.gov/frs_public2/fii_query_detail_disp_program_facility?p_registry_id=110061968170	1
5	PROGAS PROPANE - BIG RAPIDS	14990 220TH AVENUE	BIG RAPIDS	https://ofmpub.epa.gov/frs_public2/fii_query_detail_disp_program_facility?p_registry_id=110062102567	1
6	ICE MOUNTAIN NATURAL SPRING WATER	19275 EIGHT MILE RD	STANWOOD	https://ofmpub.epa.gov/frs_public2/fii_query_detail_disp_program_facility?p_registry_id=110061832352	1
7	MEIJER #203 GAS STATION	15375 WALDRON WAY	BIG RAPIDS	https://ofmpub.epa.gov/frs_public2/fii_query_detail_disp_program_facility?p_registry_id=110062058874	1
8	ANR PIPELINE CO - WOOLFOLK COMPRESSOR STATION	11039 150TH AVE.	BIG RAPIDS	https://ofmpub.epa.gov/frs_public2/fii_query_detail_disp_program_facility?p_registry_id=110040962303	1
9	BEDFORD FARM SUPPLY, L.L.C.	5425 120TH AVE	MORLEY	https://ofmpub.epa.gov/frs_public2/fii_query_detail_disp_program_facility?p_registry_id=110013759469	1
10	AT&T - M43160	160 4TH STREET	MORLEY	https://ofmpub.epa.gov/frs_public2/fii_query_detail_disp_program_facility?p_registry_id=110061967910	1
11	BLANCHARD	3681 COSTABELLA AVE	BLANCHARD	https://ofmpub.epa.gov/frs_public2/fii_query_detail_disp_program_facility?p_registry_id=110056534870	1
12	HANCHETT MFG DIV	906 N STATE ST	BIG RAPIDS	https://ofmpub.epa.gov/frs_public2/fii_query_detail_disp_program_facility?p_registry_id=110003583220	1

13	AMERIGAS- UNIVERSITY CLUB	13401 215TH ROAD	BIG RAPIDS	https://ofmpub.epa.gov/frs_public2/fii_query_detail_disp_program_facility?p_registry_id=110061925109	1
14	BIG RAPIDS FIELD OFFCE	609 BJORNSON STREET	BIG RAPIDS	https://ofmpub.epa.gov/frs_public2/fii_query_detail_disp_program_facility?p_registry_id=110062029521	1
15	GREEN CPF (REHKOPF 1-21)	SEC 17-16N-10W	PARIS	https://ofmpub.epa.gov/frs_public2/fii_query_detail_disp_program_facility?p_registry_id=110061966813	1
16	WOLVERINE WORLD WIDE INC FACTORY B	1005 BALDWIN	BIG RAPIDS	https://ofmpub.epa.gov/frs_public2/fii_query_detail_disp_program_facility?p_registry_id=110000410172	1
17	U.S. MARBLE, INC.	7389 COSTABELLA RD	REMUS	https://ofmpub.epa.gov/frs_public2/fii_query_detail_disp_program_facility?p_registry_id=110054256880	1
18	LEPRINO FOODS COMPANY - REMUS MI. PLANT	311 N. SHERIDAN	REMUS	https://ofmpub.epa.gov/frs_public2/fii_query_detail_disp_program_facility?p_registry_id=110000410207	1
19	LOWE'S OF BIG RAPIDS, MI (#2532)	21555 PERRY AVENUE	BIG RAPIDS	https://ofmpub.epa.gov/frs_public2/fii_query_detail_disp_program_facility?p_registry_id=110061996176	1
20	HOLTON'S LP GAS COMPANY	9963 30TH AVENUE	REMUS	https://ofmpub.epa.gov/frs_public2/fii_query_detail_disp_program_facility?p_registry_id=110062033053	1
21	AMERIGAS-MECOSTA	6614 9 MILE ROAD	MECOSTA	https://ofmpub.epa.gov/frs_public2/fii_query_detail_disp_program_facility?p_registry_id=110061933289	1
22	FLUID ROUTING SOLUTIONS	600 DEKRAFT ST	BIG RAPIDS	https://ofmpub.epa.gov/frs_public2/fii_query_detail_disp_program_facility?p_registry_id=110058105054	1
23	COLDWATER DEHYDRATION STATION	COLEMAN RD 1/2 MILE E OF SHERMAN RD	BARRYTON	https://ofmpub.epa.gov/frs_public2/fii_query_detail_disp_program_facility?p_registry_id=110062051327	1
24	FERRELLGAS	10029 30TH AVE (M-66)	REMUS	https://ofmpub.epa.gov/frs_public2/fii_query_detail_disp_program_facility?p_registry_id=110061892322	1
25	SIMONDS INTERNATIONAL CORP	120 E PERE MARQUETTE ST	BIG RAPIDS	https://ofmpub.epa.gov/frs_public2/fii_query_detail_disp_program_facility?p_registry_id=110000410163	1

26	SCOTLAND OIL COMPANY	2401 9-MILE ROAD	REMUS	https://ofmpub.epa.gov/frs_public2/fii_query_detail_disp_program_facility?p_registry_id=110037085908	1
27	HOLTON'S LP GAS CO-BIG RAPIDS	11125 NORTHLAND DRIVE	BIG RAPIDS	https://ofmpub.epa.gov/frs_public2/fii_query_detail_disp_program_facility?p_registry_id=110061852240	1
28	MI KMA SECONDARY HUB SITE	512 NORTH CASS STREET	MORLEY	https://ofmpub.epa.gov/frs_public2/fii_query_detail_disp_program_facility?p_registry_id=110061925403	1
29	BIG RAPIDS OPERATIONS	20251 EAST 19 MILE RD	BIG RAPIDS	https://ofmpub.epa.gov/frs_public2/fii_query_detail_disp_program_facility?p_registry_id=110061978481	1

Oil and Natural Gas Pipelines

#	Name	System	Description	Length(mi)
1	ANR Pipeline Co.	Transmission	Natural Gas Pipeline	109.69
2	Michigan Consolidated Gas Co.	Central	Natural Gas Pipeline	82.83
3	ANR Pipeline Co.	Gathering	Natural Gas Pipeline	30.48
4	Michigan Consolidated Gas Co.	Taggart Gathering	Natural Gas Pipeline	18.68
5	Michigan Consolidated Gas Co.	South East	Natural Gas Pipeline	17.06
6	Michigan Consolidated Gas Co.	Distribution Operated	Natural Gas Pipeline	7.58
7	Michigan Consolidated Gas Co.	<i>No Data</i>	Natural Gas Pipeline	7.16
8	Michigan Consolidated Gas Co.	Southeast	Natural Gas Pipeline	1.26

Marinas

#	Name	Address	City	Emergency Phone	Contact Phone	Waterbody	Count
1	Shooltz's Landing	16621 65th Ave.	Mecosta	231-592-0150	231-382-5596	Boom Lake, Bass Lake, Tubbs Lake Access	1
2	Muskegon River Boat Club	7260 230th Ave.	Stanwood	231-724-6236	231-796-0717 weekdays, 231-796-8154 weekends	Muskegon River	1
3	River Ridge Landing	22265 8 Mile Rd.	Stanwood	616-262-1139	231-823-2624	Muskegon River, Hardy Dam Pond Access	1

Boat Access

#	Name	Operator	Waterbody	Latitude	Longitude	Count
1	Tubbs Island Sfcg	TBD	Martiny Lake	43.714500000700355	-85.20889999996871	1
2	Tubbs Lake Sfcg	TBD	Martiny Lake	43.71110000088811	-85.2011000001803	1
3	Alma Lake	Clare FO	Alma Lake	43.73640000075102	-85.414800000377	1
4	Brockway	Flat River FO	Brockway Lake	43.499399999156594	-85.29430000018328	1
5	Former Rustford Pond	Flat River FO	Little Muskegon River	43.516400000080466	-85.3289999999106	1
6	Paris County Park	Baldwin FO	Muskegon River	43.78749999962747	-85.49949999991804	1
7	Brower Park Marina	Baldwin FO	Hardy Dam Pond/Muskegon River	43.55959999933839	-85.54899999964982	1
8	131 Bridge	Flat River FO	Muskegon River	43.60869999974966	-85.49349999986589	1
9	Rogers Pond	Flat River FO	Rogers Pond	43.6230999995023	-85.4731000000611	1
10	River Bend Bluffs	Flat River FO	Muskegon River	43.642100000754	-85.44280000030994	1
11	Big Evans	Clare FO	Martiny Lake	43.72969999909401	-85.22549999970943	1
12	Winchester Dam	Clare FO	Martiny Lake	43.7179000005126	-85.18250000011176	1
13	Pretty Lake	Clare FO	Pretty Lake	43.69239999912679	-85.2370999995619	1
14	Jehnsen Lake	Clare FO	Jehnsen Lake	43.70399999991059	-85.26589999999851	1
15	Lower Evans	Clare FO	Martiny Lake	43.7140999995172	-85.24309999961406	1
16	Chippewa Lake	Clare FO	Chippewa Lake	43.7613999992609	-85.28440000023693	1
17	Hillsview Lake	Clare FO	Hillsview Lake	43.71250000037253	-85.36840000003576	1
18	Bergess Lake	Clare FO	Bergess Lake	43.73230000026524	-85.4035000000149	1
19	Townline Lake	Clare FO	Townline Lake	43.72110000066459	-85.43859999999404	1
20	Clear Lake	Clare FO	Clear Lake	43.67549999989569	-85.39279999956489	1
21	Lake Mecosta	Clare FO	Lake Mecosta	43.59999999962747	-85.29449999984354	1
22	Haymarsh Lake Flooding	Haymarch Lake SGA	Haymarsh Lake Flooding	43.74789999984205	-85.35410000011325	1

Non-navigational Dams

#	Name	Latitude	Longitude	Count
1	Upper Canadian Lakes Dam	43.5899999985099	-85.32330000028014	1
2	Lower Dead Stream Dam	43.630000000819564	-85.29640000034124	1
3	Featherbed Dam	43.76170000061393	-85.37999999988824	1
4	Georgia John Farms Dam	43.716700000688434	-85.11670000012964	1
5	Lower Canadian Lakes Dam	43.57330000028014	-85.3066999996081	1
6	Upper Canadian Lakes Golf Course Dam	43.56169999949634	-85.27500000037253	1
7	Little John Flooding Dam	43.7367000002414	-85.40330000035465	1
8	Ray C Andres Dam	43.74169999919832	-85.51669999957085	1
9	Buckhorn Creek Dam	43.79329999908805	-85.5	1
10	ROGERS	43.61329999938607	-85.47829999960959	1
11	Winchester Dam	43.72000000067055	-85.1832999996841	1
12	Barryton Dam	43.74670000001788	-85.14670000039041	1
13	Lower Canadian Lakes Golf Course Dam	43.56169999949634	-85.28330000024289	1
14	Baumunk Dam	43.66669999943376	-85.50329999998212	1
15	Haymarsh Lake Dam	43.74670000001788	-85.34999999962747	1
16	Pickerel Lake Dam	43.74169999919832	-85.3633000003174	1

Rivers and Streams

#	Name	Feature	Length(mi)
1	Muskegon River	Stream	31.24
2	Little Muskegon River	Stream	27.88
3	<i>No Data</i>	Stream	15.85
4	North Branch Chippewa River	Stream	5.90
5	Chippewa River	Stream	5.54
6	West Branch Chippewa River	Artificial Path	4.97
7	Pine River	Stream	4.36
8	Muskegon River	Artificial Path	3.66
9	West Branch Chippewa River	Stream	3.63
10	West Branch Chippewa River	Stream Intermittent	3.38
11	<i>No Data</i>	Stream Intermittent	3.11
12	Pony Creek	Stream Intermittent	2.81
13	Little Muskegon River	Stream Intermittent	2.23
14	Tamarack Creek	Stream	2.01
15	<i>No Data</i>	Artificial Path	1.50
16	Tamarack Creek	Stream Intermittent	1.01
17	Townline Creek	Stream Intermittent	0.91

Lakes and Ponds

#	Name	Description	Area(acres)
1	No Data	Lake/Pond: Hydrographic Category = Perennial	3,408.94
2	Chippewa Lake	Lake/Pond: Hydrographic Category = Perennial	770.37
3	No Data	Lake/Pond: Hydrographic Category = Perennial; Stage = Average Wat	588.82
4	Horsehead Lake	Lake/Pond: Hydrographic Category = Perennial	386.70
5	Haymarsh Lakes	Lake/Pond: Hydrographic Category = Perennial	277.51
6	Jehnsen Lake	Lake/Pond: Hydrographic Category = Perennial	269.74
7	Canadian Lakes	Lake/Pond: Hydrographic Category = Perennial	240.91
8	Blue Lake	Lake/Pond: Hydrographic Category = Perennial	219.05
9	Clear Lake	Lake/Pond: Hydrographic Category = Perennial	136.31
10	Youngs Lake	Lake/Pond: Hydrographic Category = Perennial	128.35
11	School Section Lake	Lake/Pond: Hydrographic Category = Perennial	116.03
12	Pretty Lake	Lake/Pond: Hydrographic Category = Perennial	114.89
13	Hillsview Lake	Lake/Pond: Hydrographic Category = Perennial	111.74
14	Pogy Lake	Lake/Pond: Hydrographic Category = Perennial	88.45
15	Diamond Lake	Lake/Pond: Hydrographic Category = Perennial	85.88
16	Merrill Lake	Lake/Pond: Hydrographic Category = Perennial	85.71
17	Townline Lake	Lake/Pond: Hydrographic Category = Perennial	73.62
18	Morley Pond	Lake/Pond: Hydrographic Category = Perennial	70.72
19	Bergess Lake	Lake/Pond: Hydrographic Category = Perennial	58.95
20	Long Lake	Lake/Pond: Hydrographic Category = Perennial	55.20
21	Brady Lake	Lake/Pond: Hydrographic Category = Perennial	49.38
22	Twentyeight, Lake	Lake/Pond: Hydrographic Category = Perennial	47.78
23	Mud Lake	Lake/Pond: Hydrographic Category = Perennial	46.51
24	Hodges Lake	Lake/Pond: Hydrographic Category = Perennial	46.11
25	Pine Lake	Lake/Pond: Hydrographic Category = Perennial	37.41
26	Jacks Lake	Lake/Pond: Hydrographic Category = Perennial	28.97
27	Gorrel Lake	Lake/Pond: Hydrographic Category = Perennial	28.71

28	Hannah Lake	Lake/Pond: Hydrographic Category = Perennial	28.65
29	<i>No Data</i>	Lake/Pond: Hydrographic Category = Intermittent	27.57
30	Miramichi Lake	Lake/Pond: Hydrographic Category = Perennial	26.23
31	Halfmoon Lake	Lake/Pond: Hydrographic Category = Perennial	26.12
32	Big John Brown Lake	Lake/Pond: Hydrographic Category = Perennial	24.13
33	Black Lakes	Lake/Pond: Hydrographic Category = Perennial	24.04
34	Cook Lake	Lake/Pond: Hydrographic Category = Perennial	23.91
35	Six, Lake	Lake/Pond: Hydrographic Category = Perennial	23.27
36	Moiles Lake	Lake/Pond: Hydrographic Category = Perennial	21.17
37	Burden Lake	Lake/Pond: Hydrographic Category = Perennial	19.74
38	Perch Lake	Lake/Pond: Hydrographic Category = Perennial	19.29
39	Elm Lake	Lake/Pond: Hydrographic Category = Perennial	18.92
40	Bevens Lake	Lake/Pond: Hydrographic Category = Perennial	18.00
41	Stony Lake	Lake/Pond: Hydrographic Category = Perennial	17.45
42	Pickereel Lake	Lake/Pond: Hydrographic Category = Perennial	16.89
43	Alma Lake	Lake/Pond: Hydrographic Category = Perennial	15.78
44	Blanchard Lake	Lake/Pond: Hydrographic Category = Perennial	15.54
45	Hills Lake	Lake/Pond: Hydrographic Category = Perennial	14.76
46	House Lake	Lake/Pond: Hydrographic Category = Perennial	13.21
47	Cranberry Lake	Lake/Pond: Hydrographic Category = Perennial	13.20
48	Colby Lake	Lake/Pond: Hydrographic Category = Perennial	13.07
49	Town Line Lake	Lake/Pond: Hydrographic Category = Perennial	12.42
50	Brockway Lake	Lake/Pond: Hydrographic Category = Perennial	12.33
51	Emerald Lake	Lake/Pond: Hydrographic Category = Perennial	12.32
52	Spring Lake	Lake/Pond: Hydrographic Category = Perennial	12.00
53	Bluegill Lake	Lake/Pond: Hydrographic Category = Perennial	11.74
54	Lifter Lake	Lake/Pond: Hydrographic Category = Perennial	10.99

55	Gooseneck Pond	Lake/Pond: Hydrographic Category = Perennial	10.82
56	Anderson Lake	Lake/Pond: Hydrographic Category = Perennial	10.06
57	Dye Lake	Lake/Pond: Hydrographic Category = Perennial	9.25
58	Browns Lake	Lake/Pond: Hydrographic Category = Perennial	8.96
59	Nehmer Lake	Lake/Pond: Hydrographic Category = Perennial	7.99
60	Meeker Lake	Lake/Pond: Hydrographic Category = Perennial	7.67
61	Doyle Lake	Lake/Pond: Hydrographic Category = Perennial	7.55
62	Hunt Lake	Lake/Pond: Hydrographic Category = Perennial	7.50
63	Harris Lake	Lake/Pond: Hydrographic Category = Perennial	7.27
64	Thompson Lake	Lake/Pond: Hydrographic Category = Perennial	7.01
65	Indian Lake	Lake/Pond: Hydrographic Category = Perennial	6.99
66	Ashegun Lake	Lake/Pond: Hydrographic Category = Perennial	6.86
67	Bullhead Lake	Lake/Pond: Hydrographic Category = Perennial	6.66
68	Third Lake	Lake/Pond: Hydrographic Category = Perennial	6.12
69	Wilson Lake	Lake/Pond: Hydrographic Category = Perennial	5.59
70	Van Alstin Lake	Lake/Pond: Hydrographic Category = Perennial	5.43
71	Granger Lake	Lake/Pond: Hydrographic Category = Perennial	5.35
72	Rattail Lakes	Lake/Pond: Hydrographic Category = Perennial	5.17
73	Round Lake	Lake/Pond: Hydrographic Category = Perennial	4.62
74	Fourth Lake	Lake/Pond: Hydrographic Category = Perennial	4.21
75	Rose Lake	Lake/Pond: Hydrographic Category = Perennial	4.12
76	Nijode Lakes	Lake/Pond: Hydrographic Category = Perennial	3.36
77	Spring Lakes	Lake/Pond: Hydrographic Category = Perennial	3.27
78	Lassen Lake	Lake/Pond: Hydrographic Category = Perennial	3.22
79	Hartman Lake	Lake/Pond: Hydrographic Category = Perennial	2.97