

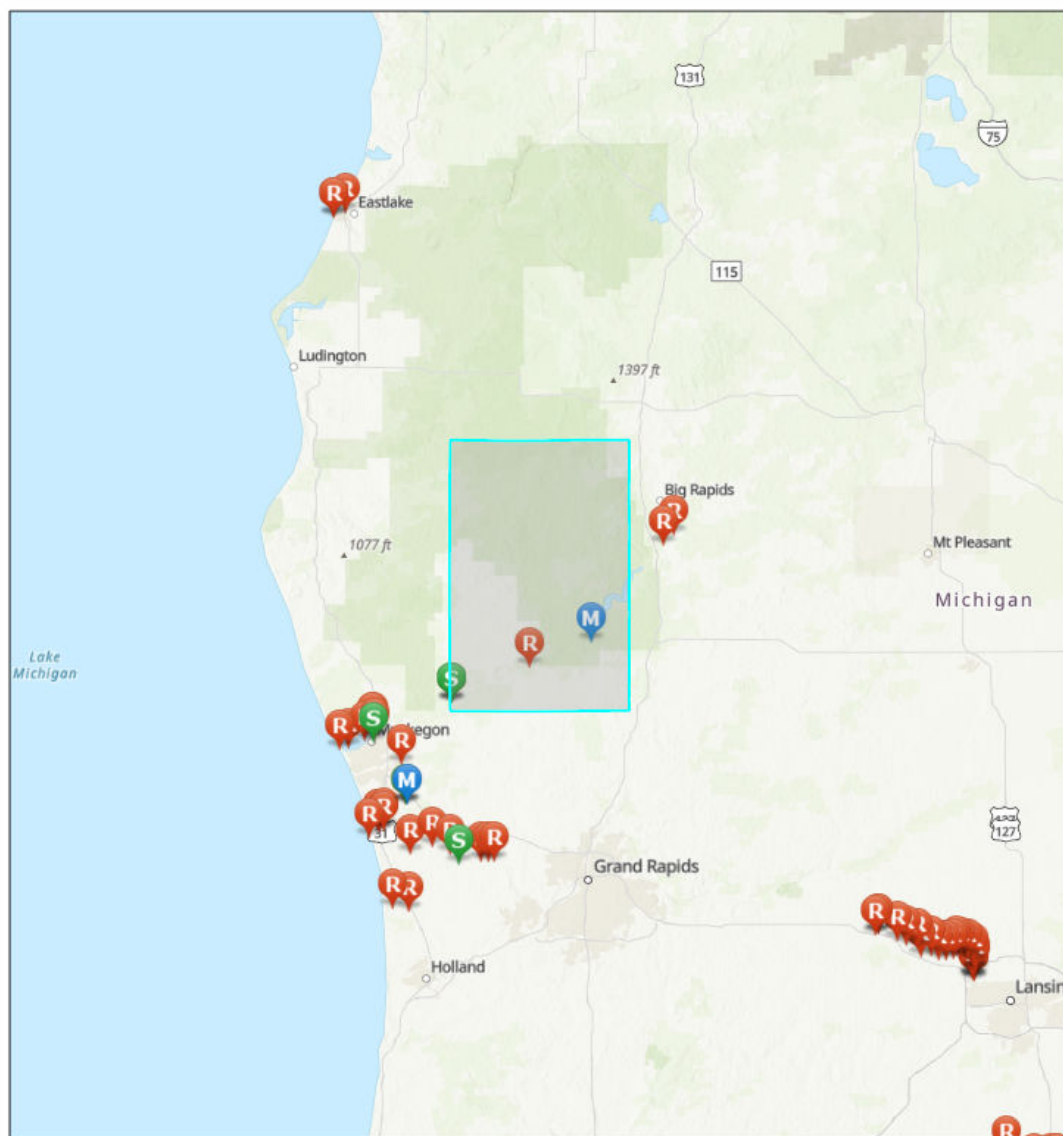


County Fact Sheet Report

Area of Interest (AOI) Information

Area : 551,480.89 acres

Sep 3 2020 14:51:59 Eastern Daylight Time



GRP Response Strategy Survey



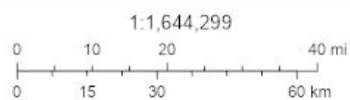
Response Data Sheet



Staging Area Only Data Sheet



Monitoring Data Sheet



Sources: Esri, Airbus DS, USGS, NGA, NASA, CGIAR, N Robinson, NCEAS, NLS, OS, NMA, Geodatastijnsen, Rijkswaterstaat, GSA, Geoland, FEMA, Intermap and the GIS user community, Sources: Esri, HERE, Garmin, FAO, NOAA, USGS, © OpenStreetMap contributors, and the GIS User Community, Upper Mississippi River Basin Association, Great Lakes Commission, USEPA

Newaygo County, Michigan

Summary

Name	Count	Area(acres)	Length(mi)
Local EOC	1	N/A	N/A
Public Health Departments	0	N/A	N/A
County Contacts	1	551,480.89	N/A
State Contacts	1	551,480.89	N/A
Major Cities and Towns	5	N/A	N/A
Tribal Lands	0	0	N/A
Tribal Lands (Cont'd)	0	0	N/A
Hospitals	1	N/A	N/A
Hospitals (Cont'd)	1	N/A	N/A
Urgent Care Facilities	0	N/A	N/A
Water Intakes	0	N/A	N/A
Water Intakes (Cont'd)	0	N/A	N/A
Wastewater Treatment Facilities	4	N/A	N/A
Special Designated Areas	203	8,538.11	N/A
Special Designated Areas (Cont'd)	203	8,538.11	N/A
Managed Lands	5	32,332.31	N/A
Managed Lands (Cont'd)	5	32,332.31	N/A
Other Environmentally Sensitive Areas	0	0	N/A
Other Environmentally Sensitive Areas (Cont'd)	0	0	N/A
Historic Places	0	N/A	N/A
Archaeological Sites	0	0	N/A
Threatened and Endangered Species	3	1,654,442.67	N/A
Aboveground Storage Tanks	0	N/A	N/A
Aboveground Storage Tanks (Cont'd)	0	N/A	N/A
Hazardous Materials Storage	7	N/A	N/A
Hazardous Materials Storage (Cont'd)	7	N/A	N/A
Facility Response Plan (FRP) Facilities	0	N/A	N/A
Risk Management Plan (RMP) Facilities	2	N/A	N/A
EPLAN/Tier II Facilities	39	N/A	N/A
Railroads	3	N/A	46.14
Petroleum Pipelines	0	N/A	0
Oil and Natural Gas Pipelines	140	N/A	137.30
Marinas	3	N/A	N/A
Boat Access	25	N/A	N/A
Navigational Locks and Dams	0	N/A	N/A
Non-navigational Dams	10	N/A	N/A
Rivers and Streams	35	N/A	196.35

Lakes and Ponds	181	10,742.84	N/A
Response Strategies	0	N/A	N/A
Response Strategies (Cont'd)	0	N/A	N/A
Response Strategies (Cont'd)	0	N/A	N/A

Local EOC

#	Name	Address	City	Phone	Has Generator	Directions	Count
1	NEWAYGO COUNTY EMERGENCY OPERATIONS CENTER	1018 EAST NEWELL STREET	WHITE CLOUD	231-689-9354	No Data	No Data	1

County Contacts

#	County	Point of Contact	Emergency Management Phone	LEPC Chair	LEPC Phone	Local Health Department Phone	Area(acres)
1	Newaygo, Michigan	Abigail Watkins	231-689-7354	Abigail Watkins	231-689-7354	231-873-2193	551,480.89

State Contacts

#	State Emergency Management Phone	24-hr Emergency Management Phone	State Health Department Phone	Homeland Security	Area(acres)
1	517-284-3946	800-292-4706	517-335-9030	313-596-2590	551,480.89

Major Cities and Towns

#	Name	Population	Elevation (Feet)	Count
1	White Cloud	1408	873	1
2	Newaygo	1976	692	1
3	Fremont	4081	817	1
4	Grant	894	833	1
5	Hesperia	954	745	1

Hospitals

#	Name	Address	City	Phone	Type	Status	Count
1	SPECTRUM HEALTH GERBER MEMORIAL	212 S SULLIVAN ST	FREMONT	NOT AVAILABLE	GENERAL ACUTE CARE	OPEN	1

Hospitals (Cont'd)

#	Name	City	Trauma Level	Helipad	Number of Beds	Owner	Count
1	SPECTRUM HEALTH GERBER MEMORIAL	FREMONT	NOT AVAILABLE	N	25	NON-PROFIT	1

Wastewater Treatment Facilities

#	Name	Address	City	Waterbody	Count
1	NEWAYGO WWTP	8233 SOUTH MUNDY	NEWAYGO	MUSKEGON RIVER	2
2	GRANT WWTP	341 JONES	GRANT	FELLOWS DRAIN	2

Special Designated Areas

#	Name	Agency	Address	City	Emergency Phone	Phone	Area(acres)
1	Newaygo Prairies-Steelcase	US Forest Service	State Hwy 37	Bitely/White Cloud	231-689-7303	610-557-4017	1,029.51
2	Muskegon River (Muskegon)	Michigan DNR Fisheries Division	U	U	800-292-4706 (in-state); 517-373-7660 (out-state)	517-373-1280	990.58
3	Wetlands Reserve Program	Natural Resources Conservation Service	Harrison Rd.	Walkerville	231-873-4473; 231-689-7354	616-942-4111	664.05
4	Ore-Ida Prairie	The Nature Conservancy	E 58th St.	Newaygo	231-689-7303	517-316-0300	377.48
5	S Branch White River	Michigan DNR Forest Management Division	U	U	800-292-4706 (in-state); 517-373-7660 (out-state)	517-335-3441, Natural Rivers Specialist	345.71
6	Great Lakes Fishery Trust	Great Lakes Fishery	N/A	Newaygo	231-689-7303	517-371-7468	293.45
7	CE-LCWM	Land Conservancy of West Michigan	S Wisner Ave.	White Cloud	231-689-7354	616-451-9476	289.62
8	Wetlands Reserve Program	Natural Resources Conservation Service	12 Mile Rd.	Paris	231-689-7354	616-942-4111	229.49
9	Loda Lake National Wildlife Sanctuary	Michigan Garden Clubs	6 Mile Rd.	White Cloud	231-689-7303	231-796-6132	228.12
10	CE-LCWM	Land Conservancy of West Michigan	Hazlewood Ave.	Newaygo	231-689-7354	616-451-9476	188.78
11	Newaygo Prairies Early RNA	US Forest Service	Poplar Ave.	Newaygo	231-689-7303	610-557-4017	184.15
12	Wetlands Reserve Program	Natural Resources Conservation Service	Centerline	Bitely	231-689-7354	616-942-4111	165.90
13	Sheridan Township Forest	Sheridan Township	W 88th St.	Fremont	231-689-7354	231-924-2566	165.82
14	CE-LCWM	Land Conservancy of West Michigan	E 72nd St.	Newaygo	231-689-7354	616-451-9476	163.52
15	CE-LCWM	Land Conservancy of West Michigan	13 Mile Rd.	Bitely	231-689-7354	616-451-9476	157.87
16	CE-LCWM	Land Conservancy of West Michigan	N Walnut Ave.	Bitely	231-689-7354	616-451-9476	155.48
17	Wetlands Reserve Program	Natural Resources Conservation Service	Spruce Ave.	White Cloud	231-689-7354	616-942-4111	152.40
18	Chain of Lakes	Michigan DNR Fisheries Division	U	U	800-292-4706 (in-state); 517-373-7660 (out-state)	517-373-1280	117.40

19	Newaygo Prairie	Michigan Nature Association	S Poplar Ave.	Newaygo	231-689-7303	517-655-5655	109.15
20	Wetlands Reserve Program	Natural Resources Conservation Service	136th St.	Grant	231-689-7354	616-942-4111	98.66
21	CE-LCWM	Land Conservancy of West Michigan	Pine Ave.	Bitely	231-689-7354	616-451-9476	98.24
22	Karner Blue	Michigan Nature Association	Spruce Ave. & Croton Dr.	Newaygo	231-689-7303	517-655-5655	81.06
23	CE-LCWM	Land Conservancy of West Michigan	Spruce Ave.	Newaygo	231-689-7354	616-451-9476	70.59
24	Wetlands Reserve Program	Natural Resources Conservation Service	Spring Dr.	Newaygo	231-689-7354	616-942-4111	64.37
25	Wetlands Reserve Program	Natural Resources Conservation Service	E 136th St.	Grant	231-689-7354	616-942-4111	59.71
26	unnamed creek trib.	Michigan DNR Fisheries Division	U	U	800-292-4706 (in-state); 517-373-7660 (out-state)	517-373-1280	56.89
27	Wetlands Reserve Program	Natural Resources Conservation Service	Luce Ave.	Fremont	231-689-7354	616-942-4111	54.71
28	Martin Creek (MI)	Michigan DNR Fisheries Division	U	U	800-292-4706 (in-state); 517-373-7660 (out-state)	517-373-1280	52.79
29	Wetlands Reserve Program	Natural Resources Conservation Service	Wisner Ave.	Grant	231-689-7354	616-942-4111	52.19
30	Wetlands Reserve Program	Natural Resources Conservation Service	W 74th St.	Fremont	231-689-7354	616-942-4111	50.62
31	Mena Creek	Michigan DNR Fisheries Division	U	U	800-292-4706 (in-state); 517-373-7660 (out-state)	517-373-1280	50.53
32	Wetlands Reserve Program	Natural Resources Conservation Service	W 16th St.	Fremont	231-689-7354	616-942-4111	49.28
33	Tank Creek (Newaygo)	Michigan DNR Fisheries Division	U	U	800-292-4706 (in-state); 517-373-7660 (out-state)	517-373-1280	48.59
34	CE-LCWM	Land Conservancy of West Michigan	S Parson Ave.	Newaygo	231-689-7354	616-451-9476	47.71
35	Brooks Creek (Sheridan Twp.)	Michigan DNR Fisheries Division	U	U	800-292-4706 (in-state); 517-373-7660 (out-state)	517-373-1280	47.59

36	CE-LCWM	Land Conservancy of West Michigan	W 90th St.	Newaygo	231-689-7354	616-451-9476	47.30
37	Little S Branch Pere Marquette River	Michigan DNR Fisheries Division	U	U	800-292-4706 (in-state); 517-373-7660 (out-state)	517-373-1280	45.84
38	Wetlands Reserve Program	Natural Resources Conservation Service	104th St.	Howard	231-689-7354	616-942-4111	44.10
39	Big S Branch Pere Marquette River	Michigan DNR Fisheries Division	U	U	800-292-4706 (in-state); 517-373-7660 (out-state)	517-373-1280	43.28
40	Newaygo Prairies Fee	The Nature Conservancy	E 58th St.	Newaygo	231-689-7303	517-316-0300	39.96
41	Bigelow Creek trib.	Michigan DNR Fisheries Division	U	U	800-292-4706 (in-state); 517-373-7660 (out-state)	517-373-1280	37.80
42	Wetlands Reserve Program	Natural Resources Conservation Service	E 112th St.	Grant	231-689-7354	616-942-4111	37.33
43	Sailors Virgin Pine Forest	James Sailors	52nd St.	Newaygo	231-689-7303	N/A	34.94
44	Bigelow Creek	Michigan DNR Fisheries Division	U	U	800-292-4706 (in-state); 517-373-7660 (out-state)	517-373-1280	33.95
45	Paris Creek trib.	Michigan DNR Fisheries Division	U	U	800-292-4706 (in-state); 517-373-7660 (out-state)	517-373-1280	32.85
46	Wetlands Reserve Program	Natural Resources Conservation Service	Grant St.	Walkerville	231-689-7354	616-942-4111	32.84
47	Wetlands Reserve Program	Natural Resources Conservation Service	W 40th St.	Fremont	231-689-7354	616-942-4111	32.46
48	Ewing Creek	Michigan DNR Fisheries Division	U	U	800-292-4706 (in-state); 517-373-7660 (out-state)	517-373-1280	32.33
49	S Branch White River	Michigan DNR Fisheries Division	U	U	800-292-4706 (in-state); 517-373-7660 (out-state)	517-373-1280	31.78
50	Cedar Creek (Newaygo)	Michigan DNR Fisheries Division	U	U	800-292-4706 (in-state); 517-373-7660 (out-state)	517-373-1280	31.64
51	McDuffee Creek	Michigan DNR Fisheries Division	U	U	800-292-4706 (in-state); 517-373-7660 (out-state)	517-373-1280	31.07
52	Muskegon River trib.	Michigan DNR Fisheries Division	U	U	800-292-4706 (in-state); 517-373-7660 (out-state)	517-373-1280	30.50

53	White River, S Branch trib.	Michigan DNR Fisheries Division	U	U	800-292-4706 (in-state); 517-373-7660 (out-state)	517-373-1280	29.97
54	Tamarack Creek	Michigan DNR Fisheries Division	U	U	800-292-4706 (in-state); 517-373-7660 (out-state)	517-373-1280	29.66
55	Pease Creek	Michigan DNR Fisheries Division	U	U	800-292-4706 (in-state); 517-373-7660 (out-state)	517-373-1280	29.63
56	Wetlands Reserve Program	Natural Resources Conservation Service	Peach Ave.	Grant	231-689-7354	616-942-4111	28.48
57	Wetlands Reserve Program	Natural Resources Conservation Service	W 80th St.	Fremont	231-689-7354	616-942-4111	24.69
58	Sand Creek (Newaygo)	Michigan DNR Fisheries Division	U	U	800-292-4706 (in-state); 517-373-7660 (out-state)	517-373-1280	22.64
59	Bennett Creek	Michigan DNR Fisheries Division	U	U	800-292-4706 (in-state); 517-373-7660 (out-state)	517-373-1280	22.49
60	Hickory Creek (Newaygo)	Michigan DNR Fisheries Division	U	U	800-292-4706 (in-state); 517-373-7660 (out-state)	517-373-1280	21.75
61	Fivemile Creek (Newaygo)	Michigan DNR Fisheries Division	U	U	800-292-4706 (in-state); 517-373-7660 (out-state)	517-373-1280	21.39
62	Little Muskegon River	Michigan DNR Fisheries Division	U	U	800-292-4706 (in-state); 517-373-7660 (out-state)	517-373-1280	21.07
63	Fremont Lake trib.	Michigan DNR Fisheries Division	U	U	800-292-4706 (in-state); 517-373-7660 (out-state)	517-373-1280	20.95
64	Butler Creek	Michigan DNR Fisheries Division	U	U	800-292-4706 (in-state); 517-373-7660 (out-state)	517-373-1280	20.75
65	West Michigan Creek	Michigan DNR Fisheries Division	U	U	800-292-4706 (in-state); 517-373-7660 (out-state)	517-373-1280	19.79
66	Flinton Creek	Michigan DNR Fisheries Division	U	U	800-292-4706 (in-state); 517-373-7660 (out-state)	517-373-1280	18.82
67	Rattlesnake Creek (Newaygo)	Michigan DNR Fisheries Division	U	U	800-292-4706 (in-state); 517-373-7660 (out-state)	517-373-1280	18.72

68	Brooks Creek trib.	Michigan DNR Fisheries Division	U	U	800-292-4706 (in-state); 517-373-7660 (out-state)	517-373-1280	17.19
69	Minnie Creek	Michigan DNR Fisheries Division	U	U	800-292-4706 (in-state); 517-373-7660 (out-state)	517-373-1280	16.52
70	Winnepesaug Creek	Michigan DNR Fisheries Division	U	U	800-292-4706 (in-state); 517-373-7660 (out-state)	517-373-1280	16.41
71	Penoyer Creek (Newaygo)	Michigan DNR Fisheries Division	U	U	800-292-4706 (in-state); 517-373-7660 (out-state)	517-373-1280	15.65
72	Costen Drain trib.	Michigan DNR Fisheries Division	U	U	800-292-4706 (in-state); 517-373-7660 (out-state)	517-373-1280	15.42
73	Wrights Creek	Michigan DNR Fisheries Division	U	U	800-292-4706 (in-state); 517-373-7660 (out-state)	517-373-1280	14.47
74	Costen Drain	Michigan DNR Fisheries Division	U	U	800-292-4706 (in-state); 517-373-7660 (out-state)	517-373-1280	13.60
75	Sand Creek trib.	Michigan DNR Fisheries Division	U	U	800-292-4706 (in-state); 517-373-7660 (out-state)	517-373-1280	13.54
76	Freeman Creek	Michigan DNR Fisheries Division	U	U	800-292-4706 (in-state); 517-373-7660 (out-state)	517-373-1280	13.50
77	Mullen Creek (Newaygo)	Michigan DNR Fisheries Division	U	U	800-292-4706 (in-state); 517-373-7660 (out-state)	517-373-1280	13.11
78	Mosquito Creek (Muskegon)	Michigan DNR Fisheries Division	U	U	800-292-4706 (in-state); 517-373-7660 (out-state)	517-373-1280	12.42
79	Holmes Drain	Michigan DNR Fisheries Division	U	U	800-292-4706 (in-state); 517-373-7660 (out-state)	517-373-1280	12.25
80	Blood Drain	Michigan DNR Fisheries Division	U	U	800-292-4706 (in-state); 517-373-7660 (out-state)	517-373-1280	11.69
81	Graham Creek	Michigan DNR Fisheries Division	U	U	800-292-4706 (in-state); 517-373-7660 (out-state)	517-373-1280	11.40
82	03-62-0011-P	Michigan DEQ	Michigan St.	Fremont	231-689-7354	517-241-7734	11.25
83	Brooks Creek (Newaygo)	Michigan DNR Fisheries Division	U	U	800-292-4706 (in-state); 517-373-7660 (out-state)	517-373-1280	10.80

84	Ryerson Lake trib.	Michigan DNR Fisheries Division	U	U	800-292-4706 (in-state); 517-373-7660 (out-state)	517-373-1280	10.34
85	McDuffee Creek trib.	Michigan DNR Fisheries Division	U	U	800-292-4706 (in-state); 517-373-7660 (out-state)	517-373-1280	9.80
86	E Branch Heald Creek	Michigan DNR Fisheries Division	U	U	800-292-4706 (in-state); 517-373-7660 (out-state)	517-373-1280	9.24
87	Paris Creek	Michigan DNR Fisheries Division	U	U	800-292-4706 (in-state); 517-373-7660 (out-state)	517-373-1280	9.21
88	Lynn Drain	Michigan DNR Fisheries Division	U	U	800-292-4706 (in-state); 517-373-7660 (out-state)	517-373-1280	9.19
89	Pere Marquette River, Little S Branch trib.	Michigan DNR Fisheries Division	U	U	800-292-4706 (in-state); 517-373-7660 (out-state)	517-373-1280	8.86
90	Betts Creek	Michigan DNR Fisheries Division	U	U	800-292-4706 (in-state); 517-373-7660 (out-state)	517-373-1280	8.61
91	Pere Marquette River, Big S Branch trib.	Michigan DNR Fisheries Division	U	U	800-292-4706 (in-state); 517-373-7660 (out-state)	517-373-1280	8.55
92	Flinton Creek trib.	Michigan DNR Fisheries Division	U	U	800-292-4706 (in-state); 517-373-7660 (out-state)	517-373-1280	8.51
93	James Creek	Michigan DNR Fisheries Division	U	U	800-292-4706 (in-state); 517-373-7660 (out-state)	517-373-1280	8.32
94	Allen Creek	Michigan DNR Fisheries Division	U	U	800-292-4706 (in-state); 517-373-7660 (out-state)	517-373-1280	8.23
95	Mosquito Creek trib.	Michigan DNR Fisheries Division	U	U	800-292-4706 (in-state); 517-373-7660 (out-state)	517-373-1280	8.13
96	02-62-0014-P	Michigan DEQ	E 136th St.	Grant	231-689-7354	517-241-7734	7.96
97	Veenboer Drain	Michigan DNR Fisheries Division	U	U	800-292-4706 (in-state); 517-373-7660 (out-state)	517-373-1280	7.91
98	Blair Drain	Michigan DNR Fisheries Division	U	U	800-292-4706 (in-state); 517-373-7660 (out-state)	517-373-1280	7.86
99	Fourmile Creek	Michigan DNR Fisheries Division	U	U	800-292-4706 (in-state); 517-373-7660 (out-state)	517-373-1280	7.80

100	Siems Creek	Michigan DNR Fisheries Division	U	U	800-292-4706 (in-state); 517-373-7660 (out-state)	517-373-1280	7.77
101	Dry Run	Michigan DNR Fisheries Division	U	U	800-292-4706 (in-state); 517-373-7660 (out-state)	517-373-1280	7.45
102	Whipple Creek	Michigan DNR Fisheries Division	U	U	800-292-4706 (in-state); 517-373-7660 (out-state)	517-373-1280	7.17
103	Williams Creek	Michigan DNR Fisheries Division	U	U	800-292-4706 (in-state); 517-373-7660 (out-state)	517-373-1280	7.01
104	Rogue River	Michigan DNR Fisheries Division	U	U	800-292-4706 (in-state); 517-373-7660 (out-state)	517-373-1280	6.93
105	Wright Drain	Michigan DNR Fisheries Division	U	U	800-292-4706 (in-state); 517-373-7660 (out-state)	517-373-1280	6.72
106	Cow Creek	Michigan DNR Fisheries Division	U	U	800-292-4706 (in-state); 517-373-7660 (out-state)	517-373-1280	6.68
107	Ludke Drain	Michigan DNR Fisheries Division	U	U	800-292-4706 (in-state); 517-373-7660 (out-state)	517-373-1280	6.53
108	03-62-0019	Michigan DEQ	Green Ave.	Fremont	231-689-7354	517-241-7734	6.44
109	Second Cole Creek	Michigan DNR Fisheries Division	U	U	800-292-4706 (in-state); 517-373-7660 (out-state)	517-373-1280	6.35
110	Minnie Creek trib.	Michigan DNR Fisheries Division	U	U	800-292-4706 (in-state); 517-373-7660 (out-state)	517-373-1280	6.28
111	Greenwood Creek	Michigan DNR Fisheries Division	U	U	800-292-4706 (in-state); 517-373-7660 (out-state)	517-373-1280	5.95
112	Moses Drain	Michigan DNR Fisheries Division	U	U	800-292-4706 (in-state); 517-373-7660 (out-state)	517-373-1280	5.92
113	Maple River (Newaygo)	Michigan DNR Fisheries Division	U	U	800-292-4706 (in-state); 517-373-7660 (out-state)	517-373-1280	5.74
114	Kimball Lake trib.	Michigan DNR Fisheries Division	U	U	800-292-4706 (in-state); 517-373-7660 (out-state)	517-373-1280	5.54
115	Dalziel Creek	Michigan DNR Fisheries Division	U	U	800-292-4706 (in-state); 517-373-7660 (out-state)	517-373-1280	5.50

116	unnamed creek	Michigan DNR Fisheries Division	U	U	800-292-4706 (in-state); 517-373-7660 (out-state)	517-373-1280	5.48
117	Hillbrand Drain	Michigan DNR Fisheries Division	U	U	800-292-4706 (in-state); 517-373-7660 (out-state)	517-373-1280	5.31
118	Whipple Creek trib.	Michigan DNR Fisheries Division	U	U	800-292-4706 (in-state); 517-373-7660 (out-state)	517-373-1280	5.12
119	Markle Drain	Michigan DNR Fisheries Division	U	U	800-292-4706 (in-state); 517-373-7660 (out-state)	517-373-1280	4.52
120	Woody Creek	Michigan DNR Fisheries Division	U	U	800-292-4706 (in-state); 517-373-7660 (out-state)	517-373-1280	4.21
121	Third Lake trib.	Michigan DNR Fisheries Division	U	U	800-292-4706 (in-state); 517-373-7660 (out-state)	517-373-1280	4.20
122	Cushman Creek trib.	Michigan DNR Fisheries Division	U	U	800-292-4706 (in-state); 517-373-7660 (out-state)	517-373-1280	4.19
123	W Branch Heald Creek	Michigan DNR Fisheries Division	U	U	800-292-4706 (in-state); 517-373-7660 (out-state)	517-373-1280	4.07
124	Fivemile Creek trib.	Michigan DNR Fisheries Division	U	U	800-292-4706 (in-state); 517-373-7660 (out-state)	517-373-1280	3.88
125	Maple River trib.	Michigan DNR Fisheries Division	U	U	800-292-4706 (in-state); 517-373-7660 (out-state)	517-373-1280	3.85
126	Winnepesaug Creek trib.	Michigan DNR Fisheries Division	U	U	800-292-4706 (in-state); 517-373-7660 (out-state)	517-373-1280	3.75
127	Hindes Drain	Michigan DNR Fisheries Division	U	U	800-292-4706 (in-state); 517-373-7660 (out-state)	517-373-1280	3.65
128	Cedar Creek trib.	Michigan DNR Fisheries Division	U	U	800-292-4706 (in-state); 517-373-7660 (out-state)	517-373-1280	3.60
129	Cow Creek trib.	Michigan DNR Fisheries Division	U	U	800-292-4706 (in-state); 517-373-7660 (out-state)	517-373-1280	3.52
130	First Lake trib.	Michigan DNR Fisheries Division	U	U	800-292-4706 (in-state); 517-373-7660 (out-state)	517-373-1280	3.36

131	Poll Drain	Michigan DNR Fisheries Division	U	U	800-292-4706 (in-state); 517-373-7660 (out-state)	517-373-1280	3.27
132	Bennett Creek trib.	Michigan DNR Fisheries Division	U	U	800-292-4706 (in-state); 517-373-7660 (out-state)	517-373-1280	3.19
133	Carlson Drain	Michigan DNR Fisheries Division	U	U	800-292-4706 (in-state); 517-373-7660 (out-state)	517-373-1280	3.18
134	Bear Creek	Michigan DNR Fisheries Division	U	U	800-292-4706 (in-state); 517-373-7660 (out-state)	517-373-1280	3.14
135	Slater Drain	Michigan DNR Fisheries Division	U	U	800-292-4706 (in-state); 517-373-7660 (out-state)	517-373-1280	3.11
136	Christenson Drain	Michigan DNR Fisheries Division	U	U	800-292-4706 (in-state); 517-373-7660 (out-state)	517-373-1280	3.01
137	03-62-0004-P	Michigan DEQ	N/A	Bitely	231-689-7354	517-241-7734	2.92
138	Tank Creek trib.	Michigan DNR Fisheries Division	U	U	800-292-4706 (in-state); 517-373-7660 (out-state)	517-373-1280	2.87
139	Geers Drain	Michigan DNR Fisheries Division	U	U	800-292-4706 (in-state); 517-373-7660 (out-state)	517-373-1280	2.86
140	02-62-0038	Michigan DEQ	Mason Dr.	Newaygo	231-689-7354	517-241-7734	2.77
141	Wright Drain trib.	Michigan DNR Fisheries Division	U	U	800-292-4706 (in-state); 517-373-7660 (out-state)	517-373-1280	2.56
142	Betts Creek trib.	Michigan DNR Fisheries Division	U	U	800-292-4706 (in-state); 517-373-7660 (out-state)	517-373-1280	2.36
143	Fourth Lake trib.	Michigan DNR Fisheries Division	U	U	800-292-4706 (in-state); 517-373-7660 (out-state)	517-373-1280	2.32
144	Pease Creek trib.	Michigan DNR Fisheries Division	U	U	800-292-4706 (in-state); 517-373-7660 (out-state)	517-373-1280	2.21
145	Wrights Creek trib.	Michigan DNR Fisheries Division	U	U	800-292-4706 (in-state); 517-373-7660 (out-state)	517-373-1280	1.98
146	James Creek trib.	Michigan DNR Fisheries Division	U	U	800-292-4706 (in-state); 517-373-7660 (out-state)	517-373-1280	1.95
147	Cushman Creek	Michigan DNR Fisheries Division	U	U	800-292-4706 (in-state); 517-373-7660 (out-state)	517-373-1280	1.86

148	Wetlands Reserve Program	Natural Resources Conservation Service	Slocum Rd.	Ravenna	231-724-6341	616-942-4111	1.67
149	00-62-0056	Michigan DEQ	N Mundy Ave.	White Cloud	231-689-7354	517-241-7734	1.43
150	Duke Creek trib.	Michigan DNR Fisheries Division	U	U	800-292-4706 (in-state); 517-373-7660 (out-state)	517-373-1280	0.86
151	S Mitchell Creek	Michigan DNR Fisheries Division	U	U	800-292-4706 (in-state); 517-373-7660 (out-state)	517-373-1280	0.85
152	Peck Lake and Mud Lake trib.	Michigan DNR Fisheries Division	U	U	800-292-4706 (in-state); 517-373-7660 (out-state)	517-373-1280	0.58
153	Indian Creek trib.	Michigan DNR Fisheries Division	U	U	800-292-4706 (in-state); 517-373-7660 (out-state)	517-373-1280	< 0.01

Special Designated Areas (Cont'd)

#	Name	City	Category	Waterbody	Location	Comments	Area(acres)
1	Newaygo Prairies-Steelcase	Bitely/White Cloud	Scientific and Natural Area	none	N of E Jackson St	This RNA represents undisturbed and recovering dry sand prairies and oak savannahs characterized by sparse woody vegetation such as pin oak (<i>Quercus palustris</i>), black oak (<i>Quercus velutina</i>), and eastern white pine (<i>Pinus strobus</i>).	1,029.51
2	Muskegon River (Muskegon)	U	Designated Trout Stream	Muskegon River; Muskegon River, N & S Channels	In southern Newaygo County and central Muskegon County.	Stream contains significant populations of trout and/or salmon.	990.58
3	Wetlands Reserve Program	Walkerville	Conservation Easement	Beaver Creek	Harrison & 200th Ave	<i>No Data</i>	664.05
4	Ore-Ida Prairie	Newaygo	Private Conservation Land	Cold Creek	E 58th St & Barberry Ave	<i>No Data</i>	377.48
5	S Branch White River	U	State Natural River	White River, S Branch	Flows from headwaters downstream to confluence with the mainstem of the White River.	State Natural Rivers are protected through a partnership between riverfront property owners, local units of government, and the Michigan DNR.	345.71
6	Great Lakes Fishery Trust	Newaygo	Private Nature Preserve	Muskegon River	Along the Muskegon River	<i>No Data</i>	293.45
7	CE-LCWM	White Cloud	Conservation Easement	Woodrail Lake; Robnson Creek; White River, South Branch	Wisner Ave & W Baseline Rd	Private	289.62
8	Wetlands Reserve Program	Paris	Conservation Easement	McDuffee Creek	12 Mile Rd & Oak Ave	<i>No Data</i>	229.49
9	Loda Lake National Wildlife Sanctuary	White Cloud	Nature Preserve	Loda Lake	6 Mile & Felch Ave	Co-managed with USFS	228.12
10	CE-LCWM	Newaygo	Conservation Easement	Muskegon River	Southern dead end of Hazlewood Ave	Private	188.78
11	Wetlands Reserve Program	Bitely	Conservation Easement	Pere Marquette River, Little S Branch	<i>No Data</i>	<i>No Data</i>	165.90
12	Sheridan Township Forest	Fremont	Forest Reserve	Butler Creek	88th St & Osborn Ave	<i>No Data</i>	165.82
13	CE-LCWM	Newaygo	Conservation Easement	Muskegon River	72nd St & Spruce Ave	Private	163.52

14	Newaygo Prairies Early RNA	Newaygo	Scientific and Natural Area	none	Poplar Ave & E 48th St	This RNA represents undisturbed and recovering dry sand prairies and oak savannahs characterized by sparse woody vegetation such as pin oak (<i>Quercus palustris</i>), black oak (<i>Quercus velutina</i>), and eastern white pine (<i>Pinus strobus</i>).	162.63
15	CE-LCWM	Bitely	Conservation Easement	McDuffee Creek	13 Mile Rd & Arthur Dr	Private	157.87
16	CE-LCWM	Bitely	Conservation Easement	Pere Marquette River, Little S Branch	Walnut Ave & E 17 Mile Rd	Private	155.48
17	Wetlands Reserve Program	White Cloud	Conservation Easement	none	Spruce Ave & 6 Mile Rd	<i>No Data</i>	152.40
18	Chain of Lakes	U	Designated Trout Stream	Chain of Lakes	In southwestern Newaygo County.	Stream contains significant populations of trout and/or salmon.	117.40
19	Newaygo Prairie	Newaygo	Private Nature Preserve	none	Located NE of Newaygo on the corner of Poplar Ave and 56th st	<i>No Data</i>	109.15
20	CE-LCWM	Bitely	Conservation Easement	Pease Creek	Pine Ave, N of 16 Mile Rd	Private	98.24
21	Karner Blue	Newaygo	Private Nature Preserve	none	in Brooks Township NE of Newaygo	<i>No Data</i>	81.06
22	Wetlands Reserve Program	Grant	Conservation Easement	none	N side of the E end of 136th St	<i>No Data</i>	74.80
23	CE-LCWM	Newaygo	Conservation Easement	Muskegon River	Borders Manistee National Forest and the Muskegon River	Private	70.59
24	Wetlands Reserve Program	Newaygo	Conservation Easement	unnamed pond	Spring Dr & W 72nd St	<i>No Data</i>	64.37
25	Wetlands Reserve Program	Grant	Conservation Easement	none	136th St & Spruce Ave	<i>No Data</i>	59.71
26	Wetlands Reserve Program	Fremont	Conservation Easement	none	Luce Ave & 80th St	<i>No Data</i>	54.71
27	Martin Creek (MI)	U	Designated Trout Stream	Martin Creek; White River, S Branch	In W central Newaygo County.	Stream contains significant populations of trout and/or salmon.	52.79
28	Wetlands Reserve Program	Grant	Conservation Easement	Sand Creek	NW of Wisner Ave & W 120th St	<i>No Data</i>	52.19

29	Wetlands Reserve Program	Fremont	Conservation Easement	none	74th St & Dickinson Ave	<i>No Data</i>	50.62
30	Mena Creek	U	Designated Trout Stream	Mena Creek; White River, S Branch	In W central Newaygo County.	Stream contains significant populations of trout and/or salmon.	50.53
31	Wetlands Reserve Program	Fremont	Conservation Easement	none	W 16th St & S Stone Rd	<i>No Data</i>	49.28
32	Tank Creek (Newaygo)	U	Designated Trout Stream	Tank Creek; Winnepesaug Creek	In N central Newaygo County.	Stream contains significant populations of trout and/or salmon.	48.59
33	CE-LCWM	Newaygo	Conservation Easement	Muskegon River	S Parson Ave's S end dead ends at easement	Private	47.71
34	Brooks Creek (Sheridan Twp.)	U	Designated Trout Stream	Brooks Creek	In southwestern Newaygo County and E central Muskegon County.	Stream contains significant populations of trout and/or salmon.	47.59
35	CE-LCWM	Newaygo	Conservation Easement	Muskegon River	E end of W 90th Ave	Private	47.30
36	Little S Branch Pere Marquette River	U	Designated Trout Stream	Little S Branch Pere Marquette River	In northeastern Newaygo County.	Stream contains significant populations of trout and/or salmon.	45.84
37	Wetlands Reserve Program	Howard	Conservation Easement	Ransom Creek	104th St & Locust St	<i>No Data</i>	44.10
38	Big S Branch Pere Marquette River	U	Designated Trout Stream	Big S Branch Pere Marquette River; Pere Marquette R.	In northwestern Newaygo County, northeastern Oceana County, and southern Mason County.	Stream contains significant populations of trout and/or salmon.	43.28
39	Newaygo Prairies Fee	Newaygo	Private Conservation Land	Bigelow Creek	N side of 58th St, at S Outaway Dr	Non-Governmental Organization Land	39.96
40	Wetlands Reserve Program	Grant	Conservation Easement	none	112th & Peach	<i>No Data</i>	37.33
41	Sailors Virgin Pine Forest	Newaygo	Nature Preserve	none	On 52nd Street, .25 mile E of Locust	Only remaining stand of virgin pine in area. Privately owned by James Sailors, open to the public for hiking, picnics. no camping; no fires.	34.94
42	Bigelow Creek	U	Designated Trout Stream	Bigelow Creek; Muskegon River	In southeastern Newaygo County.	Stream contains significant populations of trout and/or salmon.	33.95

43	Bigelow Creek trib.	U	Designated Trout Stream	unnamed creek; Bigelow Creek	In southeastern Newaygo County.	Stream contains significant populations of trout and/or salmon.	32.88
44	Wetlands Reserve Program	Walkerville	Conservation Easement	none	S side of Grant St, between Maple Island Rd and Dickinson Ave	<i>No Data</i>	32.84
45	Wetlands Reserve Program	Fremont	Conservation Easement	none	W of Ryerson Lake	<i>No Data</i>	32.46
46	Ewing Creek	U	Designated Trout Stream	Ewing Creek; McDuffee Creek	In northeastern Newaygo County.	Stream contains significant populations of trout and/or salmon.	32.33
47	S Branch White River	U	Designated Trout Stream	White River, S Branch	In E central Newaygo County.	Stream contains significant populations of trout and/or salmon.	31.78
48	Cedar Creek (Newaygo)	U	Designated Trout Stream	Cedar Creek; Big S Branch Pere Marquette River	In S central Lake County and northwestern Newaygo County.	Stream contains significant populations of trout and/or salmon.	31.64
49	McDuffee Creek	U	Designated Trout Stream	McDuffee Creek; Little S Branch Pere Marquette R.	In northeastern Newaygo County.	Stream contains significant populations of trout and/or salmon.	31.07
50	Tamarack Creek	U	Designated Trout Stream	Tamarack Creek; Muskegon River	In southeastern Mecosta County, northwestern Montcalm County, and southeastern Newaygo County.	Stream contains significant populations of trout and/or salmon.	29.66
51	Pease Creek	U	Designated Trout Stream	Pease Creek; Little S Branch Pere Marquette River	In northeastern Newaygo County.	Stream contains significant populations of trout and/or salmon.	29.63
52	Wetlands Reserve Program	Grant	Conservation Easement	unnamed pond	Peach Ave & 112th St	<i>No Data</i>	28.48
53	Wetlands Reserve Program	Fremont	Conservation Easement	unnamed ponds	N side of 80th St, between S Luce Ave and S Warner Ave	<i>No Data</i>	24.69
54	Wetlands Reserve Program	Grant	Conservation Easement	Crockery Creek	S side of 136th St, W of Catalpa Ave	<i>No Data</i>	23.86
55	Sand Creek (Newaygo)	U	Designated Trout Stream	Sand Creek; Muskegon River	In S central Newaygo County.	Stream contains significant populations of trout and/or salmon.	22.64

56	Bennett Creek	U	Designated Trout Stream	Bennett Creek; Hardy Dam Pond; Muskegon River	In E central Newaygo and SW Mecosta County.	Stream contains significant populations of trout and/or salmon.	22.49
57	Hickory Creek (Newaygo)	U	Designated Trout Stream	Hickory Creek; Rogue River	In northwestern Kent County and southeastern Newaygo County.	Stream contains significant populations of trout and/or salmon.	21.75
58	Newaygo Prairies Early RNA	Newaygo	Scientific and Natural Area	none	E side of road, S of Arbor Dr	This RNA represents undisturbed and recovering dry sand prairies and oak savannahs characterized by sparse woody vegetation such as pin oak (<i>Quercus palustris</i>), black oak (<i>Quercus velutina</i>), and eastern white pine (<i>Pinus strobus</i>).	21.52
59	Fivemile Creek (Newaygo)	U	Designated Trout Stream	Fivemile Creek; White River, S Branch	In E central Newaygo County.	Stream contains significant populations of trout and/or salmon.	21.39
60	Little Muskegon River	U	Designated Trout Stream	Little Muskegon River; Muskegon River	In S central Mecosta County, southeastern Newaygo County, and northwestern Montcalm County.	Stream contains significant populations of trout and/or salmon.	21.07
61	Butler Creek	U	Designated Trout Stream	Butler Creek; Brooks Creek	In southwestern Newaygo County.	Stream contains significant populations of trout and/or salmon.	20.75
62	West Michigan Creek	U	Designated Trout Stream	West Michigan Creek; Winnepesaug Creek	In northwestern Newaygo County.	Stream contains significant populations of trout and/or salmon.	19.79
63	Flinton Creek	U	Designated Trout Stream	Flinton Creek	In E central Newaygo County.	Stream contains significant populations of trout and/or salmon.	18.82
64	Rattlesnake Creek (Newaygo)	U	Designated Trout Stream	Rattlesnake Creek; White River, S Branch	In central Newaygo County.	Stream contains significant populations of trout and/or salmon.	18.72
65	Paris Creek trib.	U	Designated Trout Stream	unnamed creek; Paris Creek	In northeastern Newaygo County.	Stream contains significant populations of trout and/or salmon.	17.27

66	Brooks Creek trib.	U	Designated Trout Stream	unnamed creek; Brooks Creek	In southwestern Newaygo County.	Stream contains significant populations of trout and/or salmon.	17.19
67	Muskegon River trib.	U	Designated Trout Stream	unnamed creek; Muskegon River	In southwestern Newaygo County.	Stream contains significant populations of trout and/or salmon.	16.71
68	Minnie Creek	U	Designated Trout Stream	Minnie Creek; Muskegon River	In southwestern Newaygo County.	Stream contains significant populations of trout and/or salmon.	16.52
69	Winnepesaug Creek	U	Designated Trout Stream	Winnepesaug Creek; Big S Branch Pere Marquette R.	In northwestern Newaygo County.	Stream contains significant populations of trout and/or salmon.	16.41
70	Penoyer Creek (Newaygo)	U	Designated Trout Stream	Penoyer Creek; Muskegon River	In S central Newaygo County.	Stream contains significant populations of trout and/or salmon.	15.65
71	Paris Creek trib.	U	Designated Trout Stream	unnamed creek; Paris Creek	In northeastern Newaygo County and northwestern Mecosta County.	Stream contains significant populations of trout and/or salmon.	15.59
72	Costen Drain trib.	U	Designated Trout Stream	unnamed creek; Costen Drain	In southeastern Newaygo County.	Stream contains significant populations of trout and/or salmon.	15.42
73	Wrights Creek	U	Designated Trout Stream	Wrights Creek; White River, S Branch	In W central Newaygo County.	Stream contains significant populations of trout and/or salmon.	14.47
74	White River, S Branch trib.	U	Designated Trout Stream	unnamed creek; White River, S Branch	In W central Newaygo County.	Stream contains significant populations of trout and/or salmon.	13.95
75	Muskegon River trib.	U	Designated Trout Stream	unnamed creek; Muskegon River	In S central Newaygo County.	Stream contains significant populations of trout and/or salmon.	13.79
76	Costen Drain	U	Designated Trout Stream	Costen Drain; Rogue River	In southeastern Newaygo County.	Stream contains significant populations of trout and/or salmon.	13.60
77	Freeman Creek	U	Designated Trout Stream	Freeman Creek; Big S Branch Pere Marquette River	In northwestern Newaygo County.	Stream contains significant populations of trout and/or salmon.	13.50
78	Mullen Creek (Newaygo)	U	Designated Trout Stream	Mullen Creek; White River, S Branch	In E central Newaygo County.	Stream contains significant populations of trout and/or salmon.	13.11

79	Mosquito Creek (Muskegon)	U	Designated Trout Stream	Mosquito Creek	In southwestern Newaygo County and eastern Muskegon County.	Stream contains significant populations of trout and/or salmon.	12.42
80	Holmes Drain	U	Designated Trout Stream	Holmes Drain; Ackland Lake; Williams Creek	In S central Newaygo County.	Stream contains significant populations of trout and/or salmon.	12.25
81	Fremont Lake trib.	U	Designated Trout Stream	unnamed creek; Fremont Lake	In southwestern Newaygo County.	Stream contains significant populations of trout and/or salmon.	12.12
82	unnamed creek trib.	U	Designated Trout Stream	unnamed creek; Brooks Creek	In southwestern Newaygo County.	Stream contains significant populations of trout and/or salmon.	11.87
83	Blood Drain	U	Designated Trout Stream	Blood Drain; Blood Lake; Sand Creek	In southwestern Newaygo County.	Stream contains significant populations of trout and/or salmon.	11.69
84	Graham Creek	U	Designated Trout Stream	Graham Creek; Brooks Creek	In southwestern Newaygo County.	Stream contains significant populations of trout and/or salmon.	11.40
85	03-62-0011-P	Fremont	Conservation Easement	unnamed pond	Michigan St is off the N side of W 44th Ave, W of N Weaver Ave	MI-126098	11.25
86	Brooks Creek (Newaygo)	U	Designated Trout Stream	Brooks Creek; Muskegon River	In S central Newaygo County.	Stream contains significant populations of trout and/or salmon.	10.80
87	Ryerson Lake trib.	U	Designated Trout Stream	unnamed creek; Ryerson Lake	In S central Newaygo County.	Stream contains significant populations of trout and/or salmon.	10.34
88	McDuffee Creek trib.	U	Designated Trout Stream	unnamed creek; McDuffee Creek	In northeastern Newaygo County.	Stream contains significant populations of trout and/or salmon.	9.80
89	Sand Creek trib.	U	Designated Trout Stream	unnamed creek; Sand Creek	In S central Newaygo County.	Stream contains significant populations of trout and/or salmon.	9.45
90	E Branch Heald Creek	U	Designated Trout Stream	Heald Creek, E Branch; Martin Creek	In W central Newaygo County.	Stream contains significant populations of trout and/or salmon.	9.24
91	Paris Creek	U	Designated Trout Stream	Paris Creek; Muskegon River	In southeastern Lake County, northeastern Newaygo County, and northwestern Mecosta County.	Stream contains significant populations of trout and/or salmon.	9.21

92	Lynn Drain	U	Designated Trout Stream	Lynn Drain; Williams Creek	In S central Newaygo County.	Stream contains significant populations of trout and/or salmon.	9.19
93	White River, S Branch trib.	U	Designated Trout Stream	unnamed creek; White River, S Branch	In central Newaygo County.	Stream contains significant populations of trout and/or salmon.	9.13
94	Fremont Lake trib.	U	Designated Trout Stream	unnamed creek; Lorden Lake; Fremont Lake	In southwestern Newaygo County.	Stream contains significant populations of trout and/or salmon.	8.83
95	Pere Marquette River, Little S Branch trib.	U	Designated Trout Stream	unnamed creek; Pere Marquette River, Little S Branch	In northeastern Newaygo County.	Stream contains significant populations of trout and/or salmon.	8.64
96	Betts Creek	U	Designated Trout Stream	Betts Creek; Hardy Dam Pond; Muskegon River	In northeastern Newaygo County and W central Mecosta County.	Stream contains significant populations of trout and/or salmon.	8.61
97	Pere Marquette River, Big S Branch trib.	U	Designated Trout Stream	unnamed creek; Big S Branch Pere Marquette River	In northwestern Newaygo County.	Stream contains significant populations of trout and/or salmon.	8.55
98	Flinton Creek trib.	U	Designated Trout Stream	unnamed creek; Flinton Creek	In E central Newaygo County.	Stream contains significant populations of trout and/or salmon.	8.51
99	unnamed creek trib.	U	Designated Trout Stream	unnamed creek; Paris Creek	In northeastern Newaygo County and northwestern Mecosta County.	Stream contains significant populations of trout and/or salmon.	8.37
100	Allen Creek	U	Designated Trout Stream	Allen Creek; Big S Branch Pere Marquette River	In northeastern Oceana County and northwestern Newaygo County.	Stream contains significant populations of trout and/or salmon.	8.23
101	unnamed creek trib.	U	Designated Trout Stream	unnamed creek; Paris Creek	In northeastern Newaygo County.	Stream contains significant populations of trout and/or salmon.	8.21
102	02-62-0014-P	Grant	Conservation Easement	none	S side of the road, just E of Willow Ave	MI-126092	7.96
103	Veenboer Drain	U	Designated Trout Stream	Veenboer Drain, Rogue River	In southeastern Newaygo County.	Stream contains significant populations of trout and/or salmon.	7.91
104	Blair Drain	U	Designated Trout Stream	Blair Drain; Minnie Creek	In southwestern Newaygo County.	Stream contains significant populations of trout and/or salmon.	7.86

105	Fourmile Creek	U	Designated Trout Stream	Fourmile Creek; Muskegon River	In S central Newaygo County.	Stream contains significant populations of trout and/or salmon.	7.80
106	Siems Creek	U	Designated Trout Stream	Siems Creek; Butler Creek	In southwestern Newaygo County.	Stream contains significant populations of trout and/or salmon.	7.77
107	Mosquito Creek trib.	U	Designated Trout Stream	unnamed creek; Mosquito Creek	In southwestern Newaygo County.	Stream contains significant populations of trout and/or salmon.	7.55
108	Dry Run	U	Designated Trout Stream	Dry Run; Butler Creek	In southwestern Newaygo County.	Stream contains significant populations of trout and/or salmon.	7.45
109	Whipple Creek	U	Designated Trout Stream	Whipple Creek; McDuffee Creek	In northeastern Newaygo County.	Stream contains significant populations of trout and/or salmon.	7.17
110	Williams Creek	U	Designated Trout Stream	Williams Creek; Butler Creek	In southwestern Newaygo County.	Stream contains significant populations of trout and/or salmon.	7.01
111	Rogue River	U	Designated Trout Stream	Rogue River	In northwestern Kent County and southeastern Newaygo County.	Stream contains significant populations of trout and/or salmon.	6.93
112	White River, S Branch trib.	U	Designated Trout Stream	unnamed creek; White River, S Branch	In E central Newaygo County.	Stream contains significant populations of trout and/or salmon.	6.90
113	Wright Drain	U	Designated Trout Stream	Wright Drain; Markle Drain	In southeastern Newaygo County.	Stream contains significant populations of trout and/or salmon.	6.72
114	Cow Creek	U	Designated Trout Stream	Cow Creek; Brooks Creek	In southwestern Newaygo County.	Stream contains significant populations of trout and/or salmon.	6.68
115	Ludke Drain	U	Designated Trout Stream	Ludke Drain; unnamed creek	In S central Newaygo County.	Stream contains significant populations of trout and/or salmon.	6.53
116	03-62-0019	Fremont	Conservation Easement	none	Green Ave & Locust St	Private	6.44
117	Second Cole Creek	U	Designated Trout Stream	Second Cole Creek; White River, S Branch	In central Newaygo County.	Stream contains significant populations of trout and/or salmon.	6.35

118	Minnie Creek trib.	U	Designated Trout Stream	unnamed creek; Minnie Creek	In southwestern Newaygo County.	Stream contains significant populations of trout and/or salmon.	6.28
119	Greenwood Creek	U	Designated Trout Stream	Greenwood Creek; Muskegon River	In S central Newaygo County.	Stream contains significant populations of trout and/or salmon.	5.95
120	Moses Drain	U	Designated Trout Stream	Moses Drain; Christenson Drain	In S central Newaygo County.	Stream contains significant populations of trout and/or salmon.	5.92
121	Maple River (Newaygo)	U	Designated Trout Stream	Maple River; Muskegon River	In southwestern Newaygo County and E central Muskegon County.	Stream contains significant populations of trout and/or salmon.	5.74
122	Kimball Lake trib.	U	Designated Trout Stream	unnamed creek; Kimball Lake	In S central Newaygo County.	Stream contains significant populations of trout and/or salmon.	5.54
123	Dalziel Creek	U	Designated Trout Stream	Dalziel Creek; Muskegon River	In northeastern Newaygo County.	Stream contains significant populations of trout and/or salmon.	5.50
124	Hillbrand Drain	U	Designated Trout Stream	Hillbrand Drain; Rogue River	In northwestern Kent County and southeastern Newaygo County.	Stream contains significant populations of trout and/or salmon.	5.31
125	unnamed creek trib.	U	Designated Trout Stream	unnamed creek	In northeastern Newaygo County.	Stream contains significant populations of trout and/or salmon.	5.23
126	Whipple Creek trib.	U	Designated Trout Stream	unnamed creek; Whipple Creek	In northeastern Newaygo County.	Stream contains significant populations of trout and/or salmon.	5.12
127	Bigelow Creek trib.	U	Designated Trout Stream	unnamed creek; Bigelow Creek	In central Newaygo County.	Stream contains significant populations of trout and/or salmon.	4.93
128	Markle Drain	U	Designated Trout Stream	Markle Drain; Cedar Creek	In northeastern Muskegon County and southwestern Newaygo County.	Stream contains significant populations of trout and/or salmon.	4.52
129	James Creek	U	Designated Trout Stream	James Creek	In E central Newaygo County.	Stream contains significant populations of trout and/or salmon.	4.37
130	Woody Creek	U	Designated Trout Stream	Wood Creek; Big S Branch Pere Marquette River	In northwestern Newaygo County.	Stream contains significant populations of trout and/or salmon.	4.21

131	Third Lake trib.	U	Designated Trout Stream	unnamed creek; Third Lake	In southwestern Newaygo County.	Stream contains significant populations of trout and/or salmon.	4.20
132	Cushman Creek trib.	U	Designated Trout Stream	unnamed creek; Cushman Creek	In southeastern Newaygo County and southeastern Oceana County.	Stream contains significant populations of trout and/or salmon.	4.19
133	unnamed creek	U	Designated Trout Stream	unnamed creek	In northeastern Newaygo County.	Stream contains significant populations of trout and/or salmon.	4.15
134	Sand Creek trib.	U	Designated Trout Stream	unnamed creek; Sand Creek	In southwestern Newaygo County.	Stream contains significant populations of trout and/or salmon.	4.09
135	W Branch Heald Creek	U	Designated Trout Stream	Heald Creek, W Branch; Martin Creek	In W central Newaygo County.	Stream contains significant populations of trout and/or salmon.	4.07
136	James Creek	U	Designated Trout Stream	James Creek; White River, S Branch	In E central Newaygo County.	Stream contains significant populations of trout and/or salmon.	3.94
137	Fivemile Creek trib.	U	Designated Trout Stream	unnamed creek; Fivemile Creek	In central Newaygo County.	Stream contains significant populations of trout and/or salmon.	3.88
138	Maple River trib.	U	Designated Trout Stream	unnamed creek; Maple River	In southwestern Newaygo County.	Stream contains significant populations of trout and/or salmon.	3.85
139	unnamed creek trib.	U	Designated Trout Stream	unnamed creek; Fourth Lake	In southwestern Newaygo County.	Stream contains significant populations of trout and/or salmon.	3.75
140	Winnepesaug Creek trib.	U	Designated Trout Stream	unnamed creek; Winnepesaug Creek	In northwestern Newaygo County.	Stream contains significant populations of trout and/or salmon.	3.75
141	Hindes Drain	U	Designated Trout Stream	Hindes Drain; Ford Lake	In southwestern Newaygo County.	Stream contains significant populations of trout and/or salmon.	3.65
142	Cedar Creek trib.	U	Designated Trout Stream	unnamed creek; Cedar Creek	In northwestern Newaygo County.	Stream contains significant populations of trout and/or salmon.	3.60
143	Cow Creek trib.	U	Designated Trout Stream	unnamed creek; Cow Creek	In northeastern Muskegon County and southwestern Newaygo County.	Stream contains significant populations of trout and/or salmon.	3.52

144	unnamed creek trib.	U	Designated Trout Stream	unnamed creek; Kimball Lake	In S central Newaygo County.	Stream contains significant populations of trout and/or salmon.	3.46
145	unnamed creek trib.	U	Designated Trout Stream	unnamed creek; Big S Branch Pere Marquette River	In northwestern Newaygo County.	Stream contains significant populations of trout and/or salmon.	3.42
146	First Lake trib.	U	Designated Trout Stream	unnamed creek; First Lake	In southwestern Newaygo County.	Stream contains significant populations of trout and/or salmon.	3.36
147	Poll Drain	U	Designated Trout Stream	Poll Drain; Cushman Creek	In southwestern Newaygo County.	Stream contains significant populations of trout and/or salmon.	3.27
148	unnamed creek trib.	U	Designated Trout Stream	unnamed creek; Paris Creek	In northeastern Newaygo County and southeastern Lake County.	Stream contains significant populations of trout and/or salmon.	3.23
149	Bennett Creek trib.	U	Designated Trout Stream	unnamed creek; Bennett Creek	In E central Newaygo County.	Stream contains significant populations of trout and/or salmon.	3.19
150	Carlson Drain	U	Designated Trout Stream	Carlson Drain; Minnie Creek	In southwestern Newaygo County.	Stream contains significant populations of trout and/or salmon.	3.18
151	Bear Creek	U	Designated Trout Stream	Bear Creek; Winnepesaug Creek	In northwestern Newaygo County.	Stream contains significant populations of trout and/or salmon.	3.14
152	Slater Drain	U	Designated Trout Stream	Slater Drain; Hall Drain	In SW Newaygo County and SE Muskegon County.	Stream contains significant populations of trout and/or salmon.	3.11
153	Christenson Drain	U	Designated Trout Stream	Christenson Drain; Fourmile Creek	In S central Newaygo County.	Stream contains significant populations of trout and/or salmon.	3.01
154	unnamed creek trib.	U	Designated Trout Stream	unnamed creek; Minnie Creek	In southwestern Newaygo County.	Stream contains significant populations of trout and/or salmon.	2.93
155	03-62-0004-P	Bitely	Conservation Easement	unnamed pond	<i>No Data</i>	MI-126097	2.92
156	Tank Creek trib.	U	Designated Trout Stream	unnamed creek; Tank Creek	In N central Newaygo County.	Stream contains significant populations of trout and/or salmon.	2.87

157	Geers Drain	U	Designated Trout Stream	Geers Drain; Rogue River	In northwestern Kent County and southeastern Newaygo County.	Stream contains significant populations of trout and/or salmon.	2.86
158	02-62-0038	Newaygo	Conservation Easement	unnamed stream	Behind (W of) Hansen Collision of Newaygo	MI-126096	2.77
159	unnamed creek trib.	U	Designated Trout Stream	unnamed creek; Bigelow Creek	In central Newaygo County.	Stream contains significant populations of trout and/or salmon.	2.57
160	Wright Drain trib.	U	Designated Trout Stream	unnamed creek; Wright Drain	In southeastern Newaygo County.	Stream contains significant populations of trout and/or salmon.	2.56
161	Betts Creek trib.	U	Designated Trout Stream	unnamed creek; Betts Creek	In northeastern Newaygo County.	Stream contains significant populations of trout and/or salmon.	2.36
162	Fourth Lake trib.	U	Designated Trout Stream	unnamed creek; Fourth Lake	In southwestern Newaygo County.	Stream contains significant populations of trout and/or salmon.	2.32
163	Pease Creek trib.	U	Designated Trout Stream	unnamed creek; Pease Creek	In southeastern Lake County.	Stream contains significant populations of trout and/or salmon.	2.21
164	Wrights Creek trib.	U	Designated Trout Stream	unnamed creek; Wrights Creek	In W central Newaygo County.	Stream contains significant populations of trout and/or salmon.	1.98
165	James Creek trib.	U	Designated Trout Stream	unnamed creek; James Creek	In E central Newaygo County.	Stream contains significant populations of trout and/or salmon.	1.95
166	unnamed creek trib.	U	Designated Trout Stream	unnamed creek; Fremont Lake	In southwestern Newaygo County.	Stream contains significant populations of trout and/or salmon.	1.95
167	unnamed creek trib.	U	Designated Trout Stream	unnamed creek; White River, S Branch	In E central Newaygo County.	Stream contains significant populations of trout and/or salmon.	1.91
168	Cushman Creek	U	Designated Trout Stream	Cushman Creek; White River, S Branch	In southeastern Oceana County.	Stream contains significant populations of trout and/or salmon.	1.86
169	Wetlands Reserve Program	Ravenna	Conservation Easement	none	Slocum Rd & Bailey Rd	<i>No Data</i>	1.67
170	00-62-0056	White Cloud	Conservation Easement	Diamond Lake	N Mundy Ave & N Iroquois Dr	MI-126091	1.43

171	unnamed creek	U	Designated Trout Stream	unnamed creek	In northeastern Newaygo County and southeastern Lake County.	Stream contains significant populations of trout and/or salmon.	1.33
172	Duke Creek trib.	U	Designated Trout Stream	unnamed creek; Duke Creek	In southeastern Newaygo County, northwestern Montcalm County, and N central Kent County.	Stream contains significant populations of trout and/or salmon.	0.86
173	S Mitchell Creek	U	Designated Trout Stream	S Mitchell Creek; Hardy Dam Pond; Muskegon River	In northeastern Newaygo County and W central Mecosta County.	Stream contains significant populations of trout and/or salmon.	0.85
174	Peck Lake and Mud Lake trib.	U	Designated Trout Stream	unnamed creek; Peck Lake; Mud Lake	In southwestern Newaygo County.	Stream contains significant populations of trout and/or salmon.	0.58
175	Mosquito Creek trib.	U	Designated Trout Stream	unnamed creek; Mosquito Creek	In E central and southeastern Muskegon County.	Stream contains significant populations of trout and/or salmon.	0.58
176	Pere Marquette River, Little S Branch trib.	U	Designated Trout Stream	unnamed creek; Pere Marquette River, Little S Branch	In S central Lake County and N central Newaygo County.	Stream contains significant populations of trout and/or salmon.	0.22
177	Indian Creek trib.	U	Designated Trout Stream	unnamed creek; Indian Creek	In southeastern Muskegon County.	Stream contains significant populations of trout and/or salmon.	< 0.01

Managed Lands

#	Name	Agency	Address	City	Emergency Phone	Contact Phone	Area(acres)
1	Manistee	US Forest Service	N/A	N/A	911	800-821-6263	26,064.06
2	Muskegon	MI DNR, Wildlife Division	7600 E Messinger	Twin Lake	231-724-6236	231-788-5055	5,841.50
3	Newaygo	MI DNR, Parks and Recreation Division	2793 Beech St.	Newaygo	231-689-7303	231-856-4452	416.08
4	Arboretum Park	City of Fremont	Arboretum Dr.	Fremont	231-689-7303	231-924-2101	10.52
5	Rogue River	MI DNR, Wildlife Division	Muskegon St.	Kent City	616-632-6111	231-788-5055	0.14

Managed Lands (Cont'd)

#	Name	City	Category	Waterbody	Location	Comments	Area(acres)
1	Manistee	N/A	National Forest	Lake Michigan; multiple lakes and rivers	NW Lower Penninsula	<i>No Data</i>	26,064.06
2	Muskegon	Twin Lake	State Game Area	Muskegon River; Cedar Cr.; Little Cedar Cr.; Maple River; Spring Cr.; Mosquito Cr.	East of Muskegon	http://www.michigan.gov/dnr/publications/pdfs/huntingwildlifehabitat/sga/muskegon.pdf	5,841.50
3	Newaygo	Newaygo	State Park	Hardy Dam Pond	Take US Hwy 131 to exit 125 and go W 5 miles to Beech Street. Go N on Beech St. to the park entrance.	<i>No Data</i>	416.08
4	Arboretum Park	Fremont	Park	none	Arboretum Dr & Iriquois Dr intersect at the SE corner of the park	<i>No Data</i>	10.52
5	Rogue River	Kent City	State Game Area	Rouge River; Duke Creek; Spring Creek; Walter Creek; Spring L.; Clear L.	East of Kent city off Muskegon St after Paine Ave NW	http://www.michigan.gov/dnr/publications/pdfs/huntingwildlifehabitat/sga/rogueriver.pdf	0.14

Threatened and Endangered Species

#	Species	Status	Habitat	Area(acres)
1	Northern long-eared bat	Threatened	Hibernates in caves and mines - swarming in surrounding wooded areas in autumn. Roosts and forages in upland forests during spring and summer.	551,480.89
2	Eastern massasauga	Threatened	<i>No Data</i>	551,480.89
3	Karner blue butterfly	Endangered	Pine barrens and oak savannas on sandy soils and containing wild lupines (<i>Lupinus perennis</i>), the only known food plant of larvae.	551,480.89

Hazardous Materials Storage

#	Name	Address	City	Emergency Phone	Emergency Contact	Local Contact	Count
1	Gerber Products Co.	405 State St	Fremont	231-928-2000	John Hruby, Environmental Supervisor	Abby Marek; 231-689-7354	1
2	Engineered Polymer Solutions, Inc. d/b/a Valspar Coatings - Fremont	411 North Darling Ave N	Fremont	612-851-7000	Daryl Dierwechter, Division HSE Manager	Abby Marek; 231-689-7354	1
3	Wilbur-Ellis Co. - Grant	277 S Maple St Po Box 495	Grant	559-457-2260	Iris P. Bush, SARA Specialist	Abby Marek; 231-689-7354	1
4	North American Refractories Co	1301 East 8th St	White Cloud	412-375-6600	Rhonda Vete, Sr Manager Corporate EHS	Abby Marek; 231-689-7354	1
5	Carajon Chemical Co., Inc.	505 South Division	Fremont	231-414-3021	David E Johnson, President	Abby Marek; 231-689-7354	1
6	Dura Automotive Systems - Fremont	502 Connie Ave	Fremont	231-924-0930	Linda Thompke, Environmental Representative	Abby Marek; 231-689-7354	1
7	Newaygo Warehouse	579 S. Park Drive	Newaygo	231-652-4582	Brian Chadwell, General Manager	Abby Marek; 231-689-7354	1

Hazardous Materials Storage (Cont'd)

#	Name	City	Contact Phone	Materials/CAS	Count
1	Gerber Products Co.	Fremont	231-928-2837	7664417; 7697372; 79210	1
2	Engineered Polymer Solutions, Inc. d/b/a Valspar Coatings - Fremont	Fremont	231-924-3950	7664939; 7664417	1
3	Wilbur-Ellis Co. - Grant	Grant	231-834-5689	1910425; 86500; 23135220	1
4	North American Refractories Co	White Cloud	231-689-6641	108952	1
5	Carajon Chemical Co., Inc.	Fremont	231-924-3900	1314847	1
6	Dura Automotive Systems - Fremont	Fremont	231-924-0930	7664939	1
7	Newaygo Warehouse	Newaygo	231-652-4450	7664939	1

Risk Management Plan (RMP) Facilities

#	Name	Address	City	Facility Registry Service Report	Count
1	GERBER PRODUCTS CO	405 STATE STREET	FREMONT	https://ofmpub.epa.gov/frs_public2/fii_query_detail_disp_program_facility?p_registry_id=110000410341	1
2	ENGINEERED POLYMER SOLUTIONS INC D/B/A VALSPAR COATINGS	411 N DARLING AVE	FREMONT	https://ofmpub.epa.gov/frs_public2/fii_query_detail_disp_program_facility?p_registry_id=110002349058	1

EPLAN/Tier II Facilities

#	Name	Address	City	Facility Registry Service Report	Count
1	MAGNA MIRRORS CORPORATION - NEWAYGO	700 S. PARK DR.	NEWAYGO	https://ofmpub.epa.gov/frs_public2/fii_query_detail_disp_program_facility?p_registry_id=110041158920	1
2	NORTH AMERICAN REFRACTORIES CO	PO BOX 807, M-37 & 8TH STREET	WHITE CLOUD	https://ofmpub.epa.gov/frs_public2/fii_query_detail_disp_program_facility?p_registry_id=110061985641	1
3	NEWAYGO WAREHOUSE	579 S. PARK DRIVE	NEWAYGO	https://ofmpub.epa.gov/frs_public2/fii_query_detail_disp_program_facility?p_registry_id=110061851857	1
4	CROTON DEHYDRATION PLANT	8415 SOUTH ELM ROAD	NEWAYGO	https://ofmpub.epa.gov/frs_public2/fii_query_detail_disp_program_facility?p_registry_id=110062072698	1
5	EXCEL PROPANE	8980 MASON DR	NEWAYGO	https://ofmpub.epa.gov/frs_public2/fii_query_detail_disp_program_facility?p_registry_id=110061976875	1
6	AMERIGAS PROPANE	7333 NORTH WOODBRIDGE	BROHMAN	https://ofmpub.epa.gov/frs_public2/fii_query_detail_disp_program_facility?p_registry_id=110061838757	1
7	CASTROL LUBECON	201 NORTH WEBSTER	WHITE CLOUD	https://ofmpub.epa.gov/frs_public2/fii_query_detail_disp_program_facility?p_registry_id=110061932146	1
8	AT&T - M43134	25 E MAIN ST	FREMONT	https://ofmpub.epa.gov/frs_public2/fii_query_detail_disp_program_facility?p_registry_id=110062043765	1
9	CROTON	6505 SWAN AVE	NEWAYGO	https://ofmpub.epa.gov/frs_public2/fii_query_detail_disp_program_facility?p_registry_id=110003620680	1
10	DURA AUTOMOTIVE SYSTEMS LLC	502 CONNIE AVENUE	FREMONT	https://ofmpub.epa.gov/frs_public2/fii_query_detail_disp_program_facility?p_registry_id=110009392424	1
11	GERBER PRODUCTS CO	405 STATE STREET	FREMONT	https://ofmpub.epa.gov/frs_public2/fii_query_detail_disp_program_facility?p_registry_id=110000410341	1
12	MI KMA HEADEND	11792 SOUTH MASON DRIVE	GRANT	https://ofmpub.epa.gov/frs_public2/fii_query_detail_disp_program_facility?p_registry_id=110061829954	1

13	BUSCH OIL COMPANY	812 W. MAIN STREET	FREMONT	https://ofmpub.epa.gov/frs_public2/fii_query_detail_disp_program_facility?p_registry_id=110045697199	1
14	AT&T - M43146	91 EXCHANGE ST	GRANT	https://ofmpub.epa.gov/frs_public2/fii_query_detail_disp_program_facility?p_registry_id=110062033286	1
15	EXCEL FREMONT	11775 N. MAPLE ISLAND ROAD	FREMONT	https://ofmpub.epa.gov/frs_public2/fii_query_detail_disp_program_facility?p_registry_id=110056629108	1
16	AMERIGAS	835 CROTON RD	NEWAYGO	https://ofmpub.epa.gov/frs_public2/fii_query_detail_disp_program_facility?p_registry_id=110061818617	1
17	GOODWELL COMPRESSOR STATION	6579 EAST 5 MILE ROAD	WHITE CLOUD	https://ofmpub.epa.gov/frs_public2/fii_query_detail_disp_program_facility?p_registry_id=110061895926	1
18	GOODWELL CTB T14N-R11W	S SIDE OF 5 MILE BETWEEN LOCUS & ELM AVE.	WHITE CLOUD	https://ofmpub.epa.gov/frs_public2/fii_query_detail_disp_program_facility?p_registry_id=110061875001	1
19	SCHWAN'S HOME SERVICE, INC.-104130	1230 LOCUST ST	FREMONT	https://ofmpub.epa.gov/frs_public2/fii_query_detail_disp_program_facility?p_registry_id=110061904480	1
20	KOHLEY'S SUPERIOR PROPANE	7671 WEST 48TH STREET	FREMONT	https://ofmpub.epa.gov/frs_public2/fii_query_detail_disp_program_facility?p_registry_id=110061919401	1
21	NORTH CENTRAL CO-OP - FREMONT	540 W MAIN	FREMONT	https://ofmpub.epa.gov/frs_public2/fii_query_detail_disp_program_facility?p_registry_id=110061959750	1
22	AT&T - M43196	147 BENSON ST	WHITE CLOUD	https://ofmpub.epa.gov/frs_public2/fii_query_detail_disp_program_facility?p_registry_id=110062087673	1
23	METC FELCH ROAD SUBSTATION	1100 WEST 72ND STREET	NEWAYGO	https://ofmpub.epa.gov/frs_public2/fii_query_detail_disp_program_facility?p_registry_id=110061966831	1
24	CRYSTAL FLASH #42	7667 36TH ST	NEWAYGO	https://ofmpub.epa.gov/frs_public2/fii_query_detail_disp_program_facility?p_registry_id=110061808913	1
25	AMERIGAS-FREMONT	5857 S. WARNER AVENUE	FREMONT	https://ofmpub.epa.gov/frs_public2/fii_query_detail_disp_program_facility?p_registry_id=110062015322	1

26	AMERICAN GAS & OIL, INC.	233 FRONT	GRANT	https://ofmpub.epa.gov/frs_public2/fii_query_detail_disp_program_facility?p_registry_id=110062110004	1
27	CARAJON CHEMICAL CO INC	505 S DIVISION	FREMONT	https://ofmpub.epa.gov/frs_public2/fii_query_detail_disp_program_facility?p_registry_id=110003583774	1
28	MIDWEST PROPANE WHITE CLOUD	3181 SOUTH EVERGREEN	WHITE CLOUD	https://ofmpub.epa.gov/frs_public2/fii_query_detail_disp_program_facility?p_registry_id=110056660171	1
29	FRONTIER HESPERIA CENTRAL OFFICE (MI6110005)	90 N DIVISION ST	HESPERIA	https://ofmpub.epa.gov/frs_public2/fii_query_detail_disp_program_facility?p_registry_id=110061857183	1
30	AT&T - M43168	21 E WOOD STREET	NEWAYGO	https://ofmpub.epa.gov/frs_public2/fii_query_detail_disp_program_facility?p_registry_id=110062093844	1
31	TRIPLE LAKES LODGE	5238 13 MILE RD	BITLEY	https://ofmpub.epa.gov/frs_public2/fii_query_detail_disp_program_facility?p_registry_id=110061985473	1
32	SPEEDWAY LLC	8500 MASON DR	NEWAYGO	https://ofmpub.epa.gov/frs_public2/fii_query_detail_disp_program_facility?p_registry_id=110015836684	1
33	STATE GOODWELL & SMITH 1-11A HD-3	BEECH AVE NE/SE/SE SEC 11 T14N-R11W	WHITE CLOUD	https://ofmpub.epa.gov/frs_public2/fii_query_detail_disp_program_facility?p_registry_id=110061921782	1
34	USA LINCOLN 1-4	6 MILE ROAD, NE/NW/NE, SEC 4, T14N-R13	BROHMAN	https://ofmpub.epa.gov/frs_public2/fii_query_detail_disp_program_facility?p_registry_id=110061880530	1
35	GRANT AMOCO	12432 MASON DR.	GRANT	https://ofmpub.epa.gov/frs_public2/fii_query_detail_disp_program_facility?p_registry_id=110061847275	1
36	NORWICH 28 CPF	667 E POLK ROAD NW/SW/SE SECTION 28 T15N-R11W	BIG RAPIDS	https://ofmpub.epa.gov/frs_public2/fii_query_detail_disp_program_facility?p_registry_id=110061984571	1
37	SPEEDWAY LLC	902 W MAIN ST	FREMONT	https://ofmpub.epa.gov/frs_public2/fii_query_detail_disp_program_facility?p_registry_id=110003639457	1
38	TRADING POST-GAS	12633 MASON DR	GRANT	https://ofmpub.epa.gov/frs_public2/fii_query_detail_disp_program_facility?p_registry_id=110061840058	1

39	WILBUR-ELLIS CO	277 S. MAPLE	GRANT	https://ofmpub.epa.gov/frs_public2/fii_query_detail_disp_program_facility?p_registry_id=110038225328	1
----	-----------------	--------------	-------	---	---

Railroads

#	Railroad	Emergency Phone	Contact Phone	Class	Length(mi)
1	Marquette Rail	866-527-3499	231-845-9000	<i>No Data</i>	41.06
2	Mid-Michigan Railroad	866-527-3499	989-797-5128	<i>No Data</i>	4.51
3	N/A	N/A	N/A	<i>No Data</i>	0.56

Oil and Natural Gas Pipelines

#	Name	System	Description	Length(mi)
1	Michigan Consolidated Gas Co.	<i>No Data</i>	Natural Gas Pipeline	46.88
2	ANR Pipeline Co.	Gathering	Natural Gas Pipeline	37.05
3	Michigan Consolidated Gas Co.	Central	Natural Gas Pipeline	35.28
4	ANR Pipeline Co.	Transmission	Natural Gas Pipeline	12.76
5	ANR Pipeline Co.	<i>No Data</i>	Natural Gas Pipeline	5.34

Marinas

#	Name	Address	City	Emergency Phone	Contact Phone	Waterbody	Count
1	Wierenga's Hess Lake Park	876 E 88th St.	Newaygo	231-689-6623	231-652-6541	Hess Lake	1
2	Sportsman Trailer Park & C.G.	2500 Sportsman Dr.	White Cloud	231-689-6623	231-689-6496	Hardy Pond, Muskegon River	1
3	Sarns Resort	4398 Newcosta Ave.	Morley	231-689-6623	231-823-2233	Hardy Pond, Muskegon River	1

Boat Access

#	Name	Operator	Waterbody	Latitude	Longitude	Count
1	Highbank Lake	USFS	Highbank Lake	43.7707000002265	-85.88980000000447	1
2	Nichols Lake	USFS	Nichols Lake	43.73100000061095	-85.9100999997914	1
3	Nichols Lake	USFS	Nichols Lake	43.720499999821186	-85.90890000015497	1
4	Benton Lake	USFS	Benton Lake	43.671800000593066	-85.8914999999106	1
5	Twinwood Lake	USFS	Twinwood Lake	43.47250000014901	-85.76850000023842	1
6	Shelley Lake	USFS	Shelley Lake	43.711799999699	-85.80719999969006	1
7	Brush Lake	USFS	Brush Lake	43.63910000026226	-85.6862000003457	1
8	Hungerford Lake	USFS	Hungerford Lake	43.69519999995828	-85.61849999986589	1
9	Indian Lake	USFS	Indian Lake	43.67159999907017	-85.82290000002831	1
10	Englewright	Flat River FO	Englewright Lake	43.32300000078976	-85.585199999623	1
11	Pine Street	Flat River FO	Muskegon River	43.42339999973774	-85.67549999989569	1
12	Hardy Dam Pond	Baldwin FO	Hardy Dam Pond	43.504200000315905	-85.58640000037849	1
13	Bills	Flat River FO	Bills Lake	43.39509999938309	-85.6699999999255	1
14	High Rollway	Baldwin FO	Muskegon River	43.414899999275804	-85.71899999957532	1
15	Ransom	Flat River FO	Ransom Lake	43.35920000076294	-85.69379999954253	1
16	Brooks	Flat River FO	Brooks Lake	43.403100000694394	-85.75870000012219	1
17	Hess	Flat River FO	Hess Lake	43.393300000578165	-85.78289999999106	1
18	Andersons Flats	Flat River FO	Muskegon River	43.38880000077188	-85.82859999965876	1
19	Muskegon	Flat River FO	Muskegon River	43.41520000062883	-85.81140000000596	1
20	Diamond	Flat River FO	Diamond Lake	43.60300000011921	-85.81149999983609	1
21	Robinson	Flat River FO	Robinson Lake	43.535499999299645	-85.85130000021309	1
22	Pickerel	Flat River FO	Pickerel Lake	43.45590000040829	-85.81039999984205	1
23	Henning.park	Newaygo County	Muskegon River	43.41899999976158	-85.79000000003725	1
24	Maple Island	Flat River FO	Muskegon River	43.318399999290705	-86.03349999990314	1
25	Marl Pit Creek	Flat River FO	Marl Pit Creek	43.36229999922216	-85.91650000028312	1

Non-navigational Dams

#	Name	Latitude	Longitude	Count
1	CROTON	43.42170000076294	-85.80169999971986	1
2	HARDY	43.48829999938607	-85.62999999988824	1
3	MINNIE LAKE DAM	43.56900000013411	-86.03959999978542	1
4	White Cloud Dam	43.55000000074506	-85.77500000037253	1
5	Pease Creek Dam	43.794700000435114	-85.69969999976456	1
6	TORNBLOOM	43.683299999684095	-85.58330000005662	1
7	Rowe Dam No 2	43.42830000072718	-85.78670000005513	1
8	HENKIN POND DAM	43.73330000042915	-86.01669999957085	1
9	Rowe Dam No 1	43.42500000074506	-85.79669999983162	1
10	Michigan Creek Dam	43.69999999925494	-85.86670000012964	1

Rivers and Streams

#	Name	Feature	Length(mi)
1	Muskegon River	Stream	35.83
2	South Branch White River	Stream	26.77
3	<i>No Data</i>	Stream	26.27
4	Big South Branch Pere Marquette River	Stream	14.59
5	Beaver Creek	Stream	14.55
6	Brooks Creek	Stream	12.10
7	Muskegon River	Artificial Path	11.07
8	Cedar Creek	Stream	11.03
9	McDuffee Creek	Stream	9.12
10	Crockery Creek	Stream	6.52
11	Mena Creek	Stream	6.41
12	Little Muskegon River	Stream	5.64
13	Winnepesaug Creek	Stream	3.11
14	Bigelow Creek	Stream	2.95
15	Tamarack Creek	Stream	2.76
16	Mena Creek	Stream Intermittent	1.62
17	<i>No Data</i>	Stream Intermittent	1.39
18	Little Muskegon River	Artificial Path	1.26
19	Cedar Creek	Stream Intermittent	1.17
20	Brooks Creek	Artificial Path	1.04
21	Brooks Creek	Stream Intermittent	0.76
22	Crockery Creek	Stream Intermittent	0.38

Lakes and Ponds

#	Name	Description	Area(acres)
1	No Data	Lake/Pond: Hydrographic Category = Perennial; Stage = Average Wat	2,432.17
2	No Data	Lake/Pond: Hydrographic Category = Perennial	921.54
3	Croton Dam Pond	Lake/Pond: Hydrographic Category = Perennial	873.29
4	Fremont Lake	Lake/Pond: Hydrographic Category = Perennial	795.90
5	Hess Lake	Lake/Pond: Hydrographic Category = Perennial	753.65
6	Hardy Dam Pond	Lake/Pond: Hydrographic Category = Perennial	472.44
7	Brooks Lake	Lake/Pond: Hydrographic Category = Perennial	277.03
8	Ryerson Lake	Lake/Pond: Hydrographic Category = Perennial	239.31
9	Diamond Lake	Lake/Pond: Hydrographic Category = Perennial	185.10
10	Bills Lake	Lake/Pond: Hydrographic Category = Perennial	174.99
11	Nichols Lake	Lake/Pond: Hydrographic Category = Perennial	161.05
12	Pettit Lake	Lake/Pond: Hydrographic Category = Perennial	158.16
13	Kimball Lake	Lake/Pond: Hydrographic Category = Perennial	143.71
14	Pickerel Lake	Lake/Pond: Hydrographic Category = Perennial	133.68
15	Robinson Lake	Lake/Pond: Hydrographic Category = Perennial	130.66
16	Crystal Lake	Lake/Pond: Hydrographic Category = Perennial	117.35
17	Hesperia Pond	Lake/Pond: Hydrographic Category = Perennial	81.47
18	Baptist Lake	Lake/Pond: Hydrographic Category = Perennial	80.35
19	Mud Lake	Lake/Pond: Hydrographic Category = Perennial	73.47
20	No Data	Reservoir; Reservoir Type = Treatment	71.79
21	Conover Lake	Lake/Pond: Hydrographic Category = Perennial	67.90
22	Island Lake	Lake/Pond: Hydrographic Category = Perennial	63.63
23	Walkup Lake	Lake/Pond: Hydrographic Category = Perennial	60.64
24	Webinguaw Lake	Lake/Pond: Hydrographic Category = Perennial	60.05
25	Blanch Lake	Lake/Pond: Hydrographic Category = Perennial	58.88
26	Peck Lake	Lake/Pond: Hydrographic Category = Perennial	58.83
27	Lilley Lake	Lake/Pond: Hydrographic Category = Perennial	58.68

28	Sand Lake	Lake/Pond: Hydrographic Category = Perennial	54.94
29	White Cloud, Lake	Lake/Pond: Hydrographic Category = Perennial	53.96
30	Englewright Lake	Lake/Pond: Hydrographic Category = Perennial	50.98
31	Kimes Lake	Lake/Pond: Hydrographic Category = Perennial	47.66
32	Pettibone Lake	Lake/Pond: Hydrographic Category = Perennial	43.67
33	Houseman Lake	Lake/Pond: Hydrographic Category = Perennial	43.24
34	Third Lake	Lake/Pond: Hydrographic Category = Perennial	42.40
35	Rollway Lake	Lake/Pond: Hydrographic Category = Perennial	39.51
36	Lamoreaux Lake	Lake/Pond: Hydrographic Category = Perennial	37.68
37	Amaung Lake	Lake/Pond: Hydrographic Category = Perennial	37.05
38	Peterson Lake	Lake/Pond: Hydrographic Category = Perennial	35.28
39	Minnie Lake	Lake/Pond: Hydrographic Category = Perennial	35.10
40	Kemperman Lake	Lake/Pond: Hydrographic Category = Perennial	34.57
41	Indian Lake	Lake/Pond: Hydrographic Category = Perennial	34.25
42	Fourth Lake	Lake/Pond: Hydrographic Category = Perennial	33.86
43	Hungerford Lake	Lake/Pond: Hydrographic Category = Perennial	33.84
44	Ransom Lake	Lake/Pond: Hydrographic Category = Perennial	33.60
45	Loon Lake	Lake/Pond: Hydrographic Category = Perennial	32.91
46	Ford Lake	Lake/Pond: Hydrographic Category = Perennial	32.54
47	Benton Lake	Lake/Pond: Hydrographic Category = Perennial	32.36
48	Clarks Lake	Lake/Pond: Hydrographic Category = Perennial	30.77
49	Bass Lake	Lake/Pond: Hydrographic Category = Perennial	30.58
50	Bitely Lake	Lake/Pond: Hydrographic Category = Perennial	30.42
51	Twinwood Lake	Lake/Pond: Hydrographic Category = Perennial	30.18
52	Sisson Lake	Lake/Pond: Hydrographic Category = Perennial	29.42
53	Second Lake	Lake/Pond: Hydrographic Category = Perennial	29.07
54	Blacksmith Lake	Lake/Pond: Hydrographic Category = Perennial	28.39

55	Triple Lakes	Lake/Pond: Hydrographic Category = Perennial	25.33
56	<i>No Data</i>	Lake/Pond: Hydrographic Category = Intermittent	24.47
57	John Ford Lake	Lake/Pond: Hydrographic Category = Perennial	23.37
58	Turnbull Lake	Lake/Pond: Hydrographic Category = Perennial	22.61
59	Bisel Lake	Lake/Pond: Hydrographic Category = Perennial	22.44
60	Mountain Lake	Lake/Pond: Hydrographic Category = Perennial	22.04
61	Little Robinson Lake	Lake/Pond: Hydrographic Category = Perennial	21.95
62	Isaac Lake	Lake/Pond: Hydrographic Category = Perennial	21.95
63	Tourcotte Lake	Lake/Pond: Hydrographic Category = Perennial	20.50
64	Blackberry Lake	Lake/Pond: Hydrographic Category = Perennial	19.81
65	Fry Lake	Lake/Pond: Hydrographic Category = Intermittent	19.56
66	Highbank Lake	Lake/Pond: Hydrographic Category = Perennial	19.11
67	Brush Lake	Lake/Pond: Hydrographic Category = Perennial	18.29
68	Mill Lake	Lake/Pond: Hydrographic Category = Perennial	18.17
69	Woods, Lake of the	Lake/Pond: Hydrographic Category = Perennial	18.13
70	Crepin Lake	Lake/Pond: Hydrographic Category = Perennial	17.97
71	Greening Lake	Lake/Pond: Hydrographic Category = Perennial	16.94
72	Oxford Lake	Lake/Pond: Hydrographic Category = Perennial	16.80
73	Evans Lake	Lake/Pond: Hydrographic Category = Perennial	16.49
74	Loda Lake	Lake/Pond: Hydrographic Category = Perennial	16.07
75	Cook and White Lake	Lake/Pond: Hydrographic Category = Perennial	15.62
76	Harness Marsh	Lake/Pond: Hydrographic Category = Intermittent	14.84
77	Tucker Lake	Lake/Pond: Hydrographic Category = Perennial	14.76
78	Alley Lake	Lake/Pond: Hydrographic Category = Perennial	14.32
79	Butterfield Lake	Lake/Pond: Hydrographic Category = Perennial	14.29
80	Eaves Lake	Lake/Pond: Hydrographic Category = Perennial	13.87
81	Burris Lake	Lake/Pond: Hydrographic Category = Perennial	13.86

82	Utley Lake	Lake/Pond: Hydrographic Category = Perennial	13.71
83	Leaf Lake	Lake/Pond: Hydrographic Category = Perennial	13.70
84	Shelley Lake	Lake/Pond: Hydrographic Category = Perennial	13.36
85	Frey Lake	Lake/Pond: Hydrographic Category = Perennial	13.32
86	McGann Lake	Lake/Pond: Hydrographic Category = Perennial	13.24
87	Bolen Lake	Lake/Pond: Hydrographic Category = Perennial	13.05
88	Richmond Lake	Lake/Pond: Hydrographic Category = Perennial	12.87
89	Brant Lake	Lake/Pond: Hydrographic Category = Perennial	12.75
90	Maple Lake	Lake/Pond: Hydrographic Category = Perennial	12.65
91	Dutch Lake	Lake/Pond: Hydrographic Category = Perennial	12.06
92	Middle Lake	Lake/Pond: Hydrographic Category = Perennial	11.92
93	Sawkaw Lake	Lake/Pond: Hydrographic Category = Perennial	11.37
94	Moonbeam Lake	Lake/Pond: Hydrographic Category = Perennial	11.35
95	Perch Lake	Lake/Pond: Hydrographic Category = Perennial	11.09
96	Condon Lake	Lake/Pond: Hydrographic Category = Perennial	11.02
97	Crofoot Lake	Lake/Pond: Hydrographic Category = Perennial	11.00
98	Biddleman Marsh	Lake/Pond: Hydrographic Category = Intermittent	10.82
99	Murphy Lake	Lake/Pond: Hydrographic Category = Perennial	10.60
100	Merrill Lake	Lake/Pond: Hydrographic Category = Perennial	10.47
101	Black Lake	Lake/Pond: Hydrographic Category = Perennial	10.44
102	Cole Lake	Lake/Pond: Hydrographic Category = Perennial	10.42
103	Savage Lake	Lake/Pond: Hydrographic Category = Perennial	10.29
104	Winnepesaug Lake	Lake/Pond: Hydrographic Category = Perennial	10.26
105	Hoyt Lake	Lake/Pond: Hydrographic Category = Perennial	9.56
106	Grandpa Lakes	Lake/Pond: Hydrographic Category = Perennial	9.19
107	Mystery Lake	Lake/Pond: Hydrographic Category = Perennial	9.18
108	Flanders Lake	Lake/Pond: Hydrographic Category = Perennial	9.08

109	Gustafson Marsh	Lake/Pond: Hydrographic Category = Intermittent	9.04
110	June Lake	Lake/Pond: Hydrographic Category = Perennial	8.91
111	Schultz Lake	Lake/Pond: Hydrographic Category = Perennial	8.91
112	Truckey Lake	Lake/Pond: Hydrographic Category = Perennial	8.91
113	Atodd Lake	Lake/Pond: Hydrographic Category = Perennial	8.77
114	Abeys Lake	Lake/Pond: Hydrographic Category = Perennial	8.51
115	Bub Lake	Lake/Pond: Hydrographic Category = Perennial	8.47
116	Halverson Lake	Lake/Pond: Hydrographic Category = Perennial	8.09
117	Kinney Lake	Lake/Pond: Hydrographic Category = Perennial	8.01
118	Bluegill Lake	Lake/Pond: Hydrographic Category = Perennial	7.99
119	Harwell Lake	Lake/Pond: Hydrographic Category = Perennial	7.69
120	Skipperville Lake	Lake/Pond: Hydrographic Category = Perennial	7.61
121	Cope Lake	Lake/Pond: Hydrographic Category = Perennial	7.57
122	Pearl Lake	Lake/Pond: Hydrographic Category = Perennial	7.40
123	Whipple Lake	Lake/Pond: Hydrographic Category = Perennial	7.30
124	First Lake	Lake/Pond: Hydrographic Category = Perennial	7.18
125	North Lake	Lake/Pond: Hydrographic Category = Perennial	6.88
126	Lorden Lake	Lake/Pond: Hydrographic Category = Perennial	6.75
127	Blood Lake	Lake/Pond: Hydrographic Category = Perennial	6.60
128	Kirchner Lake	Lake/Pond: Hydrographic Category = Perennial	6.54
129	Berger Pond	Lake/Pond: Hydrographic Category = Perennial	5.86
130	South Lake	Lake/Pond: Hydrographic Category = Perennial	5.68
131	Railroad Lake	Lake/Pond: Hydrographic Category = Perennial	5.50
132	Woods Lake	Lake/Pond: Hydrographic Category = Perennial	5.44
133	Toft Lake	Lake/Pond: Hydrographic Category = Perennial	5.33
134	Little Mud Lake	Lake/Pond: Hydrographic Category = Perennial	5.17
135	Carey Lake	Lake/Pond: Hydrographic Category = Intermittent	5.16

136	Sis Lake	Lake/Pond: Hydrographic Category = Perennial	4.92
137	Faupell Lake	Lake/Pond: Hydrographic Category = Perennial	4.77
138	Kenosha Lake	Lake/Pond: Hydrographic Category = Perennial	4.37
139	Musketeep Lake	Lake/Pond: Hydrographic Category = Perennial	3.68
140	Ackland Lake	Lake/Pond: Hydrographic Category = Perennial	3.52
141	Moore Lake	Lake/Pond: Hydrographic Category = Perennial	3.15
142	Little Lake	Lake/Pond: Hydrographic Category = Perennial	3.00
143	Baldwin Lake	Lake/Pond: Hydrographic Category = Perennial	2.13
144	Somers Lake	Lake/Pond: Hydrographic Category = Perennial	1.73