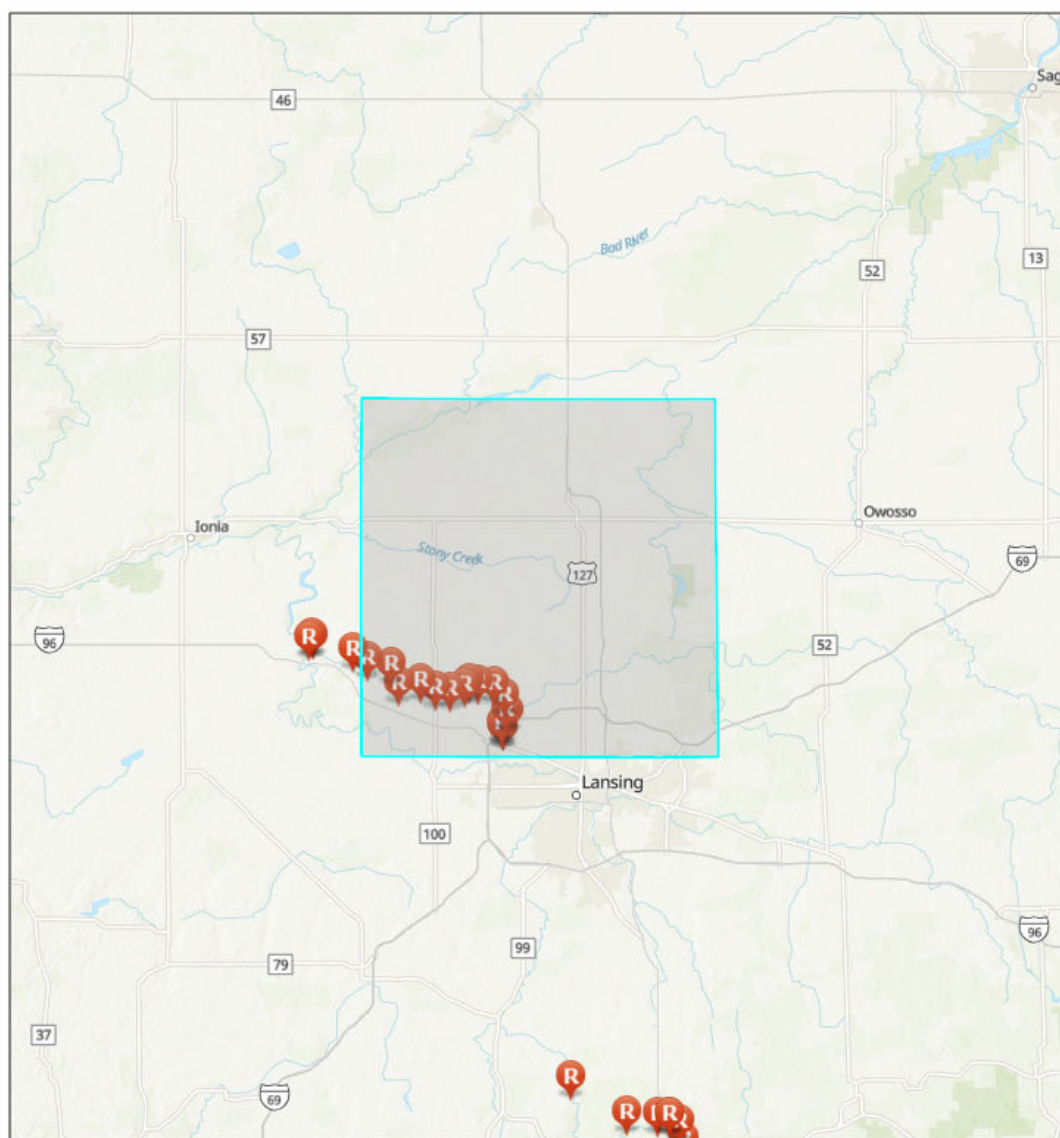


Area of Interest (AOI) Information

Sep 3 2020 11:14:17 Eastern Daylight Time



1,822,149

0 5 10 20 mi

0 5 10 20 km

Sources: Esri, Airbus DS, USGS, NGA, NASA, CGIAR, N Robinson, NCEAS, NLS, OS, NMA, Geodatasysteisen, Rijkswaterstaat, GSA, Geoland, FEMA, Intermap and the GIS user community. Sources: Esri, HERE, Garmin, FAO, NOAA, USGS, © OpenStreetMap contributors, and the GIS User Community, Upper Mississippi River Basin Association, Great Lakes Commission, USEPA.

CLINTON COUNTY, MICHIGAN

Summary

Name	Count	Area(acres)	Length(mi)
Local EOC	1	N/A	N/A
Public Health Departments	0	N/A	N/A
County Contacts	1	367,716.87	N/A
State Contacts	1	367,716.87	N/A
Major Cities and Towns	11	N/A	N/A
Tribal Lands	0	0	N/A
Tribal Lands (Cont'd)	0	0	N/A
Hospitals	1	N/A	N/A
Hospitals (Cont'd)	1	N/A	N/A
Urgent Care Facilities	1	N/A	N/A
Water Intakes	0	N/A	N/A
Water Intakes (Cont'd)	0	N/A	N/A
Wastewater Treatment Facilities	14	N/A	N/A
Special Designated Areas	20	541.01	N/A
Special Designated Areas (Cont'd)	20	541.01	N/A
Managed Lands	6	7,099.98	N/A
Managed Lands (Cont'd)	6	7,099.98	N/A
Other Environmentally Sensitive Areas	0	0	N/A
Other Environmentally Sensitive Areas (Cont'd)	0	0	N/A
Historic Places	0	N/A	N/A
Archaeological Sites	0	0	N/A
Threatened and Endangered Species	4	1,470,867.50	N/A
Aboveground Storage Tanks	1	N/A	N/A
Aboveground Storage Tanks (Cont'd)	1	N/A	N/A
Hazardous Materials Storage	6	N/A	N/A
Hazardous Materials Storage (Cont'd)	6	N/A	N/A
Facility Response Plan (FRP) Facilities	2	N/A	N/A
Risk Management Plan (RMP) Facilities	3	N/A	N/A
EPLAN/Tier II Facilities	51	N/A	N/A
Railroads	2	N/A	9.22
Petroleum Pipelines	3	N/A	42.22
Oil and Natural Gas Pipelines	29	N/A	183.55
Marinas	0	N/A	N/A
Boat Access	6	N/A	N/A
Navigational Locks and Dams	0	N/A	N/A
Non-navigational Dams	6	N/A	N/A
Rivers and Streams	35	N/A	173.64

Lakes and Ponds	57	1,797.20	N/A
Response Strategies	0	N/A	N/A
Response Strategies (Cont'd)	0	N/A	N/A
Response Strategies (Cont'd)	0	N/A	N/A

Local EOC

#	Name	Address	City	Phone	Has Generator	Directions	Count
1	CLINTON COUNTY EMERGENCY OPERATIONS CENTER	100 EAST STATE STREET	SAINT JOHNS	989-227-6595	Y	SOUTH SIDE OF E STATE STREET BETWEEN LINDEN STREET AND MAPLE STREET DIRCTLY ACROSS FROM N CLINTON AVE	1

County Contacts

#	County	Point of Contact	Emergency Management Phone	LEPC Chair	LEPC Phone	Local Health Department Phone	Area(acres)
1	Clinton, Michigan	Tom Helms	989-227-6595	Tom Helms	989-227-6595	989-831-5522	367,716.87

State Contacts

#	State Emergency Management Phone	24-hr Emergency Management Phone	State Health Department Phone	Homeland Security	Area(acres)
1	517-284-3946	800-292-4706	517-335-9030	313-596-2590	367,716.87

Major Cities and Towns

#	Name	Population	Elevation (Feet)	Count
1	Saint Johns	7865	794	1
2	DeWitt	4507	837	1
3	Eagle	123	837	1
4	Elsie	966	735	1
5	Fowler	1208	741	1
6	Maple Rapids	672	686	1
7	Ovid	1603	732	1
8	Westphalia	923	761	1
9	Bath	2083	863	1
10	Lake Victoria	930	810	1
11	Wacousta	1440	797	1

Hospitals

#	Name	Address	City	Phone	Type	Status	Count
1	SPARROW CLINTON HOSPITAL	805 S OAKLAND	SAINT JOHNS	NOT AVAILABLE	CRITICAL ACCESS	OPEN	1

Hospitals (Cont'd)

#	Name	City	Trauma Level	Helipad	Number of Beds	Owner	Count
1	SPARROW CLINTON HOSPITAL	SAINT JOHNS	NOT AVAILABLE	Y	22	NON-PROFIT	1

Urgent Care Facilities

#	Name	Address	Address2	City	Phone	Directions	Count
1	DELTA MEDICAL CENTER	12970 SOUTH OLD UNITED STATES HIGHWAY 27	<i>No Data</i>	DEWITT	517-669-8345	LOCATED ON THE W SIDE OF S OLD US HWY 27 ABOUT .04 MILES N OF W HERBISON RD	1

Wastewater Treatment Facilities

#	Name	Address	City	Waterbody	Count
1	ST JOHNS WWTP	1000 NORTH U.S. 27	ST JOHNS	ST JOHNS BIG DITCH DRAIN	2
2	FOWLER WWSL	10723 NORTH DR	FOWLER	FOWLER EXTENSION NO. 2 DRAIN	2
3	SOUTHERN CLINTON CO WWTP	3671 WEST HERBISON ROAD	DEWITT	LOOKING GLASS RIVER	2
4	MAPLE RAPIDS WWSL	AT GARFIELD RD	MAPLE RAPIDS	MAPLE RIVER	2
5	WESTPHALIA WWSL	204 N WILLOW	WESTPHALIA	THOME-WIEBER DRAIN TO STONEY CREEK	2
6	OVID WWSL	1501 S. MAIN ST	OVID	MAPLE RIVER	2
7	ELSIE WWSL	7485 N PARK AVE	ELSIE	MAPLE RIVER	2

Special Designated Areas

#	Name	Agency	Address	City	Emergency Phone	Phone	Area(acres)
1	Priggooris Lake Restoration	Michigan Wildlife Conservancy	6380 Drumheller Road	Bath	989-224-5200	517-641-7677	139.44
2	Wetlands Reserve Program	Natural Resources Conservation Service	Peacock Rd.	Laingsburg	989-227-6595	616-942-4111	120.13
3	Wetlands Reserve Program	Natural Resources Conservation Service	Centerline Rd.	St. Johns	989-227-6595	616-942-4111	83.44
4	Richard A. Padgett Natural Area	DeWitt Township	Herbison Rd.	DeWitt	989-224-5200	517-668-0270	64.40
5	Wetlands Reserve Program	Natural Resources Conservation Service	E Hyde Rd.	Elsie	989-227-6595	616-942-4111	38.39
6	Wetlands Reserve Program	Natural Resources Conservation Service	Grange Rd.	Hubbardston	989-227-6595	616-942-4111	38.12
7	00-19-0020	Michigan DEQ	Arbor Meadows Dr.	Dewitt	989-227-6595	517-241-7734	12.05
8	03-19-0014	Michigan DEQ	Watertown Pkwy.	Lansing	989-227-6595	517-241-7734	8.28
9	06-19-0014	Michigan DEQ	Chandler Rd.	Dewitt	989-227-6595	517-241-7734	6.64
10	07-19-0031	Michigan DEQ	Boichot Rd.	Lansing	989-227-6595	517-241-7734	6.16
11	Nichols Drain	Michigan DNR Fisheries Division	U	U	800-292-4706 (in-state); 517-373-7660 (out-state)	517-373-1280	6.02
12	06-19-0026	Michigan DEQ	Hawk Hollow Dr. E	Bath	989-227-6595	517-241-7734	5.79
13	Fifield Creek	Michigan DNR Fisheries Division	U	U	800-292-4706 (in-state); 517-373-7660 (out-state)	517-373-1280	3.49
14	04-19-0016	Michigan DEQ	Monroe Rd.	Portland	989-227-6595	517-241-7734	3.18
15	01-19-0017	Michigan DEQ	Warm Creek Way	Dewitt	989-227-6595	517-241-7734	1.55
16	01-19-0021	Michigan DEQ	Technical Dr.	Saint Johns	989-227-6595	517-241-7734	1.25
17	Fraye Creek	Michigan DNR Fisheries Division	U	U	800-292-4706 (in-state); 517-373-7660 (out-state)	517-373-1280	1.15
18	Goose Creek trib.	Michigan DNR Fisheries Division	U	U	800-292-4706 (in-state); 517-373-7660 (out-state)	517-373-1280	0.82
19	00-19-0015	Michigan DEQ	Crossover Dr.	Dewitt	989-227-6595	517-241-7734	0.71
20	07-33-0027	Michigan DEQ	Abbot Rd.	Lansing	517-676-8223	517-241-7734	< 0.01

Special Designated Areas (Cont'd)

#	Name	City	Category	Waterbody	Location	Comments	Area(acres)
1	Priggooris Lake Restoration	Bath	Nature Preserve	Priggooris Lake; Grass Lake	<i>No Data</i>	<i>No Data</i>	139.44
2	Wetlands Reserve Program	Laingsburg	Conservation Easement	Vermilion Creek	Entrance is on the W side of Peacock Rd, N of Britton Rd	<i>No Data</i>	120.13
3	Wetlands Reserve Program	St. Johns	Conservation Easement	none	N side of Centerline Rd, between Watson Rd and Chandler Rd	<i>No Data</i>	83.44
4	Richard A. Padgett Natural Area	DeWitt	Natural Area	none	Located on Herbison Road, halfway between Airport and Schavey Roads	<i>No Data</i>	64.40
5	Wetlands Reserve Program	Elsie	Conservation Easement	none	Entrance is on S side of Hyde Rd, between Krepps Rd and Chandler Rd	<i>No Data</i>	38.39
6	Wetlands Reserve Program	Hubbardston	Conservation Easement	none	Entrance is on the E side of Grange Rd, between Island Rd and Maple Rapids Rd	<i>No Data</i>	38.12
7	00-19-0020	Dewitt	Conservation Easement	none	Arbor Meadows Dr & S Dewitt Rd	Private	12.05
8	03-19-0014	Lansing	Conservation Easement	none	Watertown Pkwy & Grand River Ave	Private	8.28
9	06-19-0014	Dewitt	Conservation Easement	Looking Glass River	<i>No Data</i>	Private	6.64
10	07-19-0031	Lansing	Conservation Easement	unnamed pond	W side of Woodside Golf Course	Private	6.16
11	Nichols Drain	U	Designated Trout Stream	Nichols Drain; Fifield Creek	In northwestern Clinton County.	Stream contains significant populations of trout and/or salmon.	6.02
12	06-19-0026	Bath	Conservation Easement	none	E side of Hawk Hollow Golf Course	Private	5.79
13	Fifield Creek	U	Designated Trout Stream	Fifield Creek; Fish Creek	In southwestern Gratiot County and northwestern Clinton County.	Stream contains significant populations of trout and/or salmon.	3.49
14	04-19-0016	Portland	Conservation Easement	none	Close to where the Looking Glass River intersects Monroe Rd	Private	3.18
15	01-19-0017	Dewitt	Conservation Easement	unnamed pond	Warm Creek Dr & Paradise Way	Private	1.55
16	01-19-0021	Saint Johns	Conservation Easement	none	E side of Save-A-Lot Warehouse	Private	1.25

17	Fraye Creek	U	Designated Trout Stream	Fraye Creek; Grand River	In southeastern Ionia County and N central Eaton County.	Stream contains significant populations of trout and/or salmon.	1.15
18	Goose Creek trib.	U	Designated Trout Stream	unnamed creek; Goose Creek	In E central Ionia County.	Stream contains significant populations of trout and/or salmon.	0.82
19	00-19-0015	Dewitt	Conservation Easement	none	Behind (E of) Meijer	Private	0.71
20	07-33-0027	Lansing	Conservation Easement	none	E side of Abbot Rd, S of Chandler Crossings	Private	< 0.01

Managed Lands

#	Name	Agency	Address	City	Emergency Phone	Contact Phone	Area(acres)
1	Rose Lake State	MI DNR, Wildlife Division	8562 E Stoll Rd.	East Lansing	989-224-5200	517-641-4903	3,073.94
2	Sleepy Hollow	MI DNR, Parks and Recreation Division	7835 E Price Rd.	Laingsburg	989-224-5200	517-651-6217	2,680.23
3	Maple River	MI DNR, Wildlife Division	N/A	N/A	989-224-5200	517-373-9358	983.68
4	Muskrat Lake	MI DNR, Wildlife Division	W Jason Rd.	Dewitt	989-224-5200	517-373-9358	211.91
5	Portland	MI DNR, Wildlife Division	Charlotte Hwy	Portland	616-527-5737	616-794-2658	143.79
6	Babcock Landing	MI DNR, Parks and Recreation Division	Babcock Rd.	Laingsburg	989-224-5200	517-373-9900	6.44

Managed Lands (Cont'd)

#	Name	City	Category	Waterbody	Location	Comments	Area(acres)
1	Rose Lake State	East Lansing	Wildlife Management Area	Mud Creek; Vermilion Creek; Rose L.; Potter L.; Mud L.; Fox Knoll L.; Burke L.	N/A	http://www.michigan.gov/dnr/publications/pdfs/huntingwildlifehabitat/sga/quanicassee.pdf	3,073.94
2	Sleepy Hollow	Laingsburg	State Park	Lake Ovid; Little Maple River	Take US Hwy 27 (just N of I-69) to the Price Road exit. Price Road E (turn right) about 5.5 miles. Park entrance on left (N) side of road.	No Data	2,680.23
3	Maple River	N/A	State Game Area	Maple River; Pine Creek; Hayworth Creek; Ferdon Creek; Colier Creek	Stretches from towns of Hubbardston to Ashley	http://www.michigan.gov/dnr/publications/pdfs/huntingwildlifehabitat/sga/maplervgen.pdf	983.68
4	Muskrat Lake	Dewitt	State Game Area	Muskrat Lake	Off Jason Rd, between Aitport Rd & S Dewitt Rd	http://www.michigan.gov/dnr/publications/pdfs/huntingwildlifehabitat/sga/muskratlk.pdf	211.91
5	Portland	Portland	State Game Area	Grand River; Frayer Creek; Sebewa Creek	Charlotte Hwy, at the Grand River	http://www.michigan.gov/dnr/publications/pdfs/huntingwildlifehabitat/sga/portland.pdf	143.79
6	Babcock Landing	Laingsburg	Access Area	Looking Glass River	East side of Babcock Rd, N of Ballentine Rd	No Data	6.44

Threatened and Endangered Species

#	Species	Status	Habitat	Area(acres)
1	Indiana bat	Endangered	Summer habitat includes small to medium river and stream corridors with well developed riparian woods; woodlots within 1 to 3 miles of small to medium rivers and streams; and upland forests. Caves and mines as hibernacula.	367,716.87
2	Northern long-eared bat	Threatened	Hibernates in caves and mines - swarming in surrounding wooded areas in autumn. Roosts and forages in upland forests during spring and summer.	367,716.87
3	Eastern massasauga	Threatened	No Data	367,716.87
4	Eastern prairie fringed orchid	Threatened	Mesic to wet prairies and meadows	367,716.87

Aboveground Storage Tanks

#	Name	Address	City	Emergency Phone	Contact Phone	Waterbody	Count
1	Marathon - Lansing	6300 W Grand River Ave.	Lansing	877-627-5463	517-321-3445	N/A	1

Aboveground Storage Tanks (Cont'd)

#	Name	City	Products	Oil Volume	Oil Tanks	Comments	Count
1	Marathon - Lansing	Lansing	Gasoline, Distillates, Trans mix, Additives, Ethanol	7970634	17	EPA-FRP-#0500032	1

Hazardous Materials Storage

#	Name	Address	City	Emergency Phone	Emergency Contact	Local Contact	Count
1	Michigan Milk Producers Association	431 W Williams St	Ovid	989-834-2221	Gaspar Calandrino, Plant Engineer	Tom Helms; 989-227-6595	1
2	CPS - 622	1100 North Forest Hill Rd	St Johns	970-356-4400	Carrie Miller, Safety Coordinator	Tom Helms; 989-227-6595	1
3	Mahle Engine Components USA, Inc.	916 West State St	St Johns	423-581-6603	Buffie L. Burns, EHS Coordinator	Tom Helms; 989-227-6595	1
4	St. Johns Wastewater Treatment Facility	950 N. US 27 Business Route	St. Johns	989-224-8944	Steven M. Martin, Wastewater Systems Supv.	Tom Helms; 989-227-6595	1
5	CPS - 879	208 West Railroad St	St Johns	970-685-3300	Carrie Miller, Safety Coordinator	Tom Helms; 989-227-6595	1
6	SCCMUA	3671 West Herbison Rd	Dewitt	517-669-8311	Vern Mckenzie, Process Control Supervisor	Tom Helms; 989-227-6595	1

Hazardous Materials Storage (Cont'd)

#	Name	City	Contact Phone	Materials/CAS	Count
1	Michigan Milk Producers Association	Ovid	989-834-2221	7664417	1
2	CPS - 622	St Johns	989-593-2099	7664417	1
3	Mahle Engine Components USA, Inc.	St Johns	989-224-2384	7664417; 7664939; 7664393	1
4	St. Johns Wastewater Treatment Facility	St. Johns	989-224-8944	7782505	1
5	CPS - 879	St Johns	989-224-3234	1910425	1
6	SCCMUA	Dewitt	517-669-8311	7782505; 7446095	1

Facility Response Plan (FRP) Facilities

#	Name	Address	City	Facility Registry Service Report	Count
1	TOTAL PETROLEUM - LANSING TERMINAL	6300 W GRAND RIVER AVE	LANSING	https://ofmpub.epa.gov/frs_public2/fii_query_detail_disp_program_facility?p_registry_id=110009595973	1
2	LYDEN OIL COMPANY	16275 NATIONAL PARKWAY	LANSING	https://ofmpub.epa.gov/frs_public2/fii_query_detail_disp_program_facility?p_registry_id=110070044611	1

Risk Management Plan (RMP) Facilities

#	Name	Address	City	Facility Registry Service Report	Count
1	MICHIGAN MILK PRODUCERS ASSOCIATION	431 W. WILLIAMS STREET	OVID	https://ofmpub.epa.gov/frs_public2/fii_query_detail_disp_program_facility?p_registry_id=110024424513	1
2	CROP PRODUCTION SERVICES 622	1100 N FOREST HILL RD	SAINT JOHNS	https://ofmpub.epa.gov/frs_public2/fii_query_detail_disp_program_facility?p_registry_id=110031382279	1
3	TOTAL PETROLEUM - LANSING TERMINAL	6300 W GRAND RIVER AVE	LANSING	https://ofmpub.epa.gov/frs_public2/fii_query_detail_disp_program_facility?p_registry_id=110009595973	1

EPLAN/Tier II Facilities

#	Name	Address	City	Facility Registry Service Report	Count
1	MEIJER #209 GAS STATION	12875 S. US-27	DEWITT	https://ofmpub.epa.gov/frs_public2/fii_query_detail_disp_program_facility?p_registry_id=110061810777	1
2	NORTH CENTRAL RESEARCH STATION	5550 N LOWELL RD	ST JOHNS	https://ofmpub.epa.gov/frs_public2/fii_query_detail_disp_program_facility?p_registry_id=110061968688	1
3	FERRELLGAS COMPANY	7777 E OLD M78	EAST LANSING	https://ofmpub.epa.gov/frs_public2/fii_query_detail_disp_program_facility?p_registry_id=110056624201	1
4	SUNBELT RENTALS INC	14485 S US HIGHWAY 27	DEWITT	https://ofmpub.epa.gov/frs_public2/fii_query_detail_disp_program_facility?p_registry_id=110055449162	1
5	AMERIGAS	10972 W GRAND RIVER AVE	GRAND LEDGE	https://ofmpub.epa.gov/frs_public2/fii_query_detail_disp_program_facility?p_registry_id=110062015457	1
6	DRAEXLMAIER OF AMERICA	16325 FELTON ROAD	LANSING	https://ofmpub.epa.gov/frs_public2/fii_query_detail_disp_program_facility?p_registry_id=110062043694	1
7	SPEEDWAY 8855	901 S US 27	ST JOHNS	https://ofmpub.epa.gov/frs_public2/fii_query_detail_disp_program_facility?p_registry_id=110061838864	1
8	EISELER OIL COMPANY - LANSING, MI BRANCH	15714 S US HIGHWAY 27	LANSING	https://ofmpub.epa.gov/frs_public2/fii_query_detail_disp_program_facility?p_registry_id=110045618658	1
9	UNITED PARCEL SERVICE	2517 AIRPORT SERVICE DRIVE	LANSING	https://ofmpub.epa.gov/frs_public2/fii_query_detail_disp_program_facility?p_registry_id=110062043989	1
10	SPEEDWAY 7534	14004 US 27	DEWITT	https://ofmpub.epa.gov/frs_public2/fii_query_detail_disp_program_facility?p_registry_id=110061938774	1
11	GRANGER GRAND RIVER LF	8550 WEST GRAND RIVER HIGHWAY	GRAND LEDGE	https://ofmpub.epa.gov/frs_public2/fii_query_detail_disp_program_facility?p_registry_id=110060478683	1
12	CROP PRODUCTION SERVICES 879	208 W RAILROAD ST	SAINT JOHNS	https://ofmpub.epa.gov/frs_public2/fii_query_detail_disp_program_facility?p_registry_id=110038296046	1

13	MORRIS, DAVID/FARM	15699 WRIGHT RD	GRAND LEDGE	https://ofmpub.epa.gov/frs_public2/fii_query_detail_disp_program_facility?p_registry_id=110061892224	1
14	PHILLIPS, DENNIS/FARM	1174 W GRATIOT RD	ST JOHNS	https://ofmpub.epa.gov/frs_public2/fii_query_detail_disp_program_facility?p_registry_id=110062093336	1
15	SAVE-A-LOT LTD	1701 TECHNICAL DRIVE	ST JOHNS	https://ofmpub.epa.gov/frs_public2/fii_query_detail_disp_program_facility?p_registry_id=110062051390	1
16	SPEEDWAY 8740	13155 N. US 27	DEWITT	https://ofmpub.epa.gov/frs_public2/fii_query_detail_disp_program_facility?p_registry_id=110062064563	1
17	FRONTIER BATH CENTRAL OFFICE	5720 E HIGH ST	BATH	https://ofmpub.epa.gov/frs_public2/fii_query_detail_disp_program_facility?p_registry_id=110061838668	1
18	SCHWANS HOME SERVICE, INC.-104080	360 EAST WALKER RD	ST JOHNS	https://ofmpub.epa.gov/frs_public2/fii_query_detail_disp_program_facility?p_registry_id=110062050391	1
19	WASTEWATER TREATMENT FACILITY	950 N. US 27 BUSINESS ROUTE	ST. JOHNS	https://ofmpub.epa.gov/frs_public2/fii_query_detail_disp_program_facility?p_registry_id=110062057731	1
20	DAL GLOBAL SERVICES, LLC-LAN	4100 CAPITOL CITY BLVD	LANSING	https://ofmpub.epa.gov/frs_public2/fii_query_detail_disp_program_facility?p_registry_id=110062028835	1
21	CELINK	2824 CIRCLE DR	LANSING	https://ofmpub.epa.gov/frs_public2/fii_query_detail_disp_program_facility?p_registry_id=110062001499	1
22	MCI LNNFMI (MILNNFMI)	5688 WEST GRAND RIVER AVENUE	LANSING	https://ofmpub.epa.gov/frs_public2/fii_query_detail_disp_program_facility?p_registry_id=110061852115	1
23	GROVE ROAD - 1	16150 GROVE ROAD	LANSING	https://ofmpub.epa.gov/frs_public2/fii_query_detail_disp_program_facility?p_registry_id=110061975439	1
24	CLARK, LEON P/FARM	10641 CLARK RD	EAGLE	https://ofmpub.epa.gov/frs_public2/fii_query_detail_disp_program_facility?p_registry_id=110061839220	1
25	MARTIN-BROWER	1210 ZEEB DR	SAINT JOHNS	https://ofmpub.epa.gov/frs_public2/fii_query_detail_disp_program_facility?p_registry_id=110062004272	1

26	SMITH OIL CO. INC. & PROPANE	401 E. RAILROAD ST	ST JOHNS	https://ofmpub.epa.gov/frs_public2/fii_query_detail_disp_program_facility?p_registry_id=110061857101	1
27	PURITY CYLINDER GASES INC.	1035 MAK-TECH DRIVE	DEWITT TOWNSHIP	https://ofmpub.epa.gov/frs_public2/fii_query_detail_disp_program_facility?p_registry_id=110061810866	1
28	JOHN HENRY CO, THE	5800 W GRAND RIVER AVE	LANSING	https://ofmpub.epa.gov/frs_public2/fii_query_detail_disp_program_facility?p_registry_id=110001847823	1
29	BAIRD WILL FARM	2273 EAST HOWE RD	DEWITT	https://ofmpub.epa.gov/frs_public2/fii_query_detail_disp_program_facility?p_registry_id=110062058598	1
30	WILBUR-ELLIS COMPANY-PEWAMO	11374 E. BLUWATER HWY	PEWAMO	https://ofmpub.epa.gov/frs_public2/fii_query_detail_disp_program_facility?p_registry_id=110061839328	1
31	AVIS RENT A CAR SYSTEM, LLC - CAPITAL REGION INT'L AIRPORT	3701 WACO BLVD.	LANSING	https://ofmpub.epa.gov/frs_public2/fii_query_detail_disp_program_facility?p_registry_id=110061890191	1
32	ROBERT BOETTGER FARM	6748 WEST WALKER RD	ST JOHNS	https://ofmpub.epa.gov/frs_public2/fii_query_detail_disp_program_facility?p_registry_id=110062094852	1
33	SCCMUA	3671 WEST HERBISON RD	DEWITT	https://ofmpub.epa.gov/frs_public2/fii_query_detail_disp_program_facility?p_registry_id=110062088663	1
34	WOLVERINE PIPE LINE COMPANY	6484 W TOWNSEND RD	SAINT JOHNS	https://ofmpub.epa.gov/frs_public2/fii_query_detail_disp_program_facility?p_registry_id=110008443158	1
35	SPEEDWAY 7190	7765 EAST M78	EAST LANSING	https://ofmpub.epa.gov/frs_public2/fii_query_detail_disp_program_facility?p_registry_id=110062001836	1
36	AVFLIGHT LANSING	3121 W CIRCLE DR	LANSING	https://ofmpub.epa.gov/frs_public2/fii_query_detail_disp_program_facility?p_registry_id=110008444987	1
37	MICHIGAN MILK PRODUCERS ASSOCIATION	431 W. WILLIAMS STREET	OVID	https://ofmpub.epa.gov/frs_public2/fii_query_detail_disp_program_facility?p_registry_id=110024424513	1
38	20W0	3751 WACO DR	LANSING	https://ofmpub.epa.gov/frs_public2/fii_query_detail_disp_program_facility?p_registry_id=110061809093	1

39	BUDGET RENT A CAR SYSTEM, INC. - CAPITAL REGION INT'L AIRPORT	3750 WACO BLVD.	LANSING	https://ofmpub.epa.gov/frs_public2/fii_query_detail_disp_program_facility?p_registry_id=110061944801	1
40	FLYING J TRAVEL PLAZA	7800 W GRAND AVE	GRAND LEDGE	https://ofmpub.epa.gov/frs_public2/fii_query_detail_disp_program_facility?p_registry_id=110037243578	1
41	MEIJER STORE #253	7157 E. SAGINAW ST.	EAST LANSING	https://ofmpub.epa.gov/frs_public2/fii_query_detail_disp_program_facility?p_registry_id=110062110095	1
42	MPM, SPARTAN ASPHALT	16777 WOOD ST.	LANSING	https://ofmpub.epa.gov/frs_public2/fii_query_detail_disp_program_facility?p_registry_id=110062095067	1
43	WASTE MANAGEMENT OF MICHIGAN LANSING	16320 GROVE RD	LANSING	https://ofmpub.epa.gov/frs_public2/fii_query_detail_disp_program_facility?p_registry_id=110006412202	1
44	4540 HAWK HOLLOW DRIVE EAST	4540 HAWK HOLLOW DRIVE EAST	BATH	https://ofmpub.epa.gov/frs_public2/fii_query_detail_disp_program_facility?p_registry_id=110062022671	1
45	CAPITAL REGION INTERNATIONAL AIRPORT	3168 W. STATE ROAD	LANSING	https://ofmpub.epa.gov/frs_public2/fii_query_detail_disp_program_facility?p_registry_id=110061951785	1
46	MAHLE ENGINE COMPONENTS USA, INC.	916 WEST STATE STREET	SAINT JOHNS	https://ofmpub.epa.gov/frs_public2/fii_query_detail_disp_program_facility?p_registry_id=110009596678	1
47	CROP PRODUCTION SERVICES 622	1100 N FOREST HILL RD	SAINT JOHNS	https://ofmpub.epa.gov/frs_public2/fii_query_detail_disp_program_facility?p_registry_id=110031382279	1
48	LANSING	16350 FELTON RD	LANSING	https://ofmpub.epa.gov/frs_public2/fii_query_detail_disp_program_facility?p_registry_id=110061803641	1
49	FRONTIER ST. JOHN'S CENTRAL OFF	202 EAST STATE STREET	ST JOHNS	https://ofmpub.epa.gov/frs_public2/fii_query_detail_disp_program_facility?p_registry_id=110061890510	1
50	FRONTIER DEWITT CENTRAL OFFICE	125 W MAIN ST	DEWITT	https://ofmpub.epa.gov/frs_public2/fii_query_detail_disp_program_facility?p_registry_id=110061903187	1
51	LANSING MI TERMINAL	6300 WEST GRAND RIVER AVE	LANSING	https://ofmpub.epa.gov/frs_public2/fii_query_detail_disp_program_facility?p_registry_id=110061990378	1

Railroads

#	Railroad	Emergency Phone	Contact Phone	Class	Length(mi)
1	CSX Transportation	800-232-0144	904-359-3100	1	6.31
2	Tuscola & Saginaw Bay Railway	No Data	No Data	No Data	2.91

Petroleum Pipelines

#	Name	System	Emergency Phone	Contact Phone	Length(mi)
1	Wolverine Pipe Line Co.	Stockbridge to Lapaugh	888-337-5004	269-323-2491	18.72
2	Wolverine Pipe Line Co.	Lapaugh to Lansing	888-337-5004	269-323-2491	14.46
3	Wolverine Pipe Line Co.	Lapaugh to Alma	888-337-5004	269-323-2491	9.05

Oil and Natural Gas Pipelines

#	Name	System	Description	Length(mi)
1	Consumers Energy Co.	Transmission Pipeline	Natural Gas Pipeline	71.65
2	Consumers Energy Co.	No Data	Natural Gas Pipeline	28.20
3	Wolverine Pipe Line Co.	Stokbridge To Lapaugh	Refined Petroleum Pipeline	19.00
4	Consumers Energy Co.	Distribution Pipeline	Natural Gas Pipeline	16.91
5	Michigan Consolidated Gas Co.	Southeast	Natural Gas Pipeline	16.03
6	Wolverine Pipe Line Co.	Lapaugh To Lansing	Refined Petroleum Pipeline	14.54
7	Wolverine Pipe Line Co.	Lapaugh To Alma	Refined Petroleum Pipeline	9.20
8	Michigan Consolidated Gas Co.	Central	Natural Gas Pipeline	8.01

Boat Access

#	Name	Operator	Waterbody	Latitude	Longitude	Count
1	French Road	Flat River FO	Maple River	43.0625	-84.8279999974668	1
2	Looking Glass River	Sleepy Hollow SP	Looking Glass River	42.86930000036955	-84.45249999966472	1
3	Park Lake	Bath TWP	Park Lake	42.79260000027716	-84.43769999966025	1
4	Sleepy Hollow SP	Sleepy Hollow SP	Lake Ovid	42.9320000000298	-84.41720000002533	1
5	Muskrat Lake	Sleepy Hollow SP	Muskrat Lake	42.91410000063479	-84.5906999995932	1
6	Fitzpatrick Road	Maple River SGA	Maple River	43.089299999177456	-84.7597000002861	1

Non-navigational Dams

#	Name	Latitude	Longitude	Count
1	Lake Victoria Dam	42.96169999986887	-84.375	1
2	Elsie Dam	43.10830000042915	-84.40000000037253	1
3	Sleepy Hollow Dam	42.94669999927282	-84.41830000001937	1
4	Lake Of The Hills Dam	42.783299999311566	-84.38329999987036	1
5	Lake Geneva Dam	42.833300000056624	-84.58330000005662	1
6	SMITHVILLE	42.83999999985099	-84.62999999988824	1

Rivers and Streams

#	Name	Feature	Length(mi)
1	Looking Glass River	Stream	32.90
2	Maple River	Stream	26.16
3	Stony Creek	Stream	19.92
4	<i>No Data</i>	Stream	14.15
5	Hayworth Creek	Stream	13.64
6	Little Maple River	Stream	12.22
7	Holden Drain	Stream Intermittent	7.79
8	Grand River	Stream	6.56
9	Alder Creek	Stream	6.14
10	Muskrat Creek	Stream	5.32
11	Hayworth Creek	Stream Intermittent	5.11
12	<i>No Data</i>	Stream Intermittent	4.50
13	Vermilion Creek	Stream	3.89
14	Stony Creek	Stream Intermittent	3.85
15	Little Maple River	Stream Intermittent	1.82
16	Looking Glass River	Stream Intermittent	1.78
17	Muskrat Creek	Stream Intermittent	1.75
18	Little Maple River	Artificial Path	1.66
19	Alder Creek	Stream Intermittent	1.43
20	Tibbetts Drain	Stream	1.28
21	Maple River	Stream Intermittent	1.12
22	Pine Creek	Stream	0.64

Lakes and Ponds

#	Name	Description	Area(acres)
1	No Data	Lake/Pond: Hydrographic Category = Perennial	659.83
2	Lake Ovid	Lake/Pond: Hydrographic Category = Perennial	364.27
3	Park Lake	Lake/Pond: Hydrographic Category = Perennial	178.18
4	Lake Victoria	Lake/Pond: Hydrographic Category = Perennial	141.14
5	Round Lake	Lake/Pond: Hydrographic Category = Perennial	85.76
6	No Data	Reservoir; Reservoir Type = Treatment	62.14
7	Geneva, Lake	Lake/Pond: Hydrographic Category = Perennial	58.74
8	Muskrat Lake	Lake/Pond: Hydrographic Category = Perennial	44.75
9	Perch Lake	Lake/Pond: Hydrographic Category = Perennial	35.47
10	Rose Lake	Lake/Pond: Hydrographic Category = Perennial	32.80
11	Mud Lake	Lake/Pond: Hydrographic Category = Perennial	25.08
12	Alward Lake	Lake/Pond: Hydrographic Category = Perennial	21.97
13	Potter Lake	Lake/Pond: Hydrographic Category = Perennial	20.96
14	Blood Lake	Lake/Pond: Hydrographic Category = Perennial	16.15
15	No Data	Lake/Pond: Hydrographic Category = Intermittent	12.01
16	Curtis Lake	Lake/Pond: Hydrographic Category = Perennial	10.86
17	Whitman Lake	Lake/Pond: Hydrographic Category = Perennial	10.45
18	Aldrich Lake	Lake/Pond: Hydrographic Category = Perennial	8.72
19	Fox Knoll Lake	Lake/Pond: Hydrographic Category = Perennial	7.94