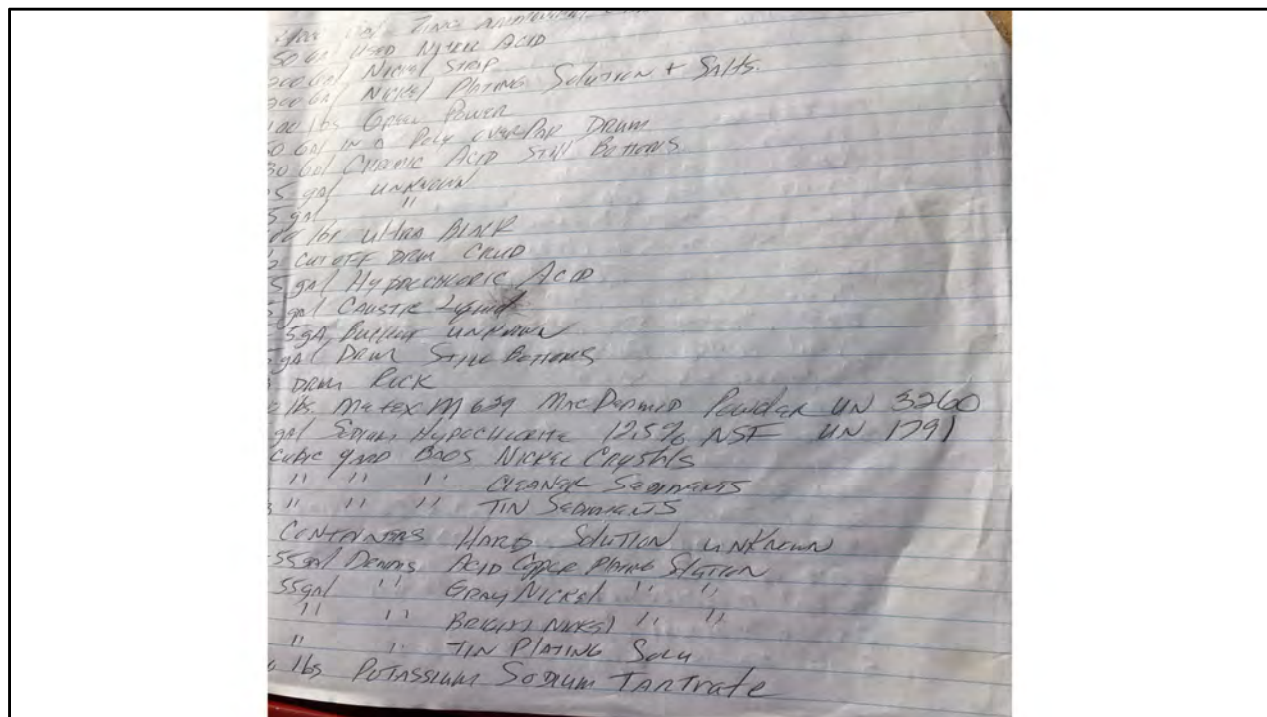


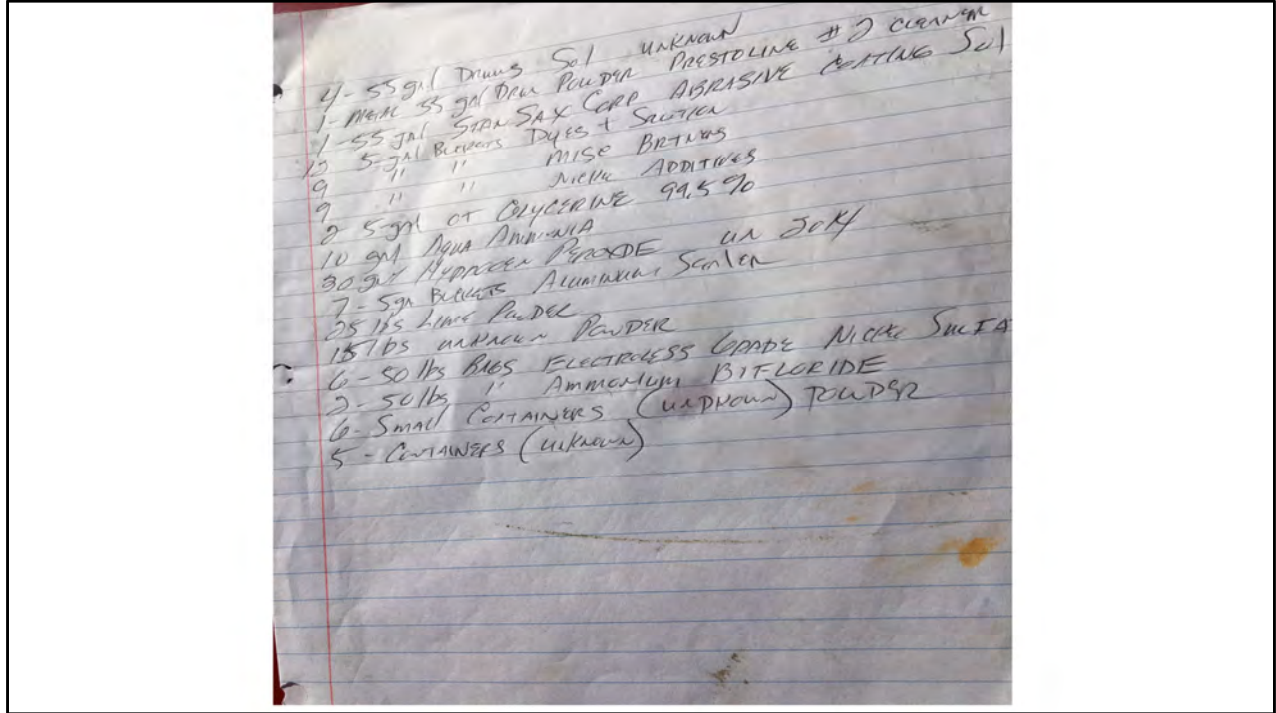
10/5/2020 CEI AI# 3106
Livermore Industrial Plating

by Scott, Curtis (EEC)

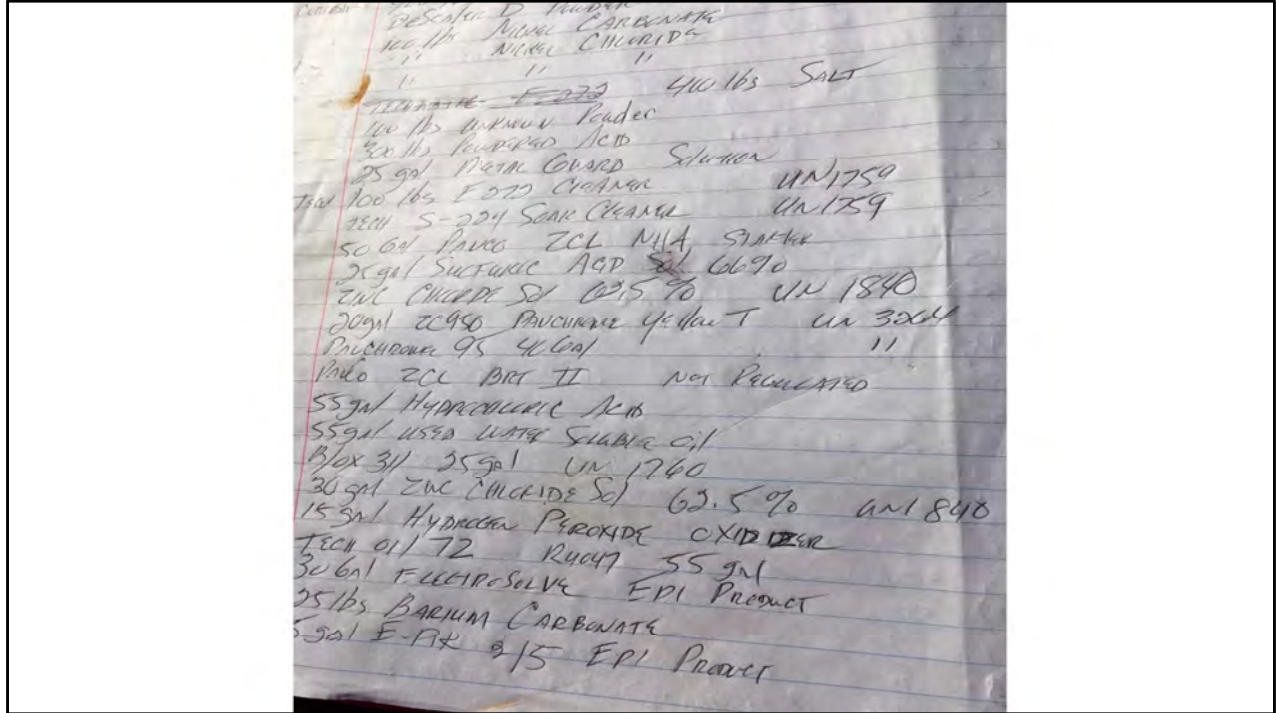
Unregistered site



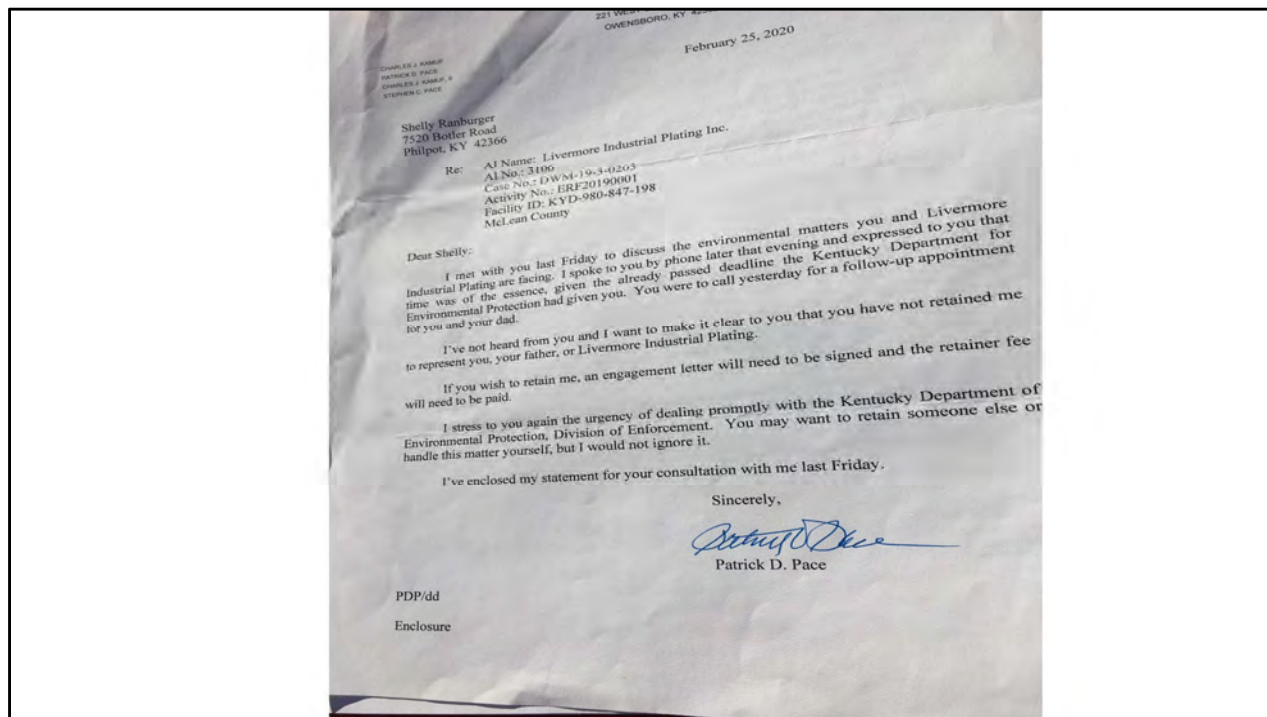
CCS, 10/5/2020, CEI AI# 3106, Livermore Industrial Plating: Site photo. A partial list of material located on-site (prepared by the facility)



CCS, 10/5/2020, CEI AI# 3106, Livermore Industrial Plating: Site photo. A partial list of material located on-site (prepared by the facility)



CCS, 10/5/2020, CEI AI# 3106, Livermore Industrial Plating: Site photo. A partial list of material located on-site (prepared by the facility)



CCS, 10/5/2020, CEI AI# 3106, Livermore Industrial Plating: Site photo.



CCS, 10/5/2020, CEI AI# 3106, Livermore Industrial Plating: Site photo. Empty dip tanks.



CCS, 10/5/2020, CEI AI# 3106, Livermore Industrial Plating: Site photo. Empty drums



CCS, 10/5/2020, CEI AI# 3106, Livermore Industrial Plating: Site photo. Empty drums



CCS, 10/5/2020, CEI AI# 3106, Livermore Industrial Plating: Site photo. The facility claims product status for all material.



CCS, 10/5/2020, CEI AI# 3106, Livermore Industrial Plating: Site photo. The facility claims product status for all material.



CCS, 10/5/2020, CEI AI# 3106, Livermore Industrial Plating: Site photo. The facility claims product status for all material.



CCS, 10/5/2020, CEI AI# 3106, Livermore Industrial Plating: Site photo. The facility claims product status for all material. Floor is designed to drain to a sump then WWT operation. Sump and associated trenches are filled with liquid (reported to be rain water). Liquid stands on floor.



CCS, 10/5/2020, CEI AI# 3106, Livermore Industrial Plating: Site photo. The facility claims product status for all material. Floor is designed to drain to a sump then WWT operation. Sump and associated trenches are filled with liquid (reported to be rain water). Liquid stands on floor.



CCS, 10/5/2020, CEI AI# 3106, Livermore Industrial Plating: Site photo. The facility claims product status for all material. Floor is designed to drain to a sump then WWT operation. Sump and associated trenches are filled with liquid (reported to be rain water). Liquid stands on floor.



CCS, 10/5/2020, CEI AI# 3106, Livermore Industrial Plating: Site photo. The facility claims product status for all material. Floor is designed to drain to a sump then WWT operation. Sump and associated trenches are filled with liquid (reported to be rain water). Liquid stands on floor.



CCS, 10/5/2020, CEI AI# 3106, Livermore Industrial Plating: Site photo. The facility claims product status for all material. Floor is designed to drain to a sump then WWT operation. Sump and associated trenches are filled with liquid (reported to be rain water). Liquid stands on floor. This dip tank is about to run over. It is staged under a leaking roof. Zinc plating solution



CCS, 10/5/2020, CEI AI# 3106, Livermore Industrial Plating: Site photo. The facility claims product status for all material. Floor is designed to drain to a sump then WWT operation. Sump and associated trenches are filled with liquid (reported to be rain water). Liquid stands on floor. This dip tank is about to run over. It is staged under a leaking roof. Zinc plating solution



CCS, 10/5/2020, CEI AI# 3106, Livermore Industrial Plating: Site photo. Roof over dip tank (of zinc solution)



CCS, 10/5/2020, CEI AI# 3106, Livermore Industrial Plating: Site photo. The facility claims product status for all material. Floor is designed to drain to a sump then WWT operation. Sump and associated trenches are filled with liquid (reported to be rain water). Liquid stands on floor. Full tank (zinc plating solution)



CCS, 10/5/2020, CEI AI# 3106, Livermore Industrial Plating: Site photo. The facility claims product status for all material. Floor is designed to drain to a sump then WWT operation. Sump and associated trenches are filled with liquid (reported to be rain water). Liquid stands on floor.



CCS, 10/5/2020, CEI AI# 3106, Livermore Industrial Plating: Site photo. The facility claims product status for all material. Floor is designed to drain to a sump then WWT operation. Sump and associated trenches are filled with liquid (reported to be rain water). Liquid stands on floor.



CCS, 10/5/2020, CEI AI# 3106, Livermore Industrial Plating: Site photo. The facility claims product status for all material. Floor is designed to drain to a sump then WWT operation. Sump and associated trenches are filled with liquid (reported to be rain water). Liquid stands on floor.



CCS, 10/5/2020, CEI AI# 3106, Livermore Industrial Plating: Site photo. The facility claims product status for all material. Floor is designed to drain to a sump then WWT operation. Sump and associated trenches are filled with liquid (reported to be rain water). Liquid stands on floor. The upside down containers are empty.



CCS, 10/5/2020, CEI AI# 3106, Livermore Industrial Plating: Site photo. The facility claims product status for all material. Floor is designed to drain to a sump then WWT operation. Sump and associated trenches are filled with liquid (reported to be rain water). Liquid stands on floor.



CCS, 10/5/2020, CEI AI# 3106, Livermore Industrial Plating: Site photo. The facility claims product status for all material.



CCS, 10/5/2020, CEI AI# 3106, Livermore Industrial Plating: Site photo. The facility claims product status for all material. Floor is designed to drain to a sump then WWT operation. Sump and associated trenches are filled with liquid (reported to be rain water). Liquid stands on floor.



CCS, 10/5/2020, CEI AI# 3106, Livermore Industrial Plating: Site photo. The facility claims product status for all material.



CCS, 10/5/2020, CEI AI# 3106, Livermore Industrial Plating: Site photo. The facility claims product status for all material in dip tank. This is nickel plating solution.



CCS, 10/5/2020, CEI AI# 3106, Livermore Industrial Plating: Site photo. The facility claims product status for all material in dip tank. This is nickel plating solution.



CCS, 10/5/2020, CEI AI# 3106, Livermore Industrial Plating: Site photo. The facility claims product status for all material in dip tank. This is nickel plating solution.



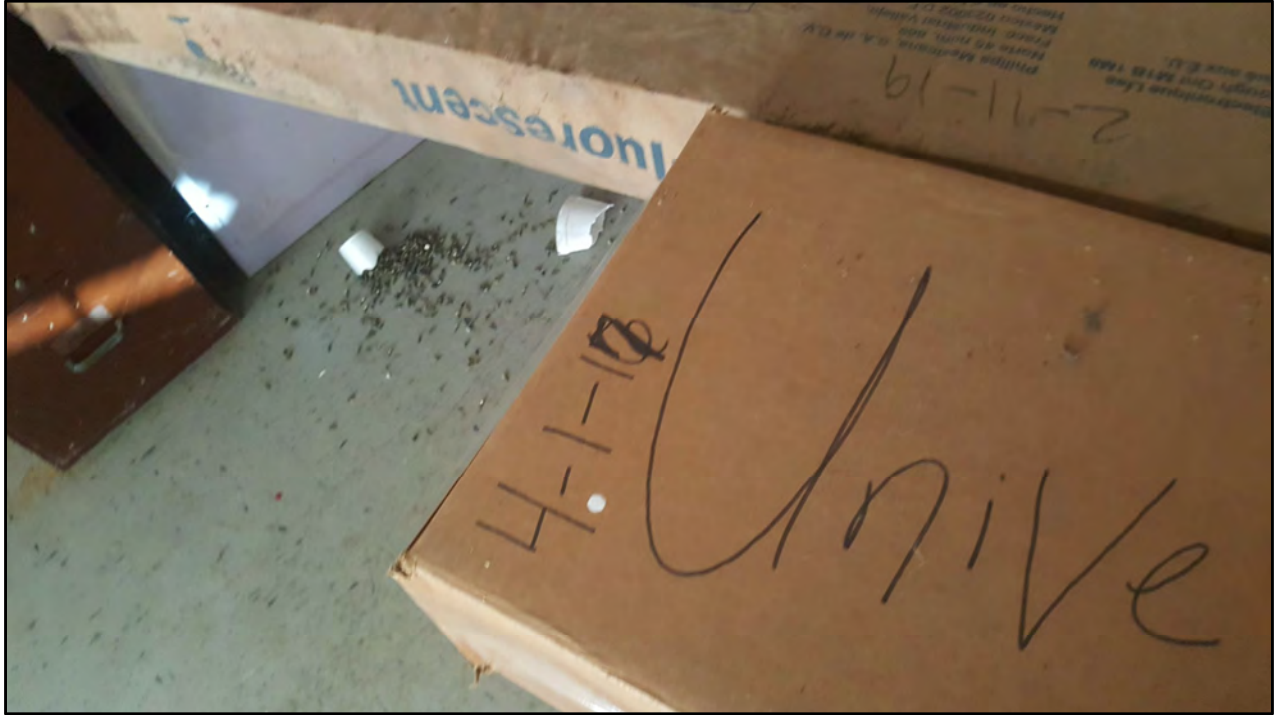
CCS, 10/5/2020, CEI AI# 3106, Livermore Industrial Plating: Site photo. The facility claims product status for all material in dip tank. This is nickel plating solution.



CCS, 10/5/2020, CEI AI# 3106, Livermore Industrial Plating: Site photo. The facility claims product status for all material.



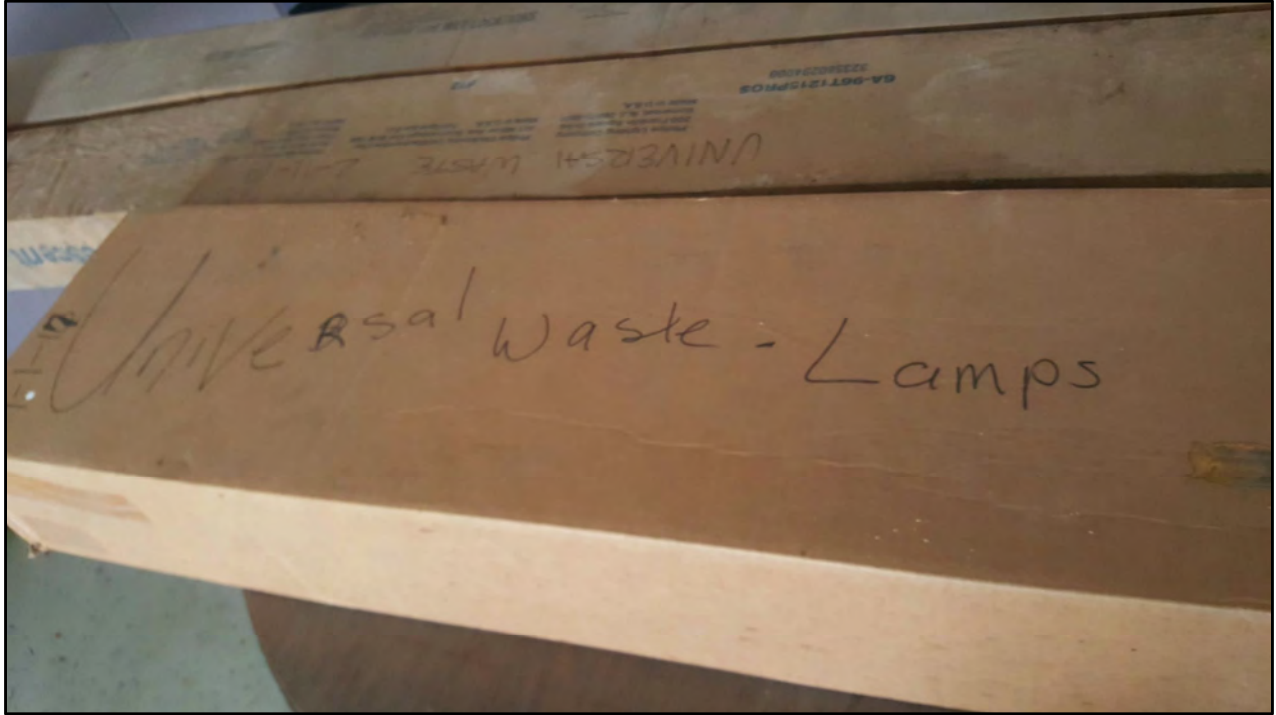
CCS, 10/5/2020, CEI AI# 3106, Livermore Industrial Plating: Site photo.



CCS, 10/5/2020, CEI AI# 3106, Livermore Industrial Plating: Universal Waste exceeds one year.



CCS, 10/5/2020, CEI AI# 3106, Livermore Industrial Plating: Universal Waste exceeds one year.



CCS, 10/5/2020, CEI AI# 3106, Livermore Industrial Plating: Universal Waste exceeds one year.