

# Air Monitoring Summary Tables

The tables below summarize preliminary air monitoring data collected using EPA AreaRAE Pro and DustTrak DRX instruments.

**Project Name:** Rockton Chemtool Fire ER  
**Date/Time:** 06/21/21 15:12 to 06/22/21 04:40

## Weather

**Temperature:** high of 68°F, low of 46°F  
**Wind Speed:** 0 to 9 miles per hour  
**Wind Direction:** North/Northwest  
**Conditions:** Partly Cloudy

Fixed Station #4: Corner of Union and Ferry						
Instrument	Analyte	Chemtool Public Health Screening Level <sup>1</sup>	Public Health Screening Level Exceeded?	Number of 1-Hour Periods	1-Hour Period Concentration Range	Average of All 1-Hour Periods
<b>DustTrak (S/N: 4304)</b>	PM <sub>2.5</sub> (mg/m <sup>3</sup> )	0.025 mg/m <sup>3</sup>	No	12	0.002 to 0.005	0.003
	PM <sub>10</sub> (mg/m <sup>3</sup> )	0.05 mg/m <sup>3</sup>	No	12	0.002 to 0.005	0.003
<b>AreaRAE Pro (S/N: 2172)</b>	VOC (ppm)	1 ppm	No	14	0.00 to 0.00	0.00
	CO (ppm)	--	No	14	0.0 to 0.1	0.0
	O <sub>2</sub> (%)	--	No	14	20.9 to 20.9	20.9
	H <sub>2</sub> S (ppm)	0.1 ppm	No	14	0.0 to 0.0	0.0
	HCN (ppm)	1 ppm	Yes	14	0.0 to 1.1	0.2

Fixed Station #5: Stand alone area near stop sign on Chapel and Bridge St						
Instrument	Analyte	Chemtool Public Health Screening Level <sup>1</sup>	Public Health Screening Level Exceeded?	Number of 1-Hour Periods	1-Hour Period Concentration Range	Average of All 1-Hour Periods
<b>AreaRAE Pro (S/N: 0640)</b>	VOC (ppm)	1 ppm	No	11	0.00 to 0.10	0.05
	CO (ppm)	--	No	11	0.0 to 0.0	0.0
	O <sub>2</sub> (%)	--	No	11	20.9 to 20.9	20.9
	H <sub>2</sub> S (ppm)	0.1 ppm	No	11	0.0 to 0.0	0.0
	HCN (ppm)	1 ppm	Yes	11	0.0 to 1.6	0.5

Fixed Station #6: Corner of Union and Chapel						
Instrument	Analyte	Chemtool Public Health Screening Level <sup>1</sup>	Public Health Screening Level Exceeded?	Number of 1-Hour Periods	1-Hour Period Concentration Range	Average of All 1-Hour Periods
<b>DustTrak (S/N: 3911)</b>	PM <sub>2.5</sub> (mg/m <sup>3</sup> )	0.025 mg/m <sup>3</sup>	No	11	0.002 to 0.004	0.004
	PM <sub>10</sub> (mg/m <sup>3</sup> )	0.05 mg/m <sup>3</sup>	No	11	0.003 to 0.004	0.004
<b>AreaRAE Pro (S/N: 0643)</b>	VOC (ppm)	1 ppm	No	13	0.00 to 0.00	0.00
	CO (ppm)	--	No	13	0.0 to 0.1	0.0
	O <sub>2</sub> (%)	--	No	13	20.9 to 21.3	21.0
	H <sub>2</sub> S (ppm)	0.1 ppm	No	13	0.0 to 0.0	0.0
	HCN (ppm)	1 ppm	No	13	0.0 to 0.2	0.0

Fixed Station #13: North Residential - North						
Instrument	Analyte	Chemtool Public Health Screening Level <sup>1</sup>	Public Health Screening Level Exceeded?	Number of 1-Hour Periods	1-Hour Period Concentration Range	Average of All 1-Hour Periods
<b>AreaRAE Pro (S/N: 2412)</b>	VOC (ppm)	1 ppm	No	11	0.02 to 0.08	0.05
	CO (ppm)	--	No	11	0.0 to 0.0	0.0
	O <sub>2</sub> (%)	--	No	11	20.9 to 20.9	20.9
	H <sub>2</sub> S (ppm)	0.1 ppm	No	11	0.0 to 0.0	0.0
	HCN (ppm)	1 ppm	No	11	0.0 to 0.0	0.0

# Air Monitoring Summary Tables

The tables below summarize preliminary air monitoring data collected using EPA AreaRAE Pro and DustTrak DRX instruments.

**Project Name:** Rockton Chemtool Fire ER  
**Date/Time:** 06/21/21 15:12 to 06/22/21 04:40

## Weather

**Temperature:** high of 68°F, low of 46°F  
**Wind Speed:** 0 to 9 miles per hour  
**Wind Direction:** North/Northwest  
**Conditions:** Partly Cloudy

Fixed Station #14: North Residential - East						
Instrument	Analyte	Chemtool Public Health Screening Level <sup>1</sup>	Public Health Screening Level Exceeded?	Number of 1-Hour Periods	1-Hour Period Concentration Range	Average of All 1-Hour Periods
AreaRAE Pro (S/N: 2413)	VOC (ppm)	1 ppm	No	11	0.00 to 0.05	0.01
	CO (ppm)	--	No	11	0.0 to 0.0	0.0
	O <sub>2</sub> (%)	--	No	11	20.9 to 20.9	20.9
	H <sub>2</sub> S (ppm)	0.1 ppm	No	11	0.0 to 0.0	0.0
	HCN (ppm)	1 ppm	No	11	0.0 to 0.1	0.0

#15: North Residential - South						
Instrument	Analyte	Chemtool Public Health Screening Level <sup>1</sup>	Public Health Screening Level Exceeded?	Number of 1-Hour Periods	1-Hour Period Concentration Range	Average of All 1-Hour Periods
AreaRAE Pro (S/N: 2411)	VOC (ppm)	1 ppm	No	9	0.00 to 0.17	0.09
	CO (ppm)	--	No	9	0.0 to 0.0	0.0
	O <sub>2</sub> (%)	--	No	9	20.7 to 20.9	20.9
	H <sub>2</sub> S (ppm)	0.1 ppm	No	9	0.0 to 0.0	0.0
	HCN (ppm)	1 ppm	No	9	0.0 to 0.0	0.0

Station #16: North Residential - West						
Instrument	Analyte	Chemtool Public Health Screening Level <sup>1</sup>	Public Health Screening Level Exceeded?	Number of 1-Hour Periods	1-Hour Period Concentration Range	Average of All 1-Hour Periods
AreaRAE Pro (S/N: 2410)	VOC (ppm)	1 ppm	No	7	0.00 to 0.00	0.00
	CO (ppm)	--	No	7	0.0 to 0.0	0.0
	O <sub>2</sub> (%)	--	No	7	20.0 to 23.1	21.6
	H <sub>2</sub> S (ppm)	0.1 ppm	No	7	0.0 to 0.0	0.0

Fixed Station #17: Northeast Residential - West						
Instrument	Analyte	Chemtool Public Health Screening Level <sup>1</sup>	Public Health Screening Level Exceeded?	Number of 1-Hour Periods	1-Hour Period Concentration Range	Average of All 1-Hour Periods
DustTrak (S/N: 3913)	PM <sub>2.5</sub> (mg/m <sup>3</sup> )	0.025 mg/m <sup>3</sup>	No	12	0.000 to 0.002	0.001
	PM <sub>10</sub> (mg/m <sup>3</sup> )	0.05 mg/m <sup>3</sup>	No	12	0.001 to 0.003	0.002
AreaRAE Pro (S/N: 2168)	VOC (ppm)	1 ppm	No	11	0.00 to 0.00	0.00
	CO (ppm)	--	No	11	0.0 to 0.1	0.0
	O <sub>2</sub> (%)	--	No	11	20.6 to 20.9	20.9
	H <sub>2</sub> S (ppm)	0.1 ppm	No	11	0.0 to 0.0	0.0
	HCN (ppm)	1 ppm	No	11	0.0 to 0.0	0.0

## Air Monitoring Summary Tables

The tables below summarize preliminary air monitoring data collected using EPA AreaRAE Pro and DustTrak DRX instruments.

**Project Name:** Rockton Chemtool Fire ER  
**Date/Time:** 06/21/21 15:12 to 06/22/21 04:40

## Weather

**Temperature:** high of 68°F, low of 46°F

**Wind Speed:** 0 to 9 miles per hour

**Wind Direction:** North/Northwest

**Conditions:** Partly Cloudy

Fixed Station #18: Northeast Residential - East						
Instrument	Analyte	Chemtool Public Health Screening	Public Health Screening Level	Number of 1-Hour Periods	1-Hour Period Concentration	Average of All 1-Hour Periods
DustTrak (S/N: 4006)	PM <sub>2.5</sub> (mg/m <sup>3</sup> )	0.025 mg/m <sup>3</sup>	No	12	0.002 to 0.007	0.004
	PM <sub>10</sub> (mg/m <sup>3</sup> )	0.05 mg/m <sup>3</sup>	No	12	0.002 to 0.007	0.005
AreaRAE Pro (S/N: 0642)	VOC (ppm)	1 ppm	No	11	0.12 to 0.32	0.24
	CO (ppm)	--	No	11	0.0 to 0.1	0.0
	O <sub>2</sub> (%)	--	No	11	20.9 to 20.9	20.9
	H <sub>2</sub> S (ppm)	0.1 ppm	No	11	0.0 to 0.0	0.0
	HCN (ppm)	1 ppm	No	11	0.0 to 0.0	0.0

Fixed Station #19: Northeast Residential - South						
Instrument	Analyte	Chemtool Public Health Screening Level <sup>1</sup>	Public Health Screening Level Exceeded?	Number of 1-Hour Periods	1-Hour Period Concentration Range	Average of All 1-Hour Periods
DustTrak (S/N: 4307)	PM <sub>2.5</sub> (mg/m <sup>3</sup> )	0.025 mg/m <sup>3</sup>	No	10	0.001 to 0.007	0.002
	PM <sub>10</sub> (mg/m <sup>3</sup> )	0.05 mg/m <sup>3</sup>	No	10	0.001 to 0.008	0.003
AreaRAE Pro (S/N: 2169)	VOC (ppm)	1 ppm	No	12	0.00 to 0.00	0.00
	CO (ppm)	--	No	12	0.0 to 1.0	0.1
	O <sub>2</sub> (%)	--	No	12	20.9 to 20.9	20.9
	H <sub>2</sub> S (ppm)	0.1 ppm	No	12	0.0 to 0.0	0.0
	HCN (ppm)	1 ppm	No	12	0.0 to 0.0	0.0

Comments
Air monitoring measurements have been averaged over a 1-hour time period and summarized above.
Start and stop times for each air monitoring instrument varies. The monitoring period is based on the earliest start time and latest stop time out of all units.
Air monitoring was not performed during inclement weather conditions/rain and thunderstorms.
1 - Chemtool Public Health Screening Levels are based on 1-hour time-weighted averages and were established by ATSDR
<b>Notes:</b> CO - Carbon Monoxide H2S - Hydrogen Sulfide O2 - Oxygen ppm - Parts per million VOC - Volatile organic compounds

## Air Monitoring Summary Tables

The tables below summarize preliminary air monitoring data collected using Handheld DustTrak, SPM Flex, and MultiRAE Pro instruments.

**Project Name:** Rockton Chemtool Fire ER

**Date/Time:** 06/21/21 15:12 to 06/22/21 04:40

### Weather

**Temperature:** high of 68°F, low of 46°F

**Wind Speed:** 0 to 9 miles per hour

**Wind Direction:** North/Northwest

**Conditions:** Partly Cloudy

**Date/Time:** 6/21/2021 18:23 to 6/22/2021 05:49

Fixed Discrete Air Monitoring Location EZ-01: 1101-1159 Innovation Dr					
Instrument	Analyte	Chemtool Public Health Screening Level <sup>1</sup>	Public Health Screening Level Exceeded?	Number of Measurements	Concentration Range
MultiRAE Pro	H <sub>2</sub> S (ppm)	0.1 ppm	No	7	0.000 to 0.000
	HCN	1 ppm	No	7	0.000 to 0.000
	VOC (ppm)	1 ppm	No	7	0.000 to 0.000
SPM Flex	MDI (ppb)	5 ppb	No	7	0.000 to 0.000
	SO <sub>2</sub> (ppb)	0.2 ppm	No	7	0.000 to 0.000
Handheld DustTrak	PM <sub>2.5</sub> (mg/m <sup>3</sup> )	0.025 mg/m <sup>3</sup>	No	7	0.001 to 0.009
	PM <sub>10</sub> (mg/m <sup>3</sup> )	0.05 mg/m <sup>3</sup>	No	7	0.008 to 0.030

Fixed Discrete Air Monitoring Location EZ-03: 860-998 N Prairie St					
Instrument	Analyte	Chemtool Public Health Screening Level <sup>1</sup>	Public Health Screening Level Exceeded?	Number of Measurements	Concentration Range
MultiRAE Pro	H <sub>2</sub> S (ppm)	0.1 ppm	No	7	0.000 to 0.000
	HCN	1 ppm	No	7	0.000 to 0.000
	VOC (ppm)	1 ppm	No	7	0.000 to 0.000
SPM Flex	MDI (ppb)	5 ppb	No	7	0.000 to 0.000
	SO <sub>2</sub> (ppb)	0.2 ppm	No	7	0.000 to 0.000
Handheld DustTrak	PM <sub>2.5</sub> (mg/m <sup>3</sup> )	0.025 mg/m <sup>3</sup>	No	7	0.001 to 0.003
	PM <sub>10</sub> (mg/m <sup>3</sup> )	0.05 mg/m <sup>3</sup>	No	7	0.002 to 0.005

Fixed Discrete Air Monitoring Location EZ-05: 907-1099 Watts Ave					
Instrument	Analyte	Chemtool Public Health Screening Level <sup>1</sup>	Public Health Screening Level Exceeded?	Number of Measurements	Concentration Range
MultiRAE Pro	H <sub>2</sub> S (ppm)	0.1 ppm	No	7	0.000 to 0.000
	HCN	1 ppm	No	7	0.000 to 0.000
	VOC (ppm)	1 ppm	No	7	0.000 to 0.000
SPM Flex	MDI (ppb)	5 ppb	No	7	0.000 to 0.000
	SO <sub>2</sub> (ppb)	0.2 ppm	No	7	0.000 to 0.000
Handheld DustTrak	PM <sub>2.5</sub> (mg/m <sup>3</sup> )	0.025 mg/m <sup>3</sup>	No	7	0.002 to 0.005
	PM <sub>10</sub> (mg/m <sup>3</sup> )	0.05 mg/m <sup>3</sup>	No	7	0.002 to 0.040

## Air Monitoring Summary Tables

The tables below summarize preliminary air monitoring data collected using Handheld DustTrak, SPM Flex, and MultiRAE Pro instruments.

**Project Name:** Rockton Chemtool Fire ER  
**Date/Time:** 06/21/21 15:12 to 06/22/21 04:40

### Weather

**Temperature:** high of 68°F, low of 46°F  
**Wind Speed:** 0 to 9 miles per hour  
**Wind Direction:** North/Northwest  
**Conditions:** Partly Cloudy

**Date/Time:** 6/21/2021 18:23 to 6/22/2021 05:49

Fixed Discrete Air Monitoring Location EZ-06: 14632 S Bluff Rd					
Instrument	Analyte	Chemtool Public Health Screening Level <sup>1</sup>	Public Health Screening Level Exceeded?	Number of Measurements	Concentration Range
MultiRAE Pro	H <sub>2</sub> S (ppm)	0.1 ppm	No	7	0.000 to 0.000
	HCN	1 ppm	No	7	0.000 to 0.000
	VOC (ppm)	1 ppm	No	7	0.000 to 0.000
SPM Flex	MDI (ppb)	5 ppb	No	7	0.000 to 0.000
	SO <sub>2</sub> (ppb)	0.2 ppm	No	7	0.000 to 0.000
Handheld DustTrak	PM <sub>2.5</sub> (mg/m <sup>3</sup> )	0.025 mg/m <sup>3</sup>	No	7	0.002 to 0.005
	PM <sub>10</sub> (mg/m <sup>3</sup> )	0.05 mg/m <sup>3</sup>	No	7	0.003 to 0.007

Fixed Discrete Air Monitoring Location EZ-07: 14728-14758 S Bluff Rd					
Instrument	Analyte	Chemtool Public Health Screening Level <sup>1</sup>	Public Health Screening Level Exceeded?	Number of Measurements	Concentration Range
MultiRAE Pro	H <sub>2</sub> S (ppm)	0.1 ppm	No	8	0.000 to 0.000
	HCN	1 ppm	No	8	0.000 to 0.000
	VOC (ppm)	1 ppm	No	8	0.000 to 0.000
SPM Flex	MDI (ppb)	5 ppb	No	8	0.000 to 0.000
	SO <sub>2</sub> (ppb)	0.2 ppm	No	8	0.000 to 0.000
Handheld DustTrak	PM <sub>2.5</sub> (mg/m <sup>3</sup> )	0.025 mg/m <sup>3</sup>	No	8	0.002 to 0.005
	PM <sub>10</sub> (mg/m <sup>3</sup> )	0.05 mg/m <sup>3</sup>	No	8	0.002 to 0.007

Fixed Discrete Air Monitoring Location EZ-08: 1001-1199 Prairie Hill Rd					
Instrument	Analyte	Chemtool Public Health Screening Level <sup>1</sup>	Public Health Screening Level Exceeded?	Number of Measurements	Concentration Range
MultiRAE Pro	H <sub>2</sub> S (ppm)	0.1 ppm	No	8	0.000 to 0.000
	HCN	1 ppm	No	8	0.000 to 0.000
	VOC (ppm)	1 ppm	No	8	0.000 to 0.000
SPM Flex	MDI (ppb)	5 ppb	No	8	0.000 to 0.000
	SO <sub>2</sub> (ppb)	0.2 ppm	No	8	0.000 to 0.000
Handheld DustTrak	PM <sub>2.5</sub> (mg/m <sup>3</sup> )	0.025 mg/m <sup>3</sup>	No	8	0.002 to 0.005
	PM <sub>10</sub> (mg/m <sup>3</sup> )	0.05 mg/m <sup>3</sup>	No	8	0.002 to 0.007

## Air Monitoring Summary Tables

The tables below summarize preliminary air monitoring data collected using Handheld DustTrak, SPM Flex, and MultiRAE Pro instruments.

**Project Name:** Rockton Chemtool Fire ER  
**Date/Time:** 06/21/21 15:12 to 06/22/21 04:40

### Weather

**Temperature:** high of 68°F, low of 46°F  
**Wind Speed:** 0 to 9 miles per hour  
**Wind Direction:** North/Northwest  
**Conditions:** Partly Cloudy

**Date/Time:** 6/21/2021 18:23 to 6/22/2021 05:49

Fixed Discrete Air Monitoring Location EZ-09: Guetschow Ave & Fischer Rd					
Instrument	Analyte	Chemtool Public Health Screening Level <sup>1</sup>	Public Health Screening Level Exceeded?	Number of Measurements	Concentration Range
MultiRAE Pro	H <sub>2</sub> S (ppm)	0.1 ppm	No	8	0.000 to 0.000
	HCN	1 ppm	No	8	0.000 to 0.000
	VOC (ppm)	1 ppm	No	8	0.000 to 0.000
SPM Flex	MDI (ppb)	5 ppb	No	8	0.000 to 0.000
	SO <sub>2</sub> (ppb)	0.2 ppm	No	8	0.000 to 0.000
Handheld DustTrak	PM <sub>2.5</sub> (mg/m <sup>3</sup> )	0.025 mg/m <sup>3</sup>	No	8	0.001 to 0.004
	PM <sub>10</sub> (mg/m <sup>3</sup> )	0.05 mg/m <sup>3</sup>	No	8	0.001 to 0.009

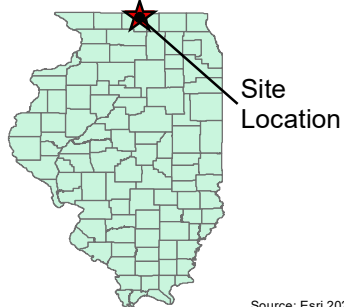
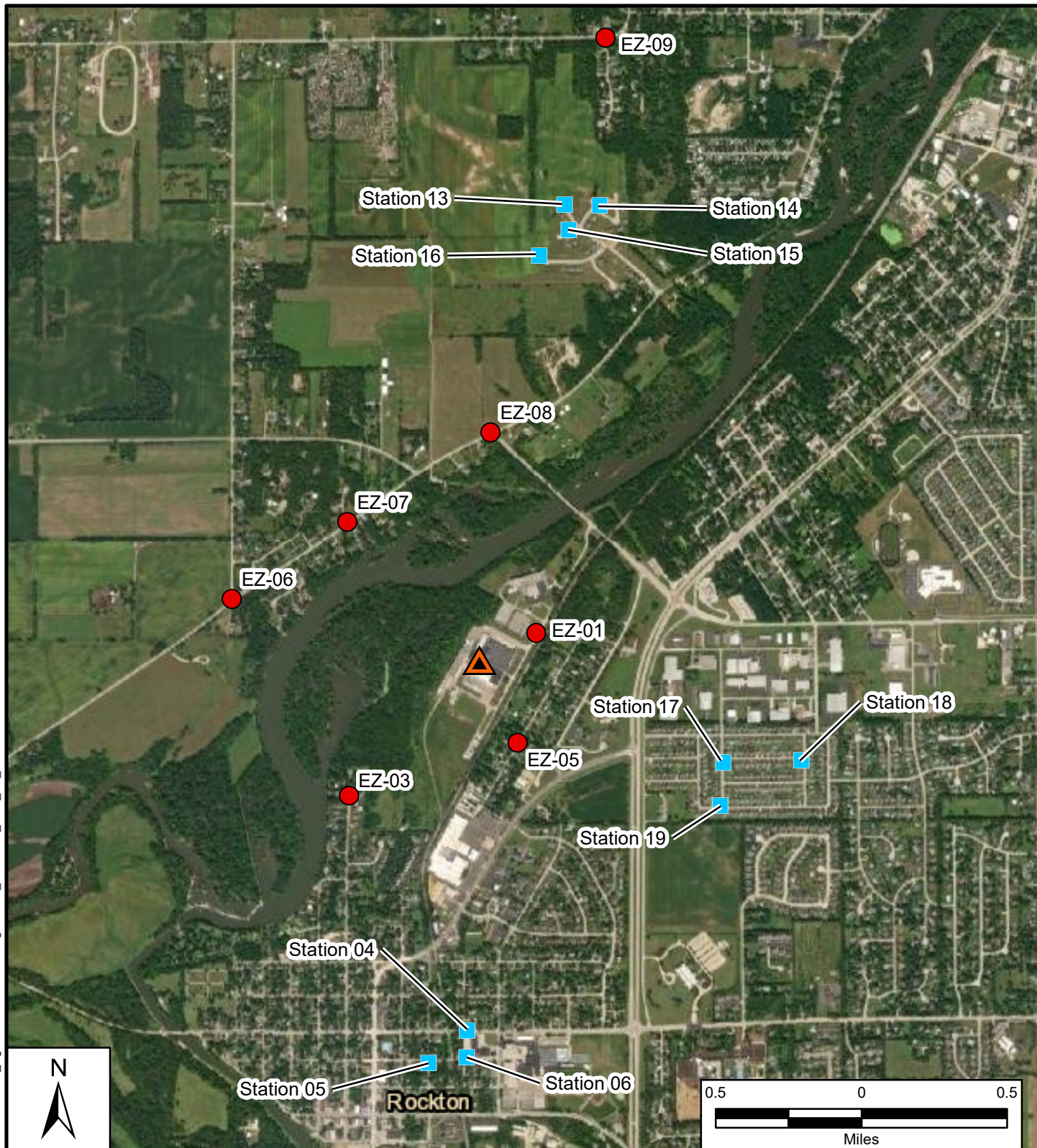
Comments
Start and stop times for each air monitoring instrument varies. The monitoring period is based on the earliest start time and latest stop time out of all
1 - Chemtool Public Health Screening Levels are based on 1-hour time-weighted averages and were established by ATSDR.

### Notes:

CO - Carbon Monoxide  
H<sub>2</sub>S - Hydrogen Sulfide  
O<sub>2</sub> - Oxygen  
MDI - Methylene diphenyl diisocyanate  
PM<sub>2.5</sub> - particles that are 2.5 micrometers and smaller  
PM<sub>10</sub> - particles that are 10 micrometers and smaller  
ppb - Parts per billion  
ppm - Parts per million  
VOC - Volatile organic compounds



File Path: C:\Users\adam.peterca\Desktop\RocktonChemtool\_Figures\mxd\AirMonitoringStations\_20210621\_0400\_TO\_202106211800.mxd



Source: Esri 2020

## Legend

- Fixed Discrete Air Monitoring Locations
- EPA Air Monitoring Station
- ▲ Fire Location

Note: Monitoring station locations subject to change based on weather and operational objectives

Rockton Chemtool Fire ER  
Rockton, IL

**Figure 1**  
**Air Monitoring Stations**  
**06/21/21 15:00 to 06/22/21 06:00**



Prepared For: USEPA

Prepared By: Tetra Tech Inc.

Date Saved: 6/21/2021

EPA Contract No.: 68-HE-0519-D0005

TO/TOLIN No.: TBD

Coordinate System: WGS 1984 Web Mercator Auxiliary Sphere

Projection: Mercator Auxiliary Sphere

Datum: WGS 1984 Units: Meter