



bing

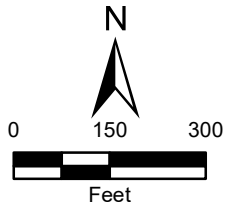
File Path: C:\START WORK\Region VIII\Telluride\Valley Floor\Map\Map.mxd



Legend

- Approximate Site Boundary
- Tailings Areas
- Truck Wash Station
- San Miguel County Trails

Source: © 2021 Microsoft Corporation © 2021 Maxar ©CNES (2021) Distribution Airbus DS © 2021 TomTom
EPA Contract No: 68ME0820F0071 TDD No: 2071-2107-02

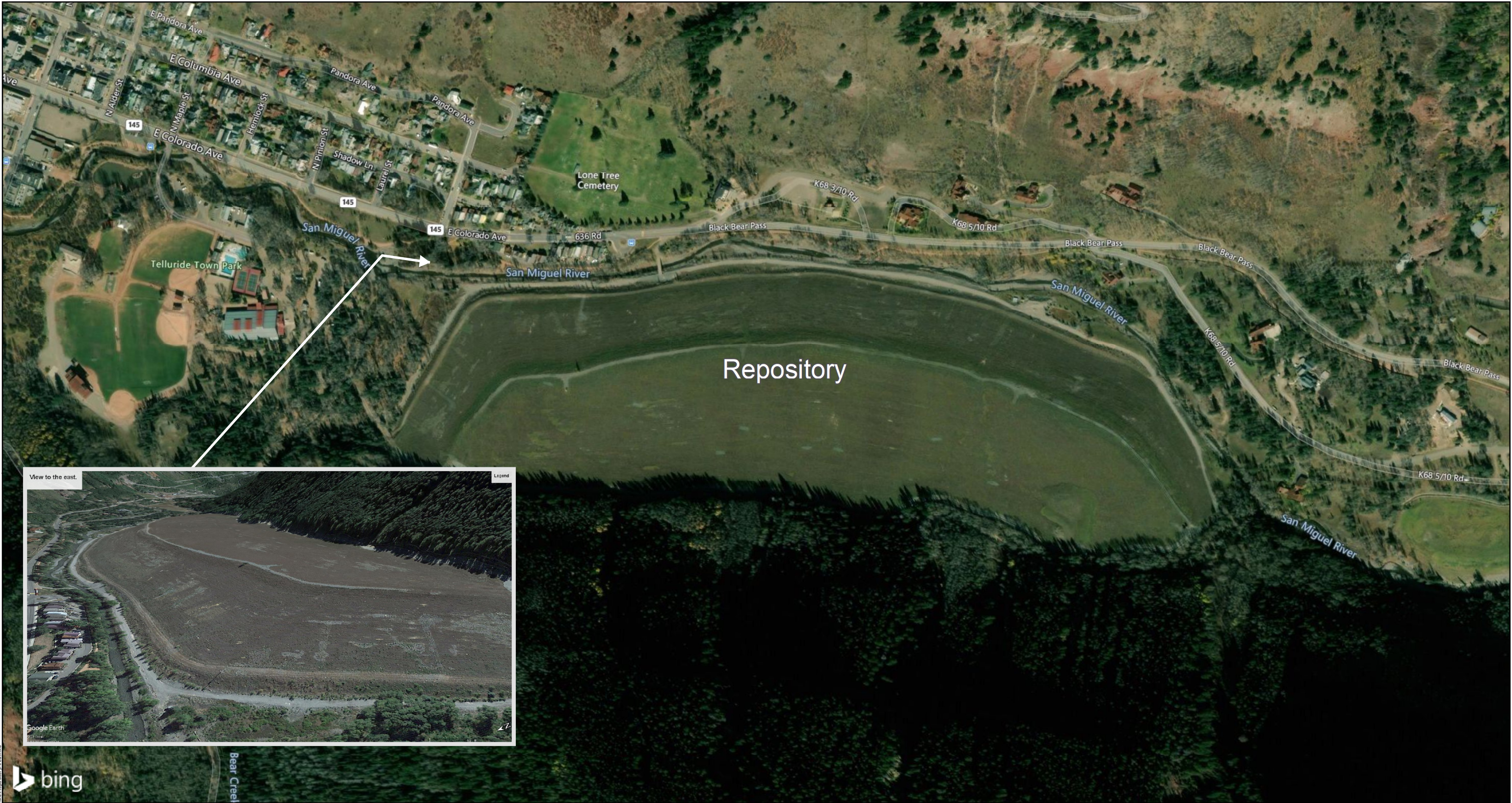


Telluride Valley Floor
San Miguel County, Colorado

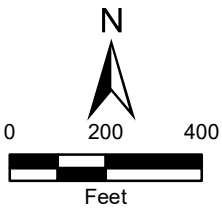
Site Vicinity



Prepared For: U.S. EPA - Region 8 Prepared By: Tetra Tech START V
Coordinate System: NAD 1983 StatePlane Colorado South FIPS 0503 Feet



Source: © 2021 Microsoft Corporation © 2021 Maxar ©CNES (2021) Distribution Airbus DS © 2021 TomTom
EPA Contract No: 68HE0820F0071 TDD No: 2071-2107-02



Telluride Valley Floor
San Miguel County, Colorado

Repository Vicinity

Prepared For: U.S. EPA - Region 8 Prepared By: Tetra Tech START V
Coordinate System: NAD 1983 StatePlane Colorado South FIPS 0503 Feet

File Path: C:\START WORK\Region VIII\Telluride Valley Floor\Repositorium\RepositoriumArea.mxd
Date Saved: 7/16/2021

Site Vicinity Photographs



Picture taken on Boomerang Bridge looking east. Shows eroding tailings on both sides of the San Miguel River and open space on the south side of the river bank where trespassing frequently occurs.



Photo of area closed sign.



Looking west along San Miguel River.



Looking east at user-created trails and jumps within small bicycle park (BMX Area).



Looking east San Miguel River and Valley Floor Trail at eastern boundary.

Site Work Photographs (Fall 2020)



Installing erosion controls before the stream bank containing tailings is pulled back.



Liner installation on the north Riverbank.



Installing a geo-textile liner to keep solids from passing through.



Securing the geo-textile liner with large rip rap.



Road base install with front loader on south side of river.



Site Post-Work Photographs (Fall 2020)



A portion of the rip rap completed on the north riverbank.



Installed drainage controls.



Road based installed in closed areas where bikers frequent on south side of river.



Completed north riverbank lining and arm.

