

Air Monitoring Summary Tables

The tables below summarize preliminary air monitoring data collected using Handheld DustTrak, SPM Flex, and MultiRAE Pro instruments.

Project Name: Morris Industrial Fire ER
Date/Time: 07/23/21 08:34 to 07/23/21 17:40

Weather

Temperature: 88°F, low of 73°F
Wind Speed: 0 to 10 miles per hour
Wind Direction: Southwest
Conditions: Partially Cloudy

Fixed Discrete Air Monitoring Location 010 - Downwind					
Instrument	Analyte	Morris Industrial Fire Public Health Screening Level ¹	Public Health Screening Level Exceeded?	Number of Measurements	Concentration Range
MultiRAE Pro	H ₂ S (ppm)	0.1 ppm	No	2	0.000 to 0.000
	CO (ppm)	--	No	2	0.00 to 0.00
	O ₂ (%)	--	No	2	20.9 to 20.9
	LEL (%)	--	No	2	0.000 to 0.000
	VOC (ppm)	1 ppm	No	2	0.000 to 0.000
SPM Flex	HF	1 ppm	No	6	0.000 to 0.000
Handheld DustTrak	PM _{2.5} (mg/m ³)	0.025 mg/m ³	Yes	2	0.026 to 0.067
	PM ₁₀ (mg/m ³)	0.05 mg/m ³	Yes	2	0.026 to 0.067

Fixed Discrete Air Monitoring Location 011 - Downwind					
Instrument	Analyte	Morris Industrial Fire Public Health Screening Level ¹	Public Health Screening Level Exceeded?	Number of Measurements	Concentration Range
MultiRAE Pro	H ₂ S (ppm)	0.1 ppm	No	2	0.000 to 0.000
	CO (ppm)	--	No	2	0.00 to 0.00
	O ₂ (%)	--	No	2	20.9 to 20.9
	LEL (%)	--	No	2	0.000 to 0.000
	VOC (ppm)	1 ppm	No	2	0.000 to 0.000
SPM Flex	HF	1 ppm	No	6	0.000 to 0.000
Handheld DustTrak	PM _{2.5} (mg/m ³)	0.025 mg/m ³	Yes	2	0.027 to 0.068
	PM ₁₀ (mg/m ³)	0.05 mg/m ³	Yes	2	0.027 to 0.068

Fixed Discrete Air Monitoring Location 012 - Upwind					
Instrument	Analyte	Morris Industrial Fire Public Health Screening Level ¹	Public Health Screening Level Exceeded?	Number of Measurements	Concentration Range
MultiRAE Pro	H ₂ S (ppm)	0.1 ppm	No	2	0.000 to 0.000
	CO (ppm)	--	No	2	0.00 to 0.00
	O ₂ (%)	--	No	2	20.9 to 20.9
	LEL (%)	--	No	2	0.000 to 0.000
	VOC (ppm)	1 ppm	No	2	0.000 to 0.000
SPM Flex	HF	1 ppm	No	6	0.000 to 0.000
Handheld DustTrak	PM _{2.5} (mg/m ³)	0.025 mg/m ³	Yes	2	0.020 to 0.059
	PM ₁₀ (mg/m ³)	0.05 mg/m ³	Yes	2	0.016 to 0.059

Notes: See last page.

Air Monitoring Summary Tables

The tables below summarize preliminary air monitoring data collected using Handheld DustTrak, SPM Flex, and MultiRAE Pro instruments.

Project Name: Morris Industrial Fire ER
Date/Time: 07/23/21 08:34 to 07/23/21 17:40
Weather
Temperature: 88°F, low of 73°F
Wind Speed: 0 to 10 miles per hour
Wind Direction: Southwest
Conditions: Partially Cloudy

Fixed Discrete Air Monitoring Location 013 - Upwind					
Instrument	Analyte	Morris Industrial Fire Public Health Screening Level ¹	Public Health Screening Level Exceeded?	Number of Measurements	Concentration Range
MultiRAE Pro	H ₂ S (ppm)	0.1 ppm	No	2	0.000 to 0.000
	CO (ppm)	--	No	2	0.00 to 0.00
	O ₂ (%)	--	No	2	20.9 to 20.9
	LEL (%)	--	No	2	0.000 to 0.000
	VOC (ppm)	1 ppm	No	2	0.000 to 0.000
SPM Flex	HF	1 ppm	No	6	0.000 to 0.000
Handheld DustTrak	PM _{2.5} (mg/m ³)	0.025 mg/m ³	Yes	2	0.026 to 0.057
	PM ₁₀ (mg/m ³)	0.05 mg/m ³	Yes	2	0.026 to 0.057

Fixed Discrete Air Monitoring Location 014 - Upwind					
Instrument	Analyte	Morris Industrial Fire Public Health Screening Level ¹	Public Health Screening Level Exceeded?	Number of Measurements	Concentration Range
MultiRAE Pro	H ₂ S (ppm)	0.1 ppm	No	2	0.000 to 0.000
	CO (ppm)	--	No	2	0.00 to 0.00
	O ₂ (%)	--	No	2	20.9 to 20.9
	LEL (%)	--	No	2	0.000 to 0.000
	VOC (ppm)	1 ppm	No	2	0.000 to 0.000
SPM Flex	HF	1 ppm	No	6	0.000 to 0.000
Handheld DustTrak	PM _{2.5} (mg/m ³)	0.025 mg/m ³	Yes	2	0.010 to 0.057
	PM ₁₀ (mg/m ³)	0.05 mg/m ³	Yes	2	0.010 to 0.057

Fixed Discrete Air Monitoring Location 015 - Upwind/Crosswind					
Instrument	Analyte	Morris Industrial Fire Public Health Screening Level ¹	Public Health Screening Level Exceeded?	Number of Measurements	Concentration Range
MultiRAE Pro	H ₂ S (ppm)	0.1 ppm	No	3	0.000 to 0.000
	CO (ppm)	--	No	2	0.00 to 0.00
	O ₂ (%)	--	No	2	20.8 to 20.9
	LEL (%)	--	No	1	0.000 to 0.000
	VOC (ppm)	1 ppm	No	2	0.000 to 0.000
SPM Flex	HF	1 ppm	No	6	0.000 to 0.000
Handheld DustTrak	PM _{2.5} (mg/m ³)	0.025 mg/m ³	Yes	2	0.020 to 0.063
	PM ₁₀ (mg/m ³)	0.05 mg/m ³	Yes	2	0.020 to 0.067

Notes: See last page.

Air Monitoring Summary Tables

The tables below summarize preliminary air monitoring data collected using Handheld DustTrak, SPM Flex, and MultiRAE Pro instruments.

Project Name: Morris Industrial Fire ER
Date/Time: 07/23/21 08:34 to 07/23/21 17:40
Weather
Temperature: 88°F, low of 73°F
Wind Speed: 0 to 10 miles per hour
Wind Direction: Southwest
Conditions: Partially Cloudy

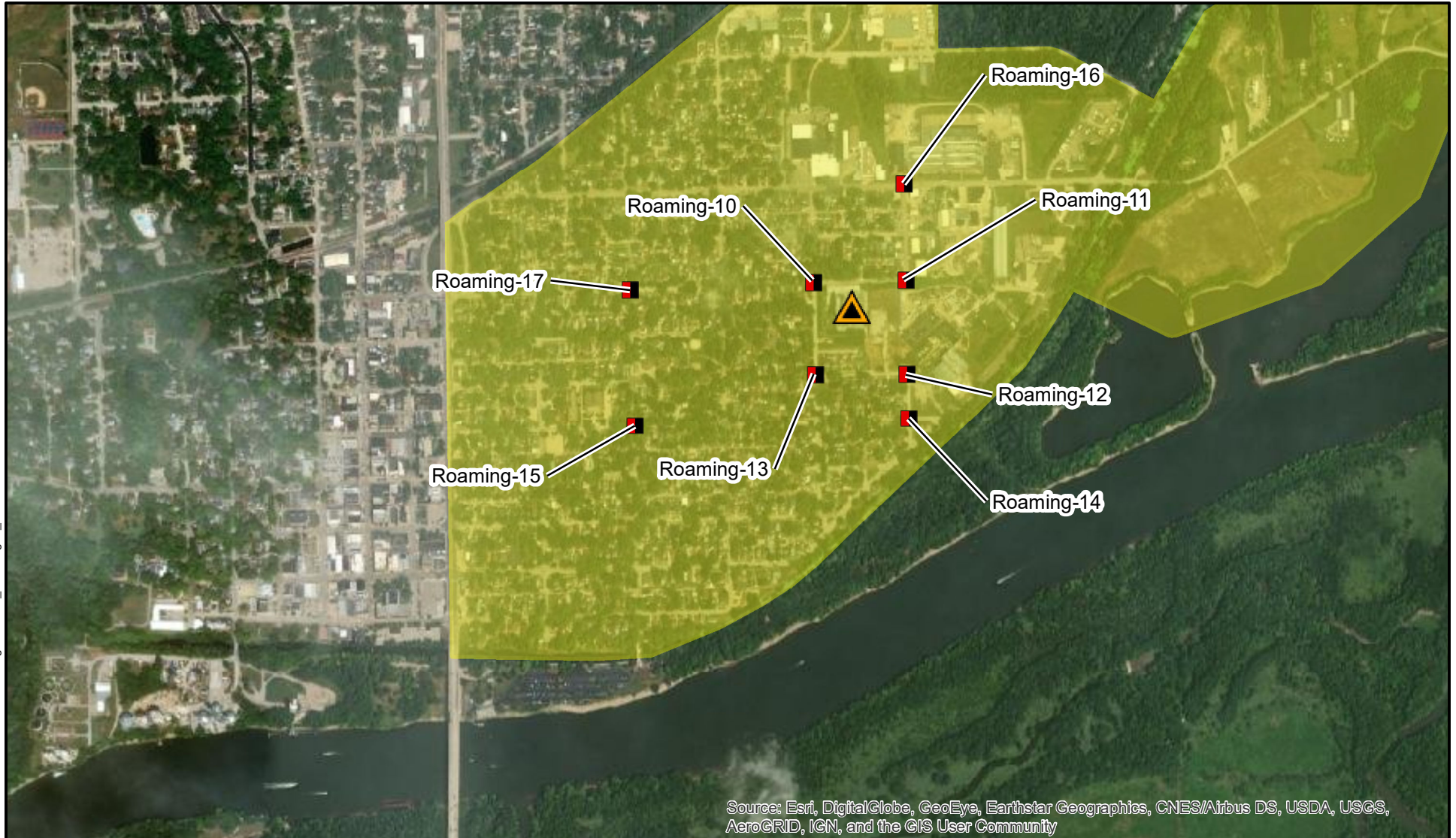
Fixed Discrete Air Monitoring Location 016 - Upwind					
Instrument	Analyte	Morris Industrial Fire Public Health Screening Level ¹	Public Health Screening Level Exceeded?	Number of Measurements	Concentration Range
MultiRAE Pro	H ₂ S (ppm)	0.1 ppm	No	2	0.000 to 0.000
	CO (ppm)	--	No	2	0.00 to 0.00
	O ₂ (%)	--	No	2	20.9 to 20.9
	LEL (%)	--	No	2	0.000 to 0.000
	VOC (ppm)	1 ppm	No	2	0.000 to 0.000
SPM Flex	HF	1 ppm	No	6	0.000 to 0.000
Handheld DustTrak	PM _{2.5} (mg/m ³)	0.025 mg/m ³	Yes	2	0.022 to 0.067
	PM ₁₀ (mg/m ³)	0.05 mg/m ³	Yes	2	0.023 to 0.067

Fixed Discrete Air Monitoring Location 017 - Upwind/Crosswind					
Instrument	Analyte	Morris Industrial Fire Public Health Screening Level ¹	Public Health Screening Level Exceeded?	Number of Measurements	Concentration Range
MultiRAE Pro	H ₂ S (ppm)	0.1 ppm	No	2	0.000 to 0.000
	CO (ppm)	--	No	2	0.00 to 0.00
	O ₂ (%)	--	No	2	20.9 to 20.9
	LEL (%)	--	No	2	0.000 to 0.000
	VOC (ppm)	1 ppm	No	2	0.000 to 0.000
SPM Flex	HF	1 ppm	No	6	0.000 to 0.000
Handheld DustTrak	PM _{2.5} (mg/m ³)	0.025 mg/m ³	Yes	2	0.025 to 0.063
	PM ₁₀ (mg/m ³)	0.05 mg/m ³	Yes	2	0.025 to 0.067

Comments
Start and stop times for each air monitoring instrument varies. The monitoring period is based on the earliest start time and latest stop time out of all units.
1 - Site-Specific Public Health Screening Levels are based on 1-hour time-weighted averages and were established by ATSDR. Fixed discrete monitoring readings are discrete readings, and so do not represent conditions over a full 1-hour period.
2 - PM _{2.5} and PM ₁₀ exceedances of site-specific screening levels were observed at the fixed discrete air monitoring locations during the monitoring period. There was no active fire, smoke or site activities conducted at the facility during the monitoring period.

Notes:

CO - Carbon Monoxide
H₂S - Hydrogen Sulfide
LEL - Lower Explosive Limit
HF - Hydrogen Fluoride
mg/m³ - milligrams per cubic meter
O₂ - Oxygen
PM_{2.5} - particles that are 2.5 micrometers and smaller
PM₁₀ - particles that are 10 micrometers and smaller
ppb - Parts per billion
ppm - Parts per million
VOC - Volatile organic compounds



Source: Esri, DigitalGlobe, GeoEye, Earthstar Geographics, CNES/Airbus DS, USDA, USGS, AeroGRID, IGN, and the GIS User Community



Site
Location

Legend



Fire Location



Fixed Discrete Air Monitoring Locations



Former Approximate Evacuation Zone

Source: Esri 2020

Note: Air monitoring locations subject to change based on site conditions and response objectives



Morris Industrial Fire ER
Morris, Illinois

Figure 1
Air Monitoring Stations
07/23/21 08:34 to 07/23/21 17:40



TETRA TECH

Prepared For: USEPA

Prepared By: Tetra Tech Inc.