



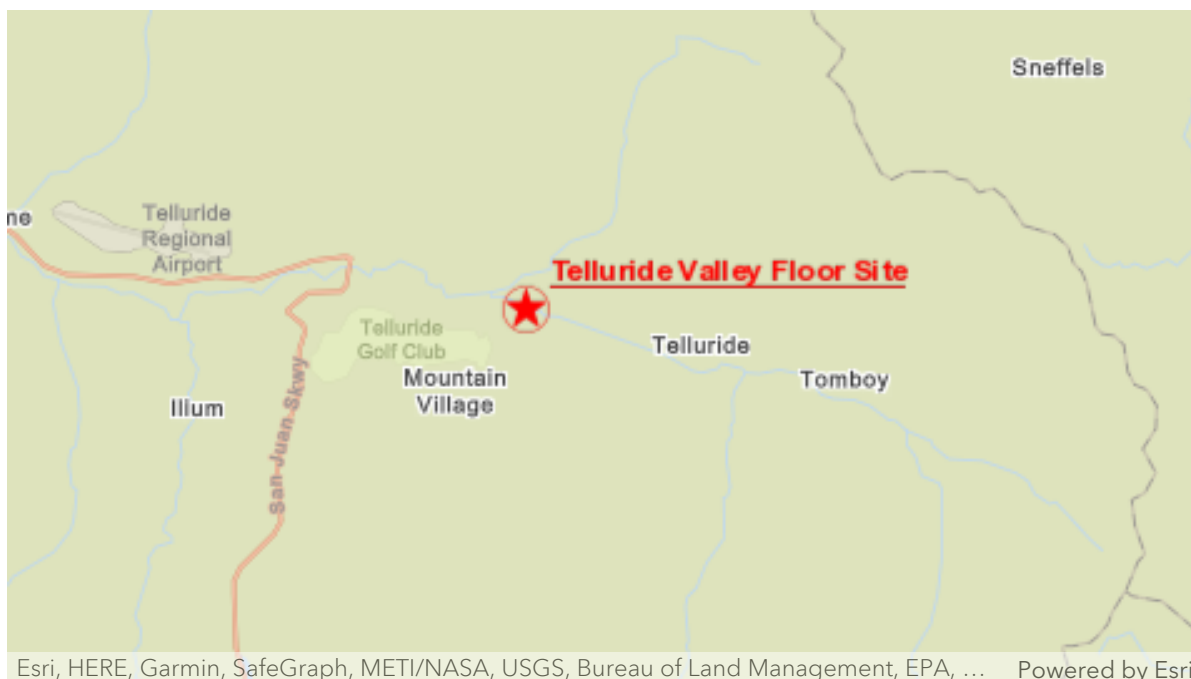
Telluride Valley Floor

A U.S. EPA Region 8 Story Map

July 31, 2021

Overview

U.S. Environmental Protection Agency, in conjunction with U.S. Forest Service, is conducting a joint Removal Action at the Telluride Valley Floor Site, which is located in Telluride, CO.



Site Location Map

EPA is the lead agency conducting the cleanup and has assigned Federal On-Scene Coordinator, Joni Sandoval, to oversee field activities. The Removal Action will be conducted in 2 phases. The first phase will be an Emergency Response to stabilize eroding tailings in the San Miguel River, as well as provide dust and erosion control in an area closed off by signage containing mill tailings, that is frequently trespassed by bikers and trail passers. This phase one will be conducted in November, 2020. The phase 2 Time Critical Removal Action will be conducted in 2021 and is still in the planning phase. This second action will be conducted to mitigate the remaining tailings that pose a threat to human health and the environment.

This Story Map will provide an up to date summary of work progress during the Phase 2 Time Critical Removal Action.



Background

Phase 1

The Site is mixed ownership (small area of Town Property with mostly Federal lands), and was referred to the Environmental Protection Agency (EPA) by the U.S. Forest Service (USFS), due to resource and budgeting constraints in Fall of 2020. The EPA attended a Site Visit with the USFS, Town of Telluride, and Trout Unlimited to conduct a visual Site Evaluation, as well as gain familiarity with the assessment done by the USFS in prior years. Tailings were visibly sloughing off into the San Miguel River and being stirred up by bikers and trail users who did not heed warning signs along the River. The OSC personally observed multiple recreators passing through the area in a short time, including a gentleman with a baby in a bicycle seat on a bike riding through tailings. The tailings contain high levels of lead on average between between 2,000-10,000 ppm, although some areas contain levels up to 100,000 ppm. Arsenic is also above the acceptable exposure limits.



Site Layout

Actions completed as part of Phase 1 include:

- Installation of erosion controls to mitigate runoff from the excavation and stockpile operations.

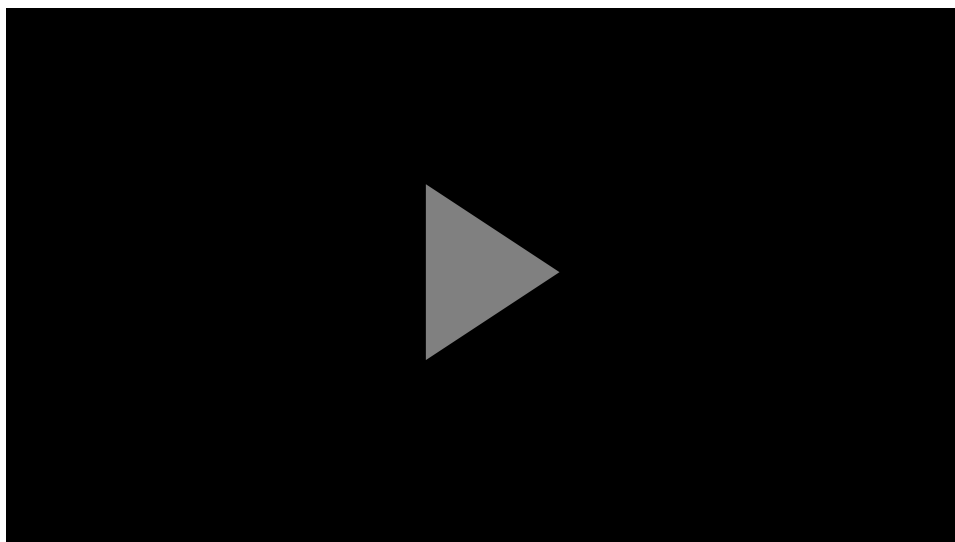
- Removed up to 3,000 cubic yards of tailing and stabilized/armored bank area.
- Installed a low water crossing for moving equipment and material.
- Stabilized hike/bike area by placing a thin cap of gravel over the tailings.
- Placed barriers around contaminated areas, until mitigated or cleaned up.
- Hauled excavated contaminated material to state-designated, responsible party-owned on-site repository.



Completed North Riverbank Lining and Arm



Installed Drainage Controls



Overview of Activities at TVF Boomerang Road Site



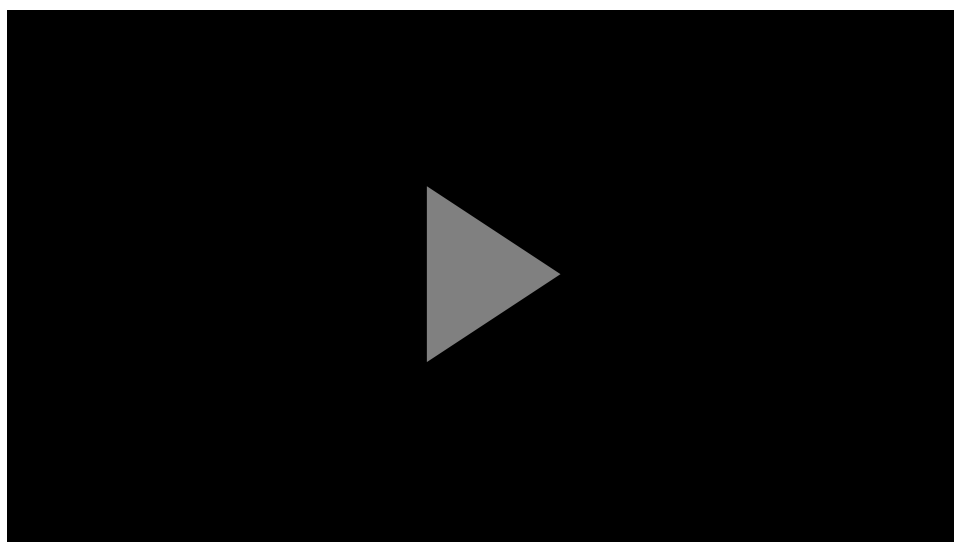
Phase 2

Response Objectives

The objectives during this operational period (07/19/21 - 07/25/21) are as follows;

1. Keep stakeholders informed of EPA response actions.
2. Conduct in-person "office hours" for community members on a monthly basis until removal is complete.
3. Create and emphasize safe working practices for the community.
4. Mobilize crew and equipment.
5. Locate office to host community members.
6. Create and emphasize a safe and efficient work zone for EPA crews.

To view an overview of activities that are expected to be completed onsite, please watch the video below.



TVF Boomerang Road Removal action



Response Operations

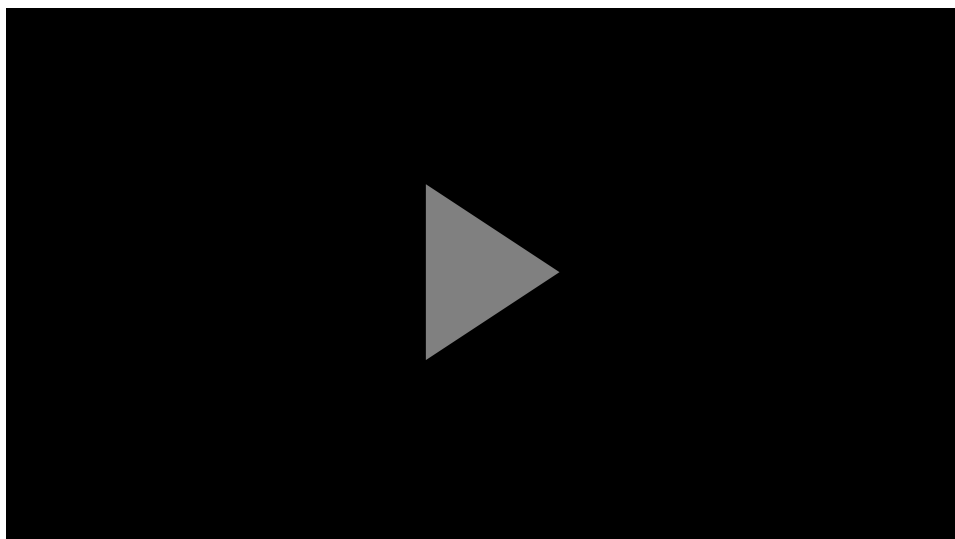
EPA and other stakeholders hosted "office hours" with community members on July 20 and July 21 to learn about the project and talk with EPA and other government stakeholders on the project. Over 50 people attended at least one of the three public office hours session, and several members of the community attended multiple sessions.



Office Hour Setup - July 20, 2021

In response to feedback during the public sessions, EPA made the following revisions to its workplan:

- Reduced the initial number of haul trucks from 6 to 4.
- Limited hauling times to between the hours of 7:00 am - 7:00 pm.
- Will install rubber gaskets in seams of haul trucks to prevent leaks and reduce noises; in addition to decontaminating all haul trucks prior to their leaving the removal site.
- Will direct haulers to maintain their speed at 7 mph from downtown to the repository.

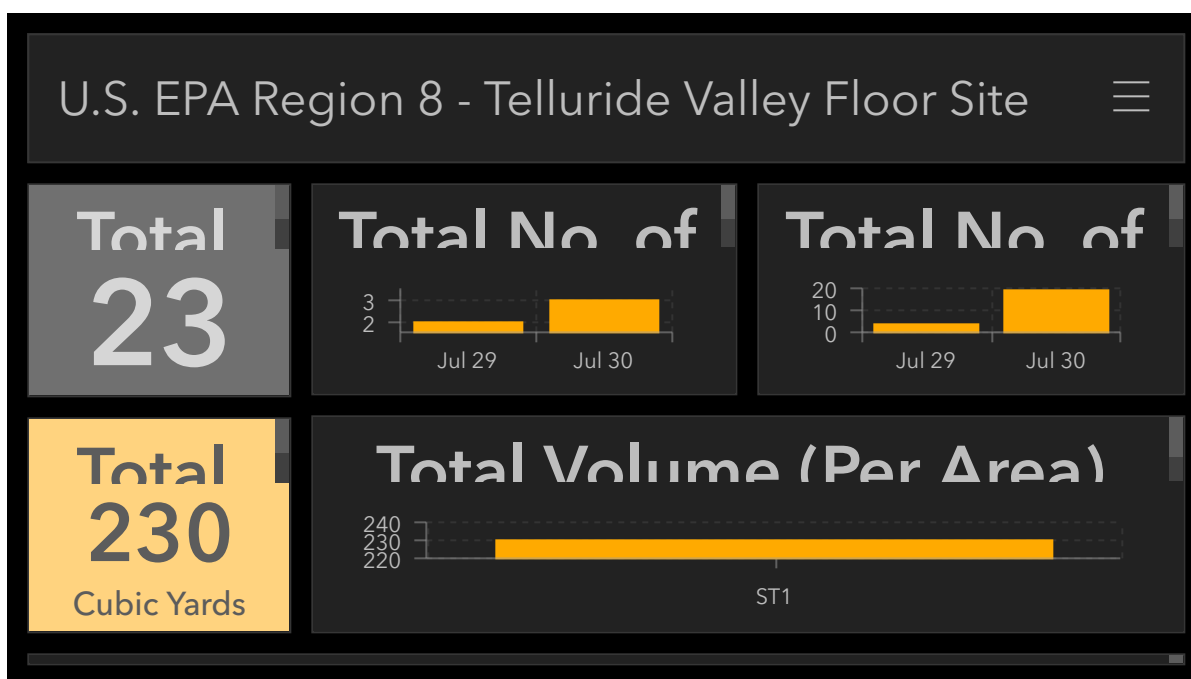


TVF Boomerang Road Removal Plan Updates Based on Community Feedback

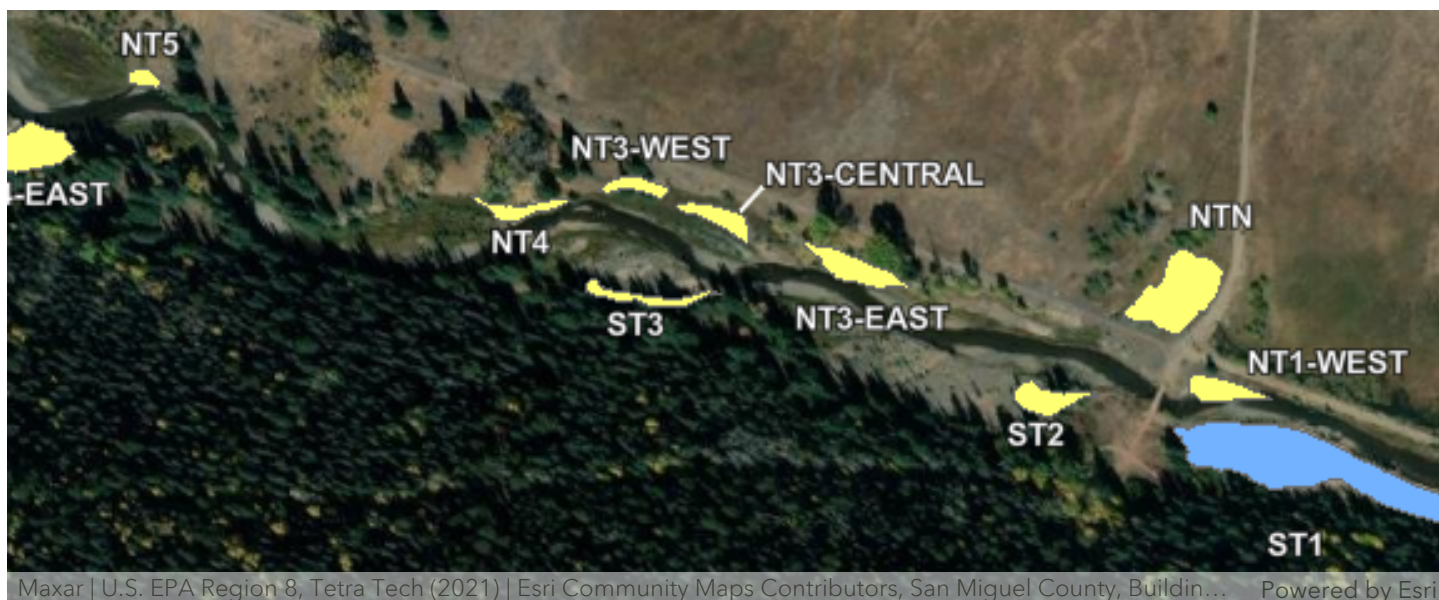
EPA and EPA contractor crews mobilized to the site to start site setup. This included, placement of equipment, office spaces, and basic site set up.

No excavation or hauling of tailings was conducted this week.

A summary providing on overview of vehicle traffic and material transported to the repository is included below.

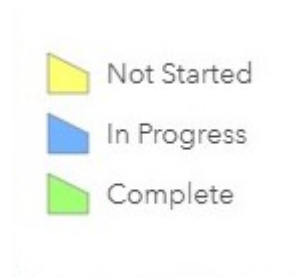


ArcGIS Dashboards



Excavation progress from the tailings piles will be displayed here.

The tailings area will be depicted in yellow to indicate that excavation progress has not yet started, blue to indicate that excavation is in progress, and green when complete.

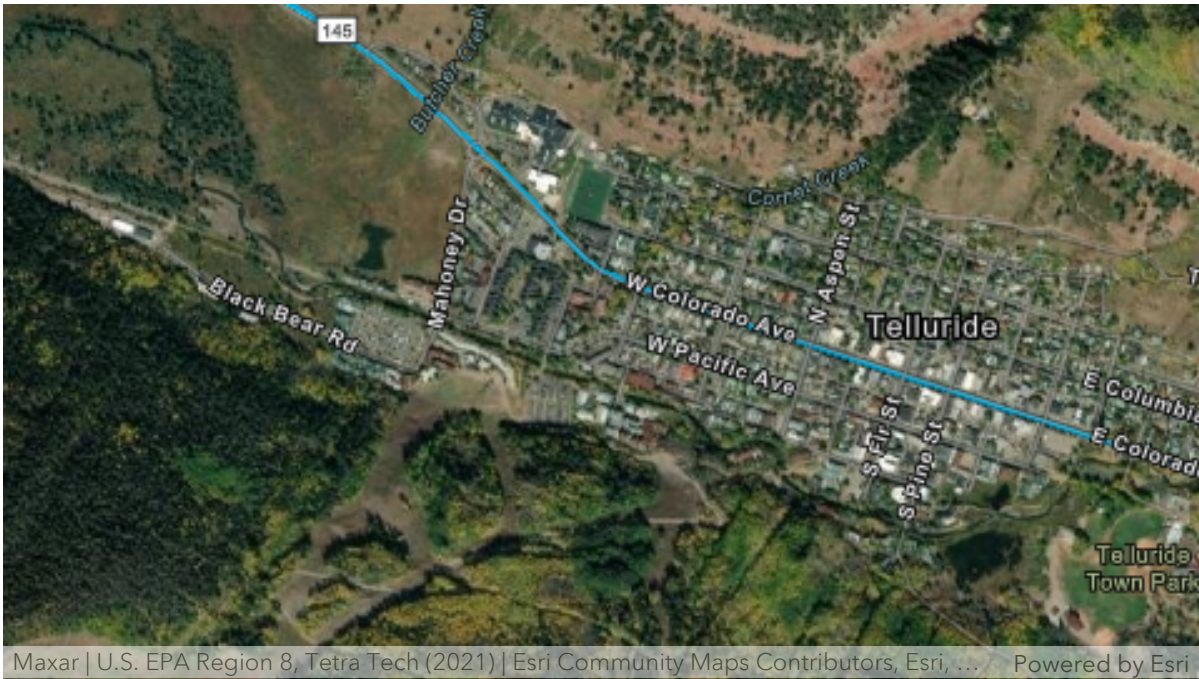


Planned Activities

Next operational period will be July 26 to August 1, 2021.

Activities expected to be performed during the next operational period are as follows;

1. Keep stakeholders informed of EPA response actions.
2. Continue to host office hours at EPA office in Telluride.
3. Continue and maintain safe practices for the community.
4. Start excavation/removal of tailing from the Site.
5. Start hauling tailings to the repository.
6. Maintain a safe and efficient work zone.



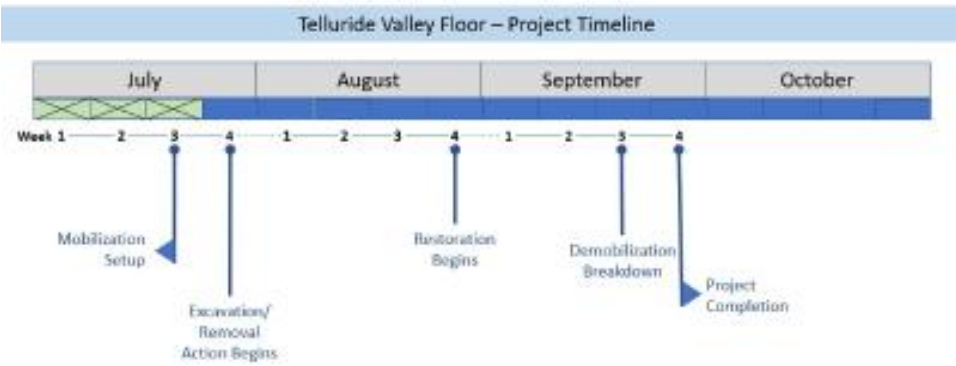
Work Areas and Vehicle Route

Safety Issues

No safety issues were identified during this operational period.

Timeline

NOTE: Timeline may change due to weather and/or other constraints.



Map Viewer

A map viewer can be accessed by clicking the button below.

Map Viewer



More Information

More information can be found on the EPA website. Please click the button below to connect to the EPA website.

EPA Website

