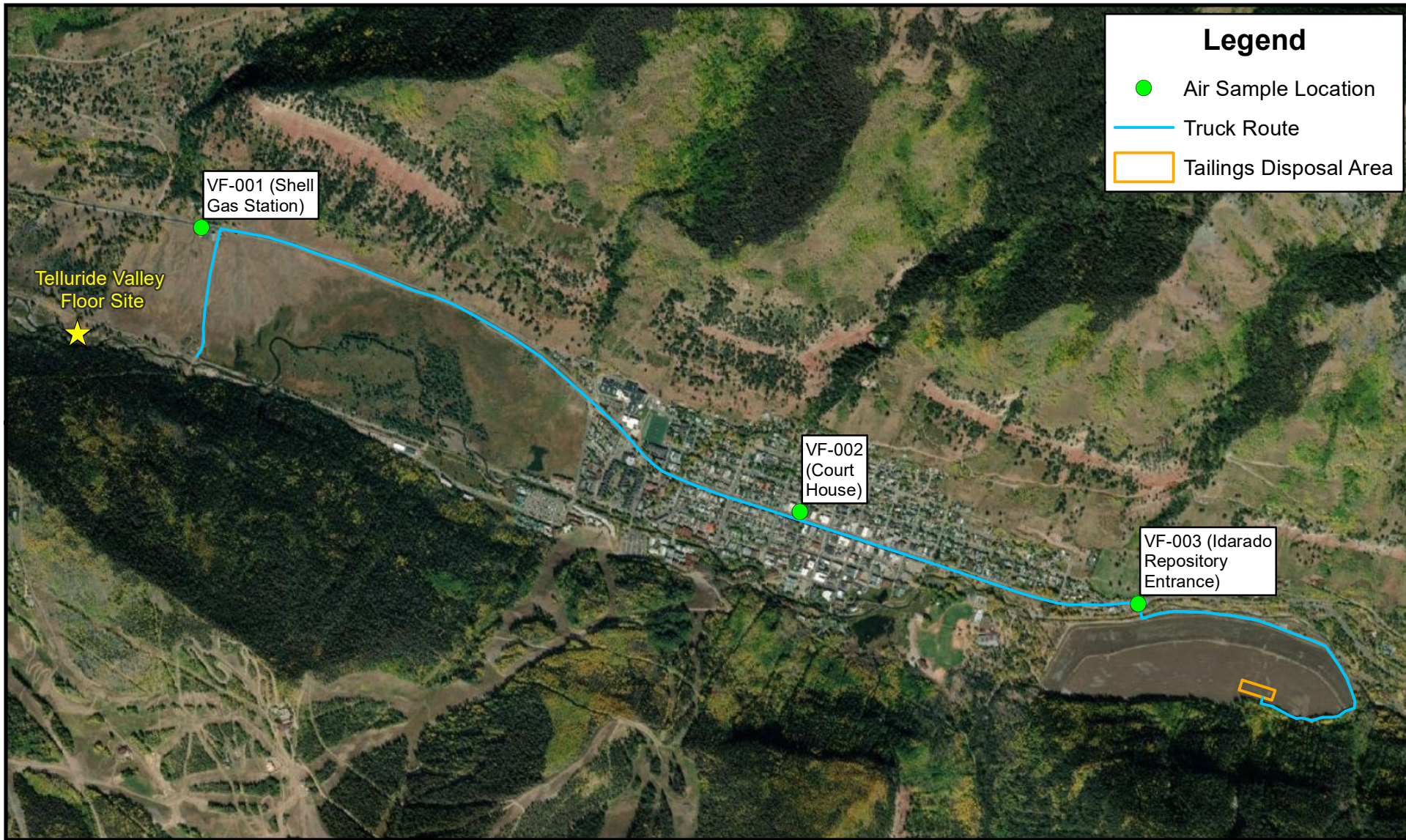


Path: R:\GIS\R8\STARTV\Telluride\Floor\Floor\ArcGIS_Desktop\Maps\Reports\Telluride Valley Floor Air Sample Locations.mxd



Coordinate System: WGS 1984 Web Mercator Auxiliary Sphere
Projection: Mercator Auxiliary Sphere
Datum: WGS 1984

Source:
Background: ESRI World Imagery (2021)

0 0.25 0.5 1 Miles



Prepared for:
U.S. EPA - Region 8

Contract: 68HE0820D0001
TO/TD: 2071-2107-06



Prepared By:
Tetra Tech
START V
1560 Broadway
Suite 1400
Denver, CO



TETRA TECH

**AIR SAMPLE LOCATIONS
TELLURIDE VALLEY FLOOR SITE
TELLURIDE, SAN MIGUEL COUNTY, COLORADO**

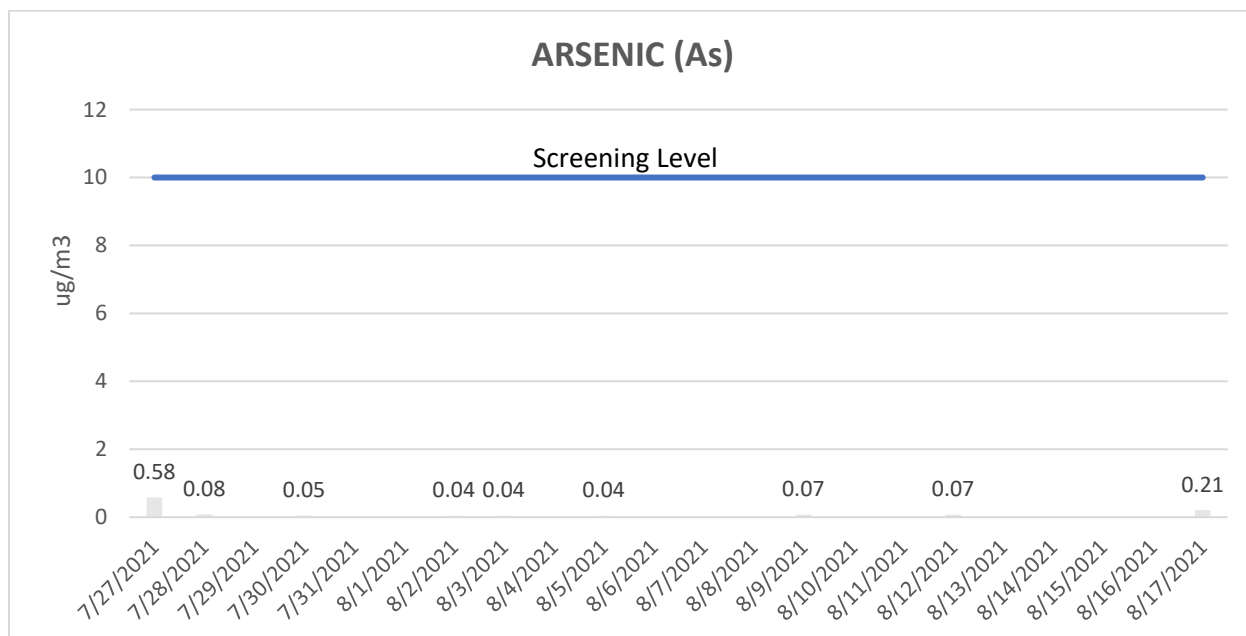
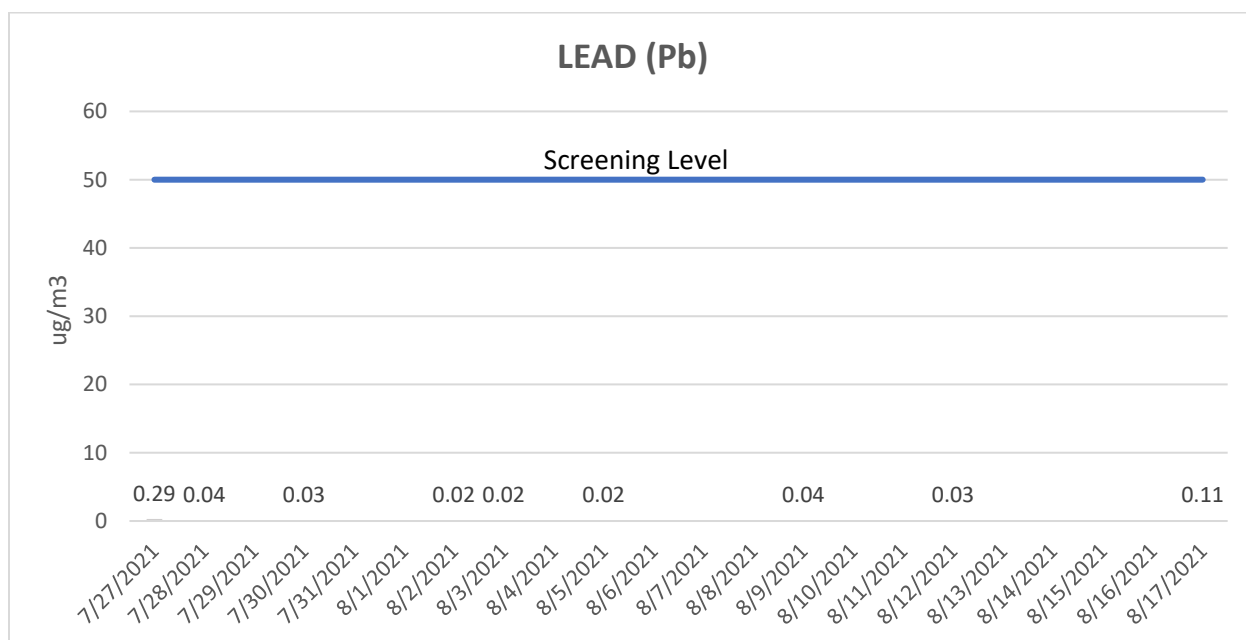
Date: 9/3/2021

Air Sample Data											
						Location VF001 - Shell Gas Station		Location VF002 - Court House		Location VF003 - Idarado Repository Entrance	
Date	Tailings Transported Yes /No	Sample Type	Analyte	Screening Level	Units	Result	Flag	Result	Flag	Result	Flag
7/27/2021	No	Field Sample	Arsenic	10	ug/m3	<0.23	U	<0.14	U	<0.15	U
			Lead	50	ug/m3	<0.12	U	<0.07	U	<0.07	U
7/28/2021	No	Field Sample	Arsenic	10	ug/m3	<0.08	U	<0.08	U	<0.07	U
			Lead	50	ug/m3	<0.04	U	0.04		<0.03	U
7/29/2021	Yes	Field Sample	Arsenic	10	ug/m3	Rejected - failed quality control measures		<0.07	U	<0.05	U
			Lead	50	ug/m3			<0.03	U	<0.03	U
7/30/2021	Yes	Field Sample	Arsenic	10	ug/m3	<0.05	U	<0.05	U	<0.04	U
			Lead	50	ug/m3	<0.03	U	<0.02	U	<0.02	U
8/2/2021	Yes	Field Sample	Arsenic	10	ug/m3	<0.04	U	<0.04	U	<0.04	U
			Lead	50	ug/m3	<0.02	U	<0.02	U	0.02	
8/3/2021	Yes	Field Sample	Arsenic	10	ug/m3	<0.04	U	<0.04	U	<0.04	U
			Lead	50	ug/m3	<0.02	U	<0.02	U	0.08	
8/4/2021	Yes	Field Sample	Arsenic	10	ug/m3	Rejected - failed quality control measures		<0.04	U	<0.04	U
			Lead	50	ug/m3			<0.02	U	<0.02	U
8/5/2021	Yes	Field Sample	Arsenic	10	ug/m3	<0.04	U	<0.04	U	No Sample	
			Lead	50	ug/m3	<0.02	U	<0.02	U		
8/6/2021	Yes	Field Sample	Arsenic	10	ug/m3	Rejected - failed quality control measures		<0.04	U	<0.04	U
			Lead	50	ug/m3			<0.02	U	0.1	
8/9/2021	Yes	Field Sample	Arsenic	10	ug/m3	<0.07	U	No Sample		<0.16	U
			Lead	50	ug/m3	<0.04	U			<0.08	U
8/12/2021	Yes	Field Sample	Arsenic	10	ug/m3	<0.07	U	<0.18	U	<0.16	U
			Lead	50	ug/m3	<0.03	U	<0.09	U	<0.08	U
8/17/2021	Yes	Field Sample	Arsenic	10	ug/m3	<0.21	U	<0.19	U	<0.39	U
			Lead	50	ug/m3	<0.11	U	<0.10	U	<0.20	U

NOTES:

Gold	Indicates a result above detection limit
yellow highlight	Indicates a result above the screening level
Screening Level	Arsenic - Occupational Safety and Health Administration (OSHA) Permissible Exposure Limit, 8 hour time weighted average (TWA) Lead - OSHA Permissible Exposure Limit (8-10 Hr TWA)
<	Less than
ug/m3	microgram per cubic meter
U	The analyte was analyzed for, but was not detected at or above the associated value (reporting limit).

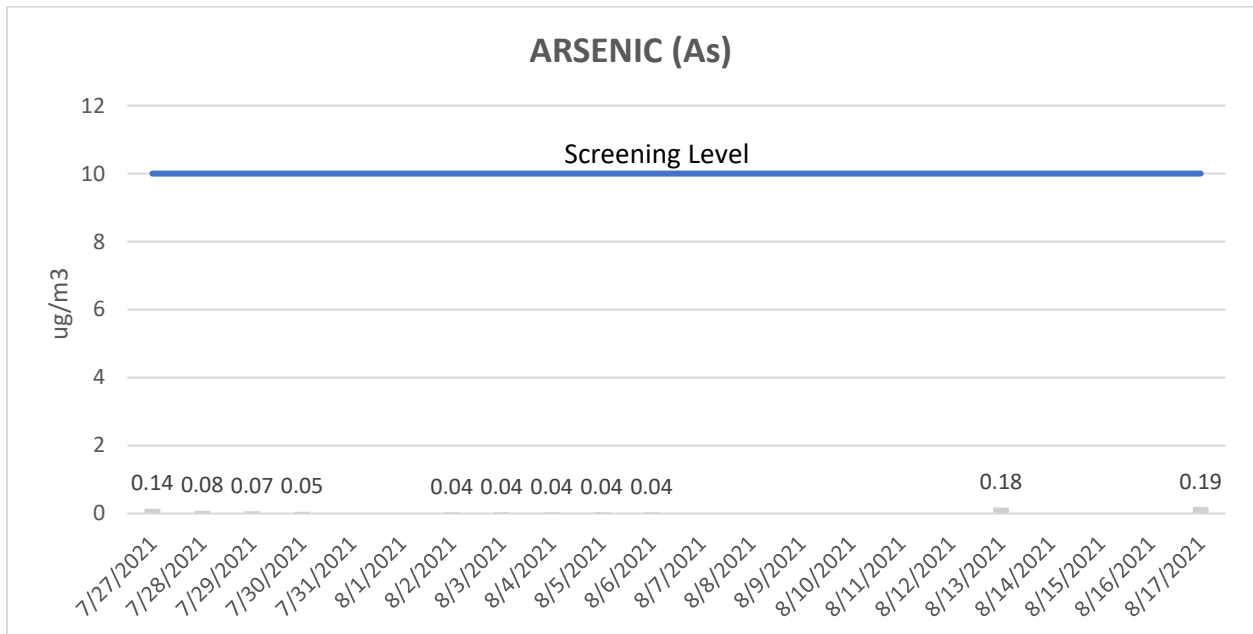
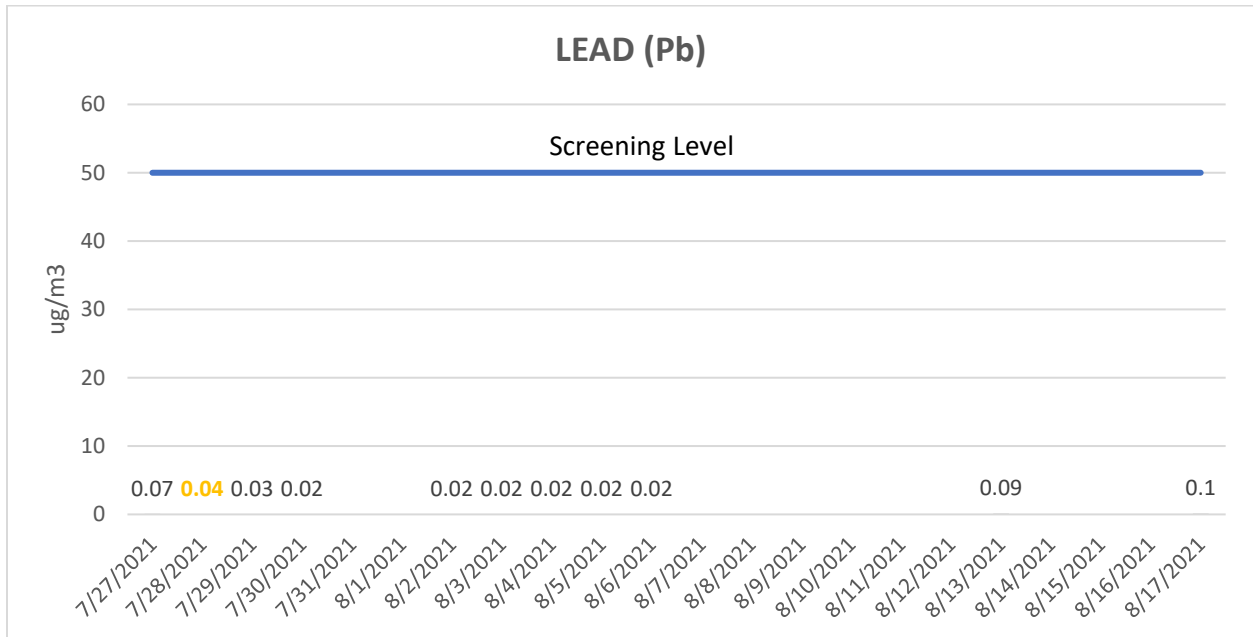
AIR SAMPLE RESULTS VF-001 (SHELL GAS STATION)



Notes:

1. Gold label on chart: Detected and quantified, this is an actual result.
2. Black label on chart: No result detected. Lab provides the lowest reporting limit. This indicates that the analyte was analyzed for, but was not detected at or above the associated reporting limit (value on chart).
3. Screening Level – Arsenic: Occupational Safety and Health Administration (OSHA) Permissible Exposure Limit, 8 hour time weighted average (TWA)
4. Screening Level – Lead: OSHA Permissible Exposure Limit (8-10 Hr TWA)

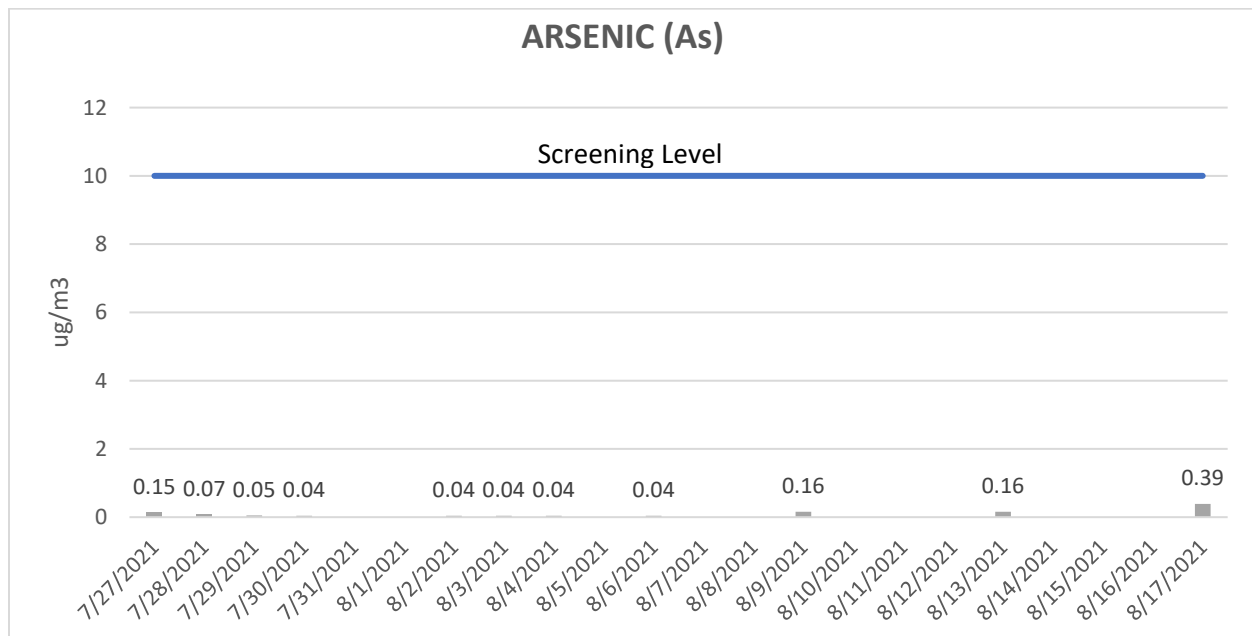
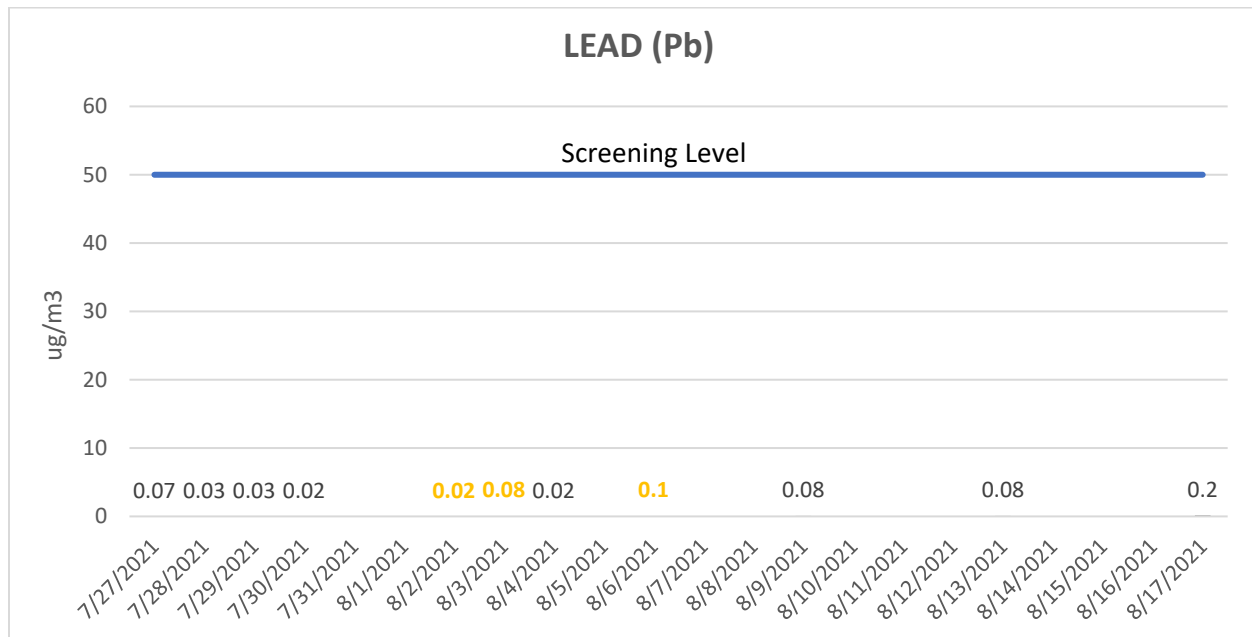
AIR SAMPLE RESULTS VF-002 (COURT HOUSE)



Notes:

1. Gold label on chart: Detected and quantified, this is an actual result.
2. Black label on chart: No result detected. Lab provides the lowest reporting limit. This indicates that the analyte was analyzed for, but was not detected at or above the associated reporting limit (value on chart)
3. Screening Level – Arsenic: Occupational Safety and Health Administration (OSHA) Permissible Exposure Limit, 8 hour time weighted average (TWA)
4. Screening Level – Lead: OSHA Permissible Exposure Limit (8-10 Hr TWA)

AIR SAMPLE RESULTS VF-003 (IDARADO REPOSITORY ENTRANCE)



Notes:

1. Gold label on chart: Detected and quantified, this is an actual result.
2. Black label on chart: No result detected. Lab provides the lowest reporting limit. This indicates that the analyte was analyzed for, but was not detected at or above the associated reporting limit (value on chart).
3. Screening Level – Arsenic: Occupational Safety and Health Administration (OSHA) Permissible Exposure Limit, 8 hour time weighted average (TWA)
4. Screening Level – Lead: OSHA Permissible Exposure Limit (8-10 Hr TWA)