

Legend

● Site Location

0 450 900 1,800 Feet



Prepared for:
U.S. EPA Region 8

Contract No.:

TDD:
0003/1307-12

DCN:
W0049.1A.00082

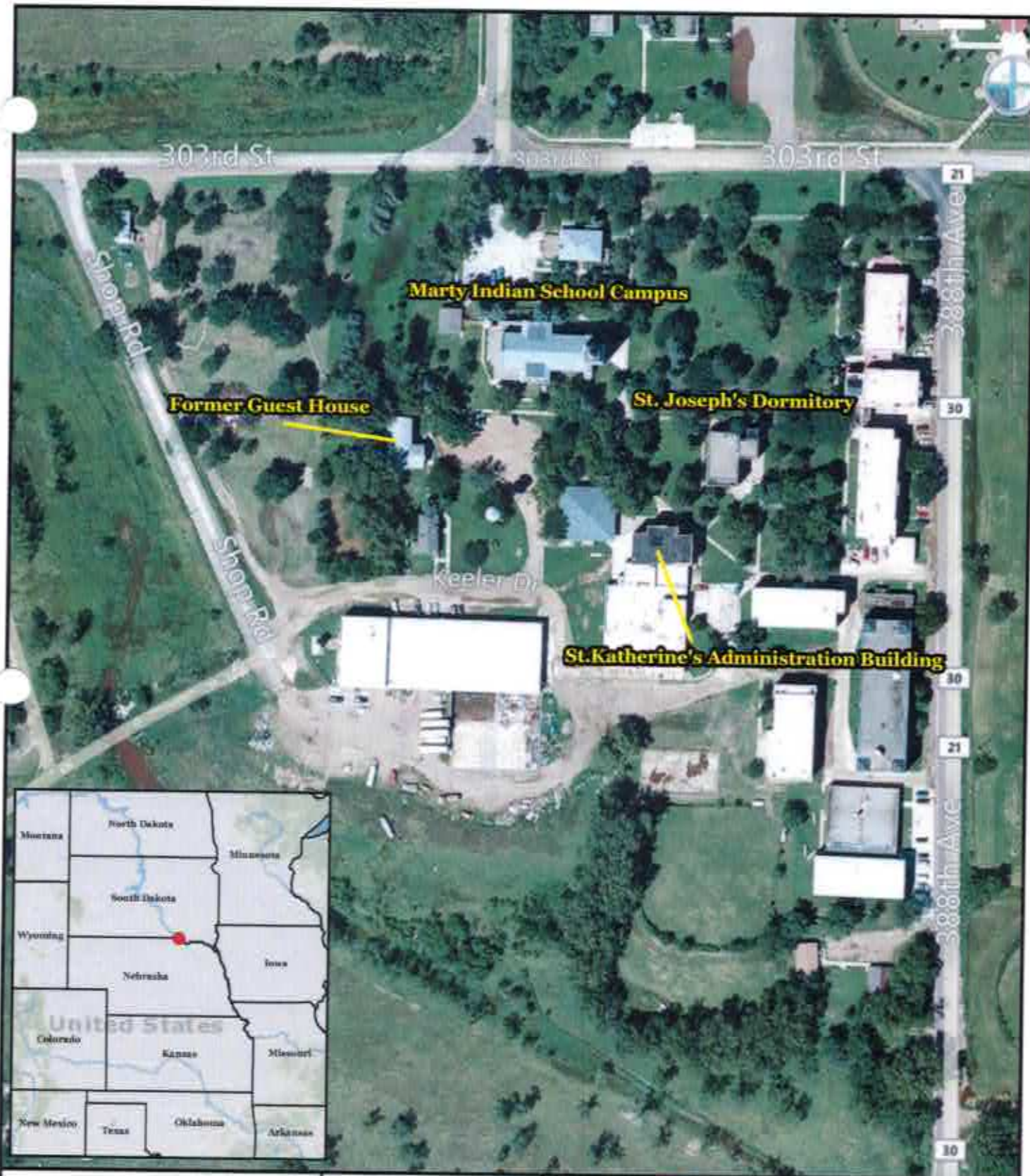


Prepared By:
Weston Solutions, Inc.
START IV

Suite 100
1435 Garrison Street
Lakewood, CO 80215

FIGURE 1
SITE LOCATION MAP
FORMER GUEST HOUSE
YANKTON SIOUX
TRIBE PROPERTIES
MARTY, SOUTH DAKOTA

Date: 11/18/2013



Prepared for:
U.S. EPA Region 8



Contract No.:

TDD:
0003/1307-12

DCN:
W0049.1A.00082



Prepared By:
Weston Solutions, Inc.
START IV

Suite 100
1435 Garrison Street
Lakewood, CO 80215

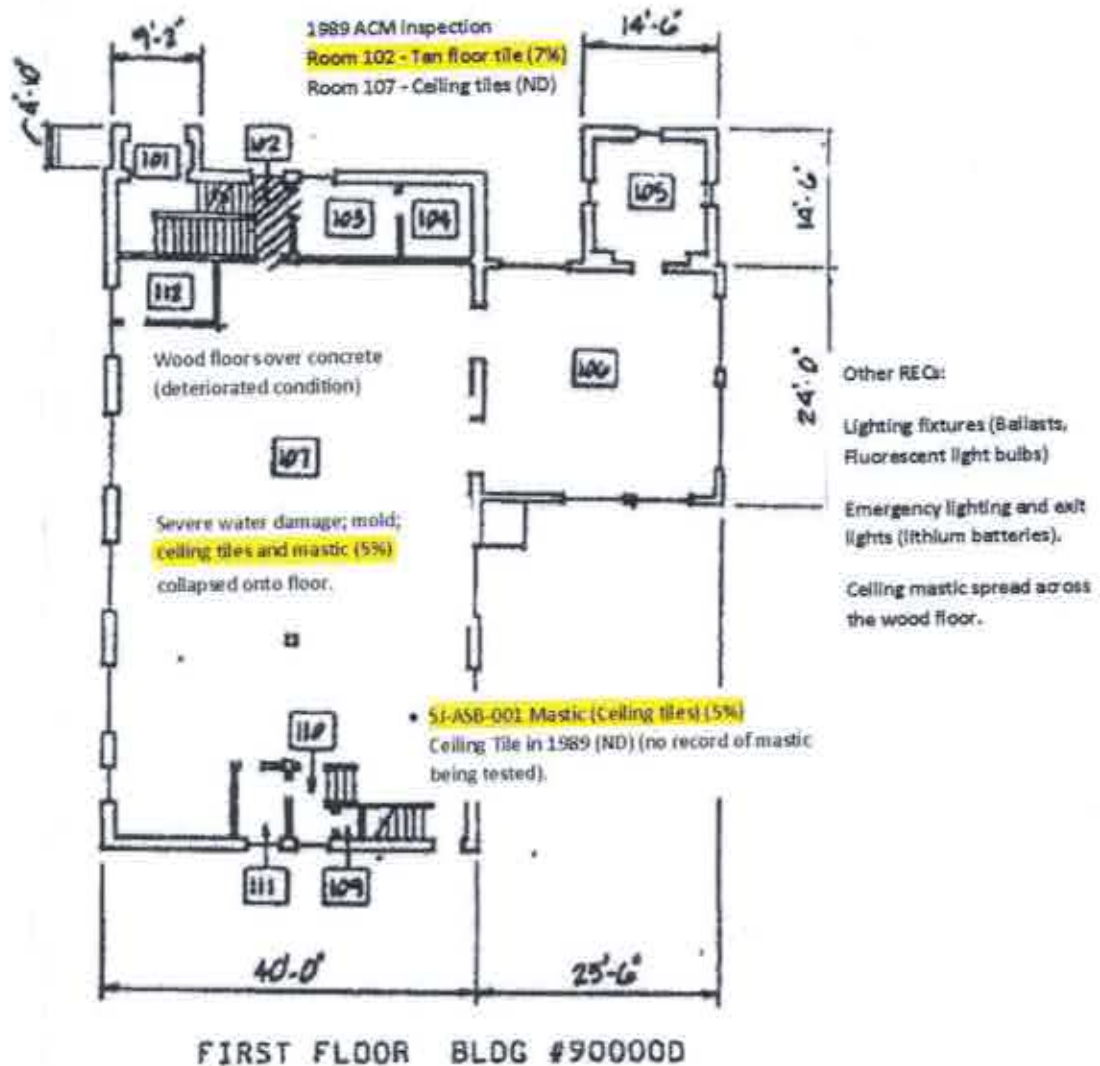
FIGURE 2
SITE VICINITY MAP
FORMER GUEST HOUSE
YANKTON SIOUX
TRIBE PROPERTIES
MARTY, SOUTH DAKOTA

Date: 11/18/2013

0 87.5 175 350 Feet



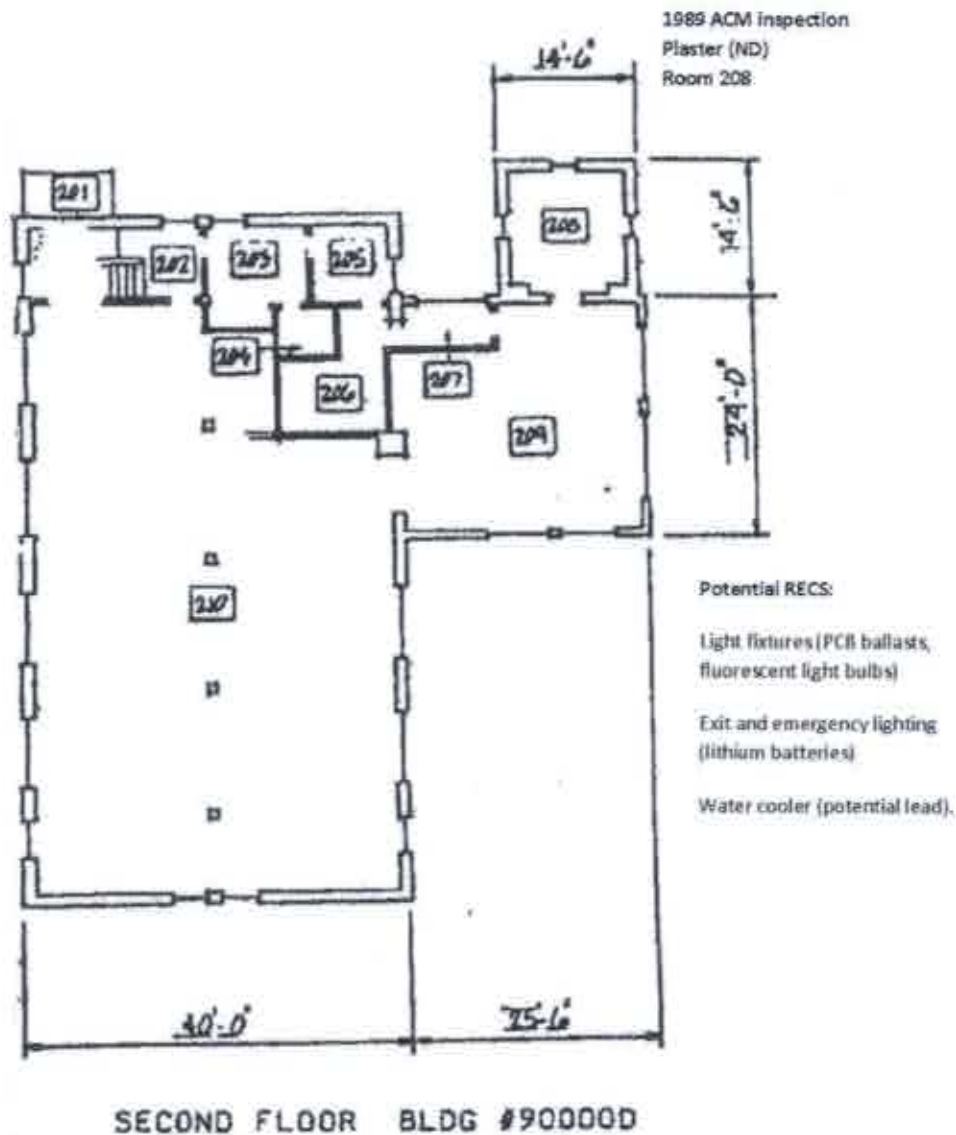
St. Joseph's, Marty Indian School Floor Plans and Sampling Locations
1989 Asbestos Inspection and 2013 TBA Phase II Inspection



Only one interior sample (ceiling tile mastic) was taken (at entrance) due to health and safety issues: live pigeons roosting; pigeon feces, extreme mold, odor, deteriorating floor and ceiling conditions. EPA WAM Stephanie Metz was notified of condition. Photographs were taken and included in Appendix. One XRF reading was taken at exterior window. Based on results, composite soil samples were collected at each external wall.

Figure 3. Floor Plan and Sampling Locations (1st Floor)

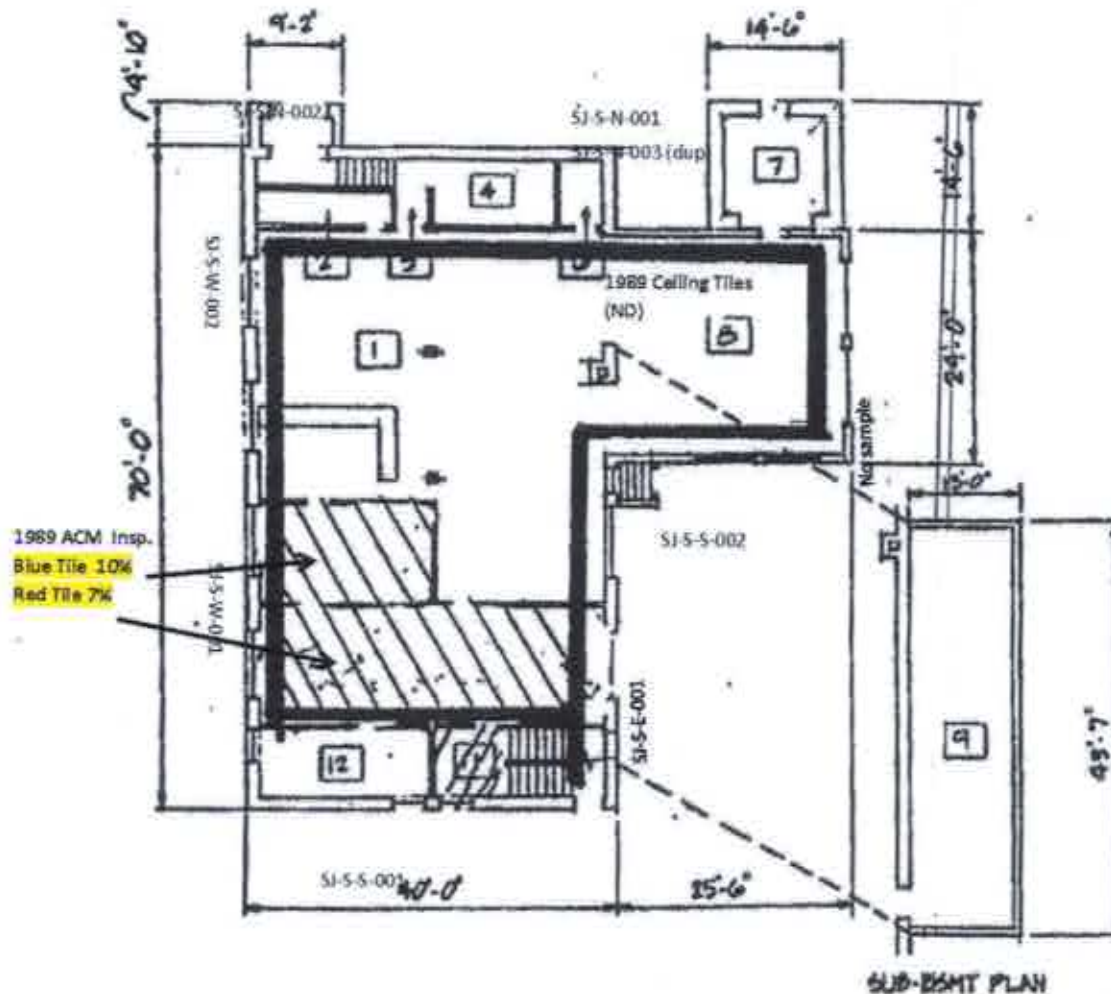
St. Joseph's, Marty Indian School Floor Plans and Sampling Locations
1989 Asbestos Inspection and 2013 TBA Phase II Inspection



Did not sample in the 2nd floor due to pigeon feces, deteriorating floor and ceiling conditions, and presence of mold. Photographs were taken and included in Appendix.

Figure 4. Floor Plan and Sampling Locations (2nd Floor)

St. Joseph's, Marty Indian School Floor Plans and Sampling Locations
1989 Asbestos Inspection and 2013 TBA Phase II Inspection



BASEMENT BLDG #900000

Did not sample in the basement due to 20+ live pigeons roosting; pigeon feces, extreme mold. Photographs were taken and included in Appendix. Building has health and safety issues. EPA WAM was notified on 9/25 of intention not to sample. Cleaning supplies and paint were stored in basement. Photographs provided in Appendix. Sub-basement was not accessed.

Figure 5. St. Joseph's Floor Plan and Sampling Locations (Basement)

St. Joseph's, Marty Indian School Floor Plans and Sampling Locations
1989 Asbestos Inspection and 2013 TBA Phase II Inspection

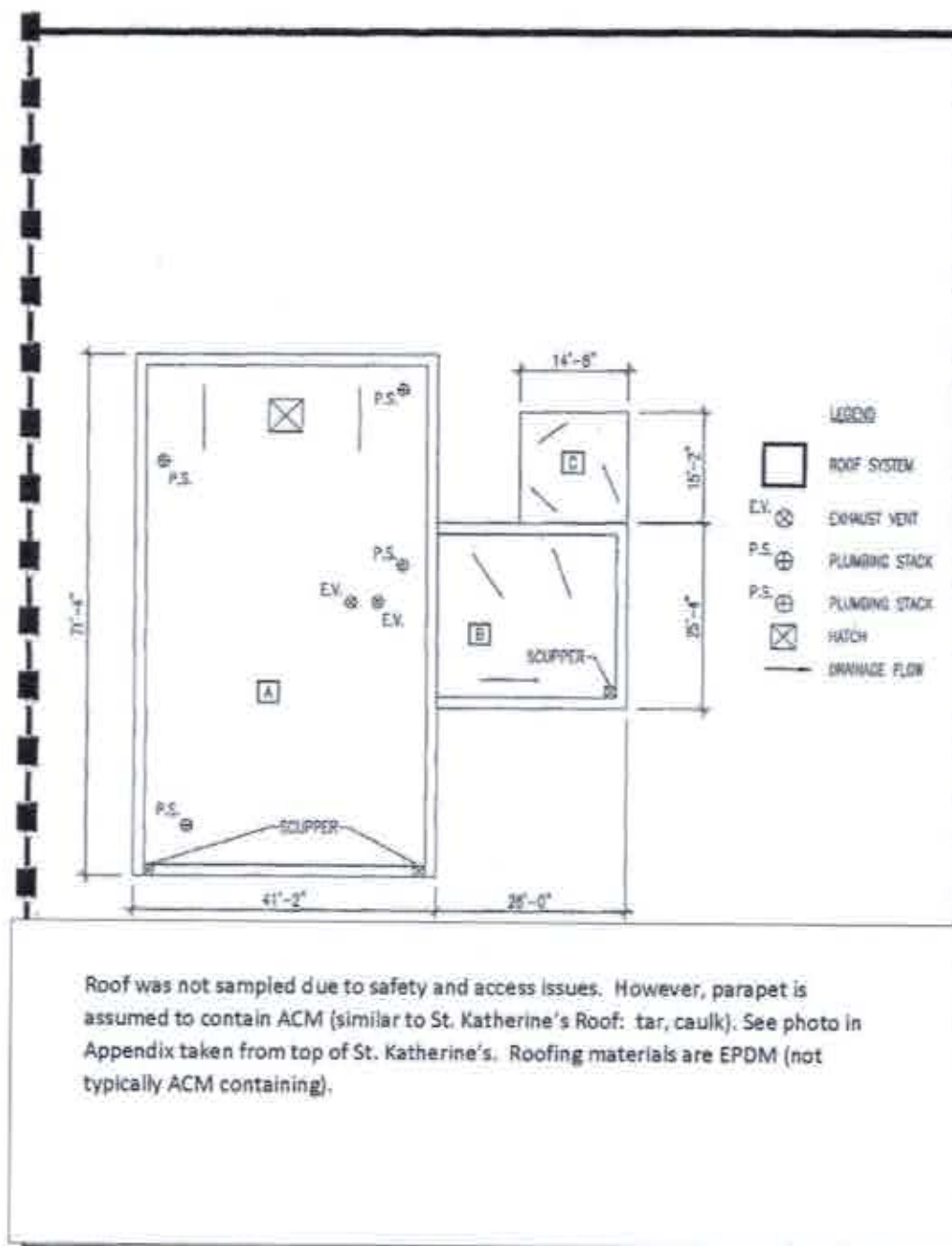


Figure 6. Floor Plan and Sampling Locations (Roof)