

---

# APPENDIX A

---

## Southeast Wisconsin Inland Zone Sub-Area Figures

## Contents

EPA Figures .....	1
Southeast Wisconsin Inland Zone Sub-Area Figure .....	1
Manitowoc, Sheboygan, and Ozaukee County Figure .....	1
Milwaukee Figure .....	1
Racine and Kenosha County Figure .....	1
Federal Agency Figures .....	1
State Agency Figures .....	1
Tribal Figures .....	1
Local Agency Figures .....	1
Private Sector Figures .....	1
Other Figures .....	1

## EPA Figures

List of EPA generated figures.

Southeast Wisconsin Inland Zone Sub-Area Figure

Manitowoc, Sheboygan, and Ozaukee County Figure

Milwaukee County Figure

Racine and Kenosha County Figure

## Federal Agency Figures

List of other Federal Agency generated figures, if applicable.

## State Agency Figures

List of State Agency generated figures, if applicable.

## Tribal Figures

List of Tribal generated figures, if applicable.

## Local Agency Figures

List of Local Agency generated figures, if applicable.

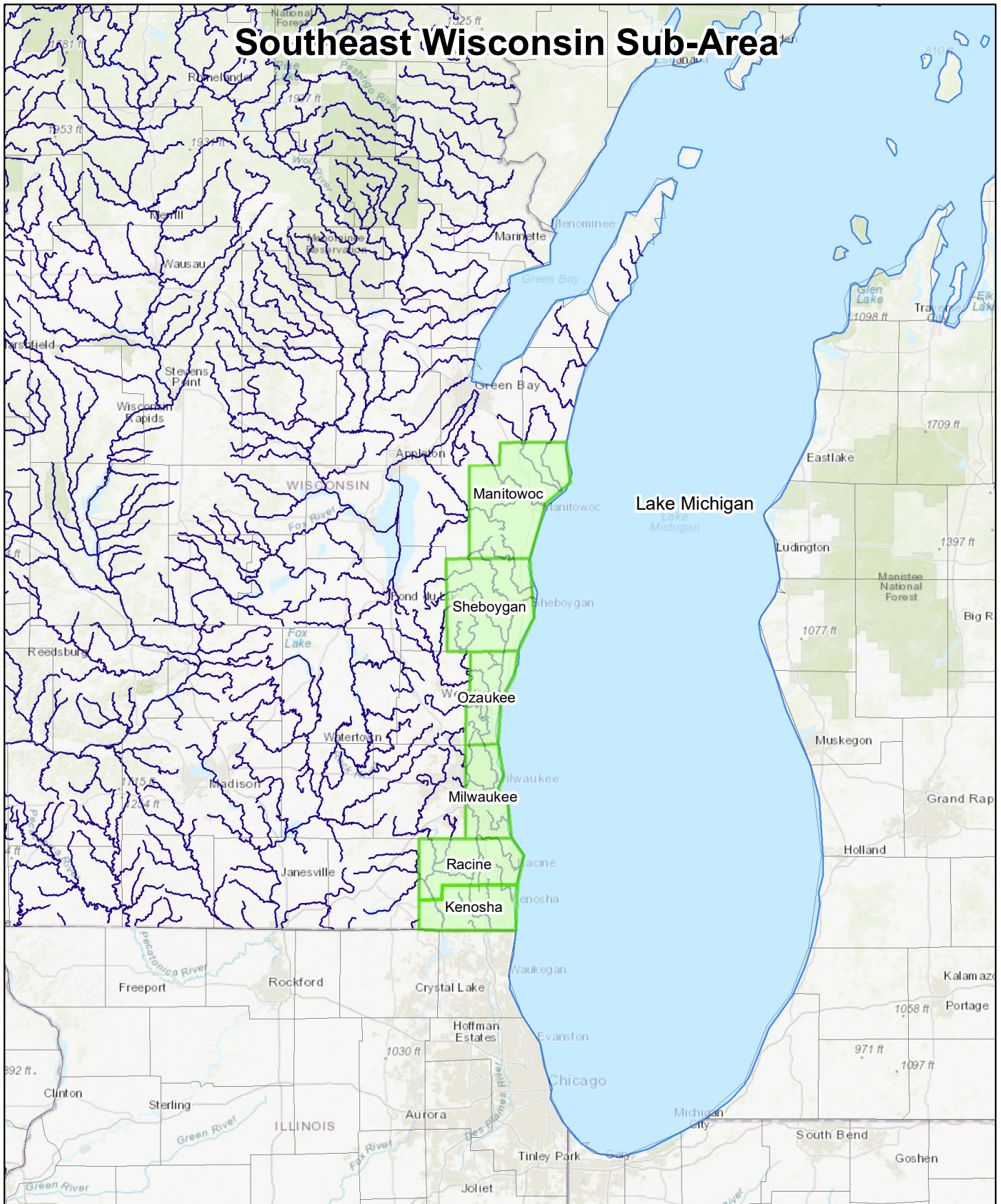
## Private Sector Figures

List of Private Sector generated figures, if applicable.

## Other Figures

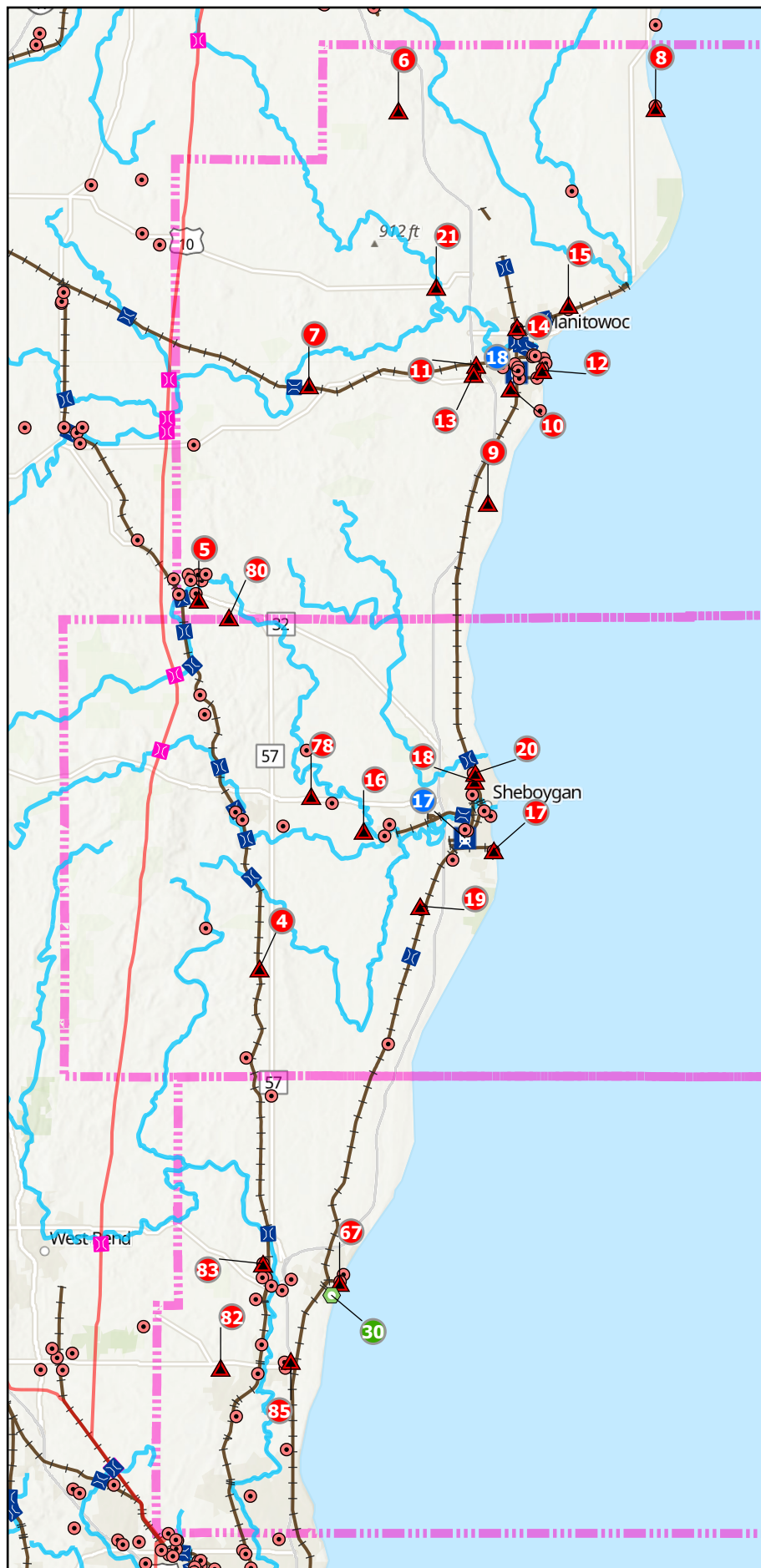
List of other generated figures, if applicable.

# Southeast Wisconsin Sub-Area





# SOUTHEAST WISCONSIN SUB-AREA - MANITOWOC, SHEBOYGAN, AND OZAUKEE COUNTIES



## Legend

- ⬡ FRP Facilities
- ▲ Aboveground Storage Tanks
- Hazardous Materials Storage
- X Pipeline River Crossing
- Petroleum Pipelines
- Railroads
- Rivers
- County Boundary

## FRP Facilities

ID	NAME
30	WISCONSIN ELECTRIC POWER COMPANY

## Aboveground Storage Tanks

ID	NAME
4	Co-Energy Alliance Bulk Petroleum Plant
5	Weber Oil Co., Inc.
6	Maribel Grain Co.
7	Country Visions Cooperative
8	Point Beach Nuclear Plant
9	Chizek Transport, Inc.
10	Manitowoc Dept. Of Public Works
11	MPU Custer Energy Center
12	Manitowoc Public Utilities - Power Plant / Water Plant
13	Northern Labs, Inc.
14	Parker Hannifin Corp. HPD
15	Skana Aluminum Co.
16	Bemis Mfg. Co., Plant D
17	Edgewater Generating Station
18	Quality State Oil Co.
19	Aldrich Chemical Co., LLC
20	Plastics Engineering Co.
21	Country Visions Cooperative
67	Port Washington Generating Station
78	Sheboygan Falls Asphalt Plant - C51
80	Kiel Asphalt Plant - C26
82	Cedarburg Bulk Plant
83	Charter Steel
85	Costco Wholesale #628

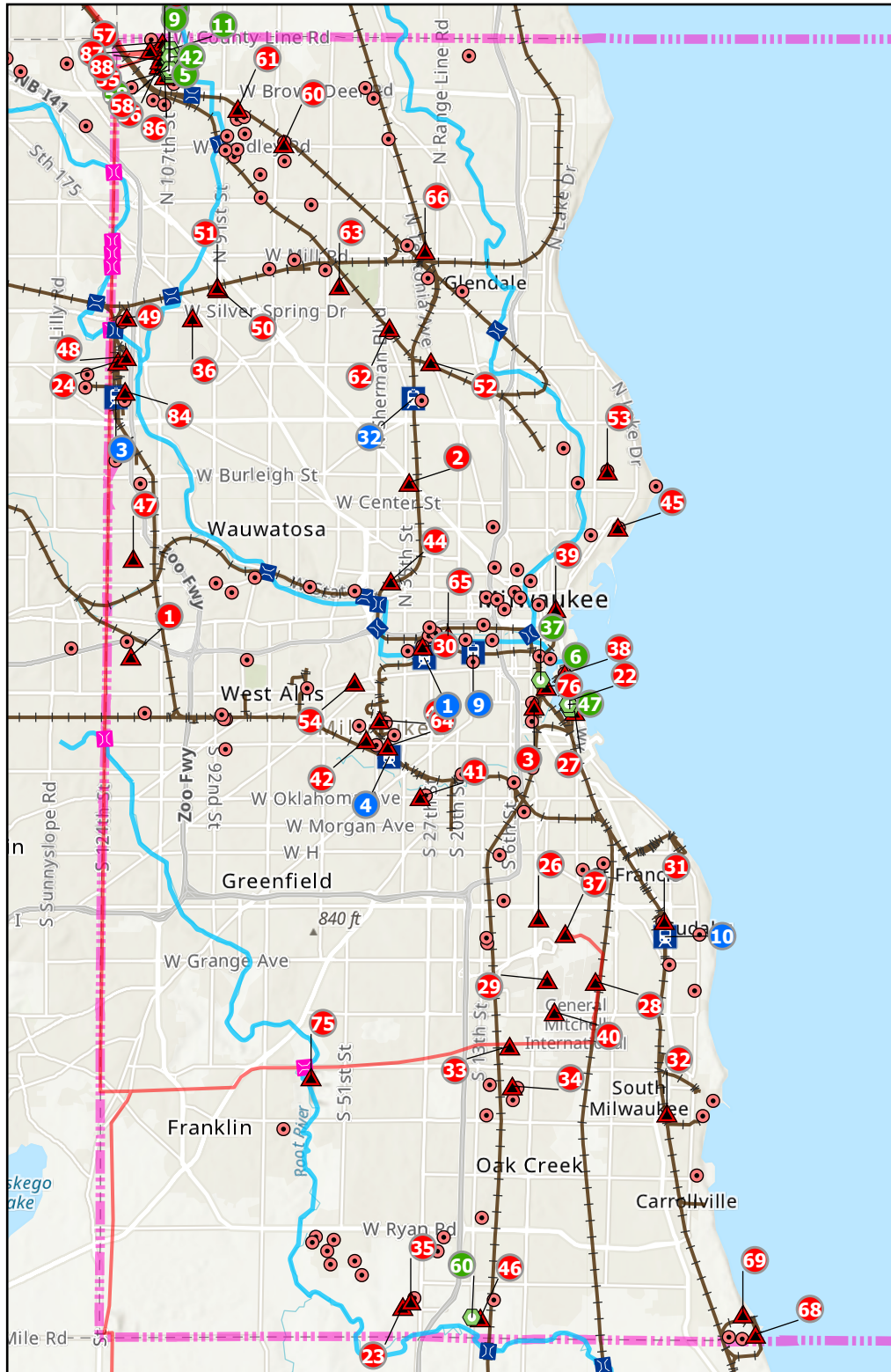
## Railroad Yards

ID	NAME
17	SHEBOYGAN YARD
18	MANITOWOC YARD

## Counties in Zone 1:

- Manitowoc
- Sheboygan
- Ozaukee

# SOUTHEAST WISCONSIN SUB-AREA - MILWAUKEE COUNTY



## Legend

- FRP Facilities
- Aboveground Storage Tanks
- Hazardous Materials Storage
- Pipeline River Crossing
- Petroleum Pipelines
- Railroads
- Rivers
- County Boundary

## Aboveground Storage Tanks

ID	NAME
1	Jacobus Petroleum Products, Inc.
2	MCTS - Fond Du Lac Garage
3	MCTS - Kinnickinnic Garage
22	U.S. Oil - Milwaukee Jones Island Terminal
23	Future Environmental, Inc.
24	Union Pacific Railroad - Milwaukee Yard
26	Menzies Aviation
27	South Harbor Milwaukee LLC
28	WI Air National Guard/128th Air Refuel
29	Johnson Controls, Inc.
30	Rexnord Gear Group
31	Smithfield Packaged Meats Corp.
32	Eaton's Cooper Power Systems
33	United Parcel Service
34	Henkel Corp.
35	XPO Logistics Freight, Inc. - XML
36	Timmerman Airport
37	General Mitchell International Airport
38	Jones Island Water Reclamation Facility
39	Northwestern Mutual
40	NMAO South Hangar
41	Aurora St. Luke's Medical Center
42	General Electric Medical Systems
43	Speedway 4100
44	Elementis Specialties, Inc.
45	Ascension Columbia St. Mary's Milw.
46	PPG Industries, Inc.
47	City Of Wauwatosa
48	Stark Pavement Corp., Inc.
49	Speedway 4214
50	Kaul Oil Co.
51	Rote Oil Milwaukee Bulk Plant
52	Benz Oil, Inc.
53	University Of Wisconsin - Milwaukee
54	Dept. Of Veterans Affairs
55	Flint Hills Resources Pine Bend, LLC - Milwaukee Facility
56	U.S. Oil Milwaukee West Terminal
57	U.S. Oil Milwaukee North Terminal
58	U.S. Oil Milwaukee South Terminal
59	U.S. Oil Milwaukee Central Terminal
60	Hydrite Chemical Co.
61	Hydrite Chemical Co
62	Lube-Tech & Partners, LLC
63	PetroChoice, LLC
64	Milwaukee City Lincoln Garage
65	Milwaukee City Central Garage
66	Dyk Automotive, LLC
68	Oak Creek Power Plant
69	Elm Road Generating Station
75	Franklin Asphalt Plants - C3 And C7
76	CRM Milwaukee Tank Farm
84	Brenntag Great Lakes, LLC
86	Buckeye Terminals, LLC
87	Granville Station
88	CITGO - Milwaukee Terminal

## FRP Facilities

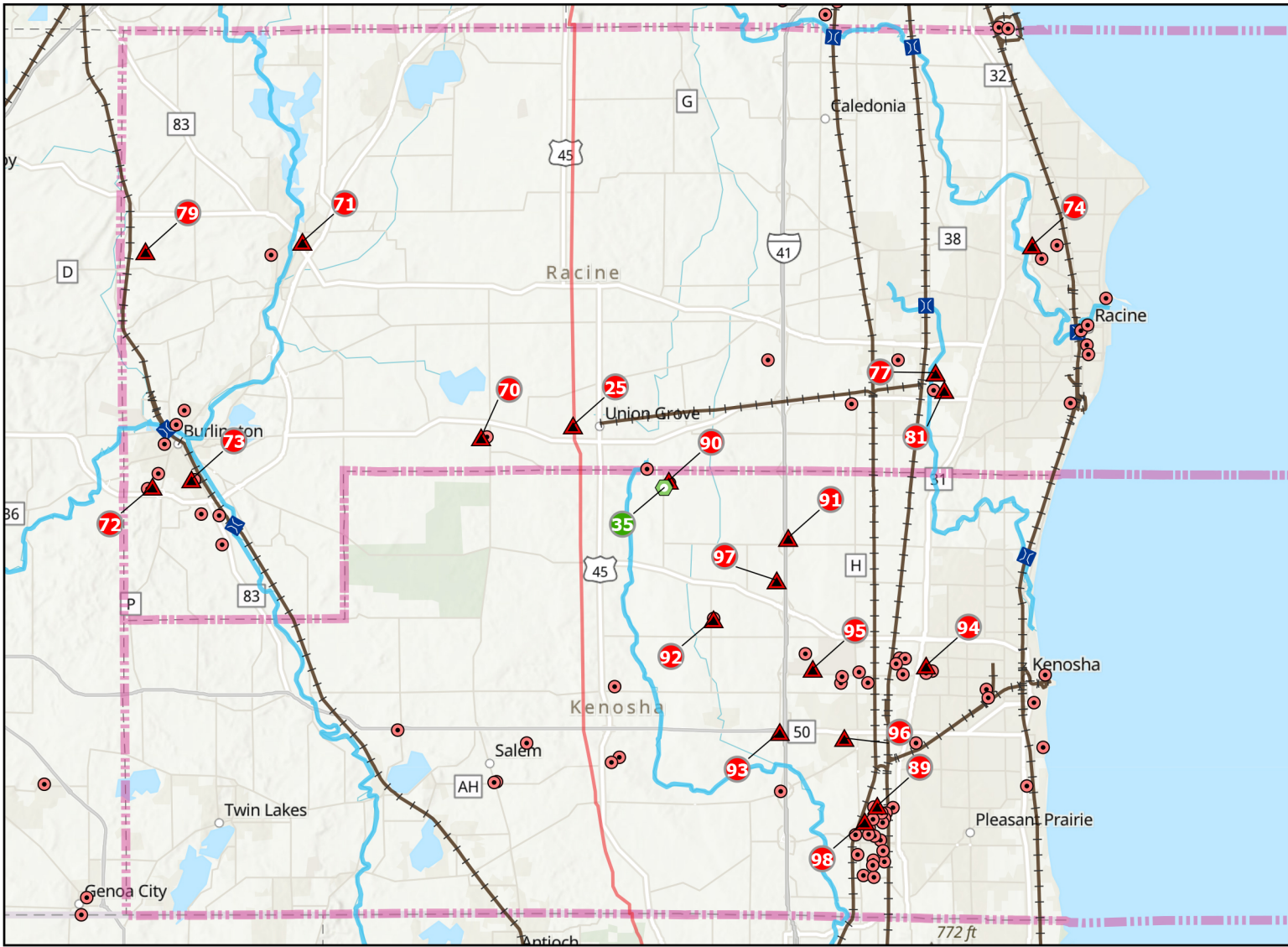
ID	NAME
4	CITGO PETROLEUM CORP
5	SHELL OIL CO
6	JACOBUS PETROLEUM PRODUCTS, INC.
9	MARATHON PETROLEUM CO - MILWAUKEE WI TERMINAL
11	US VENTURE, INC.(SEE MAILING ADDRESS)
37	MARINE CENTER ASPHALT BULK STORAGE FACILITY
42	FLINT HILLS RESOURCES PINE BEND LLC MILWAUKEE TERMINAL
47	IFI TERMINAL MILWAUKEE LLC
58	US VENTURE INC (SEE MAILING ADDRESS)
60	PPG INDUSTRIES INC-OAK CREEK

## Railroad Yards

ID	NAME
1	AIRLINE YARD
3	BUTLER YARD
4	MITCHELL YARD
9	MUSKEGO YARD
10	CUDAHY YARD
32	GLENDALE YARD



# SOUTHEAST WISCONSIN SUB-AREA RACINE COUNTY AND KENOSHA COUNTY



**Aboveground Storage Tanks**

ID	NAME	ID	NAME
25	Landmark - Union Grove Bulk Plant	90	Paris Generating Station
70	Conserv FS, Inc.	91	Jerry Willkomm, Inc.
71	Franksville Oil & LP Gas Co. Inc.	92	Kenosha Beef International
72	Ardagh Glass Inc.	93	Speedway 7465
73	Nestle Chocolate & Confections	94	Wisconsin Fuel & Heating, Inc.
74	Racine Commercial Airport	95	Danalan, LLC
77	Racine Asphalt Plant - C31	96	Costco Wholesale #1198
79	Honey Creek Aggregate Site And Asphalt Plant - C29	97	Paris Asphalt Plant - C23
81	CNH Industrial America, LLC	98	EMCO Chemical Distributors
89	Pleasant Prairie Power Plant		

## FRP Facilities

ID	NAME
35	WISCONSIN ELECTRIC POWER

## Railroad Yards

(N/A)

## Legend

- ◆ FRP Facilities
- ▲ Aboveground Storage Tanks
- Hazardous Materials Storage
- Pipeline River Crossing
- Petroleum Pipelines
- +— RailRoads
- ~ Rivers
- ▤ County Boundary