

Air Monitoring Summary Tables

The tables below summarize preliminary air monitoring data collected using EPA DustTrak DRX instruments.

Project Name: Shorewood Farm Supply Fire ER
Date/Time: 07/21/2022 17:00 to 07/22/2022 12:00

Weather

Temperature: 64 - 91 °F
Wind Speed: 0 to 22 miles per hour
Wind Direction: West
Conditions: Fair to Partly Cloudy

Upwind Monitoring Station				
Instrument	Analyte	24-Hour Average Concentration* (mg/m ³)	AQI	AQI Category
DustTrak (S/N: 8533194207)	PM _{2.5} (mg/m ³)	0.016 mg/m ³	59	Moderate

Downwind Air Monitoring Station				
Instrument	Analyte	24-Hour Average Concentration* (mg/m ³)	AQI	AQI Category
DustTrak (S/N: 8533153917)	PM _{2.5} (mg/m ³)	0.020 mg/m ³	68	Moderate

Comments	
Start and stop times for each air monitoring instrument varies. The monitoring period listed is approximate.	
Air monitoring is not performed during inclement weather conditions/rain and thunderstorms.	

AQI Value	AQI Category	Description of Air Quality
0 to 50	Good	Air quality is satisfactory, and air pollution poses little or no risk.
51 to 100	Moderate	Air quality is acceptable. However, there may be a risk for some people, particularly those who are unusually sensitive to air pollution.
101 to 150	Unhealthy for Sensitive Groups	Members of sensitive groups may experience health effects. The general public is less likely to be affected.
151 to 200	Unhealthy	Some members of the general public may experience health effects; members of sensitive groups may experience more serious health effects.
201 to 300	Very Unhealthy	Health alert: The risk of health effects is increased for everyone.
301 to 500	Hazardous	Health warning of emergency conditions: everyone is more likely to be affected.

Notes:

°F - Degrees Fahrenheit

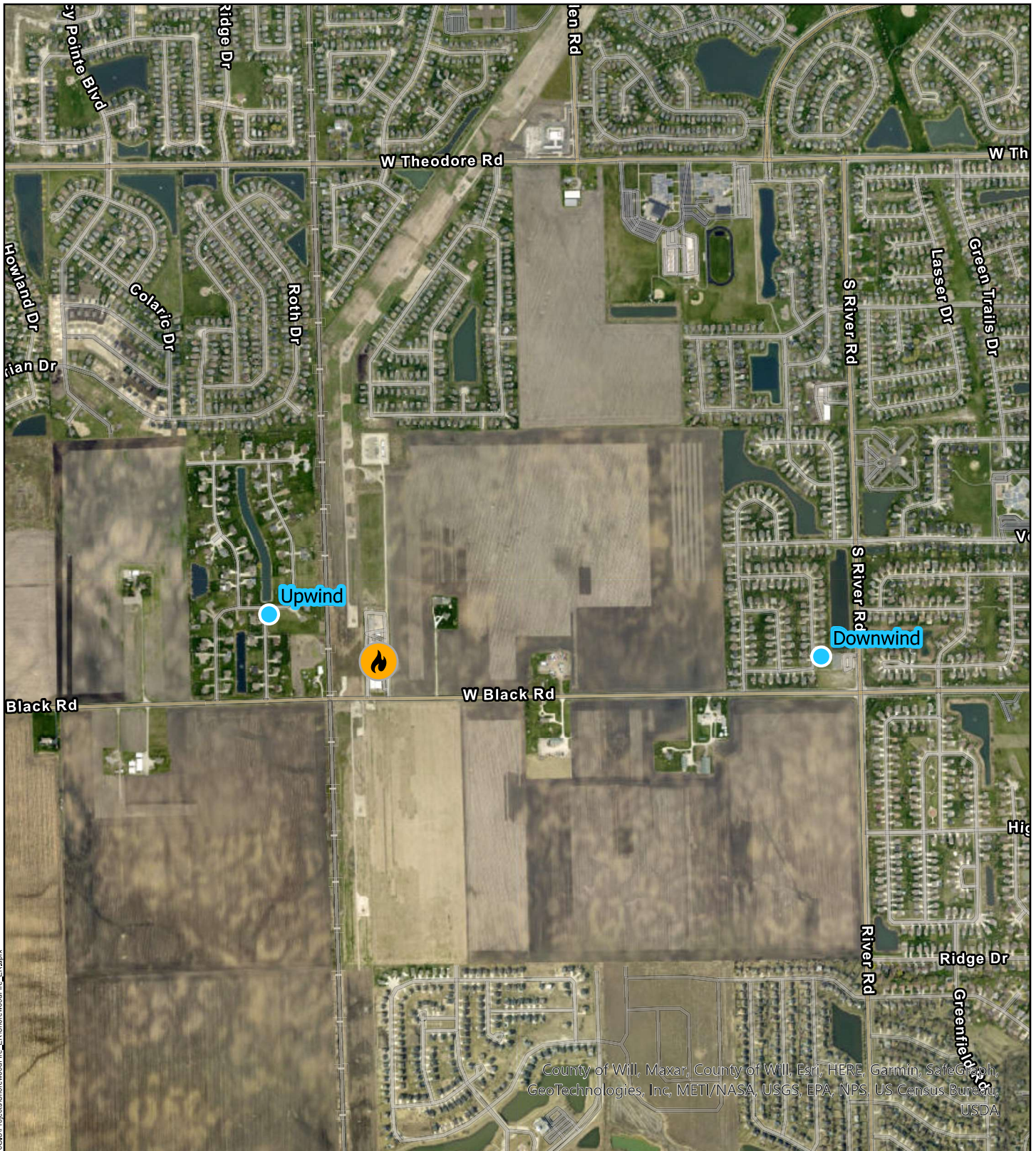
AQI - Air Quality Index

mg/m³ - Milligrams per cubic meter

PM_{2.5} - Particles that are 2.5 micrometers and smaller

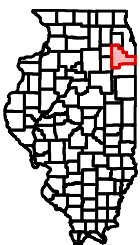
S/N - Serial number

* - Initial AQI calculations are based on approximately 19 hours of data. Future iterations will use full 24-hour datasets.





County of Will, Maxar, County of Will, Esri, HERE, Garmin, SafeGraph, GeoTechnologies, Inc, METI/NASA, USGS, EPA, NPS, US Census Bureau, USDA

Site Location



Legend

-  Shorewood Fire Location
-  Continuous Air Monitoring Stations



0 0.25 0.5



Miles

Shorewood Farm Supply Fire
Shorewood, Will County, Illinois

Figure 1
Continuous Air Monitoring
Station Locations



TETRA TECH

Prepared For: EPA

Prepared By: Tetra Tech Inc.