



October 28, 2022

David Romero  
EPA Federal On-Scene Coordinator  
U.S. Environmental Protection Agency, Region 8  
1595 Wynkoop St.  
Denver, Colorado, 80202

Subject: **Site Trip Report**  
**Ogden Mercury Site Trip Report**  
**1851 Valley Drive, Weber County, Utah**  
**U.S. EPA Region 8 START V, Contract No. 68HE0820D0001**  
**Task Order No. 68HE0820F0071**  
**TD No. 2071-2208-15**  
**SSID: B8E4**

Dear Mr. Romero:

As tasked by EPA task order 2071-2208-15, under the US EPA Region 8 START V contract, Tetra Tech EM Inc. Superfund Technical Assessment and Response Team (START) is submitting this Emergency Response Trip Report generated for the Ogden Mercury Site located at 1851 Valley Drive, Weber County, Utah. The overall scope of this technical direction (TD) was to provide technical support during emergency response activities. Specific tasking elements of this Technical Direction (TD) included mercury vapor monitoring, written and photographic documentation of response activities, and documentation of personal items determined to be contaminated.

## **SITE BACKGROUND INFORMATION**

On August 31, 2022, Weber County Health and Utah DEQ requested assistance from the U.S. Environmental Protection Agency (EPA) Region 8 to assess an open space area where an individual possessing elemental mercury had been living and panning for gold. The individual had been detained by Officer Hassig of the Ogden Police Department on August 19, 2022, for outstanding warrants. The arrest was made near the individual's camp ("Individual's Encampment"), about a quarter mile northwest of Rainbow Garden Center located at 1851 Valley Drive in Ogden, Utah see Figure 1). On August 31, EPA deployed a Federal On-Scene Coordinator and support contractors to provide technical direction, complete an assessment of the area, coordinate with stakeholders, and provide direction/oversight of cleanup operations.

## **PHYSICAL LOCATION AND CHARACTERISTICS**

The site is located about a quarter mile northwest of Rainbow Garden Center located at 1851 Valley Drive in Ogden, Utah (see Figure 1 in Enclosure 1). The site includes multiple encampments that a individual possessing elemental mercury (the individual) habituated.

## EMERGENCY RESPONSE ACTIVITIES

On September 1, 2022, EPA and START completed a site-walk of two primary areas: one area (“individual’s chimney encampment”) where the individual had built a large chimney furnace located southeast of 1851 Valley Drive; and a second area, the “individual’s encampment”, located across Canyon Drive and northwest of Rainbow Gardens Center (see Figure 2). Prior to initiating the site-walk, START verified calibration on a Lumex RA-915M mercury vapor analyzer (Lumex) and recorded a background concentration of 5 ng/m<sup>3</sup>, then began screening the two areas identified above. A summary of the screening activities conducted on September 1 is provided below:

- START discovered a blue and gray bottle, and mercury vapor readings of 328 nanograms per cubic meter (ng/m<sup>3</sup>) were recorded around the lid. START opened the bottle and recorded mercury vapor readings greater than 50,000 ng/m<sup>3</sup> from the headspace. The bottle was double-bagged and turned over to the City of Ogden Health Department for disposal.
- START screened five other encampments in the surrounding area but did not record any readings above 200 ng/m<sup>3</sup>, with readings ranging from 9 to 197 ng/m<sup>3</sup>.
- START returned to the Individual’s Chimney Encampment, and recorded readings ranging from 9 to 14 ng/m<sup>3</sup>.
- START then screened the City of Ogden Code Enforcement vehicle that was used during the removal of the individual’s belongings 2 weeks prior on August 19<sup>th</sup>. START recorded readings greater than 4,500 ng/m<sup>3</sup> within the breathing zone of the truck. START removed the cloth seat covers and rubber floor mats, double bagged them, and turned them over to the City of Ogden Health Department for disposal. The truck was heated and vented, and readings decreased to 300 ng/m<sup>3</sup> in the breathing zone.
- START screened the Ogden Code Services office space and hallway, and recorded readings ranging from 24 to 310 ng/m<sup>3</sup>.
- START then moved to the Weber County corrections facility and screened the individual’s clothing. Mercury vapor readings ranged from 5,500 to 7,000 ng/m<sup>3</sup>. EPA advised the correction facility to vent the belongings on the roof of the building overnight to reduce mercury vapor concentrations. The belongings were rescreened the following day.

On Friday, September 2, 2022, at noon, START and EPA returned to the Weber County Correction Facility to rescreen the individual’s clothing. These screening activities are summarized below.

- Mercury vapor readings up to 30,000 ng/m<sup>3</sup> were recorded from the bag containing the individual’s personal belongings. START moved the individual’s shoes into a separate bag and allowed the two bags to vent for a few minutes. START then rescreened the bag containing the clothing, and recorded readings up to 21,000 ng/m<sup>3</sup>. START then screened the bag containing the individual’s shoes, and recorded readings up to 8,000 ng/m<sup>3</sup>.
- Following EPA’s instructions, START triple-bagged the individual’s belongings in contractor bags and returned them to the Weber County Correction Facility’s possession. The City of Ogden Health Department will handle the disposal of these items.

While EPA and START began demobilizing from the Weber County Correction Facility, Officer Hassig called EPA and START to brief them on the interview he conducted with the individual. During the interview, the individual provided two additional encampment locations (“individual’s roadside encampment” and “individual’s riverside encampment”) where he had the elemental mercury in his

possession. EPA, START, and Ogden Police reconvened to screen the two encampment locations. These additional activities are summarized below:

- START recorded mercury vapor readings in soil up to 1,200 ng/m<sup>3</sup> at the Individual's Roadside Encampment where the individual stated he had found the elemental mercury in a soil mixture inside a plastic, one-gallon container.
- START recorded readings up to 9 ng/m<sup>3</sup> at the Individual's Riverside Encampment, where the individual stated he panned the plastic container's contents to separate the elemental mercury from the soil mixture. It is at this second location that the individual stated that he transferred the elemental mercury from the gallon container into the blue and gray bottle that was screened on Thursday, September 1, 2022.

After the screening of these two encampment locations, EPA and START demobilized from the site.

A complete record of screened items can be found in the logbook notes in Enclosure 2.

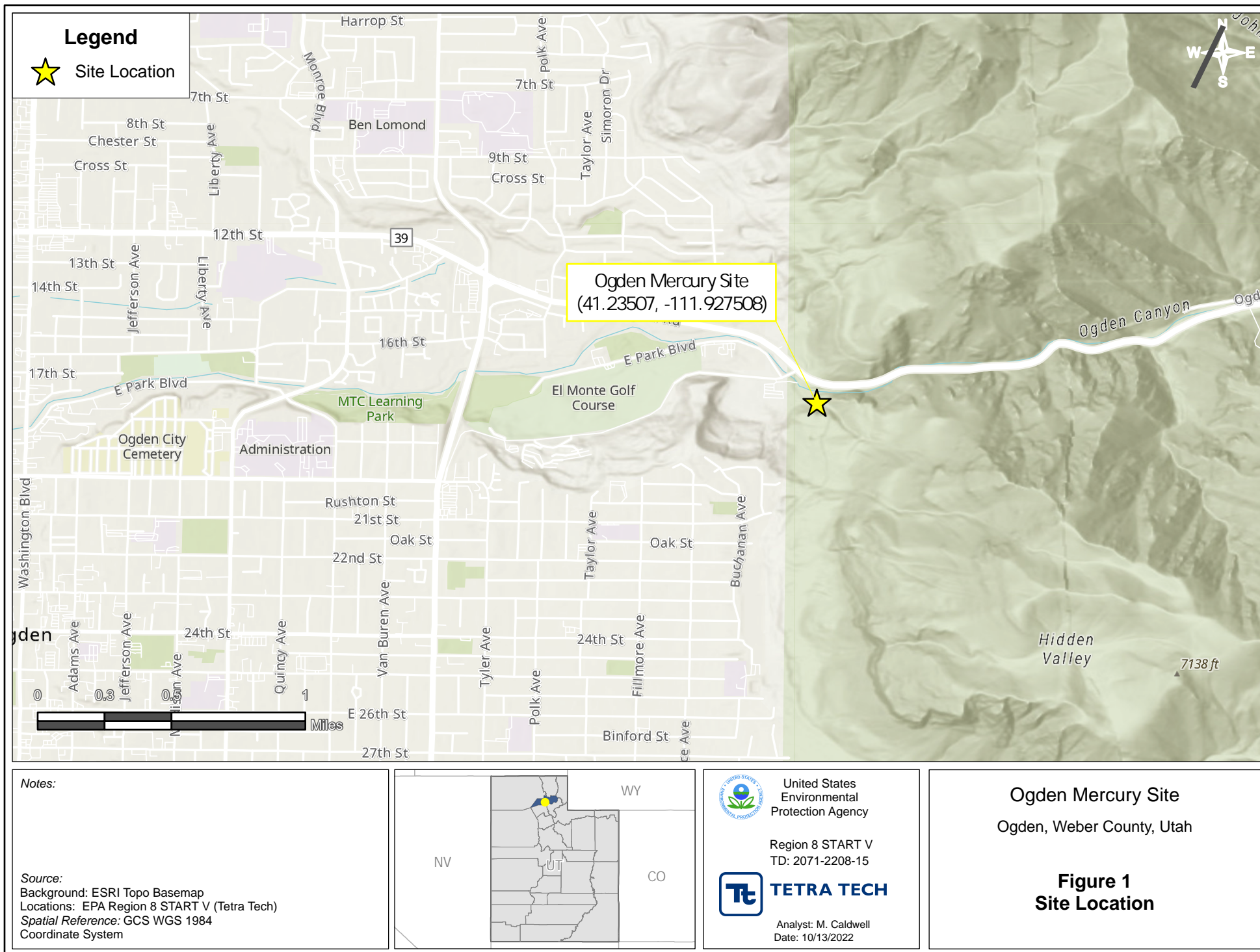
Enclosures (2):

Enclosure 1 (Figures)

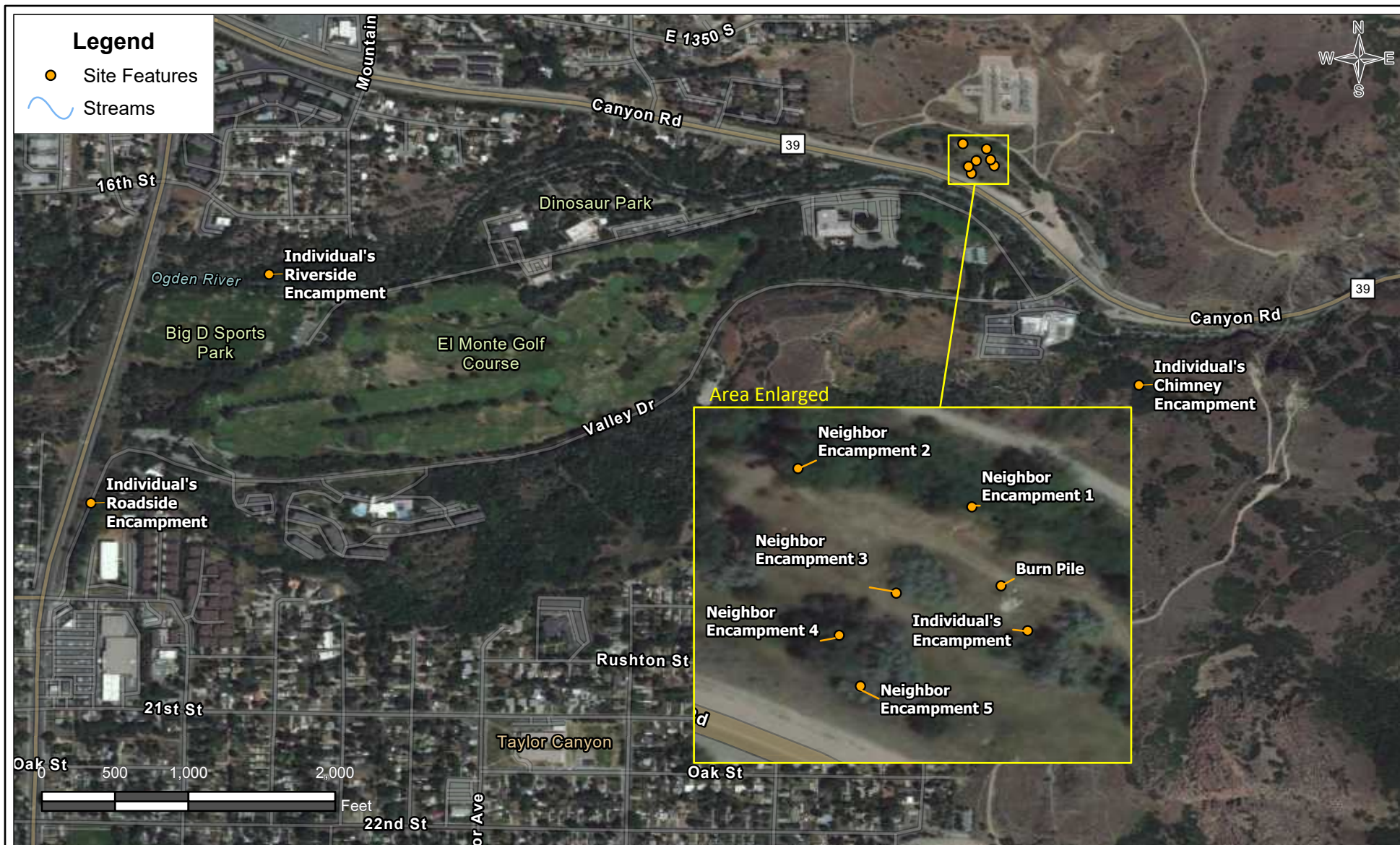
Enclosure 2 (Logbook Notes)

**ENCLOSURE 1**

**FIGURES (2 PAGES)**

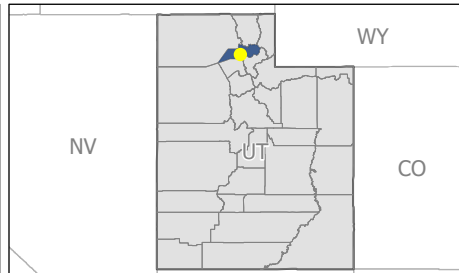






**Notes:**

**Source:**  
 Background: ESRI Aerial Hybrid Basemap  
 Locations: EPA Region 8 START V (Tetra Tech)  
 Streams: NHD Cached Rest Service  
 Spatial Reference: GCS WGS 1984  
 Coordinate System



United States  
Environmental  
Protection Agency

Region 8 START V  
TD: 2071-2208-15



**TETRA TECH**

Analyst: M. Caldwell  
Date: 10/25/2022

Ogden Mercury Site  
Ogden, Weber County, Utah

**Figure 2**  
**Site Features**

**ENCLOSURE 2**

**LOGBOOK NOTES (8 PAGES)**



—DEFYING—  
MOTHER NATURE®

SINCE 1916



All components of  
this product are recyclable

**Rite in the Rain**

A patented, environmentally  
responsible, all-weather writing paper  
that sheds water and enables you to  
write anywhere, in any weather.

Using a pencil or all-weather pen,  
*Rite in the Rain* ensures that your  
notes survive the rigors of the field,  
regardless of the conditions.

© 2021

JL DARLING LLC  
Tacoma, WA 98424-1017 USA  
[www.RiteintheRain.com](http://www.RiteintheRain.com)

**Item No. 371FX**

NSN: 7530-01-642-7769  
ISBN: 978-1-60134-186-0

Made in the USA  
US Pat No. 6,863,940



25037155

Ogden  
Mercury  
Site



*Rite in the Rain®*

ALL-WEATHER  
**UNIVERSAL**

Nº 371FX

TD: 2071-2208-15

9/1/2022-9/2/2022



The logo is enclosed in a decorative, hand-drawn rectangular border. At the top, it says "TACOMA, WA, USA" in a sans-serif font. Below that, in a smaller font, is "— EST. 1916 —". The main text "Rite in the Rain" is written in a large, elegant, cursive script. To the right of the script is a registered trademark symbol (®). At the bottom, it says "— DEFYING MOTHER NATURE —" in a sans-serif font, flanked by horizontal lines.

Logbook Tracking Number 1075  
Site Name Ogden Mercury  
Issue to Lucas Montbouchet  
Date Issued August 31, 2022  
TD # 2071-2208-15



**RITE  
GREEN**



Archival  
paper



<sup>2</sup> Thursday, September 1, 2022 - Ogden Mercury Site

Mostly Sunny, high 95, Wind ESE 10mph

Onsite: M. Ericson, L. Montech, Officer Hassig is

Sheri Waters, Officer Dyster,

0900 START arrives at Rainbow Garden Center

0905 D. Romero and UPD and Health Dept. discuss that about 2 TBS were found. We will be screening the encampment area first and then will screen the location of the arrest.

0920 Begin hiking to camp location (chimney)

0925 Arrive to camp location. All personal items have been removed on 8/19/22.

Photo documentation airdropped to START.

Officer stated that mercury was in a plastic pue black open top opening with CMS Engineering Labs label on container

1005 Drive to second location where arrest and discovery of mercury occurred.

1014 START begins warming equipment

01088 Lumex and Jerome CO1060 Ops and zero check completed on Jerome. ~~pass~~

Jerome unable to zero cal; requires Regen.

Lumex D% 0; pass ops check

1036 START begins screening. Begins with Officer Hassig patrol car. Readings remained background at 4 ng/m<sup>3</sup>. START

Scale: 1 square =                      S. Montouché 9-1-2022

Thursday, September 1, 2022

3

Screened back seat, seat belt, and floorboard of patrol car.

1042 START screens living location at the time of arrest. Breathing zone = 5 ng/m<sup>3</sup>; Cardboard located in center of living area = 5 ng/m<sup>3</sup>; Clothing, glove, and debris on ground = 5 ng/m<sup>3</sup>; top mattress and bottom mattress = 5 ng/m<sup>3</sup>; Black shirt on mattress = 6 ng/m<sup>3</sup>; Blue bottle on open located on ground = 328 ng/m<sup>3</sup>; START opens bottle interior reading greater than 50,000 ng/m<sup>3</sup>; Smoking pipe = 91 ng/m<sup>3</sup>; Soil around bottle = 306 ng/m<sup>3</sup>

1103 START head to other locations.

1110 Begin screening second location. clothes at entrance = 8 ng/m<sup>3</sup>; Trash can = 9 ng/m<sup>3</sup>; Pile of clothes = 11 ng/m<sup>3</sup>; Tote of clothes is at 20 ng/m<sup>3</sup>; orange bucket = 9 ng/m<sup>3</sup>; Black planter = 9 ng/m<sup>3</sup>; orange suitcase is at 10 ng/m<sup>3</sup>; clothes and blanket next to canal = 9 ng/m<sup>3</sup>; pile of cans, box, mop head, and hoodie next to canal = 9 ng/m<sup>3</sup>; blanket and mug on ground = 9 ng/m<sup>3</sup>; grey foam block = 12 ng/m<sup>3</sup>; breathing zone at 10 ng/m<sup>3</sup>; After screening initial bottle the Lumex background levels changed

Scale: 1 square =                      S. Montouché 9-1-2022 *Note in the Rain.*



4 Thursday, September 1, 2022

From 4-5 ng/m<sup>3</sup> upto 9-11 ng/m<sup>3</sup>;  
Sprite bottle at entrance = 11 ng/m<sup>3</sup>.

1126 Begin screen of third location;  
Breathing Zone at 10 ng/m<sup>3</sup>; Clear bottles  
and debris in third location at 9 ng/m<sup>3</sup>;

Blue rug, rocks, and debris = 9 ng/m<sup>3</sup>.

1131 Begin screening fourth location;  
Black bin at 13 ng/m<sup>3</sup> - Bin was imm-  
ediately removed by homeless man on-  
site; wires on ground = 97 ng/m<sup>3</sup>;

Tarp (white), foam mattress pad pile = 11 ng/m<sup>3</sup>;  
pile of shoes and clothes at = 24 ng/m<sup>3</sup>; Red  
bag with metal hangers = 60 ng/m<sup>3</sup>;

orange camping backpack = 128 ng/m<sup>3</sup>;  
yellow rope, white tire; clothes at = 194 ng/m<sup>3</sup>

Right side of cart = 15 ng/m<sup>3</sup>; Red bag =  
64 ng/m<sup>3</sup>; Wheel barrow area = 15 ng/m<sup>3</sup>;  
black bucket = 36 ng/m<sup>3</sup>; plastic trash bag =  
37 ng/m<sup>3</sup>; left side of cart = 111 ng/m<sup>3</sup>

1145 Begin fifth location; Breathing  
Zone = 10 ng/m<sup>3</sup>; Grey tarp pile = 10 ng/m<sup>3</sup>;  
pile of clothes (blue & grey) = 9 ng/m<sup>3</sup>;  
pile of sheet, clothes, bucket = 9 ng/m<sup>3</sup>;

Clear bucket and tote at = 101 ng/m<sup>3</sup>;  
Tent = 120 ng/m<sup>3</sup>; metal pans = 20 ng/m<sup>3</sup>

Scale: 1 square =

Montauke - 9-1-2022

5

Thursday, September 1, 2022

1158 START screen six location known  
as burin pile at 13-15 ng/m<sup>3</sup>.

1200 D. Romero states no need to do  
anything regarding location 1-6; D.  
Romero tells officer Hassig that ~~he~~<sup>PD</sup> will  
try to call an ask about screening  
~~their~~<sup>parent</sup> home. D. Romero task START  
to provide a summary of findings for  
Pol rep.

1208 C. Trenea with Ogden City and  
START pick up blue bottle from first  
location. START is double glove; C. Trenea  
holds bag, bottle and pipe and gloves used  
are double bagged with Husky 3mil  
contractor bag.

1215 START screen asphalt pad where  
container was placed at 9 ng/m<sup>3</sup>.

1220 START returns to chimney location

1237 Begin screening chimney location (location  
7). Breathing Zone = 10 ng/m<sup>3</sup>. Straw area  
where ~~tent~~<sup>tent</sup> location = 9 ng/m<sup>3</sup>; ground along  
creek = 9 ng/m<sup>3</sup>

1240 Officer Hassig states that Mr. Chauncey  
Starks is not concerned of mercury. Their  
son does not visit often. Father

Scale: 1 square =

Montauke - 9-1-2022  
*Kill in the Rain.*



<sup>6</sup> Thursday, September 1st, 2022

has declined screening at their home at 1178 Oak Street. Discussion occurred in person. D. Romero agrees no need to further push or investigate home.

1243 Inside chimney at =  $14 \text{ ng/m}^3$ .

Ogden city of engineering have their EnviroCare group collect water samples at top of creek and at top of culvert.

Surrounding area uphill of chimney is at  $9 \text{ ng/m}^3$ ; Shampoo bottle in creek =  $9 \text{ ng}$

Chimney camp location is SE from Rainbow garden center. location 1-6 is NW from Rainbow garden center.

1300 START heads to location of truck used to remove personal items.

Note: Officer Hassig told START that at the time of arrest. The individual was holding the blue bottle with elevated readings in one hand and the black open top container in the other hand. black open top container had elemental mercury init.

1313 arrive at truck location. Initial screening at  $4,500 \text{ ng/m}^3$ ; Screening

Scale: 1 square = Montarchet 9-1-2022

Thursday, September 1st, 2022

7

of floor board (driver side) =  $6,500 \text{ ng/m}^3$ ; Driver seat =  $1,000 \text{ ng/m}^3$ ; Driver side passenger seat =  $414 \text{ ng/m}^3$ ; high vis vest on Driver seat =  $300 \text{ ng/m}^3$ ; Driver side Passenger floor board =  $200 \text{ ng/m}^3$ ; passenger floor board =  $400 \text{ ng/m}^3$ ; passenger seat =  $108 \text{ ng/m}^3$ ; passenger back seat  $50 \text{ ng/m}^3$ ; passenger back seat floor board =  $100 \text{ ng/m}^3$ ; Return to driver side floor board =  $197 \text{ ng/m}^3$ ; Driver seat =  $320 \text{ ng/m}^3$ . D. Romero tasks START to remove seat covers, floor mats from truck.

1352 START finishes removing all covers and mats and double bagged. All items (personal) put in back of truck bed to bake in sun.

1404 START begins screening office. The Breathing zone =  $27 \text{ ng/m}^3$ ; floor in hallway between =  $155 \text{ ng/m}^3$ ; Breathing zone near cubicles =  $24 \text{ ng/m}^3$ . D. Romero stated to only do breathing zone. Breathing zone at other end of hallway =  $25 \text{ ng/m}^3$ . Office space breathing zone =  $34 \text{ ng/m}^3$ ; floor in office space =  $157 \text{ ng/m}^3$ . C. Trema Desk floor =  $310 \text{ ng/m}^3$ ; chair =  $70 \text{ ng/m}^3$ .

1413 Break for lunch work king discuss

Scale: 1 square = Montarchet 9-1-2022



8 Thursday, September 1, 2022

1536 START conducts Dvalve check on Lumex. D%<sup>9</sup> for Equip. CØ1Ø88. START & D. Romero agree to switch to Lumex CØ1Ø88. Ops check passed and D% is 3%.

1548 START rescreens Ogden Code Enforcement truck. Breathing Zone is at Peak value at  $1,800 \text{ ng/m}^3$  and average at  $853 \text{ ng/m}^3$  which is immediately after opening truck; floor board is  $120 \text{ ng/m}^3$ . D. Romero states to roll windows down and we will return in an hour to rescan.

1605 START and EPA head to jail.

1626 START and EPA arrive at Weber County Jail. Officer Lockwood escort us back to evidence room.

1437 Screen bag of boots, clothes =  $7,000 \text{ ng/m}^3$ ; Jean jacket =  $5,500 \text{ ng/m}^3$ ; Zipped bag of personal items =  $1,800 \text{ ng/m}^3$ .

D. Romero informed Health Dept. and states it should be aired out and that he is not a risk to the other inmates or the jail. Health Dept. has not made a decision on how to proceed.

Scale: 1 square =

S. Monvauchet 9-1-2022

Thursday, September 1, 2022

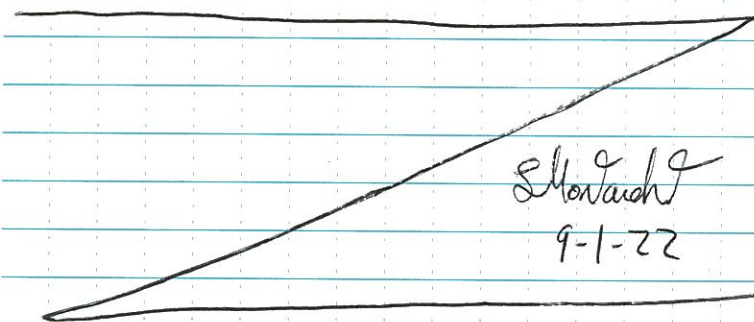
9

D. Romero states our departure is going to be first thing in the morning because there is nothing ~~we~~ else we can do. START informed officers to double bag inmates belongings and contractor bags are best. Jail recieved permission to lay all items on the roof. D. Romero states will ~~be~~ return at noon to rescreen after clothes have been aired out overnight.

1722 START and EPA Return to Code Enforcement truck

1725 Screening truck had a peak of  $300 \text{ ng/m}^3$  for breathing zone. The Ogden building service car that is used by C. Tremea screened at  $5 \text{ ng/m}^3$ .

1737 START departs location



Scale: 1 square =

Rite in the Rain.



10 Friday, September 2nd, 2022

0950 - START and EPA discuss plan for the day. START and EPA will meet at Weber County Correctional Facility to rescreen individuals clothing that has been ~~blm~~ hung on the roof of the facility. D. Romero ~~stated~~ that LM had discussions with Ogden Code Services and health department and all parties agreed screening of clothes, shoes and personal vehicles was unnecessary.

1100 - START mobilizes to Weber County Correctional Facility.

1140 - START warms up and cal check on Lumex unit CØ1Ø89, the D% value is 0.

1155 - START rescreens individuals personal items. Readings for bag of clothes =  $30,000 \text{ ng/m}^3$ ; belt with metal =  $1,200 \text{ ng/m}^3$ ; paper bag of personal items =  $30 \text{ ng/m}^3$  (metal chain).

D. Romero asks to separate shoes, into separate bag and to open clothes bag. Clothes are rescreened at  $21,000 \text{ ng/m}^3$ . Shoes are rescreened at  $8,000 \text{ ng/m}^3$ . Clothes, shoes, and belt are ~~double~~ LM

Scale: 1 square =

S. Montouchet 9-2-2022 kriplo

Friday, September 2, 2022

11

bagged into one consolidated bag and return to Weber County Correctional Facility. D. Romero will notify the City of Ogden Health Department. The City of Ogden Health Department will handle disposal.

1215 START departs from Site and demobe to Denver, CO.

1240 - Officer Hassig calls, EPA Added to call. Nicholas Stark states that he found Hg on 1300 Valley Drive a year ago. He took it to a second location and panned it to separate from soil and placed in blue/grey bottle.

1400 START and EPA meet Officer Hassig at Rainbow Garden Center. START starts up Lumex CØ1Ø89. Ops check passed; D value % = 1.

1411 START, EPA, Ogden PD arrive at Ogden M Temple, where individual ~~separated soil from elemental mercury~~ <sup>ME</sup> in 2<sup>ME</sup> said he found the elemental mercury in a gallon size container. Area was filled in during winter 2020-2022.

Scale: 1 square =

S. Montouchet 9-2-2022 *held in the rain.*



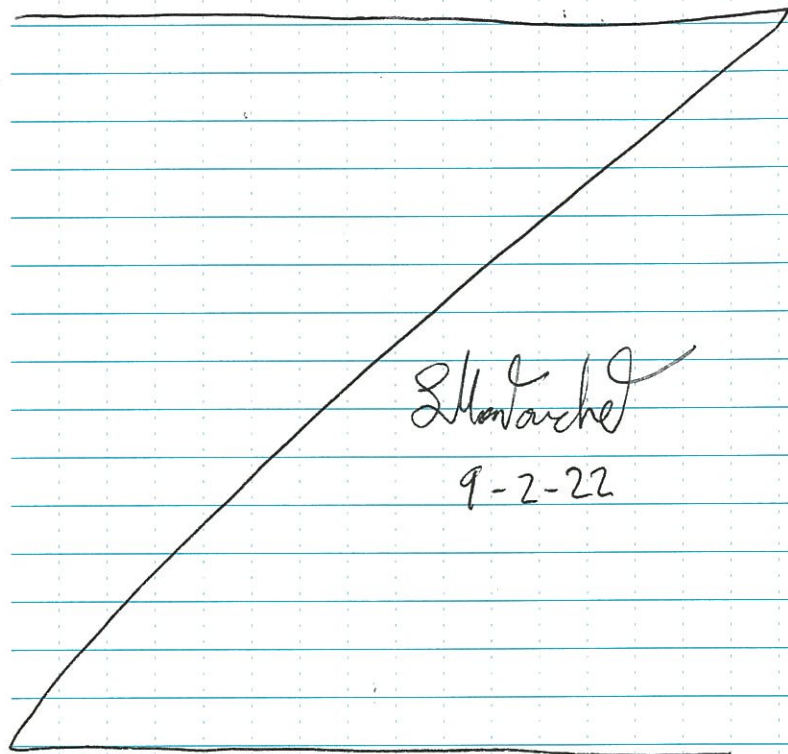
Friday, September 2, 2022

Soil of filled in area =  $1,200 \text{ ng/m}^3$  over  
a 30 sec interval.

1230 - Arrive at second location

where individual panned and separated  
elemental mercury from soil. The  
Average reading for entire area =  $\text{ng/m}^3$

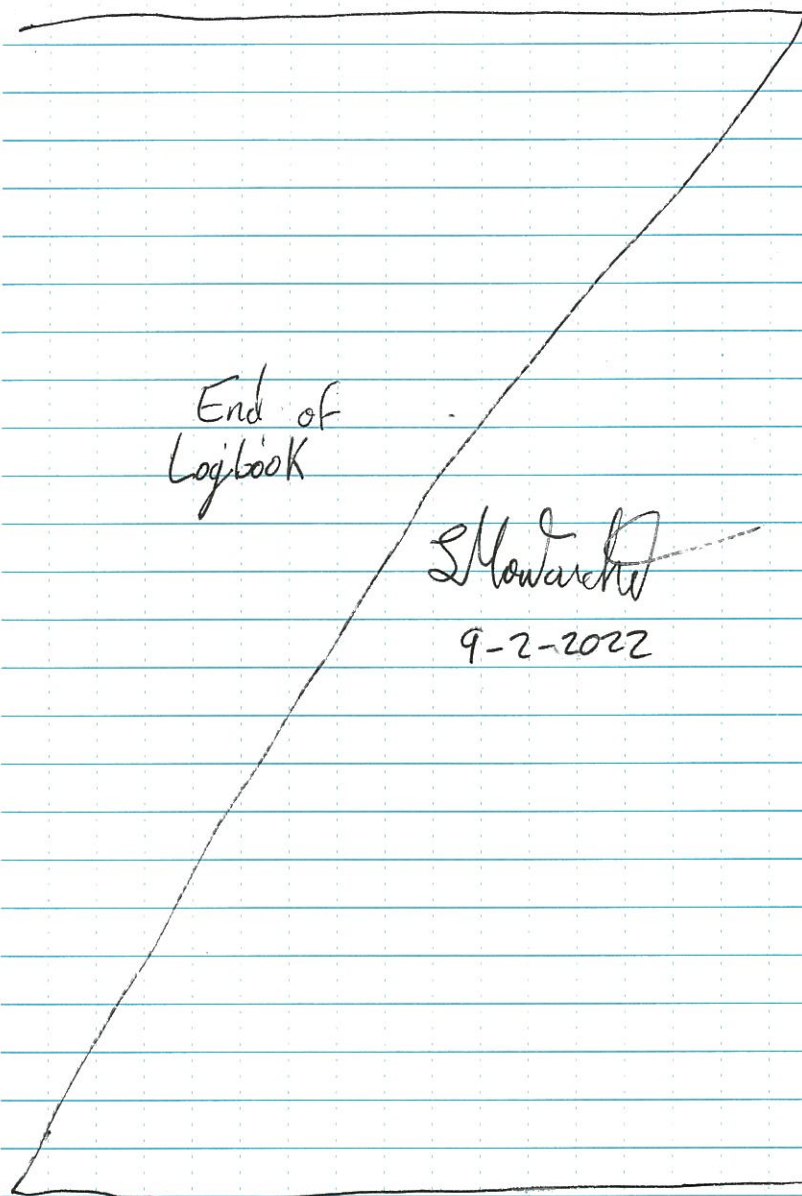
1450 - START demobilizes from site  
and departs for Denver, CO



SL Montarchet

9-2-22

Scale: 1 square = \_\_\_\_\_



End of  
Logbook

SL Montarchet

9-2-2022

Scale: 1 square = \_\_\_\_\_

Rite in the Rain