

Preliminary Air Monitoring Results Summary Table
Monitoring Period: 01/11/2023 16:23 to 01/11/2023 19:40
LaSalle Chemical Fire Site Emergency Response
LaSalle, LaSalle County, Illinois

Location	Date/Time	O ₂ (%)	LEL (%)	CO (ppm)	H ₂ S (ppm)	VOC (ppm)	HCl (ppm)	PM ₁₀ (mg/m ³)	PM _{2.5} (mg/m ³)	HCN (ppm)	Cl ₂ (ppm)
		Screening Levels ¹									
		19.5% to 23.5%	5%	25 ppm	10 ppm	0.5 ppm	2.5 ppm	2.5 mg/m ³	2.5 mg/m ³	5 ppm	0.5 ppm
A-01	1/11/2023 16:23	20.9	0.0	0.0	0.0	0.0	0.0	0.038	0.041	0.5	--
	1/11/2023 18:05	20.9	0.0	0.0	0.0	0.0	0.0	0.045	0.045	0.0	0.0
A-02	1/11/2023 16:48	20.9	0.0	0.0	--	0.0	0.0	0.035	0.035	0.0	--
	1/11/2023 18:32	20.9	0.0	0.0	0.0	0.0	0.0	0.050	0.052	0.0	0.0
A-03	1/11/2023 16:59	20.9	0.0	0.0	0.0	0.0	0.0	0.035	0.035	0.0	--
	1/11/2023 18:47	20.9	0.0	0.0	0.0	0.0	0.0	0.054	0.058	0.0	0.0
A-04	1/11/2023 17:10	20.9	0.0	0.0	0.0	0.0	0.0	0.039	0.039	0.0	--
	1/11/2023 18:59	20.9	0.0	0.0	0.0	0.0	0.0	0.065	0.067	0.0	0.0
	1/11/2023 19:27	--	--	0.0	--	--	--	--	--	--	--
SR-01	1/11/2023 19:40	20.9	0.0	0.0	0.0	0.0	0.0	0.054	0.057	0.0	0.0
SR-03	1/11/2023 19:31	20.9	0.0	0.0	0.0	0.0	0.0	0.044	0.050	0.0	0.0

Notes:

There were no detections above screening levels during the monitoring period (see above).

The fire was extinguished and smoldering by the evening hours of 1/11/2023.

¹ The preliminary screening levels used are one half of the Occupational Safety and Health Administration (OSHA) Permissible Exposure Limit (PEL). OSHA PELs are regulatory limits on the amount or concentration of a substance in the air meant to protect workers against the health effects of exposure to hazardous substances. The OSHA PEL for Particulates Not Otherwise Regulated (PNOR) respirable fraction was used for PM₁₀ and PM_{2.5}. The OSHA PEL for benzene was used for VOC measurements.

% - percent

Cl₂ - chlorine

CO - carbon monoxide

H₂S - hydrogen sulfide

HCl - hydrogen chloride

HCN - hydrogen cyanide

LEL - lower explosive limit

mg/m³ - milligrams per cubic meter

O₂ - oxygen

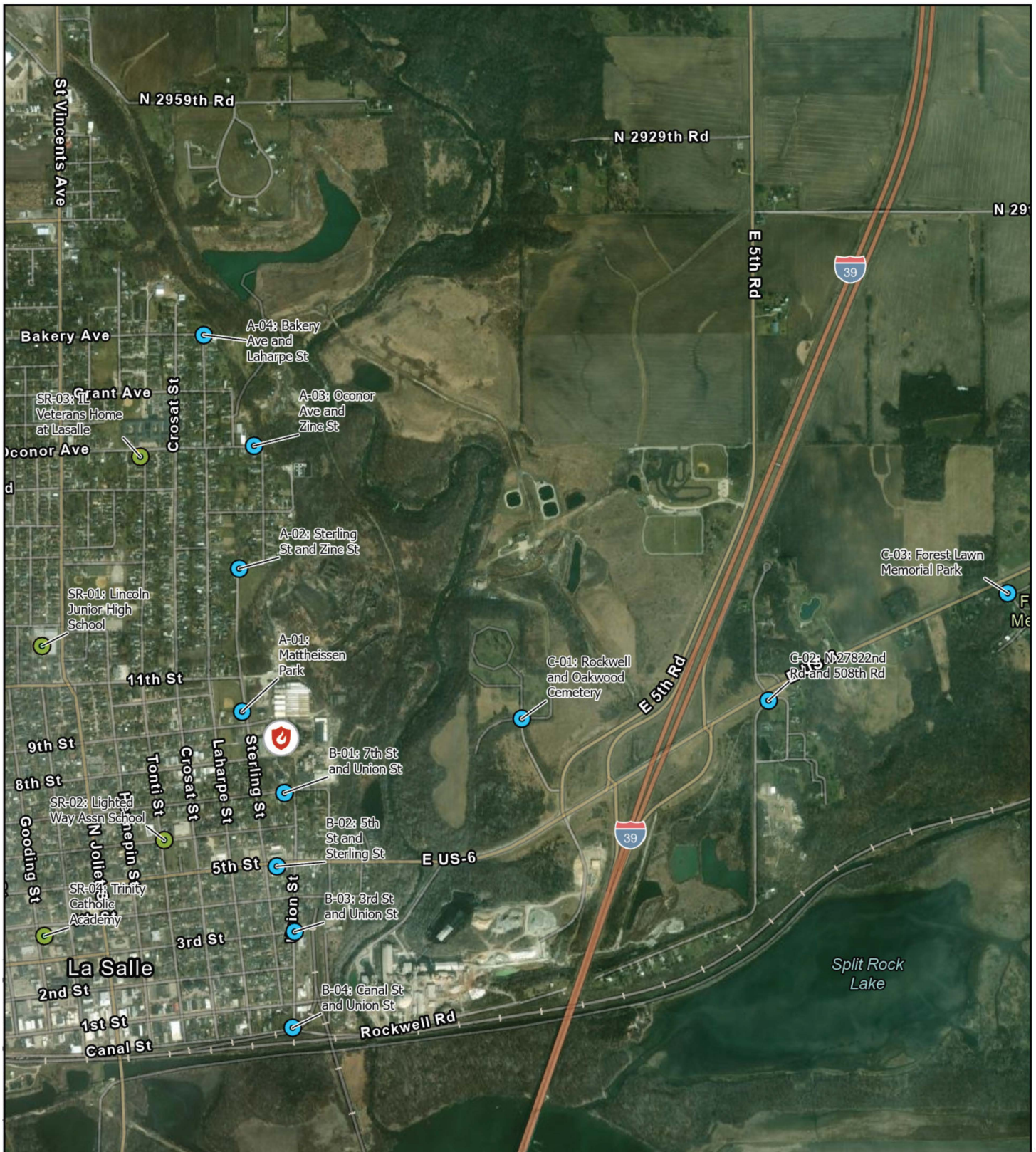
PM_{2.5} - particles that are 2.5 micrometers and smaller

PM₁₀ - particles that are 10 micrometers and smaller

ppm - parts per million

VOC - volatile organic compounds

The maximum result measured at each location during the monitoring period 01/11/2023 16:23 to 01/11/2023 19:40 is shown in the table.



Site Location



Legend

Roaming Air Monitoring Locations

Location Type

- Sensitive Receptor
- Transect
- Fire Location

N



0 1,000 2,000



Feet

LaSalle Chemical Fire
LaSalle, LaSalle County, Illinois

Figure 1
Roaming Air Monitoring Locations



Prepared For: EPA

Prepared By: Tetra Tech Inc.