

TCEQ Emergency Response Program

Region 16 Laredo



Mission Statement

- The TCEQ Emergency Response program upholds the mission statement through the regulation of discharges or spills within the State of Texas, including coastal waters.
- Texas Administrative Code (TAC)
Title 30, Chapter 327 - Spill Prevention & Control
- Our goal is clean air, clean water, and the safe management of waste.

Partnerships

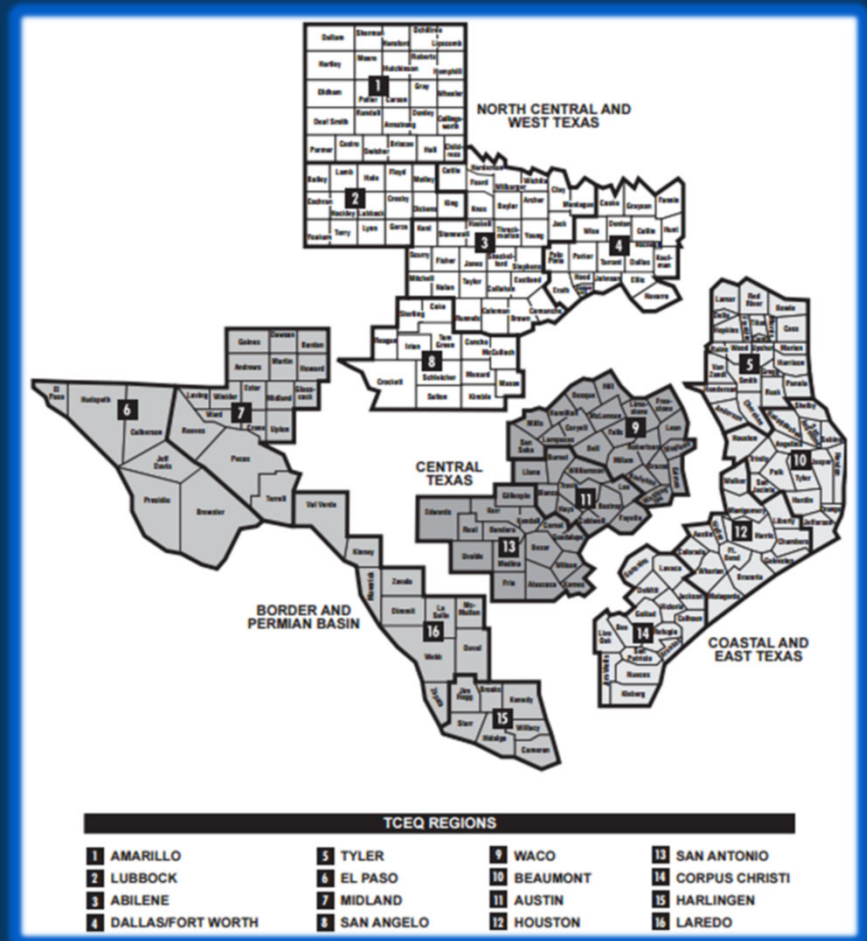
- Texas General Land Office (TGLO)
- United States Coast Guard (USCG)
- US Environmental Protection Agency (EPA)
- Railroad Commission of Texas (RRC)
- Texas Department of Public Safety (DPS)

Partnerships

- Texas Parks and Wildlife (TPWL)
- Texas Department of State Health Services (DSHS)
- Texas Division of Emergency Management (TDEM)
- Local Entities (uphold their own jurisdiction)

Purpose

- Present TCEQ and Emergency Response Program
- TCEQ Region 16 – Laredo
 - Counties: Dimmit, Duval, Kinney, La Salle, Maverick, McMullen, Val Verde, Webb, Zavala, Zapata
- Discuss requirements and scenarios related to spills and discharges
- Gain feedback
- Address further needs, concerns and questions



Applicability

- Discharge / Spill that results in a release to the environment, including air and coastal waters.
- Environment includes waters in the state, land surface or subsurface strata.

Definition

- Discharge / Spill
 - An act by which oil, hazardous substances, waste, or other substances are spilled, leaked, pumped, poured, emitted, entered, or dumped onto or into waters in the State of Texas OR where those substances are deposited and unless controlled or removed, may drain, seep, run, or otherwise enter water in the State of Texas.

Definition

- Water or water in the state
 - Groundwater, lakes, bays, ponds, impounding reservoirs, springs, rivers, streams, creeks, estuaries, wetlands, marshes, canals, Gulf of Mexico, inside territory of the state. Other bodies of surface water, natural/artificial, inland/coastal, fresh/salt, navigable/non-navigable, including beds/banks of watercourses and bodies of surface waters, that are wholly/partially inside/bordering the state or inside the jurisdiction of the state.

TCEQ Roles / Responsibilities

- Providing regulatory/technical oversight, monitoring, and technical assistance through its Emergency Response Team, during spills or discharges that result in releases to the environment that occur during natural or man-made disasters.

TCEQ Roles / Responsibilities

- Providing ER support to assist the local government when a responsible party (RP) is unwilling or unable to adequately respond.
- Ensuring that an appropriate response to the spill or discharge has been initiated.
- Assisting Local Governments during disasters.

TCEQ Oversight

- Actions Required from the RP:
 - Arrival of the RP or representative at the site of the discharge or spill.
 - Initiating efforts to stop the discharge or spill.
 - Remove the discharged/spilled substance
 - Remediation of impacted area
 - Manage the wastes
 - Minimizing impact to public health and environment.

Regulatory Requirements

- Notification requirements
 - When a spill or release occurs, the first responsibility for notification and response lies with the regulated entity and local emergency authority as required by the Texas Administrative Code (TAC):
 - 30 TAC §327.3
 - (b) Upon the determination that a reportable discharge or spill has occurred, the responsible person shall notify the TCEQ as soon as possible but not later than 24 hours after the discovery of the spill or discharge.
 - (g) Notification of local governmental authorities. If the discharge or spill creates an imminent health threat, the responsible person shall immediately notify and cooperate with local emergency authorities (fire department, fire marshal, law enforcement authority, health authority, or Local Emergency Planning Committee (LEPC), as appropriate)...

Regulatory Requirements

- Notification requirements (Cont.)
 - RP notifies the Agency about a Reportable Discharge of Spill within 24 hours
 - A reportable discharge or spill is a discharge or spill of oil, petroleum product, used oil, hazardous substance, industrial solid waste, into the environment in a quantity greater than the reportable quantity (RQ) in a 24-hour period
 - RQ's listed in 40 CFR §302.4
 - RP notifies the Agency by calling
 - 24-Hour State Emergency Response Center (1.800.832.8224)
 - Laredo Region Office during business hours (956.791.6611)

RQs

Hazardous Substance

- Land – 40 CFR 302.4
- Water – 40 CFR 302.4, when RQ greater than 100lbs the RQ is 100lbs

Crude Oil, Oil other than Used Oil & Petroleum Product

- Land – 210 gallons (5 barrels)
- Water – enough to create a sheen

Used Oil & Petroleum Product

- Land – 25 gallons
- Water – enough to create a sheen

Industrial Solid Waste

- Water – 100 lbs.

Waste Manifest

- Responsible party must submit a final cleanup report
- Waste manifests are requested to ensure waste was disposed of at the appropriate facility

NON-HAZARDOUS MANIFEST		1. Generator's US EPA ID No.		Manifest Doc No.		2. Page 1 of 1	
3. Generator's Mailing Address: HAZMAT INTERNATIONAL 2200 EAST DAVIS ST CONROE, TX 77301		Generator's Site Address (if different than mailing): HAZMAT INTERNATIONAL VARIOUS NON-INDUSTRIAL LOCATIONS CONROE, TX 77301		A. Manifest Number WMNA 7669691		B. State Generator's ID N/A	
4. Generator's Phone 936-756-2255		5. Transporter 1 Company Name DZ...		6. US EPA ID Number		C. State Transporter's ID	
7. Transporter 2 Company Name		8. US EPA ID Number		D. Transporter's Phone		E. State Transporter's ID	
9. Designated Facility Name and Site Address CONROE LANDFILL 2525 N LOOP 336 EAST CONROE, TX 77301		10. US EPA ID Number		F. Transporter's Phone		G. State Facility ID 39001	
				H. State Facility Phone 936-441-2722			
11. Description of Waste Materials		12. Containers		13. Total Quantity		14. Unit WT./VOL.	
a. DIESEL FUEL IMPACTED SOIL/ OR DEBRIS		No. Type		15. Min. Comments			
WM Profile # 967206TX		01 CM		Y		N/A	
b. WM Profile #							
c. WM Profile #							
d. WM Profile #							
1. Additional Descriptions for Materials Listed Above		K. Disposal Location					
200316...		Cell		Level			
15. Special Handling Instructions and Additional Information		Grid					
Purchase Order #		EMERGENCY CONTACT / PHONE NO.:					
16. GENERATOR'S CERTIFICATE: I hereby certify that the above-described materials are not hazardous wastes as defined by CFR Part 261 or any applicable state law, have been fully and accurately described, classified and packaged and are in proper condition for transportation according to applicable regulations.		Signature "On behalf of"		Month Day Year			
Printed Name		Signature		Month Day Year			
17. Transporter 1 Acknowledgement of Receipt of Materials		Signature		Month Day Year			
Printed Name		Signature		Month Day Year			
18. Transporter 2 Acknowledgement of Receipt of Materials		Signature		Month Day Year			
Printed Name		Signature		Month Day Year			
19. Certificate of Final Treatment/Disposal I certify, on behalf of the above listed treatment facility, that to the best of my knowledge, the above-described waste was managed in compliance with all applicable laws, regulations, permits and licenses on the dates listed above.		Signature		Month Day Year			
20. Facility Owner or Operator: Certification of receipt of non hazardous materials covered by this manifest.		Signature		Month Day Year			
White- ORIGINAL		Blue- DISPOSER RETAIN (AUDIT)		Gold- GENERATOR RETAIN		Yellow- DISPOSER RETAIN	
Pink- TRANSPORTER RETAIN							



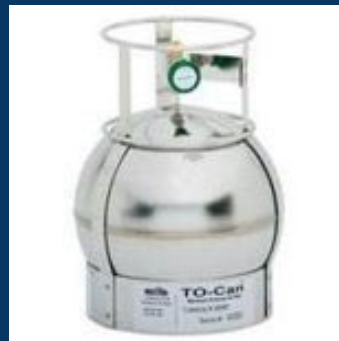
TCEQ is not a First Responder.

- It is important to note that TCEQ does not act as a first responder but provides support and assistance to local governments upon request or as needed.

TCEQ Roles / Responsibilities

- TCEQ provides support to the local governments during an emergency response and conducts regulatory oversight for activities within its jurisdiction.
- TCEQ support may include conducting air monitoring.
- Air Program monitoring equipment includes
 - RAE system monitors
 - Passivated stainless steel canisters
 - Continuous ambient monitoring stations (CAMS)
 - Brownsville, Harlingen, Mission, South Padre Island
 - Monitor for fine particulate matter, ozone, carbon dioxide, temperature, precipitation, wind parameters, etc.

Air Monitoring Equipment



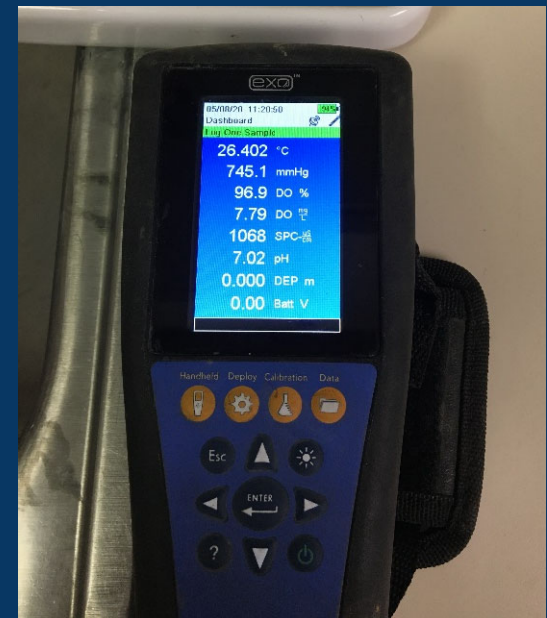






Water Monitoring Equipment

- Water Program monitoring equipment includes
 - Colorimeters
 - Flow meters
 - Pressure gauges/recorders
 - Water quality monitors



Waste Monitoring Equipment

- Waste Program monitoring/sampling equipment includes
 - LandTec GEM5000
 - Soil Auger



TCEQ Roles / Responsibilities

- Acting as the Environmental State On-Scene Coordinator (SOSC) during an event where the Incident Command System (ICS) is initiated.
 - As SOSC we are officially designated by the executive director to coordinate and direct agency responses or to oversee private responses to discharges or spills.

NIMS/ICS

- During hurricane and other responses, we are usually working with many agencies such as US EPA, US Coast Guard, GLO, TPWD, TDEM and RRC
- Unified Command
- NIMS/ICS Training (100, 200, 300, 400, 700 & 800)

Critical Infrastructure Division

- Assure compliance with environmental regulations to protect public health and the environment, and provide support to regulated critical infrastructure during disasters.
- Seven Programs within CID
 - Dam Safety
 - Homeland Security
 - Emergency Management Support
 - BioWatch
 - Radioactive Materials Compliance
 - Tier II Chemical Reporting
 - Emission Events Review



Homeland Security Program

- TCEQ's Homeland Security Program (HSP)
 - Assists in the planning, development, coordination, and implementation of initiatives to promote the governor's homeland-security strategy, and to detect, deter, respond to, and recover from disasters, whether caused by nature or people.
 - Respond to and assist in recovery from disasters and emergencies, whether natural or man-made
 - Communicate and coordinate efforts with those responsible for state's critical infrastructure.

Homeland Security Program

- State's critical infrastructure includes
 - Producers and purchasers of public drinking water
 - High-risk dams
 - Refineries
 - Petrochemical facilities
 - Wastewater treatment facilities
 - Low-level radioactive waste disposal facilities

Mobile Command Post



Small Command Trailer with GIS Capability

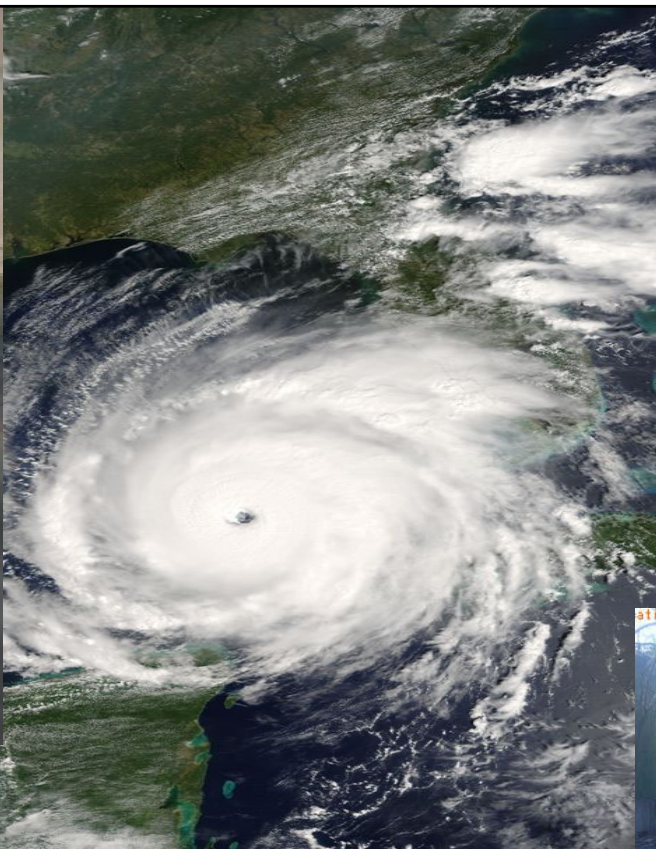


Communications



18' Bay Stealth with 115 HP Yamaha

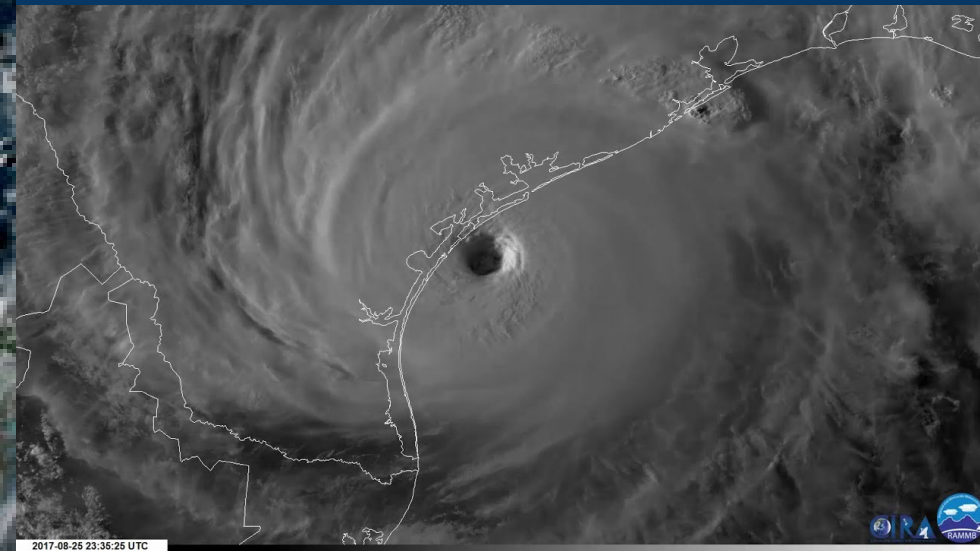
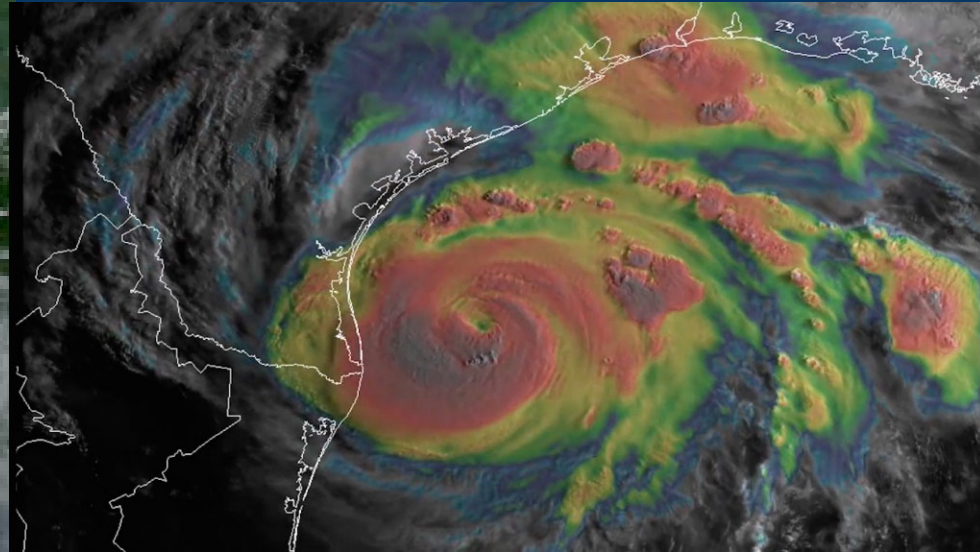




TCEQ Deployments



Hurricane Harvey



Hurricane Response

- Assessment of industrial facilities
- Assessment of Public Water Systems (PWS)
- Assessment of Wastewater Treatment Plants
- Orphan container assessment and removal
- Hazmat/Spill response
 - Assisting local governments
- Approving Temporary Debris Management Sites

Assessment of Industrial, PWS and Wastewater Facilities

- Hurricane response is not compliance oriented.
- Is the facility operational?
- If not, what do they need to get back online?

Orphan Container Removal

- Survey for HazMat Orphan Containers
 - Volatile Organic Compounds (VOCs)
 - Ionizing Radiation
- Recovery of Orphan Containers
 - Use of State Contractors if Needed
 - TCEQ is the State Lead for Emergency Support Function (ESF) #10 — Hazardous Materials and Oil Spill Response.

Debris Management

- Providing guidance on options for managing and disposing of debris from disaster.
- Large volumes of storm debris may be generated following natural disasters such as hurricanes, floods and tornadoes.

Debris Management Oversight

- Ensure that debris management sites are operated in a manner not to create a human health threat or threat to the environment
 - Location of debris management sites
 - Vegetative debris
 - Construction and demolition debris
 - Ensure proper separation of Household Hazardous Waste (HHW) and white goods (i.e. refrigerators, washers & dryers) from storm debris prior to disposal
 - Freon removal
 - Ensure proper disposal of HHW and white goods



**Household Hazardous Waste
Drop-off**







Assistance

- **Small Business & Local Government Assistance**
 - 1-800-447-2827
- **Central Office Main Switchboard**
 - (512) 239-1000
- **Regional Office**
 - Laredo (956) 791-6611

Assistance

- Hearing impaired 1.800.RELAY.TX
- Customer service survey can be completed online:
<https://www.tceq.texas.gov/customersurvey/>
- Visit our website: www.tceq.texas.gov

Jose Salinas

Emergency Response Coordinator

TCEQ Region 16 – Laredo

(956) 791-6111

Jose.Salinas@tceq.texas.gov

ER Primary

(956) 763-7130

ER Secondary

(956) 792-6321