

Table 2
Community Continuous Air Monitoring Results
My Way Trading Warehouse Fire
Richmond, Wayne County, Indiana
Monitoring Period: 04/16/2023 05:23 to 04/17/2023 21:22

Location	Station ID	Monitoring Period	Analyte	24-hour Period Concentration Range	Average of All 24-hour Periods
NW F St & NW 2nd St	DTX03	04/16/2023 19:13 - 04/17/2023 21:22	PM _{2.5} (mg/m ³)	0.006 to 0.009	0.007
			PM ₁₀ (mg/m ³)	0.006 to 0.009	0.007
Hunt St	DTX02	04/16/2023 15:35 - 04/17/2023 17:35	PM _{2.5} (mg/m ³)	0.001 to 0.002	0.001
			PM ₁₀ (mg/m ³)	0.001 to 0.002	0.001
Indiana Ave & NW 5th St	DTX01	04/16/2023 05:23 - 04/16/2023 12:05	PM _{2.5} (mg/m ³)	0.002 to 0.021	0.009
			PM ₁₀ (mg/m ³)	0.002 to 0.021	0.010
Fire/EMS Tent at fire site	DTX09	04/16/2023 19:13 - 04/17/2023 21:22	PM _{2.5} (mg/m ³)	0.006 to 0.009	0.007
			PM ₁₀ (mg/m ³)	0.006 to 0.009	0.007
New Paris, Ohio	DTX06	04/16/2023 06:43 - 04/17/2023 20:52	PM _{2.5} (mg/m ³)	0.022 to 0.029	0.024
			PM ₁₀ (mg/m ³)	0.023 to 0.030	0.025

Notes:

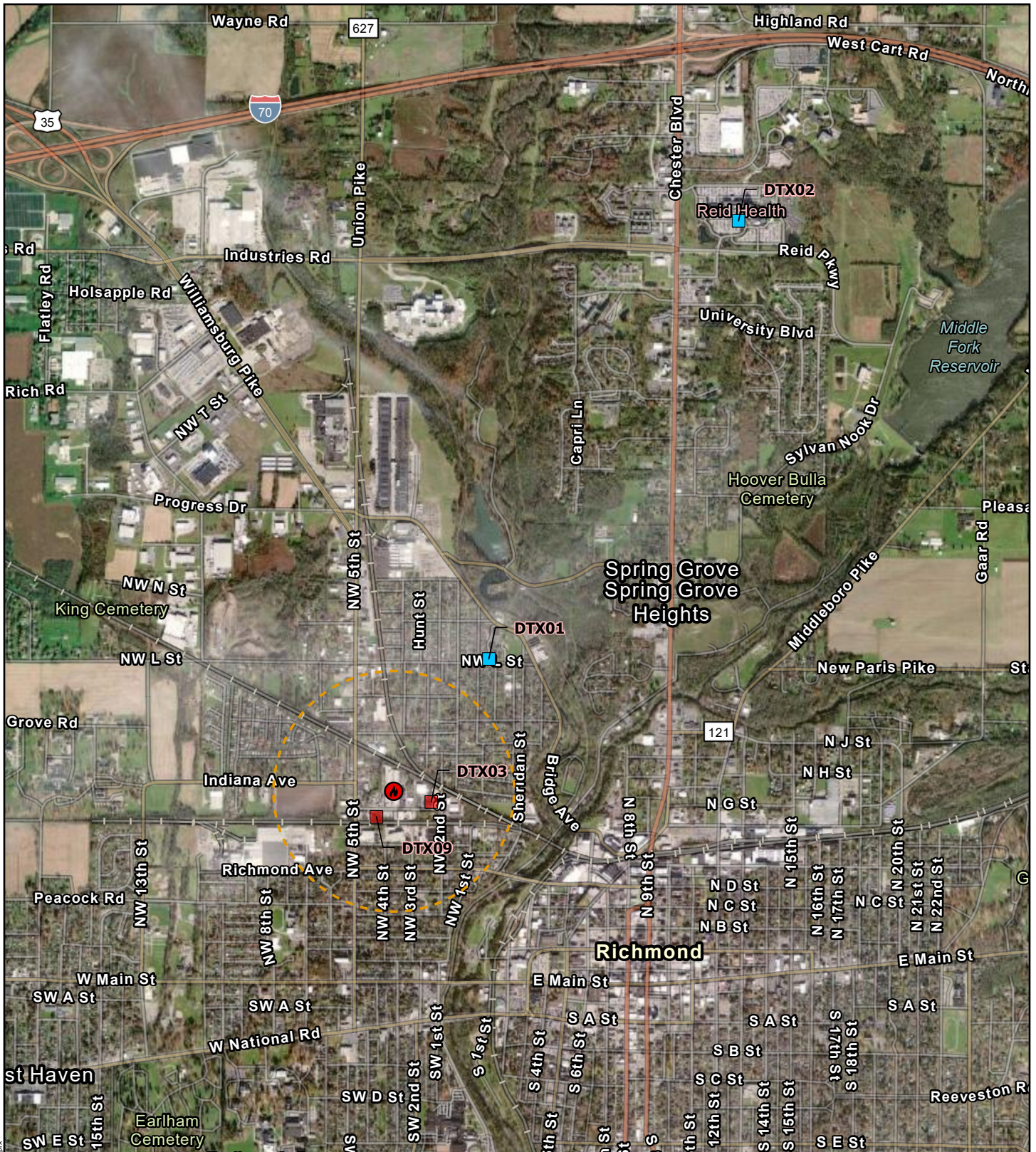
Air monitoring measurements have been averaged over a 24-hour time period and summarized above.

Abbreviations:

mg/m³ - milligrams per meter cubed

PM_{2.5} - Particulate Matter, diameter 2.5 micrometers and smaller

PM₁₀ - Particulate Matter, diameter 10 micrometers and smaller



Site Location



Legend

DustTrak Locations

Evacuation Zone

Community

Fire Location

Approximate Half-Mile Evacuation Zone



0 0.25 0.5



Miles

My Way Trading Warehouse Fire
Richmond, Wayne County,
Indiana

DustTrak Location Map



TETRA TECH

Prepared For: EPA

Prepared By: Tetra Tech Inc.