



# EPA and EPA Contractors

## Pushing Data from Honeywell's Safety Suite Responder to Viper Survey Controller

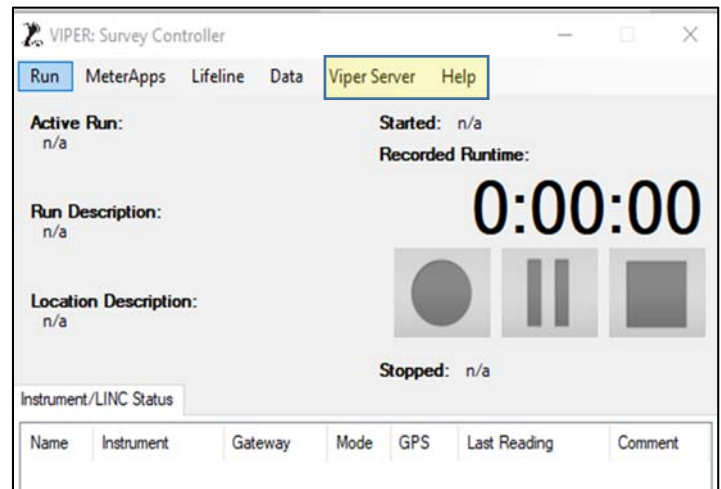
**Overview:** *These instructions are for EPA and EPA Contractors. The process is different for EPA External partners such as States, Local Hazmat, RPs, etc.*

**When RAE instruments are communicating in Safety Suite Responder**, the steps below will configure Safety Suite Responder to push the data to EPA's Viper Survey Controller software. Survey Controller needs to be installed and running on the same laptop as Safety Suite Responder. The laptop will also need an internet connection for data to flow from Survey Controller to Viper Deployment Manager.

### 1. Open Survey Controller on the laptop.

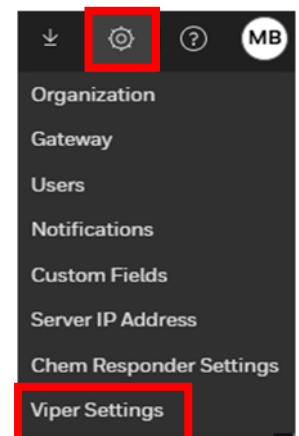
- Survey Controller version 1.6.0 or higher is required for pushing from Safety Suite to Survey Controller. You can check the Survey Controller version under the "Help" menu in Survey Controller.
- Remember to register Survey Controller to the deployment. You can register Survey Controller using the "Viper Server" menu in Survey Controller.

Additional information on Survey Controller can be found in the Viper User Guide posted to the Viper website.



### 2. Configure Safety Suite to push to Survey Controller

- Click the **Gear Icon** in the upper right corner of the Safety Suite Dashboard
- Select the **"Viper Settings"** option at the bottom of the menu.





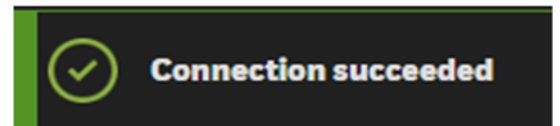
3. Slide the “**Viper Settings**” icon to the right to activate the feature

a. Select the “**On Premise**” option

IP Address and Port are automatically populated

4. Click “**Save**”

The “Viper Settings” window will close and you should see the words “**Connection Succeeded**” in the upper right corner of the Safety Suite dashboard.



If you receive a “Connection Failed” message, most likely Survey Controller is not open (Step 1) or the wrong version of Survey Controller is installed.

5. Create your run in Survey Controller. Remember to switch to the “**Generic CAP Stream**” option and Select all of your Safety Suite Instruments.

Additional information on Survey Controller can be found here:

<https://response.epa.gov/sites/5033/files/VIPER%20User%20Guide-Summer%202020.pdf>

Additional information on Safety Suite to Viper can be found on the Viper website:

<https://response.epa.gov/viper>. See the “Videos” section of the website to access Safety Suite to Viper Videos.