

Air Monitoring Summary Tables

The tables below summarize monitoring data collected using EPA's Viper wireless remote monitoring system. The "Number of Readings" are artificially reduced to manage large quantities of data for this report. Further discussion is provided in the notes section on page 5.



Project Name: Applegate Lane Containers

**From: 10/22/23
7:01 AM**

**To: 10/23/23
7:00 AM**

Station 01 - Tier I							
Instrument	Analyte	Action Level Exceedance?	Number of Readings	Number of Detections	Concentration Range	Period Average	Action Level
AreaRAE 1	VOC	No	2369	0	0-0 ppb	0.00 ppb	9000 ppb
	CO	No	2369	0	0-0 ppm	0.00 ppm	83 ppm
	H2S	No	2369	0	0-0 ppm	0.00 ppm	0.51 ppm
	O2	No	2369	2369	20.9-20.9 %	20.90 %	<19.5 or >23 %
	LEL	No	2369	0	0-0 %	0.00 %	10 %
	HCN	No	2369	0	0-0 ppm	0.00 ppm	2 ppm
DustTrak 1	PM2.5	See PM-2.5 Action Levels	1439	1346	0-116 µg/m3	6.53 µg/m3	See PM-2.5 Action Levels
SPM Flex 1	Ammonia (NH3)	No	1439	0	0-0 ppm	0.00 ppm	30 ppm
SPM Flex 2	Nitric Acid (HNO3)	No	1439	0	0-0 ppm	0.00 ppm	0.16 ppm

Station 02 - Tier I							
Instrument	Analyte	Action Level Exceedance?	Number of Readings	Number of Detections	Concentration Range	Period Average	Action Level
AreaRAE 2	VOC	No	2364	1784	0-467 ppb	253.86 ppb	9000 ppb
	CO	No	2364	0	0-0 ppm	0.00 ppm	83 ppm
	H2S	No	2364	0	0-0 ppm	0.00 ppm	0.51 ppm
	O2	No	2364	2364	20.9-20.9 %	20.90 %	<19.5 or >23 %
	LEL	No	2364	0	0-0 %	0.00 %	10 %
	HCN	No	2364	310	0-0.4 ppm	0.02 ppm	2 ppm
DustTrak 2	PM2.5	See PM-2.5 Action Levels	1443	1443	5-74 µg/m3	12.18 µg/m3	See PM-2.5 Action Levels
SPM Flex 3	Ammonia (NH3)	No	1439	0	0-0 ppm	0.00 ppm	30 ppm
SPM Flex 4	Nitric Acid (HNO3)	No	1439	0	0-0 ppm	0.00 ppm	0.16 ppm

Station 03 - Tier I							
Instrument	Analyte	Action Level Exceedance?	Number of Readings	Number of Detections	Concentration Range	Period Average	Action Level
AreaRAE 3	VOC	No	2368	1084	0-152 ppb	29.43 ppb	9000 ppb
	CO	No	2368	0	0-0 ppm	0.00 ppm	83 ppm
	H2S	No	2368	0	0-0 ppm	0.00 ppm	0.51 ppm
	O2	No	2368	2368	20.5-21.7 %	20.91 %	<19.5 or >23 %
	LEL	No	2368	0	0-0 %	0.00 %	10 %
	HCN	No	2368	138	0-0.4 ppm	0.01 ppm	2 ppm
DustTrak 3	PM2.5	See PM-2.5 Action Levels	1439	1439	2-83 µg/m3	8.16 µg/m3	See PM-2.5 Action Levels
SPM Flex 5	Ammonia (NH3)	No	1439	11	0-0.02 ppm	0.00 ppm	30 ppm
SPM Flex 6	Nitric Acid (HNO3)	No	1439	0	0-0 ppm	0.00 ppm	0.16 ppm

Air Monitoring Summary Tables

The tables below summarize monitoring data collected using EPA's Viper wireless remote monitoring system. The "Number of Readings" are artificially reduced to manage large quantities of data for this report. Further discussion is provided in the notes section on page 5.



Project Name: Applegate Lane Containers

**From: 10/22/23
7:01 AM**

**To: 10/23/23
7:00 AM**

Station 04 - Tier I							
Instrument	Analyte	Action Level Exceedance?	Number of Readings	Number of Detections	Concentration Range	Period Average	Action Level
AreaRae 4	VOC	No	2355	0	0-0 ppb	0.00 ppb	9000 ppb
	CO	No	2355	3	0-4 ppm	0.00 ppm	83 ppm
	H2S	No	2355	0	0-0 ppm	0.00 ppm	0.51 ppm
	O2	No	2355	2355	20.2-20.9 %	20.43 %	<19.5 or >23 %
	LEL	No	2355	0	0-0 %	0.00 %	10 %
	HCN	No	2355	14	0-0.1 ppm	0.00 ppm	2 ppm
DustTrak 4	PM2.5	See PM-2.5 Action Levels	1440	1440	4-40 µg/m3	9.31 µg/m3	See PM-2.5 Action Levels
SPM Flex 7	Ammonia (NH3)	No	1440	2	0-0.01 ppm	0.00 ppm	30 ppm
SPM Flex 8	Nitric Acid (HNO3)	No	1440	0	0-0 ppm	0.00 ppm	0.16 ppm

Station 05 - Tier I							
Instrument	Analyte	Action Level Exceedance?	Number of Readings	Number of Detections	Concentration Range	Period Average	Action Level
AreaRae 5	VOC	No	2369	2045	0-575 ppb	338.48 ppb	9000 ppb
	CO	No	2369	0	0-0 ppm	0.00 ppm	83 ppm
	H2S	No	2369	0	0-0 ppm	0.00 ppm	0.51 ppm
	O2	No	2369	2369	20.9-20.9 %	20.90 %	<19.5 or >23 %
	LEL	No	2369	0	0-0 %	0.00 %	10 %
	HCN	No	2369	91	0-0.2 ppm	0.00 ppm	2 ppm
DustTrak 5	PM2.5	See PM-2.5 Action Levels	1439	1439	4-77 µg/m3	12.63 µg/m3	See PM-2.5 Action Levels
SPM Flex 9	Ammonia (NH3)	No	1439	191	0-0.49 ppm	0.01 ppm	30 ppm
SPM Flex 10	Nitric Acid (HNO3)	No	1439	0	0-0 ppm	0.00 ppm	0.16 ppm

Station 06 - Tier I							
Instrument	Analyte	Action Level Exceedance?	Number of Readings	Number of Detections	Concentration Range	Period Average	Action Level
AreaRae 6	VOC	No	2342	2116	0-360 ppb	239.50 ppb	9000 ppb
	CO	No	2342	0	0-0 ppm	0.00 ppm	83 ppm
	H2S	No	2342	0	0-0 ppm	0.00 ppm	0.51 ppm
	O2	No	2342	2342	20.1-20.7 %	20.24 %	<19.5 or >23 %
	LEL	No	2342	0	0-0 %	0.00 %	10 %
	HCN	No	2342	199	0-0.8 ppm	0.03 ppm	2 ppm
DustTrak 6	PM2.5	See PM-2.5 Action Levels	1440	1440	3-44 µg/m3	10.13 µg/m3	See PM-2.5 Action Levels
SPM Flex 11	Ammonia (NH3)	No	1439	121	0-0.25 ppm	0.00 ppm	30 ppm
SPM Flex 12	Nitric Acid (HNO3)	No	1439	0	0-0 ppm	0.00 ppm	0.16 ppm

Air Monitoring Summary Tables

The tables below summarize monitoring data collected using EPA's Viper wireless remote monitoring system. The "Number of Readings" are artificially reduced to manage large quantities of data for this report. Further discussion is provided in the notes section on page 5.



Project Name: Applegate Lane Containers

From: 10/22/23
7:01 AM

**To: 10/23/23
7:00 AM**

Station 07 - Tier I							
Instrument	Analyte	Action Level Exceedance?	Number of Readings	Number of Detections	Concentration Range	Period Average	Action Level
AreaRae 7	VOC	No	2368	2368	218-1072 ppb	785.21 ppb	9000 ppb
	CO	No	2368	5	0-20 ppm	0.02 ppm	83 ppm
	H2S	No	2368	0	0-0 ppm	0.00 ppm	0.51 ppm
	O2	No	2368	2368	19.9-20.6 %	20.10 %	<19.5 or >23 %
	LEL	No	2368	0	0-0 %	0.00 %	10 %
	HCN	No	2368	30	0-0.5 ppm	0.00 ppm	2 ppm
DustTrak 7	PM2.5	See PM-2.5 Action Levels	1439	1439	2-115 µg/m3	10.10 µg/m3	See PM-2.5 Action Levels
SPM Flex 13	Ammonia (NH3)	No	1440	154	0-0.24 ppm	0.00 ppm	30 ppm
SPM Flex 14	Nitric Acid (HNO3)	No	1440	0	0-0 ppm	0.00 ppm	0.16 ppm

Station 08 - Crush Box (On Site)							
Instrument	Analyte	Action Level Exceedance?	Number of Readings	Number of Detections	Concentration Range	Period Average	Action Level
AreaRae 8	VOC	No	2364	1830	0-361 ppb	74.01 ppb	9000 ppb
	CO	No	2364	0	0-0 ppm	0.00 ppm	83 ppm
	H2S	No	2364	0	0-0 ppm	0.00 ppm	0.51 ppm
	O2	No	2364	2364	20.5-20.9 %	20.62 %	<19.5 or >23 %
	LEL	No	2364	0	0-0 %	0.00 %	10 %
	HCN	No	2364	6	0-0.1 ppm	0.00 ppm	2 ppm

Station 10 - Tier II							
Instrument	Analyte	Action Level Exceedance?	Number of Readings	Number of Detections	Concentration Range	Period Average	Action Level
AreaRae 10	VOC	No	2368	0	0-0 ppb	0.00 ppb	9000 ppb
	CO	No	2368	0	0-0 ppm	0.00 ppm	83 ppm
	H2S	No	2368	0	0-0 ppm	0.00 ppm	0.51 ppm
	O2	No	2368	2368	20.9-20.9 %	20.90 %	<19.5 or >23 %
	LEL	No	2368	0	0-0 %	0.00 %	10 %
	HCN	No	2368	2	0-0.7 ppm	0.00 ppm	2 ppm
DustTrak 10	PM2.5	See PM-2.5 Action Levels	1439	1437	0-143 µg/m3	7.71 µg/m3	See PM-2.5 Action Levels
SPM Flex 19	Ammonia (NH3)	No	1439	162	0-0.24 ppm	0.00 ppm	30 ppm
SPM Flex 20	Nitric Acid (HNO3)	No	1439	0	0-0 ppm	0.00 ppm	0.16 ppm

Air Monitoring Summary Tables

The tables below summarize monitoring data collected using EPA's Viper wireless remote monitoring system. The "Number of Readings" are artificially reduced to manage large quantities of data for this report. Further discussion is provided in the notes section on page 5.



Project Name: Applegate Lane Containers

**From: 10/22/23
7:01 AM**

**To: 10/23/23
7:00 AM**

Station 11 - Tier II							
Instrument	Analyte	Action Level Exceedance?	Number of Readings	Number of Detections	Concentration Range	Period Average	Action Level
AreaRae 11	VOC	No	2369	2369	87-850 ppb	574.01 ppb	9000 ppb
	CO	No	2369	0	0-0 ppm	0.00 ppm	83 ppm
	H2S	No	2369	0	0-0 ppm	0.00 ppm	0.51 ppm
	O2	No	2369	2369	20.9-20.9 %	20.90 %	<19.5 or >23 %
	LEL	No	2369	0	0-0 %	0.00 %	10 %
	HCN	No	2369	0	0-0 ppm	0.00 ppm	2 ppm
DustTrak 11	PM2.5	See PM-2.5 Action Levels	1437	1384	0-57 µg/m3	8.58 µg/m3	See PM-2.5 Action Levels
SPM Flex 21	Ammonia (NH3)	No	1439	0	0-0 ppm	0.00 ppm	30 ppm
SPM Flex 22	Nitric Acid (HNO3)	No	1439	0	0-0 ppm	0.00 ppm	0.16 ppm

Station 12 - Tier II							
Instrument	Analyte	Action Level Exceedance?	Number of Readings	Number of Detections	Concentration Range	Period Average	Action Level
AreaRae 12	VOC	No	2351	2194	0-629 ppb	399.73 ppb	9000 ppb
	CO	No	2351	2	0-5 ppm	0.00 ppm	83 ppm
	H2S	No	2351	0	0-0 ppm	0.00 ppm	0.51 ppm
	O2	No	2351	2351	20.3-20.9 %	20.65 %	<19.5 or >23 %
	LEL	No	2351	0	0-0 %	0.00 %	10 %
	HCN	No	2351	99	0-0.4 ppm	0.01 ppm	2 ppm
DustTrak 12	PM2.5	See PM-2.5 Action Levels	1441	1441	9-44 µg/m3	13.43 µg/m3	See PM-2.5 Action Levels
SPM Flex 23	Ammonia (NH3)	No	1439	31	0-0.02 ppm	0.00 ppm	30 ppm
SPM Flex 24	Nitric Acid (HNO3)	No	1439	0	0-0 ppm	0.00 ppm	0.16 ppm

Air Monitoring Summary Tables

The tables below summarize monitoring data collected using EPA's Viper wireless remote monitoring system. The "Number of Readings" are artificially reduced to manage large quantities of data for this report. Further discussion is provided in the notes section on page 5.



Project Name: Applegate Lane Containers

**From: 10/22/23
7:01 AM**

**To: 10/23/23
7:00 AM**

Station 13 - Tier II							
Instrument	Analyte	Action Level Exceedance?	Number of Readings	Number of Detections	Concentration Range	Period Average	Action Level
AreaRae 13	VOC	No	2367	2124	0-620 ppb	449.64 ppb	9000 ppb
	CO	No	2367	0	0-0 ppm	0.00 ppm	83 ppm
	H2S	No	2367	0	0-0 ppm	0.00 ppm	0.51 ppm
	O2	No	2367	2367	20.2-20.7 %	20.29 %	<19.5 or >23 %
	LEL	No	2367	0	0-0 %	0.00 %	10 %
	HCN	No	2367	184	0-0.4 ppm	0.01 ppm	2 ppm
DustTrak 13	PM2.5	See PM-2.5 Action Levels	1440	1440	1-46 µg/m3	8.28 µg/m3	See PM-2.5 Action Levels
SPM Flex 25	Ammonia (NH3)	No	1439	0	0-0 ppm	0.00 ppm	30 ppm
SPM Flex 26	Nitric Acid (HNO3)	No	1439	0	0-0 ppm	0.00 ppm	0.16 ppm

Station 14 - Tier II							
Instrument	Analyte	Action Level Exceedance?	Number of Readings	Number of Detections	Concentration Range	Period Average	Action Level
AreaRae 14	VOC	No	2369	0	0-0 ppb	0.00 ppb	9000 ppb
	CO	No	2369	4	0-7 ppm	0.01 ppm	83 ppm
	H2S	No	2369	0	0-0 ppm	0.00 ppm	0.51 ppm
	O2	No	2369	2369	20.9-21.4 %	20.93 %	<19.5 or >23 %
	LEL	No	2369	0	0-0 %	0.00 %	10 %
	HCN	No	2369	0	0-0 ppm	0.00 ppm	2 ppm
DustTrak 14	PM2.5	See PM-2.5 Action Levels	1440	1416	0-62 µg/m3	11.15 µg/m3	See PM-2.5 Action Levels
SPM Flex 27	Ammonia (NH3)	No	1439	29	0-0.22 ppm	0.00 ppm	30 ppm
SPM Flex 28	Nitric Acid (HNO3)	No	1439	0	0-0 ppm	0.00 ppm	0.16 ppm

Air Monitoring Summary Tables

The tables below summarize monitoring data collected using EPA's Viper wireless remote monitoring system. The "Number of Readings" are artificially reduced to manage large quantities of data for this report. Further discussion is provided in the notes section on page 5.



Project Name: Applegate Lane Containers

From: 10/22/23
7:01 AM

To: 10/23/23
7:00 AM

Notes:

Air monitoring instruments around the site are continuously operating 24-hours per day and transmitting to a central location. When elevated readings are detected, response personnel at the Site are automatically notified so that confirmation and appropriate actions can take place. Each day, these instruments collect 44 million records and 5GB of data. To generate this summary report, the number of records have been artificially reduced by using one reading per minute from each instrument - this does not affect the period average has no significant effect on the concentration range. No data is lost and elevated concentrations of any analyte being measured at the Site would be sufficiently represented within the data shown here.

Ammonia Detections: Multiple instruments show low levels of Ammonia detections below 1.0 ppm. This is below the action level of 30 ppm based on the most protective Acute Exposure Guideline Levels for a 1-hour average exposure. EPA has provided this data to the Agency of Toxic Substances and Disease Registry (ASTDR) for review and an assessment of these data have been provided in the Air Monitoring Data Summary Report for Oct 17 at 0700 to Oct 18 at 0700.

Analyte	Definition	Action Level Reference
VOC	Volatile Organic Compounds	AEGL-1 8hr for Benzene
CO	Carbon Monoxide	AEGL-2 1hr
H2S	Hydrogen Sulfide	AEGL-1 1hr
O2	Oxygen	29 CFR 1910.146, Confined Spaces
LEL	Lower Explosive Limit	29 CFR 1910.146, Confined Spaces
NH3	Ammonia	AEGL-1 1hr
HNO3	Nitric Acid	AEGL-1, 1hr
SO2	Sulfur Dioxide	AEGL-1 1hr
Cl2	Chlorine	AEGL-1 1hr
HCN	Hydrogen Cyanide	AEGL-1 1hr
NO	Nitric Oxide	PAC-1 (compare Cl2 and H2S PAC-1 to AEGL-1)
PM 2.5	Particulate Matter 2.5	See PM-2.5 Action Levels Sheet

%	Percent
<	Less than
>	Greater than
AEGL	Acute Exposure Guideline Levels for Airborne Chemicals
C/m	Counts (ionization events) per minute
mg/m3	milligrams per cubic meter
min	Minute
PAC	Protective Action Criteria
PEL	Permissible exposure limit
ppb	Parts per billion
ppm	Parts per million
PM	Particulate Matter
SOG	Standard Operating Guidelines
SPM	Single Point Monitor
TEEL	Temporary Emergency Exposure Limit
TLV	Threshold Limit Value
µg/m3	Micrograms per cubic meter
µrem/h	Microrem per hour



Legend



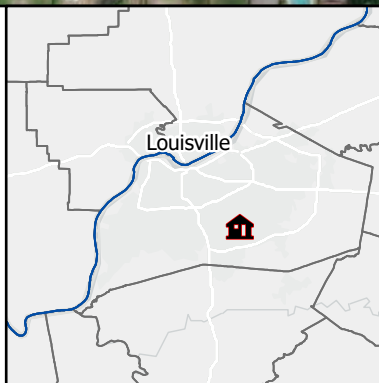
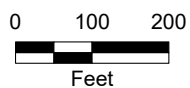
6213 Applegate Lane



Tier I



Tier II



United States
Environmental Protection Agency
Region 4

Applegate Lane Container Site Air Monitoring Station Locations

City:
Louisville

County:
Jefferson

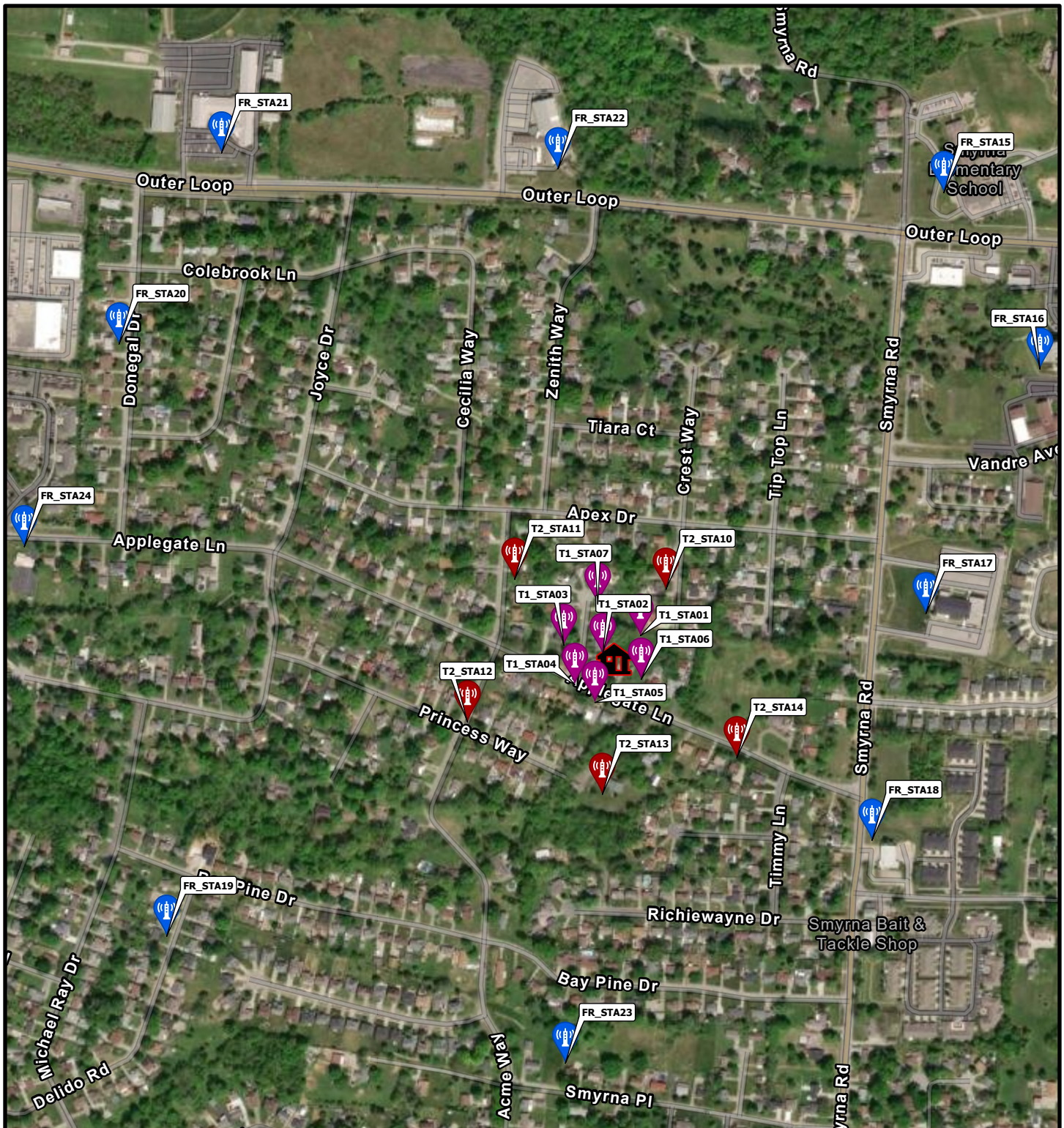
State:
Kentucky



TETRA TECH

Date:
10/10/2023

Analyst:
MORGAN.TORRES



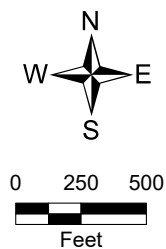
Legend

 6213 Applegate Lane

 Tier I

 Tier II

 Contingency



United States
Environmental Protection Agency
Region 4

Applegate Lane Container Site Air Monitoring Station Locations

City:
Louisville

County:
Jefferson

State:
Kentucky



TETRA TECH

Date:
10/10/2023

Analyst:
MORGAN.TORRES

PM2.5 (Particulate Matter ≤ 2.5 microns) Community Action Threshold Levels				
For Unified Command Use				
1-Hour Average (µg/m3)	24-Hour Average (µg/m3)	Level of Health Concern	Meaning	Action
0.0 - 40.0	0.0-12.0	Good	Air Quality is considered satisfactory, and air pollution poses little or no risk.	Implement communication plan.
40.1 - 80.0	12.1 - 35.4	Moderate	Air quality is acceptable; however, for some pollutants there may be a moderate health concern for a very small number of people who are unusually sensitive to air pollution.	Issue public announcement about health effects. Stay out of areas with visible smoke.
80.1 - 175.0	35.5 - 55.4	Unhealthy for Sensitive Groups	Members of sensitive groups may experience health effects. The general public is not likely to be affected.	Recommend evacuation or shelter-in-place for sensitive populations.
175.1 - 300.0	55.5 - 150.4	Unhealthy	Everyone may begin to experience health effects; members of sensitive groups may experience more serious health effects.	Consider closing schools and cancelling outdoor events. Recommend shelter-in-place for affected neighborhoods.
300.1 - 500.0	150.5 - 250.4	Very Unhealthy	Health warnings of emergency conditions. The entire population is more likely to be affected.	Consider closing schools and cancel all outdoor events. Recommend shelter-in-place and/or evacuation for affected neighborhoods.
> 500.0	> 250.5	Hazardous	Health alert: everyone may experience more serious health effects.	Recommend closing schools & cancel outdoor events. Recommend closing workplaces and evacuating affected neighborhoods.

See The National Ambient Air Quality Standards for Particle Pollution REVISED AIR QUALITY STANDARDS FOR PARTICLE POLLUTION AND UPDATES TO THE AIR QUALITY INDEX (AQI) (https://www.epa.gov/sites/default/files/2016-04/documents/2012_aqi_factsheet.pdf)