

Air Monitoring Summary Tables

The tables below summarize monitoring data collected using EPA's Viper wireless remote monitoring system. The "Number of Readings" are artificially reduced to manage large quantities of data for this report. Further discussion is provided in the notes section on page 5.



Project Name: Applegate Lane Containers

**From: 10/25/23
7:01 AM**

**To: 10/26/23
6:59 AM**

Station 01 - Tier I							
Instrument	Analyte	Action Level Exceedance?	Number of Readings	Number of Detections	Concentration Range	Period Average	Action Level
AreaRAE 1	VOC	No	1439	0	0-0 ppb	0.00 ppb	9000 ppb
	CO	No	1439	8	0-8 ppm	0.02 ppm	83 ppm
	H2S	No	1439	0	0-0 ppm	0.00 ppm	0.51 ppm
	O2	No	1439	1439	20.9-20.9 %	20.90 %	<19.5 or >23 %
	LEL	No	1439	0	0-0 %	0.00 %	10 %
	HCN	No	1439	0	0-0 ppm	0.00 ppm	2 ppm
DustTrak 1	PM2.5	See PM-2.5 Action Levels	1440	1440	5-1570 µg/m3	22.18 µg/m3	See PM-2.5 Action Levels
SPM Flex 1	Ammonia (NH3)	No	1440	0	0-0 ppm	0.00 ppm	30 ppm
SPM Flex 2	Nitric Acid (HNO3)	No	1439	0	0-0 ppm	0.00 ppm	0.16 ppm

Station 02 - Tier I							
Instrument	Analyte	Action Level Exceedance?	Number of Readings	Number of Detections	Concentration Range	Period Average	Action Level
AreaRAE 2	VOC	No	1439	1068	0-800 ppb	241.12 ppb	9000 ppb
	CO	No	1439	0	0-0 ppm	0.00 ppm	83 ppm
	H2S	No	1439	0	0-0 ppm	0.00 ppm	0.51 ppm
	O2	No	1439	1439	20.9-20.9 %	20.90 %	<19.5 or >23 %
	LEL	No	1439	0	0-0 %	0.00 %	10 %
	HCN	No	1439	408	0-1.9 ppm	0.09 ppm	2 ppm
DustTrak 2	PM2.5	See PM-2.5 Action Levels	1453	1453	11-1730 µg/m3	27.36 µg/m3	See PM-2.5 Action Levels
SPM Flex 3	Ammonia (NH3)	No	1440	0	0-0 ppm	0.00 ppm	30 ppm
SPM Flex 4	Nitric Acid (HNO3)	No	1440	0	0-0 ppm	0.00 ppm	0.16 ppm

Station 03 - Tier I							
Instrument	Analyte	Action Level Exceedance?	Number of Readings	Number of Detections	Concentration Range	Period Average	Action Level
AreaRAE 3	VOC	No	1439	94	0-33 ppb	0.67 ppb	9000 ppb
	CO	No	1439	0	0-0 ppm	0.00 ppm	83 ppm
	H2S	No	1439	0	0-0 ppm	0.00 ppm	0.51 ppm
	O2	No	1439	1439	20.5-21.6 %	21.01 %	<19.5 or >23 %
	LEL	No	1439	0	0-0 %	0.00 %	10 %
	HCN	No	1439	667	0-0.4 ppm	0.06 ppm	2 ppm
DustTrak 3	PM2.5	See PM-2.5 Action Levels	1440	1440	8-738 µg/m3	14.00 µg/m3	See PM-2.5 Action Levels
SPM Flex 5	Ammonia (NH3)	No	1439	16	0-0.01 ppm	0.00 ppm	30 ppm
SPM Flex 6	Nitric Acid (HNO3)	No	1439	0	0-0 ppm	0.00 ppm	0.16 ppm

Air Monitoring Summary Tables

The tables below summarize monitoring data collected using EPA's Viper wireless remote monitoring system. The "Number of Readings" are artificially reduced to manage large quantities of data for this report. Further discussion is provided in the notes section on page 5.



Project Name: Applegate Lane Containers

**From: 10/25/23
7:01 AM**

**To: 10/26/23
6:59 AM**

Station 04 - Tier 1							
Instrument	Analyte	Action Level Exceedance?	Number of Readings	Number of Detections	Concentration Range	Period Average	Action Level
AreaRae 4	VOC	No	1439	1439	288-689 ppb	543.18 ppb	9000 ppb
	CO	No	1439	0	0-0 ppm	0.00 ppm	83 ppm
	H2S	No	1439	0	0-0 ppm	0.00 ppm	0.51 ppm
	O2	No	1439	1439	20.3-20.4 %	20.32 %	<19.5 or >23 %
	LEL	No	1439	0	0-0 %	0.00 %	10 %
	HCN	No	1439	171	0-0.2 ppm	0.01 ppm	2 ppm
DustTrak 4	PM2.5	See PM-2.5 Action Levels	1440	1440	8-359 µg/m3	12.10 µg/m3	See PM-2.5 Action Levels
SPM Flex 7	Ammonia (NH3)	No	1440	238	0-0.27 ppm	0.01 ppm	30 ppm
SPM Flex 8	Nitric Acid (HNO3)	No	1439	0	0-0 ppm	0.00 ppm	0.16 ppm

Station 05 - Tier I							
Instrument	Analyte	Action Level Exceedance?	Number of Readings	Number of Detections	Concentration Range	Period Average	Action Level
AreaRae 5	VOC	No	1439	1021	0-503 ppb	226.77 ppb	9000 ppb
	CO	No	1439	0	0-0 ppm	0.00 ppm	83 ppm
	H2S	No	1439	0	0-0 ppm	0.00 ppm	0.51 ppm
	O2	No	1439	1439	20.9-20.9 %	20.90 %	<19.5 or >23 %
	LEL	No	1439	0	0-0 %	0.00 %	10 %
	HCN	No	1439	277	0-0.3 ppm	0.03 ppm	2 ppm
DustTrak 5	PM2.5	See PM-2.5 Action Levels	1440	1440	11-1010 µg/m3	16.34 µg/m3	See PM-2.5 Action Levels
SPM Flex 9	Ammonia (NH3)	No	1440	257	0-0.79 ppm	0.02 ppm	30 ppm
SPM Flex 10	Nitric Acid (HNO3)	No	1439	0	0-0 ppm	0.00 ppm	0.16 ppm

Station 06 - Tier I							
Instrument	Analyte	Action Level Exceedance?	Number of Readings	Number of Detections	Concentration Range	Period Average	Action Level
AreaRae 6	VOC	No	1439	1439	119-443 ppb	303.05 ppb	9000 ppb
	CO	No	1439	0	0-0 ppm	0.00 ppm	83 ppm
	H2S	No	1439	0	0-0 ppm	0.00 ppm	0.51 ppm
	O2	No	1439	1439	20.1-20.6 %	20.24 %	<19.5 or >23 %
	LEL	No	1439	327	0-3 %	0.54 %	10 %
	HCN	No	1439	0	0-0 ppm	0.00 ppm	2 ppm
DustTrak 6	PM2.5	See PM-2.5 Action Levels	1455	1455	9-2150 µg/m3	35.05 µg/m3	See PM-2.5 Action Levels
SPM Flex 11	Ammonia (NH3)	No	1439	446	0-0.47 ppm	0.02 ppm	30 ppm
SPM Flex 12	Nitric Acid (HNO3)	No	1440	0	0-0 ppm	0.00 ppm	0.16 ppm

Air Monitoring Summary Tables

The tables below summarize monitoring data collected using EPA's Viper wireless remote monitoring system. The "Number of Readings" are artificially reduced to manage large quantities of data for this report. Further discussion is provided in the notes section on page 5.



Project Name: Applegate Lane Containers

**From: 10/25/23
7:01 AM**

**To: 10/26/23
6:59 AM**

Station 07 - Tier I							
Instrument	Analyte	Action Level Exceedance?	Number of Readings	Number of Detections	Concentration Range	Period Average	Action Level
AreaRae 7	VOC	No	1439	1439	404-930 ppb	692.56 ppb	9000 ppb
	CO	No	1439	7	0-4 ppm	0.02 ppm	83 ppm
	H2S	No	1439	0	0-0 ppm	0.00 ppm	0.51 ppm
	O2	No	1439	1439	20-20.6 %	20.15 %	<19.5 or >23 %
	LEL	No	1439	0	0-0 %	0.00 %	10 %
	HCN	No	1439	5	0-0.1 ppm	0.00 ppm	2 ppm
DustTrak 7	PM2.5	See PM-2.5 Action Levels	1439	1439	10-732 µg/m3	23.32 µg/m3	See PM-2.5 Action Levels
SPM Flex 13	Ammonia (NH3)	No	1439	222	0-0.64 ppm	0.01 ppm	30 ppm
SPM Flex 14	Nitric Acid (HNO3)	No	1439	0	0-0 ppm	0.00 ppm	0.16 ppm

Station 10 - Tier II							
Instrument	Analyte	Action Level Exceedance?	Number of Readings	Number of Detections	Concentration Range	Period Average	Action Level
AreaRae 10	VOC	No	1440	0	0-0 ppb	0.00 ppb	9000 ppb
	CO	No	1440	0	0-0 ppm	0.00 ppm	83 ppm
	H2S	No	1440	0	0-0 ppm	0.00 ppm	0.51 ppm
	O2	No	1440	1440	20.9-20.9 %	20.90 %	<19.5 or >23 %
	LEL	No	1440	0	0-0 %	0.00 %	10 %
	HCN	No	1440	0	0-0 ppm	0.00 ppm	2 ppm
DustTrak 10	PM2.5	See PM-2.5 Action Levels	1439	1439	6-120 µg/m3	11.38 µg/m3	See PM-2.5 Action Levels
SPM Flex 19	Ammonia (NH3)	No	1439	282	0-0.62 ppm	0.02 ppm	30 ppm
SPM Flex 20	Nitric Acid (HNO3)	No	1439	0	0-0 ppm	0.00 ppm	0.16 ppm

Station 11 - Tier II							
Instrument	Analyte	Action Level Exceedance?	Number of Readings	Number of Detections	Concentration Range	Period Average	Action Level
AreaRae 11	VOC	No	1440	1424	0-951 ppb	558.41 ppb	9000 ppb
	CO	No	1440	0	0-0 ppm	0.00 ppm	83 ppm
	H2S	No	1440	0	0-0 ppm	0.00 ppm	0.51 ppm
	O2	No	1440	1440	20.9-20.9 %	20.90 %	<19.5 or >23 %
	LEL	No	1440	0	0-0 %	0.00 %	10 %
	HCN	No	1440	70	0-0.2 ppm	0.01 ppm	2 ppm
DustTrak 11	PM2.5	See PM-2.5 Action Levels	1439	1439	7-377 µg/m3	14.39 µg/m3	See PM-2.5 Action Levels
SPM Flex 21	Ammonia (NH3)	No	1440	84	0-0.25 ppm	0.00 ppm	30 ppm
SPM Flex 22	Nitric Acid (HNO3)	No	1439	0	0-0 ppm	0.00 ppm	0.16 ppm

Air Monitoring Summary Tables

The tables below summarize monitoring data collected using EPA's Viper wireless remote monitoring system. The "Number of Readings" are artificially reduced to manage large quantities of data for this report. Further discussion is provided in the notes section on page 5.



Project Name: Applegate Lane Containers

**From: 10/25/23
7:01 AM**

**To: 10/26/23
6:59 AM**

Station 12 - Tier II							
Instrument	Analyte	Action Level Exceedance?	Number of Readings	Number of Detections	Concentration Range	Period Average	Action Level
AreaRae 12	VOC	No	1440	1438	0-956 ppb	375.62 ppb	9000 ppb
	CO	No	1440	3	0-16 ppm	0.02 ppm	83 ppm
	H2S	No	1440	0	0-0 ppm	0.00 ppm	0.51 ppm
	O2	No	1440	1440	20.2-20.9 %	20.50 %	<19.5 or >23 %
	LEL	No	1440	0	0-0 %	0.00 %	10 %
	HCN	No	1440	6	0-0.1 ppm	0.00 ppm	2 ppm
DustTrak 12	PM2.5	See PM-2.5 Action Levels	1440	1440	13-158 µg/m3	16.36 µg/m3	See PM-2.5 Action Levels
SPM Flex 23	Ammonia (NH3)	No	1440	41	0-0.02 ppm	0.00 ppm	30 ppm
SPM Flex 24	Nitric Acid (HNO3)	No	1439	0	0-0 ppm	0.00 ppm	0.16 ppm

Station 13 - Tier II							
Instrument	Analyte	Action Level Exceedance?	Number of Readings	Number of Detections	Concentration Range	Period Average	Action Level
AreaRae 13	VOC	No	1440	1193	0-239 ppb	128.68 ppb	9000 ppb
	CO	No	1440	0	0-0 ppm	0.00 ppm	83 ppm
	H2S	No	1440	0	0-0 ppm	0.00 ppm	0.51 ppm
	O2	No	1440	1440	20.9-20.9 %	20.90 %	<19.5 or >23 %
	LEL	No	1440	0	0-0 %	0.00 %	10 %
	HCN	No	1440	41	0-0.3 ppm	0.00 ppm	2 ppm
DustTrak 13	PM2.5	See PM-2.5 Action Levels	1439	1439	9-338 µg/m3	13.67 µg/m3	See PM-2.5 Action Levels
SPM Flex 25	Ammonia (NH3)	No	1439	0	0-0 ppm	0.00 ppm	30 ppm
SPM Flex 26	Nitric Acid (HNO3)	No	1439	0	0-0 ppm	0.00 ppm	0.16 ppm

Station 14 - Tier II							
Instrument	Analyte	Action Level Exceedance?	Number of Readings	Number of Detections	Concentration Range	Period Average	Action Level
AreaRae 14	VOC	No	1440	0	0-0 ppb	0.00 ppb	9000 ppb
	CO	No	1440	3	0-7 ppm	0.01 ppm	83 ppm
	H2S	No	1440	0	0-0 ppm	0.00 ppm	0.51 ppm
	O2	No	1440	1440	20.9-21.8 %	20.98 %	<19.5 or >23 %
	LEL	No	1440	0	0-0 %	0.00 %	10 %
	HCN	No	1440	0	0-0 ppm	0.00 ppm	2 ppm
DustTrak 14	PM2.5	See PM-2.5 Action Levels	1439	1439	7-30 µg/m3	15.32 µg/m3	See PM-2.5 Action Levels
SPM Flex 27	Ammonia (NH3)	No	1439	125	0-0.32 ppm	0.00 ppm	30 ppm
SPM Flex 28	Nitric Acid (HNO3)	No	1440	0	0-0 ppm	0.00 ppm	0.16 ppm

Air Monitoring Summary Tables

The tables below summarize monitoring data collected using EPA's Viper wireless remote monitoring system. The "Number of Readings" are artificially reduced to manage large quantities of data for this report. Further discussion is provided in the notes section on page 5.



Project Name: Applegate Lane Containers

From: 10/25/23
7:01 AM

To: 10/26/23
6:59 AM

Notes:

Air monitoring instruments around the site are continuously operating 24-hours per day and transmitting to a central location. When elevated readings are detected, response personnel at the Site are automatically notified so that confirmation and appropriate actions can take place. Each day, these instruments collect 44 million records and 5GB of data. To generate this summary report, the number of records have been artificially reduced by using one reading per minute from each instrument - this does not affect the period average has no significant effect on the concentration range. No data is lost and elevated concentrations of any analyte being measured at the Site would be sufficiently represented within the data shown here.

Ammonia Detections: Multiple instruments show low levels of Ammonia detections below 1.0 ppm. This is below the action level of 30 ppm based on the most protective Acute Exposure Guideline Levels for a 1-hour average exposure. EPA has provided this data to the Agency of Toxic Substances and Disease Registry (ASTDR) for review and an assessment of these data have been provided in the Air Monitoring Data Summary Report for Oct 17 at 0700 to Oct 18 at 0700.

HCN Detections: Multiple instruments show low levels of hydrogen cyanide detections below 0.4 ppm. This is below the action level of 2 ppm based on the most protective Acute Exposure Guideline Levels for a 1-hour average exposure. EPA has provided this data to ATSDR for review and an assessment of these data have been provided in the Air Monitoring Data Summary Report for Oct 24 at 0700 to Oct 25 at 0700

Analyte	Definition	Action Level Reference
VOC	Volatile Organic Compounds	AEGL-1 8hr for Benzene
CO	Carbon Monoxide	AEGL-2 1hr
H2S	Hydrogen Sulfide	AEGL-1 1hr
O2	Oxygen	29 CFR 1910.146, Confined Spaces
LEL	Lower Explosive Limit	29 CFR 1910.146, Confined Spaces
NH3	Ammonia	AEGL-1 1hr
HNO3	Nitric Acid	AEGL-1, 1hr
SO2	Sulfur Dioxide	AEGL-1 1hr
Cl2	Chlorine	AEGL-1 1hr
HCN	Hydrogen Cyanide	AEGL-1 1hr
NO	Nitric Oxide	PAC-1 (compare Cl2 and H2S PAC-1 to AEGL-1)
PM 2.5	Particulate Matter 2.5	See PM-2.5 Action Levels Sheet

%	Percent
<	Less than
>	Greater than
AEGL	Acute Exposure Guideline Levels for Airborne Chemicals
C/m	Counts (ionization events) per minute
mg/m3	milligrams per cubic meter
min	Minute
PAC	Protective Action Criteria
PEL	Permissible exposure limit
ppb	Parts per billion
ppm	Parts per million
PM	Particulate Matter
SOG	Standard Operating Guidelines
SPM	Single Point Monitor
TEEL	Temporary Emergency Exposure Limit
TLV	Threshold Limit Value
µg/m3	Micrograms per cubic meter
µrem/h	Microrem per hour



Legend



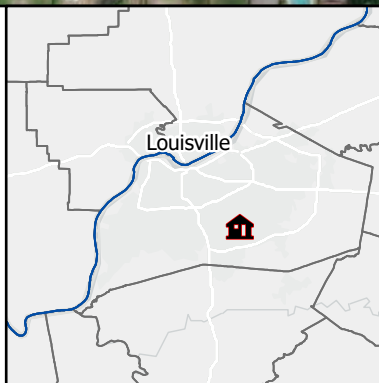
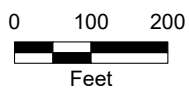
6213 Applegate Lane



Tier I



Tier II



United States
Environmental Protection Agency
Region 4

Applegate Lane Container Site Air Monitoring Station Locations

City:
Louisville

County:
Jefferson

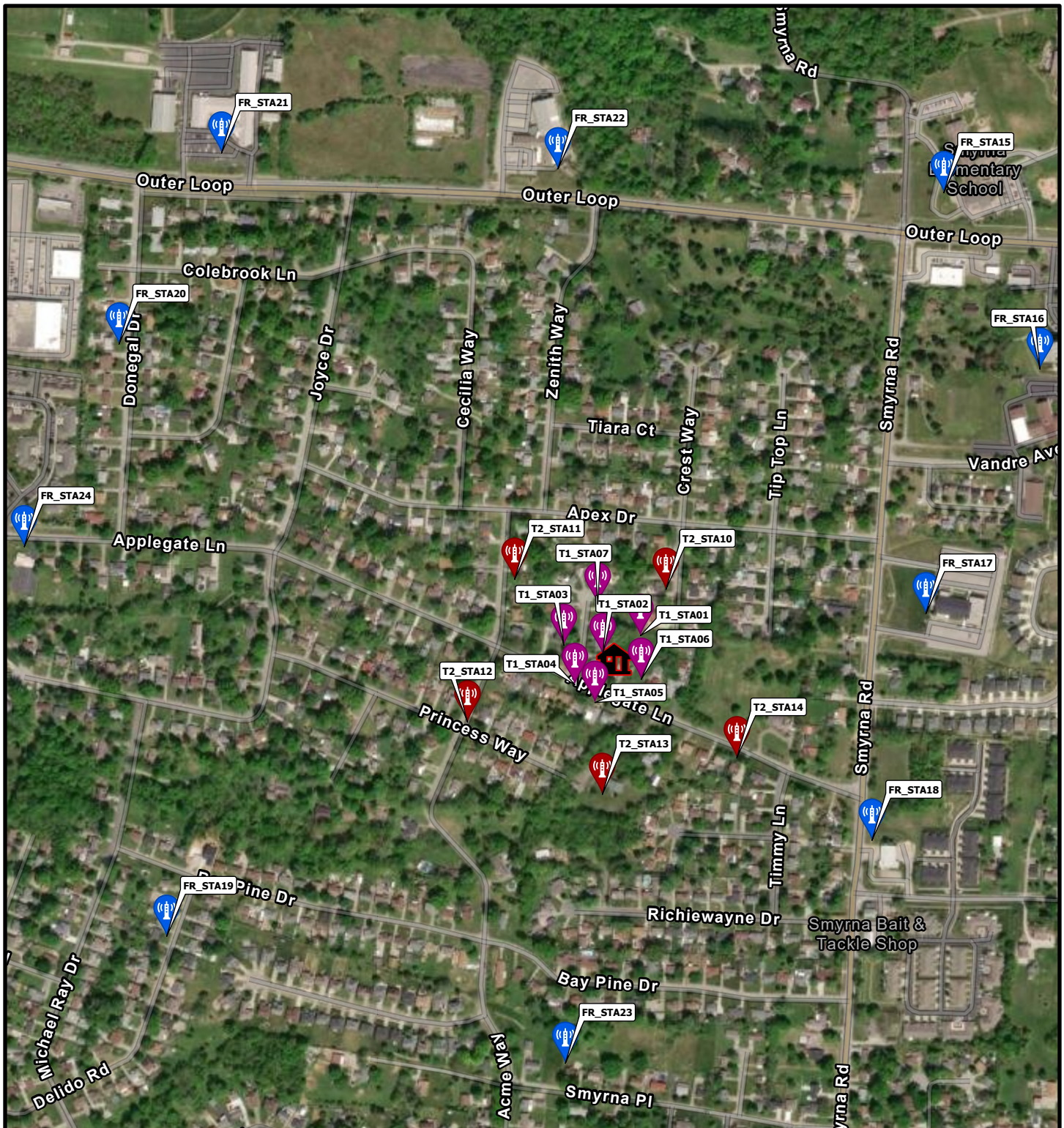
State:
Kentucky



TETRA TECH

Date:
10/10/2023

Analyst:
MORGAN.TORRES



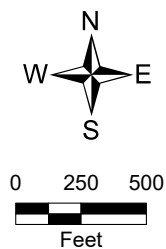
Legend

 6213 Applegate Lane

 Tier I

 Tier II

 Contingency



United States
Environmental Protection Agency
Region 4

Applegate Lane Container Site Air Monitoring Station Locations

City:
Louisville

County:
Jefferson

State:
Kentucky



TETRA TECH

Date:
10/10/2023
Analyst:
MORGAN.TORRES

PM2.5 (Particulate Matter ≤ 2.5 microns) Community Action Threshold Levels				
For Unified Command Use				
1-Hour Average (µg/m3)	24-Hour Average (µg/m3)	Level of Health Concern	Meaning	Action
0.0 - 40.0	0.0-12.0	Good	Air Quality is considered satisfactory, and air pollution poses little or no risk.	Implement communication plan.
40.1 - 80.0	12.1 - 35.4	Moderate	Air quality is acceptable; however, for some pollutants there may be a moderate health concern for a very small number of people who are unusually sensitive to air pollution.	Issue public announcement about health effects. Stay out of areas with visible smoke.
80.1 - 175.0	35.5 - 55.4	Unhealthy for Sensitive Groups	Members of sensitive groups may experience health effects. The general public is not likely to be affected.	Recommend evacuation or shelter-in-place for sensitive populations.
175.1 - 300.0	55.5 - 150.4	Unhealthy	Everyone may begin to experience health effects; members of sensitive groups may experience more serious health effects.	Consider closing schools and cancelling outdoor events. Recommend shelter-in-place for affected neighborhoods.
300.1 - 500.0	150.5 - 250.4	Very Unhealthy	Health warnings of emergency conditions. The entire population is more likely to be affected.	Consider closing schools and cancel all outdoor events. Recommend shelter-in-place and/or evacuation for affected neighborhoods.
> 500.0	> 250.5	Hazardous	Health alert: everyone may experience more serious health effects.	Recommend closing schools & cancel outdoor events. Recommend closing workplaces and evacuating affected neighborhoods.

See The National Ambient Air Quality Standards for Particle Pollution REVISED AIR QUALITY STANDARDS FOR PARTICLE POLLUTION AND UPDATES TO THE AIR QUALITY INDEX (AQI) (https://www.epa.gov/sites/default/files/2016-04/documents/2012_aqi_factsheet.pdf)