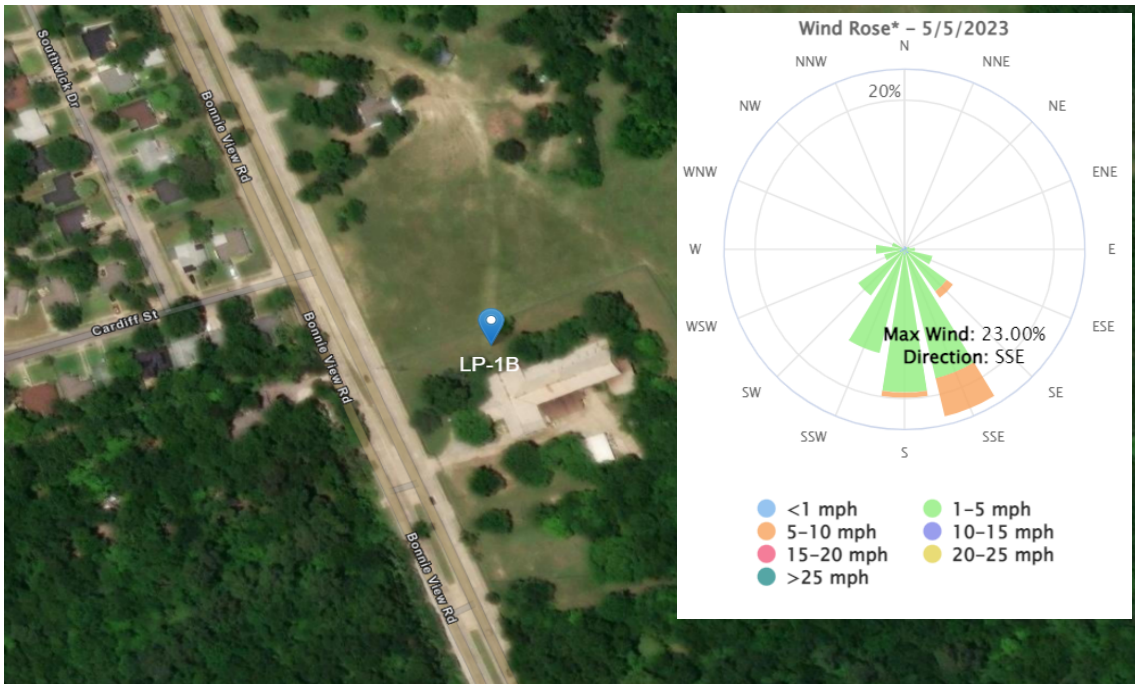




Lane Plating Removal Action

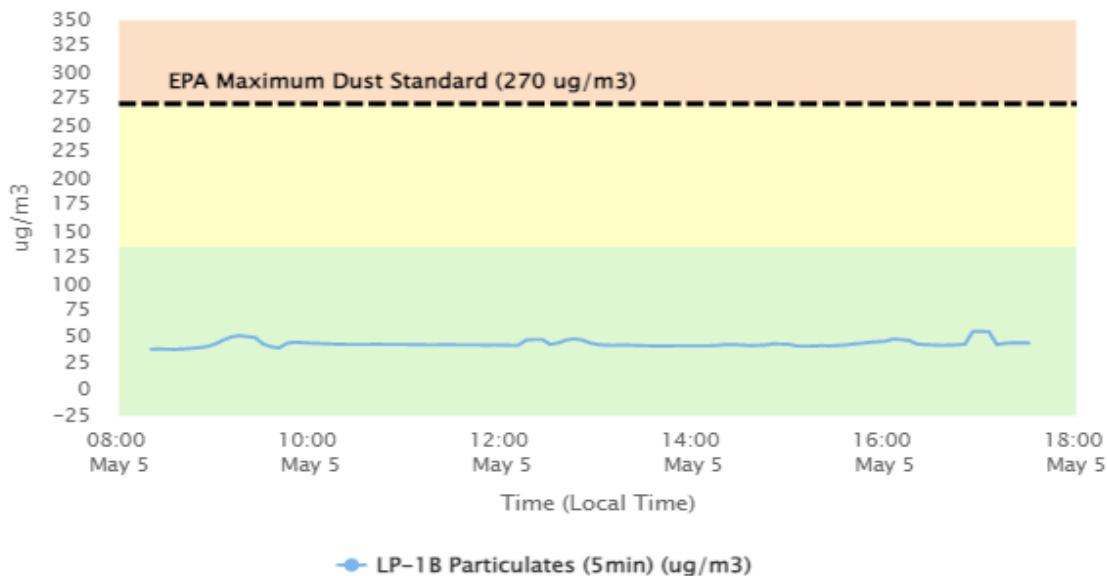
Perimeter Air Monitoring Daily Report (5/5/2023)

For Location LP-1



To better understand in what direction and how strong the wind is blowing at the Lane Plating Site, please see the Wind Rose (shown in the top righthand corner of the map). A Wind Rose is a vivid chart showing the wind's direction, its frequency, and its speed at a specific location. A Wind Rose shows the direction of the wind by the length of the "bars" or "petals." A day with consistent wind directions will have one or two long petals. A day with different wind directions will have many shorter similar-length petals. For instance, a day with one long petal pointing north (N) means that winds mainly blew from the north in a southerly direction. The Wind Rose also shows a percentage (%) of time during which the wind blew in one direction or another.

Dust Monitoring



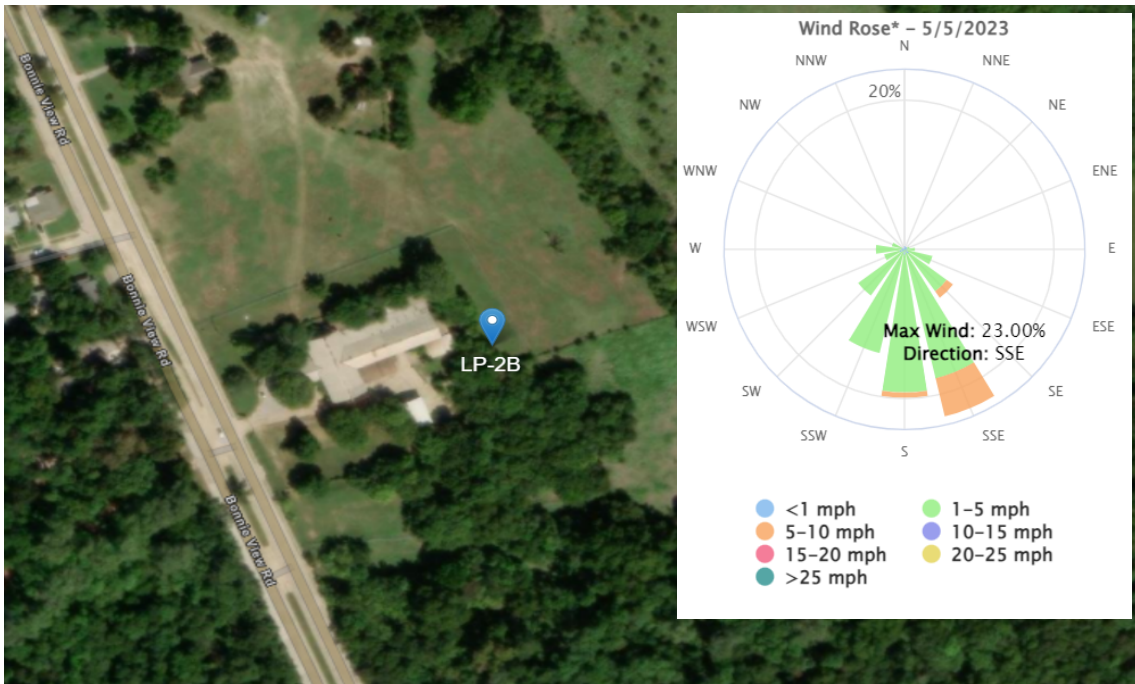
Stat	Reading (ug/m3)	Time Occurred
Min	37.15	9:35:20 AM
Max	54.32	5:55:20 PM
Avg	42.40	5/5/2023
N/A		



Lane Plating Removal Action

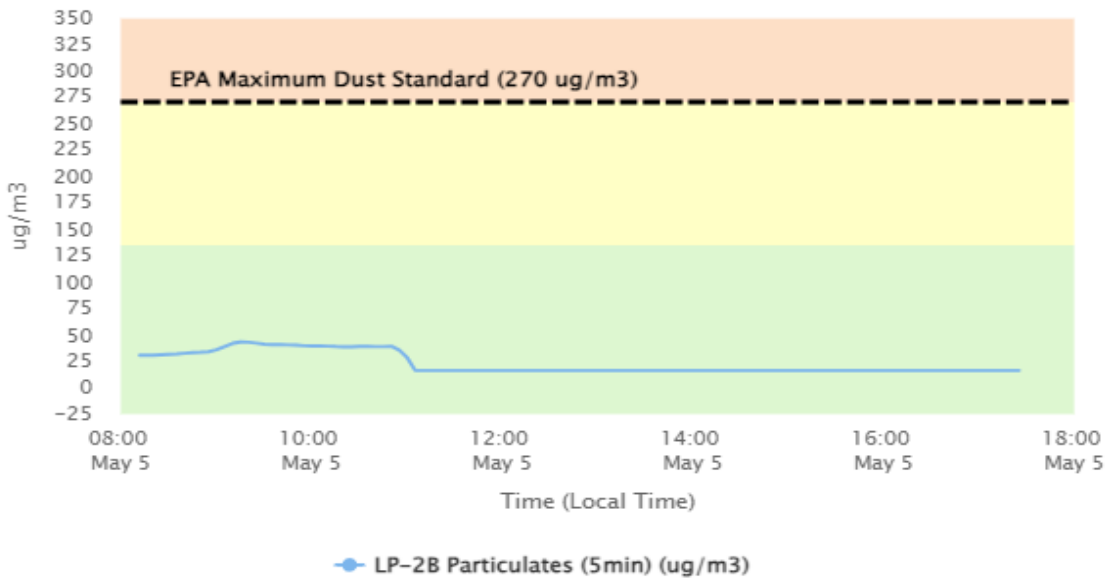
Perimeter Air Monitoring Daily Report (5/5/2023)

For Location LP-2



To better understand in what direction and how strong the wind is blowing at the Lane Plating Site, please see the Wind Rose (shown in the top righthand corner of the map). A Wind Rose is a vivid chart showing the wind's direction, its frequency, and its speed at a specific location. A Wind Rose shows the direction of the wind by the length of the "bars" or "petals." A day with consistent wind directions will have one or two long petals. A day with different wind directions will have many shorter similar-length petals. For instance, a day with one long petal pointing north (N) means that winds mainly blew from the north in a southerly direction. The Wind Rose also shows a percentage (%) of time during which the wind blew in one direction or another.

Dust Monitoring



Stat	Reading (ug/m3)	Time Occurred
Min	15.53	12:05:20 PM
Max	42.63	10:15:20 AM
Avg	22.19	5/5/2023

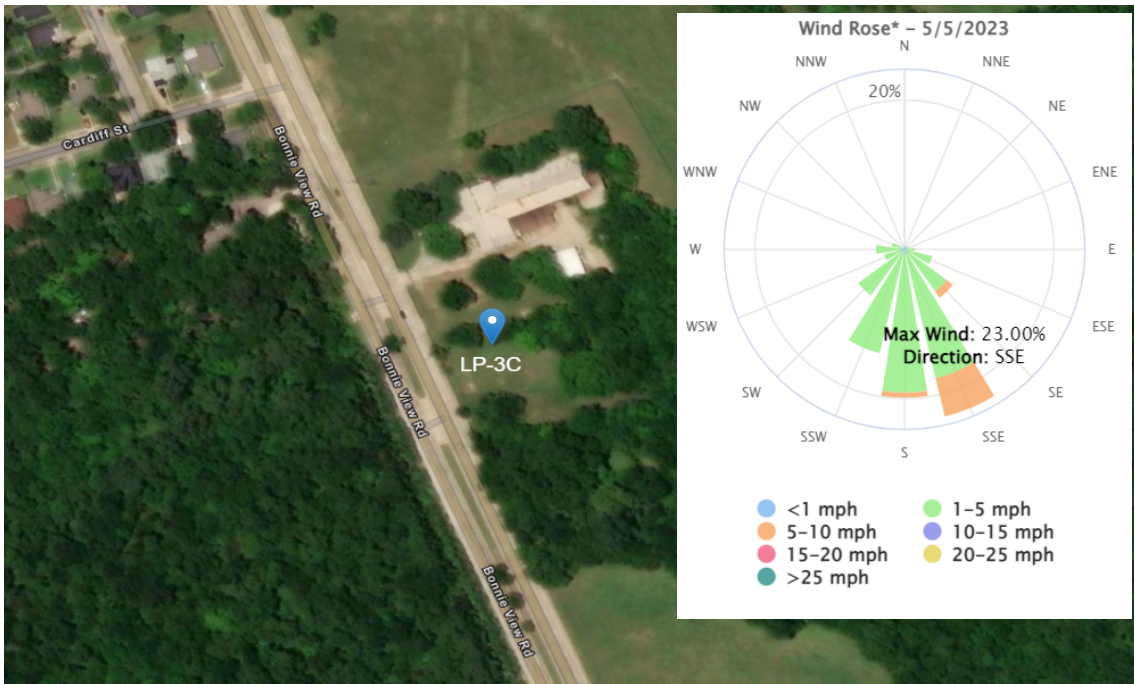
Due to a faulty sensor in the easternmost, DustTrak LP-2B, the DustTrak could not collect information from 11:05 am to 05:25 pm. The data for the period was flagged and is invalid. It appears on the graph from 11:05 am to 05:25 pm at 15.53 ug/m3. The most downward monitor, LP-1B, averaged 42.4 ug/m3 throughout the day, and no exceedances occurred on the other three DustTrak monitors.



Lane Plating Removal Action

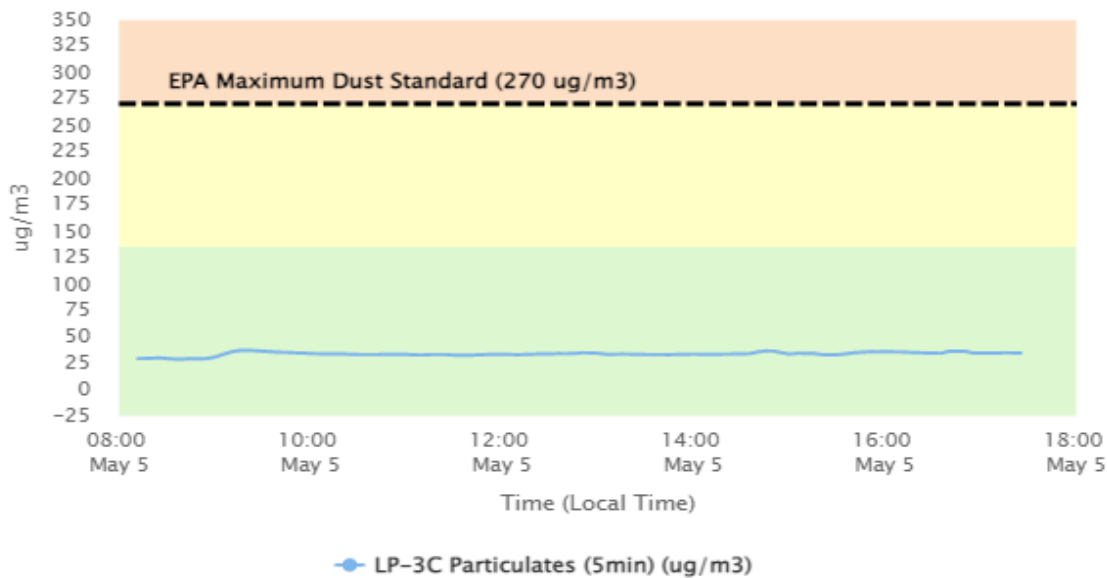
Perimeter Air Monitoring Daily Report (5/5/2023)

For Location LP-3



To better understand in what direction and how strong the wind is blowing at the Lane Plating Site, please see the Wind Rose (shown in the top righthand corner of the map). A Wind Rose is a vivid chart showing the wind's direction, its frequency, and its speed at a specific location. A Wind Rose shows the direction of the wind by the length of the "bars" or "petals." A day with consistent wind directions will have one or two long petals. A day with different wind directions will have many shorter similar-length petals. For instance, a day with one long petal pointing north (N) means that winds mainly blew from the north in a southerly direction. The Wind Rose also shows a percentage (%) of time during which the wind blew in one direction or another.

Dust Monitoring



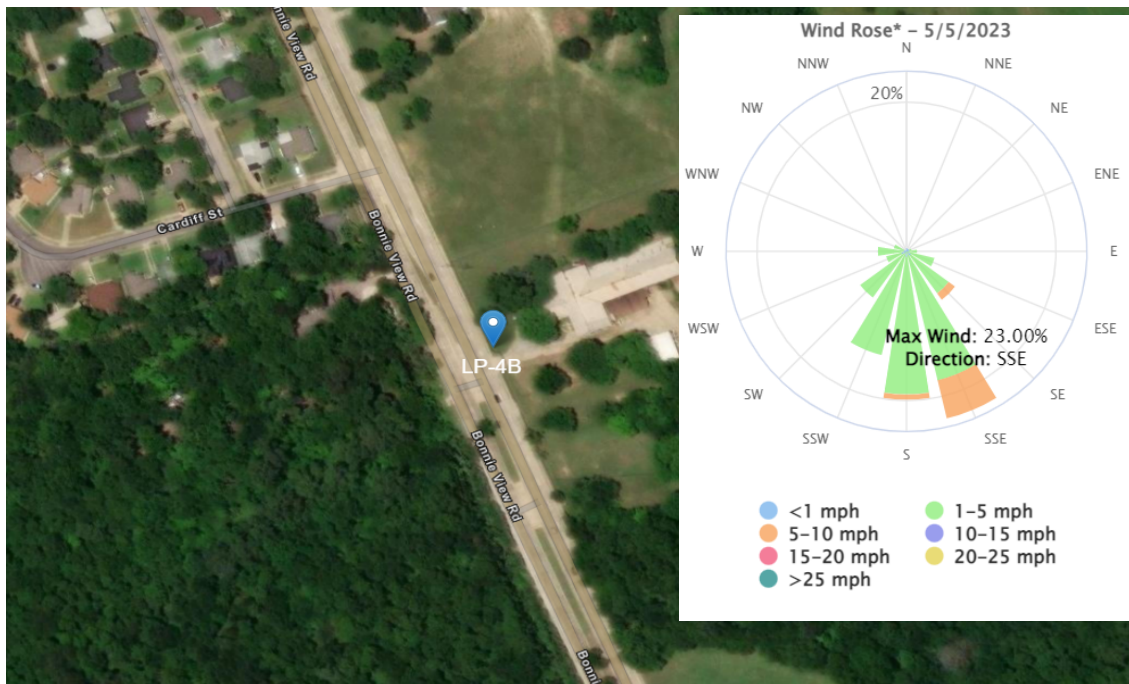
Stat	Reading (ug/m3)	Time Occurred
Min	27.85	9:35:20 AM
Max	36.29	10:20:20 AM
Avg	32.76	5/5/2023
N/A		



Lane Plating Removal Action

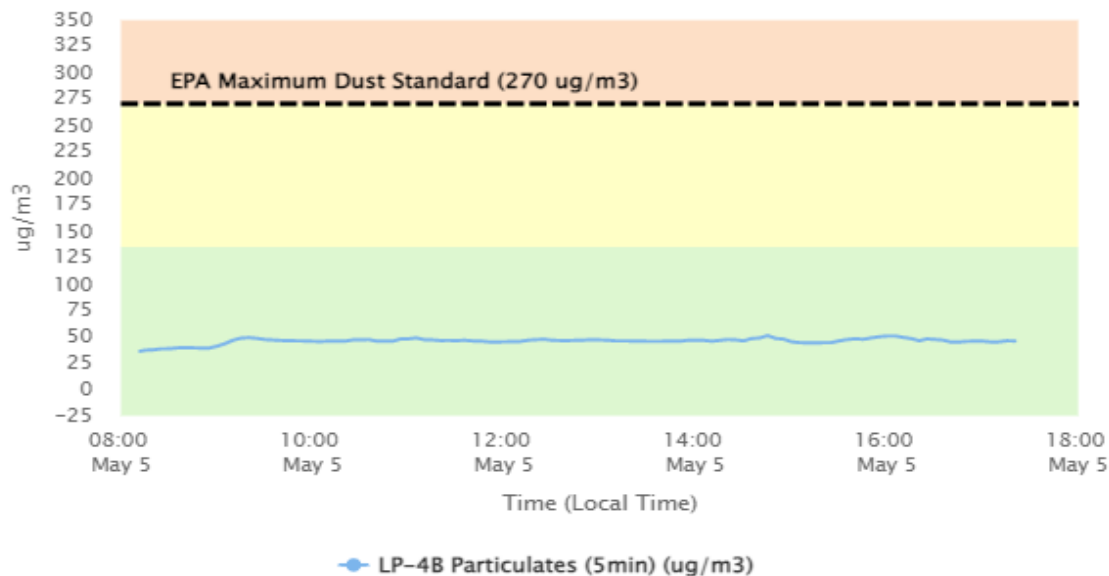
Perimeter Air Monitoring Daily Report (5/5/2023)

For Location LP-4



To better understand in what direction and how strong the wind is blowing at the Lane Plating Site, please see the Wind Rose (shown in the top righthand corner of the map). A Wind Rose is a vivid chart showing the wind's direction, its frequency, and its speed at a specific location. A Wind Rose shows the direction of the wind by the length of the "bars" or "petals." A day with consistent wind directions will have one or two long petals. A day with different wind directions will have many shorter similar-length petals. For instance, a day with one long petal pointing north (N) means that winds mainly blew from the north in a southerly direction. The Wind Rose also shows a percentage (%) of time during which the wind blew in one direction or another.

Dust Monitoring



Stat	Reading (ug/m3)	Time Occurred
Min	35.46	9:12:00 AM
Max	50.23	3:45:20 PM
Avg	44.96	5/5/2023
N/A		