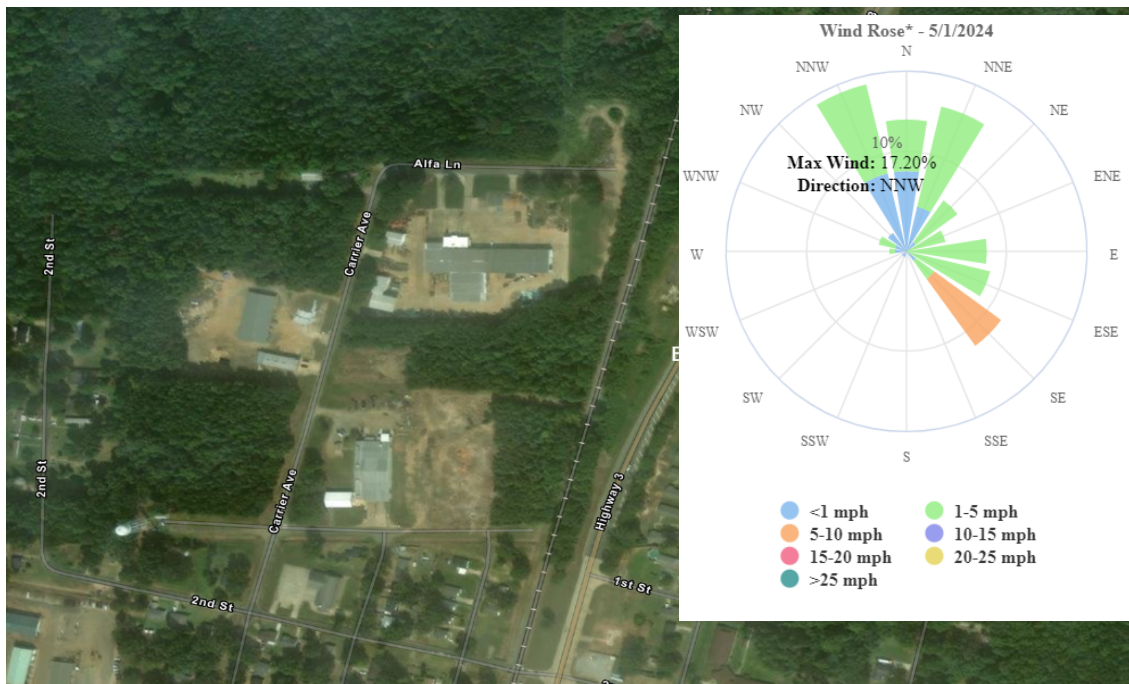




Benton Creosote

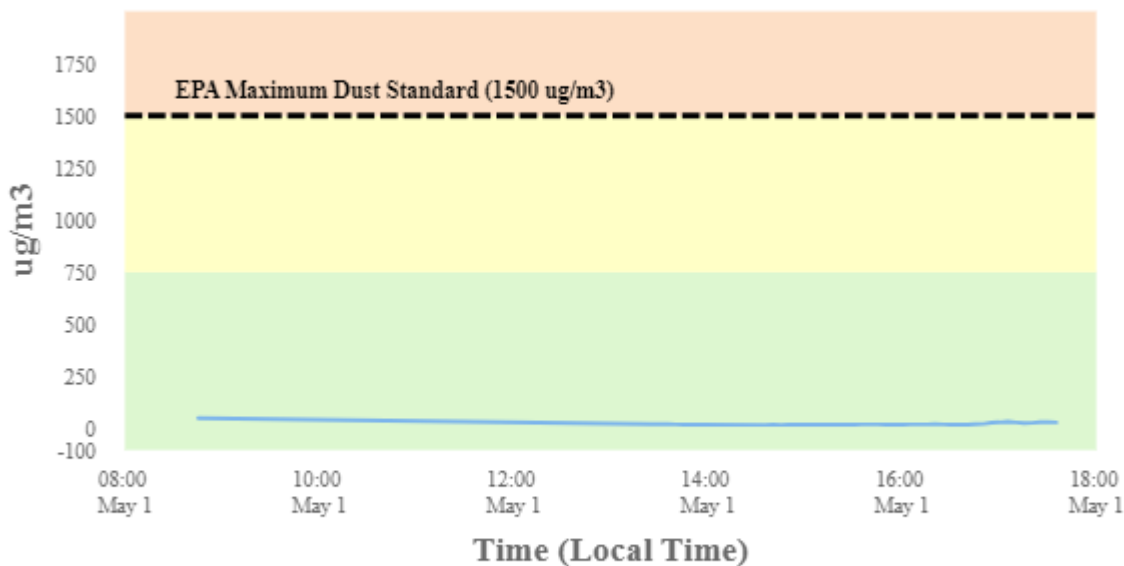
Perimeter Air Monitoring Daily Report (5/1/2024)

For Location BC-1A



To better understand in what direction and how strong the wind is blowing at the Benton Creosote Site, please see the Wind Rose (shown in the top righthand corner of the map). A Wind Rose is a vivid chart showing the wind's direction, its frequency, and its speed at a specific location. A Wind Rose shows the direction of the wind by the length of the "bars" or "petals." A day with consistent wind directions will have one or two long petals. A day with different wind directions will have many shorter similar-length petals. For instance, a day with one long petal pointing north (N) means that winds mainly blew from the north in a southerly direction. The Wind Rose also shows a percentage (%) of time during which the wind blew in one direction or another.

Dust Monitoring



Stat	Reading (ug/m3)	Time Occurred
Min	15.73	2:35:20 PM
Max	47.79	8:45:20 AM
Avg	19.94	5/1/2024
Comments	The site's generator was down from 0800 to approximately 1400 on this day. Therefore, air monitoring data for this timeframe may be missing because the weather station which relays the data runs off of power from the generator.	



Benton Creosote

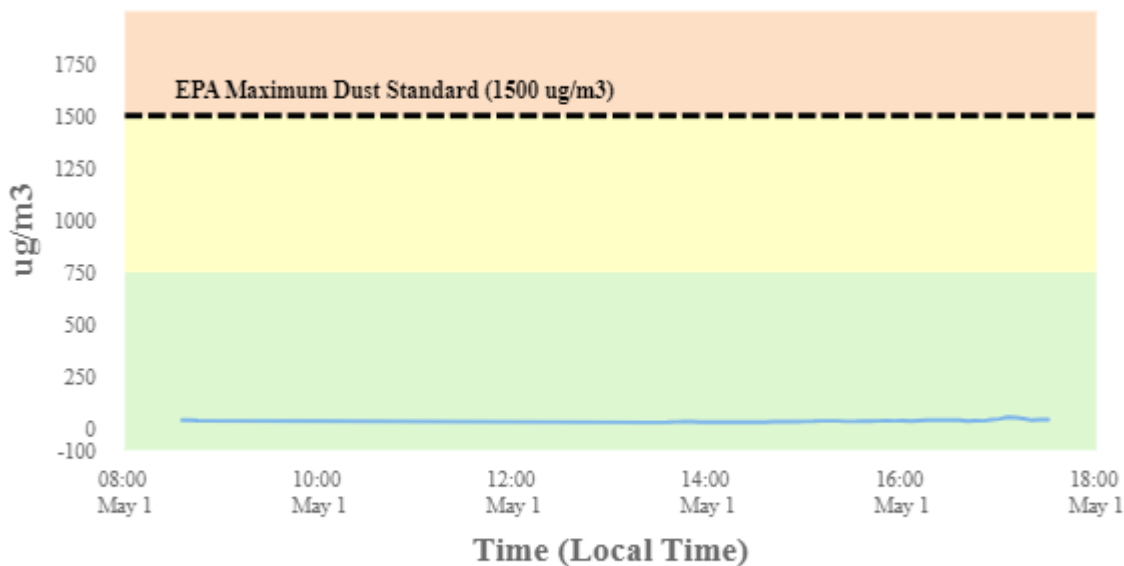
Perimeter Air Monitoring Daily Report (5/1/2024)

For Location BC-2A



To better understand in what direction and how strong the wind is blowing at the Benton Creosote Site, please see the Wind Rose (shown in the top righthand corner of the map). A Wind Rose is a vivid chart showing the wind's direction, its frequency, and its speed at a specific location. A Wind Rose shows the direction of the wind by the length of the "bars" or "petals." A day with consistent wind directions will have one or two long petals. A day with different wind directions will have many shorter similar-length petals. For instance, a day with one long petal pointing north (N) means that winds mainly blew from the north in a southerly direction. The Wind Rose also shows a percentage (%) of time during which the wind blew in one direction or another.

Dust Monitoring



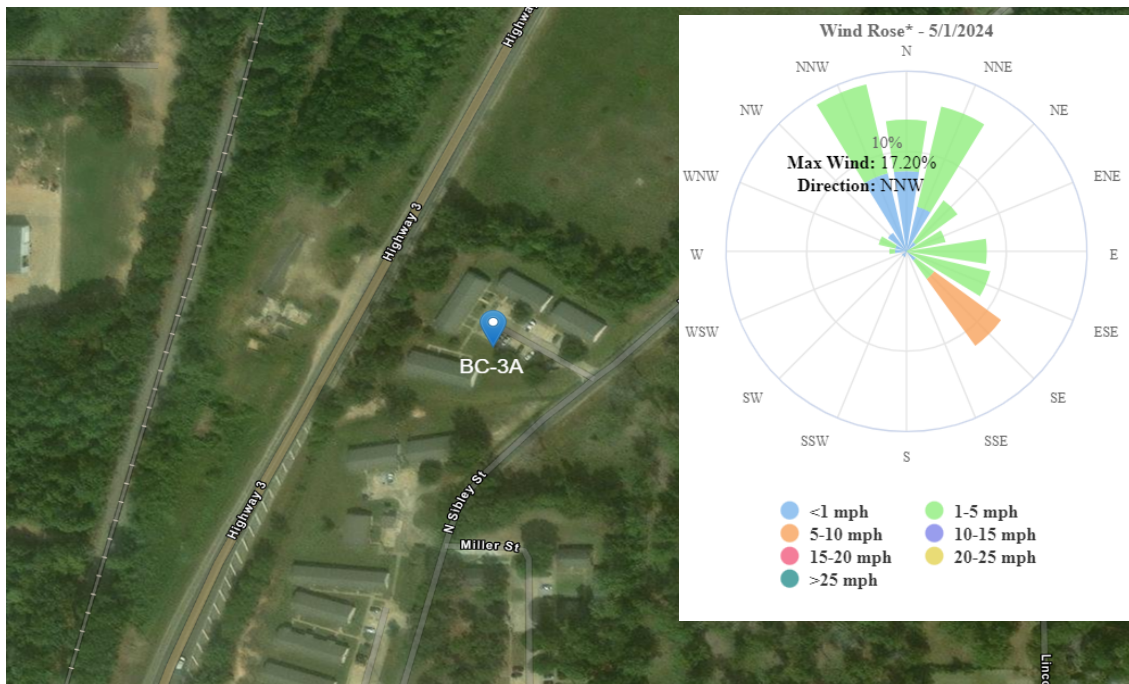
Stat	Reading (ug/m3)	Time Occurred
Min	27.65	1:30:20 PM
Max	52.89	5:05:20 PM
Avg	35.26	5/1/2024
Comments	The site's generator was down from 0800 to approximately 1400 on this day. Therefore, air monitoring data for this timeframe may be missing because the weather station which relays the data runs off of power from the generator.	



Benton Creosote

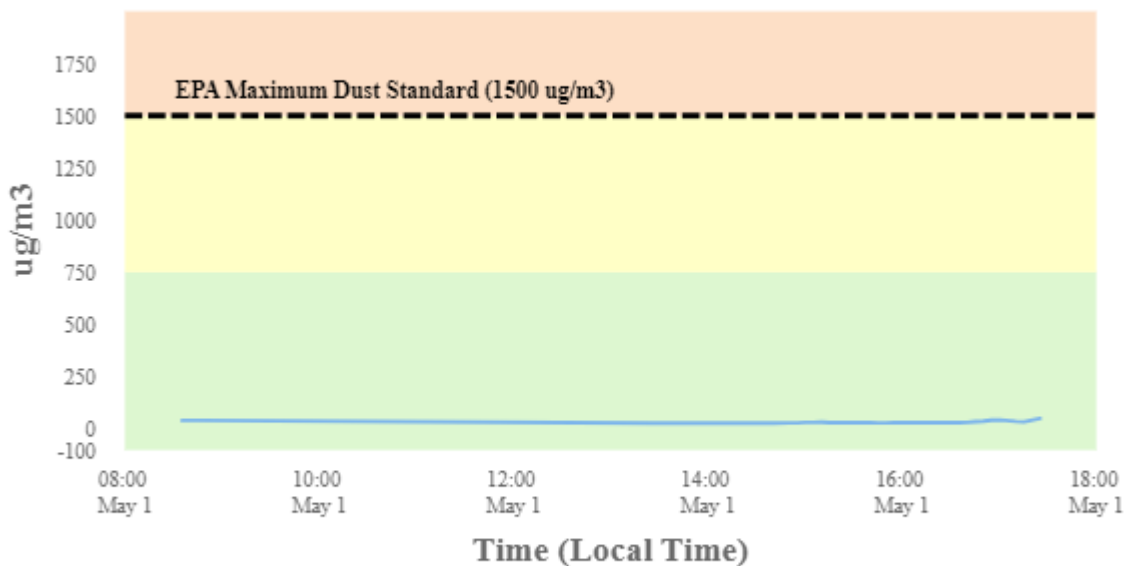
Perimeter Air Monitoring Daily Report (5/1/2024)

For Location BC-3A



To better understand in what direction and how strong the wind is blowing at the Benton Creosote Site, please see the Wind Rose (shown in the top righthand corner of the map). A Wind Rose is a vivid chart showing the wind's direction, its frequency, and its speed at a specific location. A Wind Rose shows the direction of the wind by the length of the "bars" or "petals." A day with consistent wind directions will have one or two long petals. A day with different wind directions will have many shorter similar-length petals. For instance, a day with one long petal pointing north (N) means that winds mainly blew from the north in a southerly direction. The Wind Rose also shows a percentage (%) of time during which the wind blew in one direction or another.

Dust Monitoring



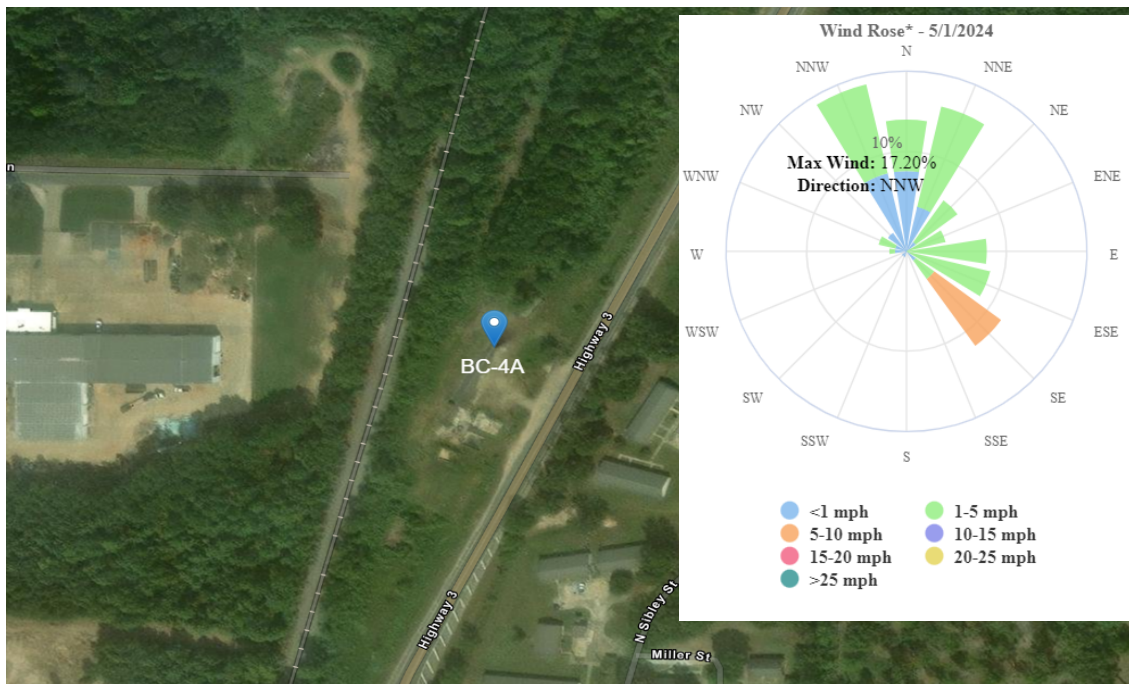
Stat	Reading (ug/m3)	Time Occurred
Min	23.69	2:40:20 PM
Max	39.72	5:00:20 PM
Avg	27.99	5/1/2024
Comments	The site's generator was down from 0800 to approximately 1400 on this day. Therefore, air monitoring data for this timeframe may be missing because the weather station which relays the data runs off of power from the generator.	



Benton Creosote

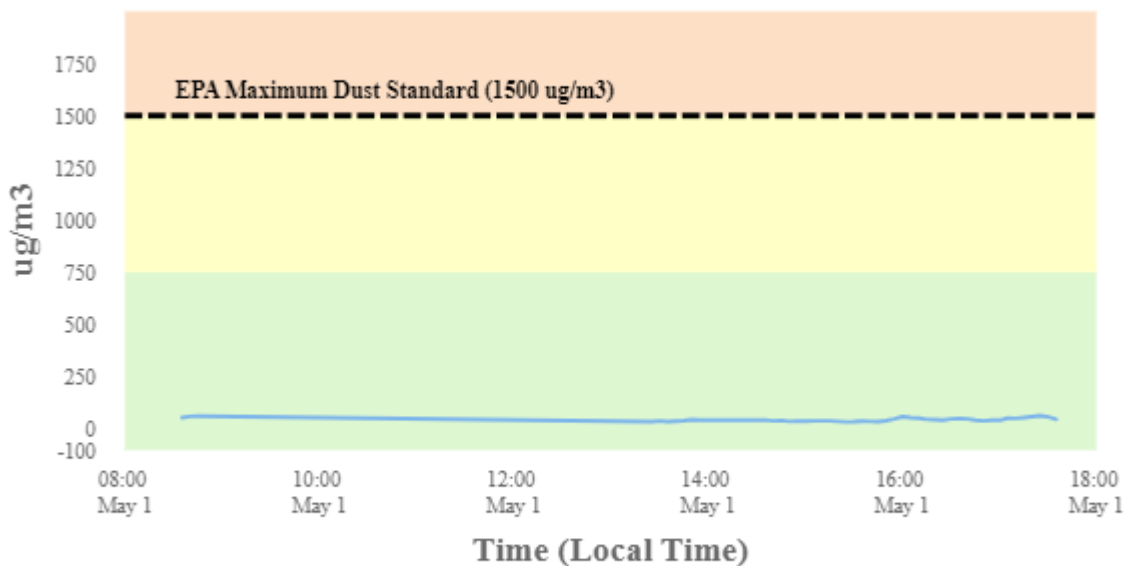
Perimeter Air Monitoring Daily Report (5/1/2024)

For Location BC-4A



To better understand in what direction and how strong the wind is blowing at the Benton Creosote Site, please see the Wind Rose (shown in the top righthand corner of the map). A Wind Rose is a vivid chart showing the wind's direction, its frequency, and its speed at a specific location. A Wind Rose shows the direction of the wind by the length of the "bars" or "petals." A day with consistent wind directions will have one or two long petals. A day with different wind directions will have many shorter similar-length petals. For instance, a day with one long petal pointing north (N) means that winds mainly blew from the north in a southerly direction. The Wind Rose also shows a percentage (%) of time during which the wind blew in one direction or another.

Dust Monitoring



Stat	Reading (ug/m3)	Time Occurred
Min	29.78	3:25:20 PM
Max	59.87	5:25:20 PM
Avg	40.52	5/1/2024
Comments	The site's generator was down from 0800 to approximately 1400 on this day. Therefore, air monitoring data for this timeframe may be missing because the weather station which relays the data runs off of power from the generator.	