



Benton Creosote

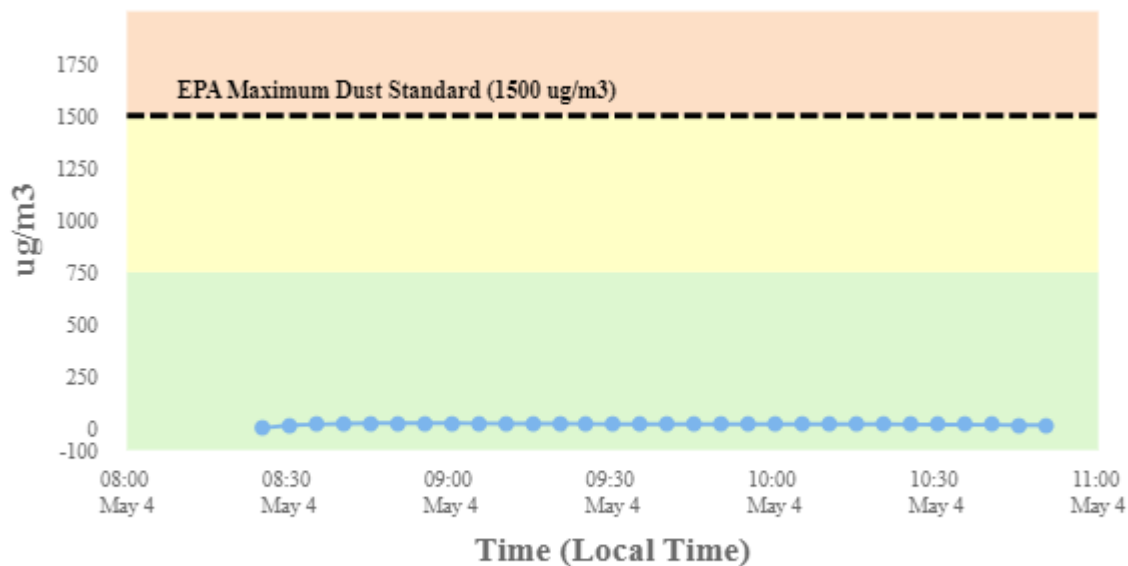
Perimeter Air Monitoring Daily Report (5/4/2024)

For Location BC-1A



To better understand in what direction and how strong the wind is blowing at the Benton Creosote Site, please see the Wind Rose (shown in the top righthand corner of the map). A Wind Rose is a vivid chart showing the wind's direction, its frequency, and its speed at a specific location. A Wind Rose shows the direction of the wind by the length of the "bars" or "petals." A day with consistent wind directions will have one or two long petals. A day with different wind directions will have many shorter similar-length petals. For instance, a day with one long petal pointing north (N) means that winds mainly blew from the north in a southerly direction. The Wind Rose also shows a percentage (%) of time during which the wind blew in one direction or another.

Dust Monitoring



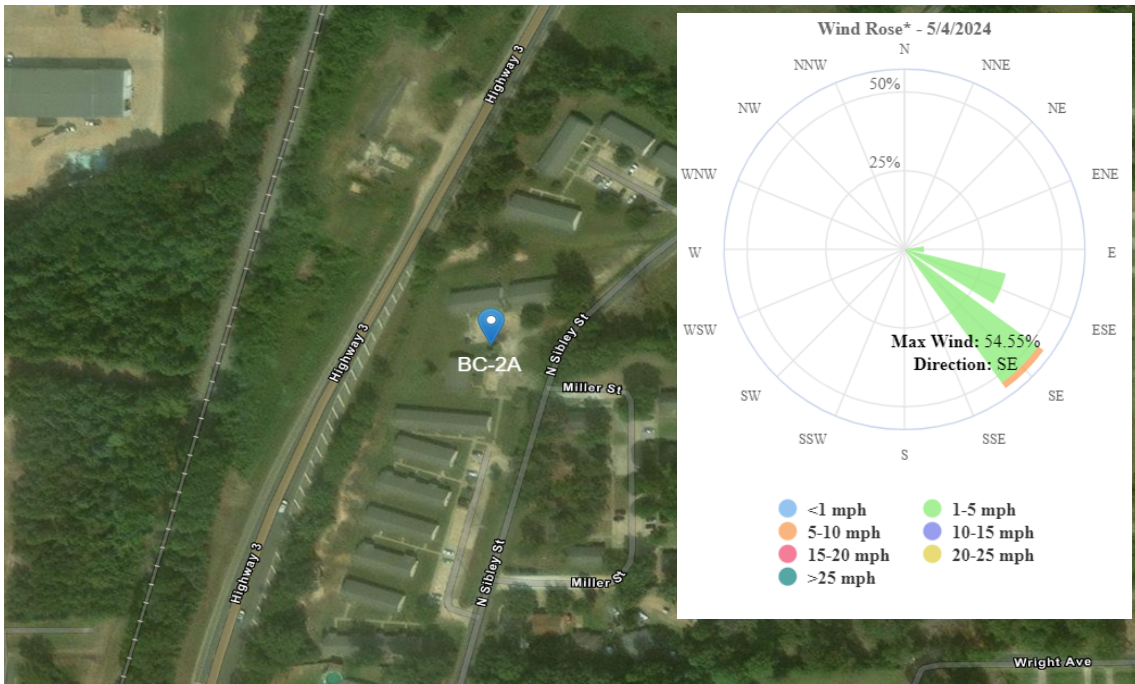
Stat	Reading (ug/m3)	Time Occurred
Min	1.091	8:25:20 AM
Max	23.83	8:50:20 AM
Avg	18.90	5/4/2024
Comments	The site's generator stopped working at approximately 1000 hours on this date and therefore no perimeter air monitoring data could be recorded after that time. The generator is currently under repair.	



Benton Creosote

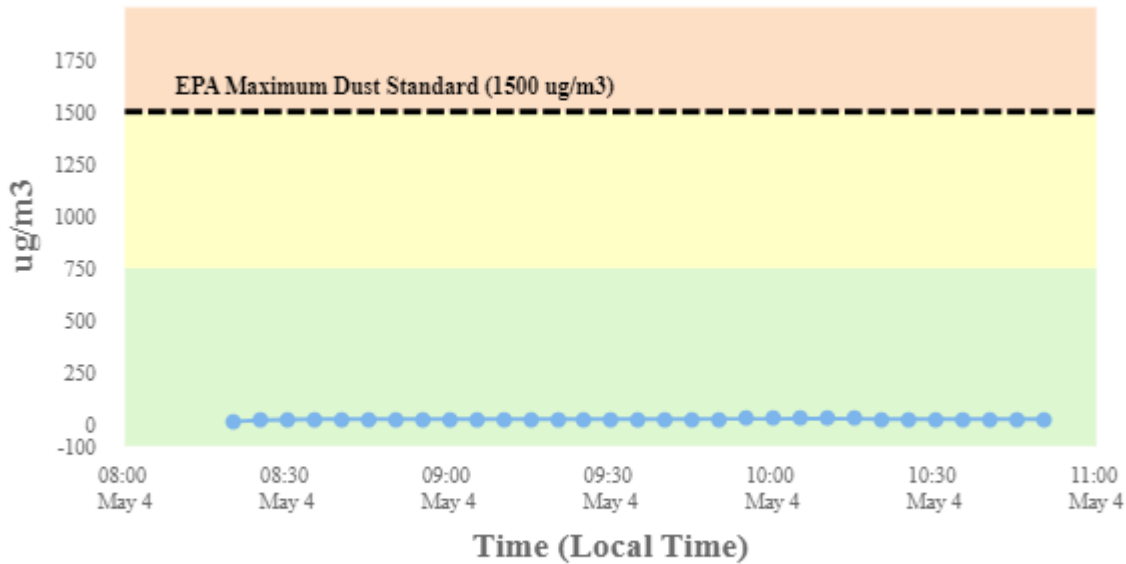
Perimeter Air Monitoring Daily Report (5/4/2024)

For Location BC-2A



To better understand in what direction and how strong the wind is blowing at the Benton Creosote Site, please see the Wind Rose (shown in the top righthand corner of the map). A Wind Rose is a vivid chart showing the wind's direction, its frequency, and its speed at a specific location. A Wind Rose shows the direction of the wind by the length of the "bars" or "petals." A day with consistent wind directions will have one or two long petals. A day with different wind directions will have many shorter similar-length petals. For instance, a day with one long petal pointing north (N) means that winds mainly blew from the north in a southerly direction. The Wind Rose also shows a percentage (%) of time during which the wind blew in one direction or another.

Dust Monitoring



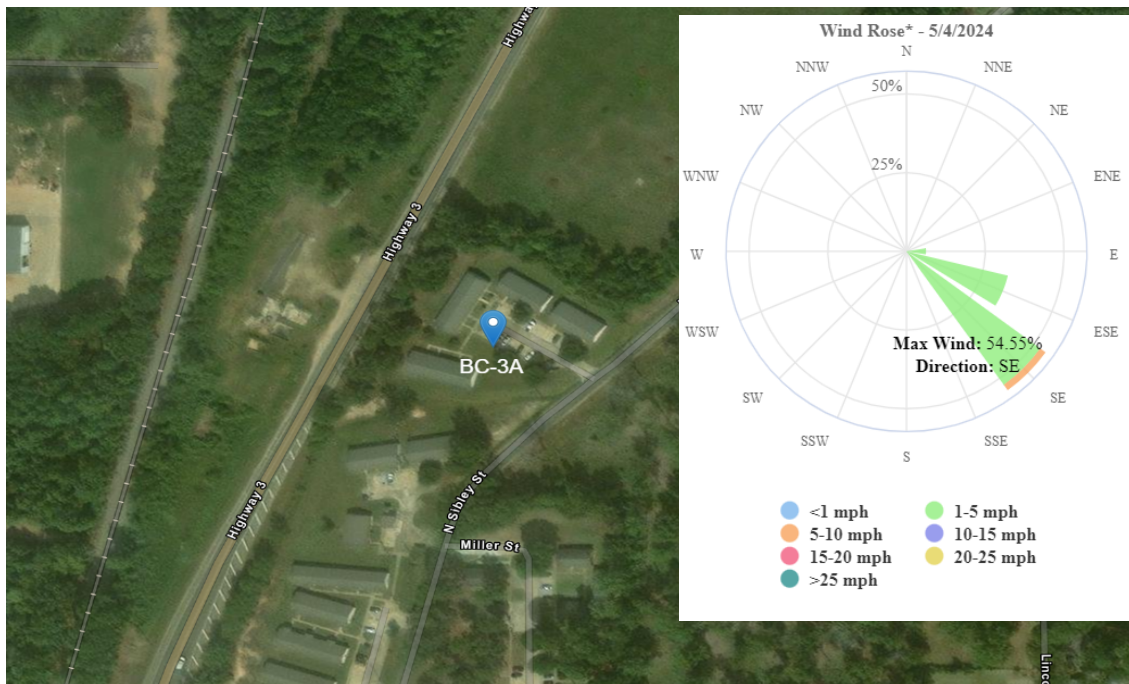
Stat	Reading (ug/m3)	Time Occurred
Min	13.2	8:20:20 AM
Max	25.57	10:05:20 AM
Avg	23.61	5/4/2024
Comments	The site's generator stopped working at approximately 1000 hours on this date and therefore no perimeter air monitoring data could be recorded after that time. The generator is currently under repair.	



Benton Creosote

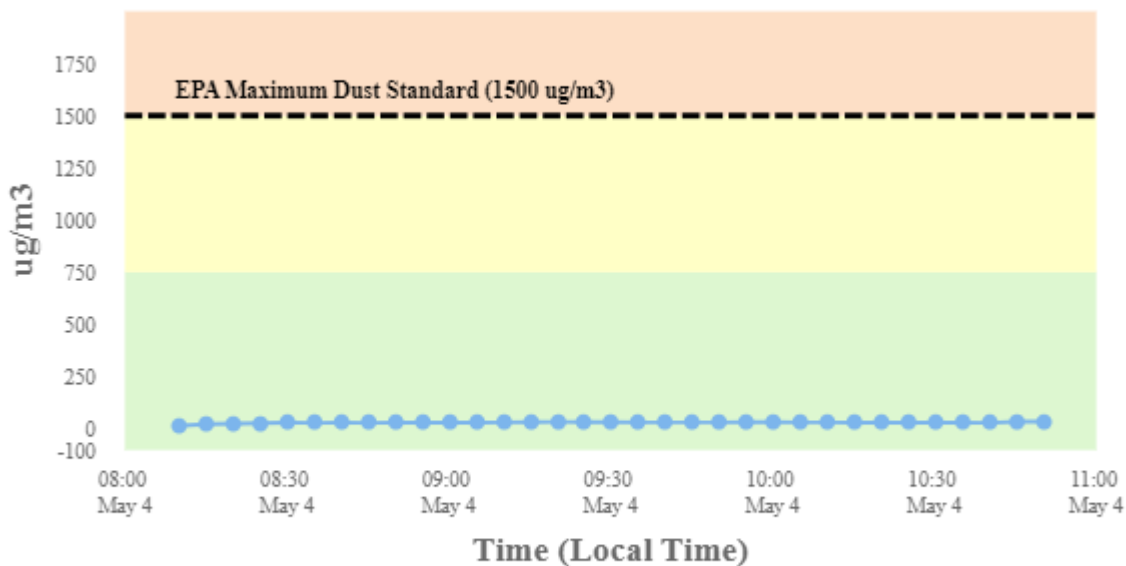
Perimeter Air Monitoring Daily Report (5/4/2024)

For Location BC-3A



To better understand in what direction and how strong the wind is blowing at the Benton Creosote Site, please see the Wind Rose (shown in the top righthand corner of the map). A Wind Rose is a vivid chart showing the wind's direction, its frequency, and its speed at a specific location. A Wind Rose shows the direction of the wind by the length of the "bars" or "petals." A day with consistent wind directions will have one or two long petals. A day with different wind directions will have many shorter similar-length petals. For instance, a day with one long petal pointing north (N) means that winds mainly blew from the north in a southerly direction. The Wind Rose also shows a percentage (%) of time during which the wind blew in one direction or another.

Dust Monitoring



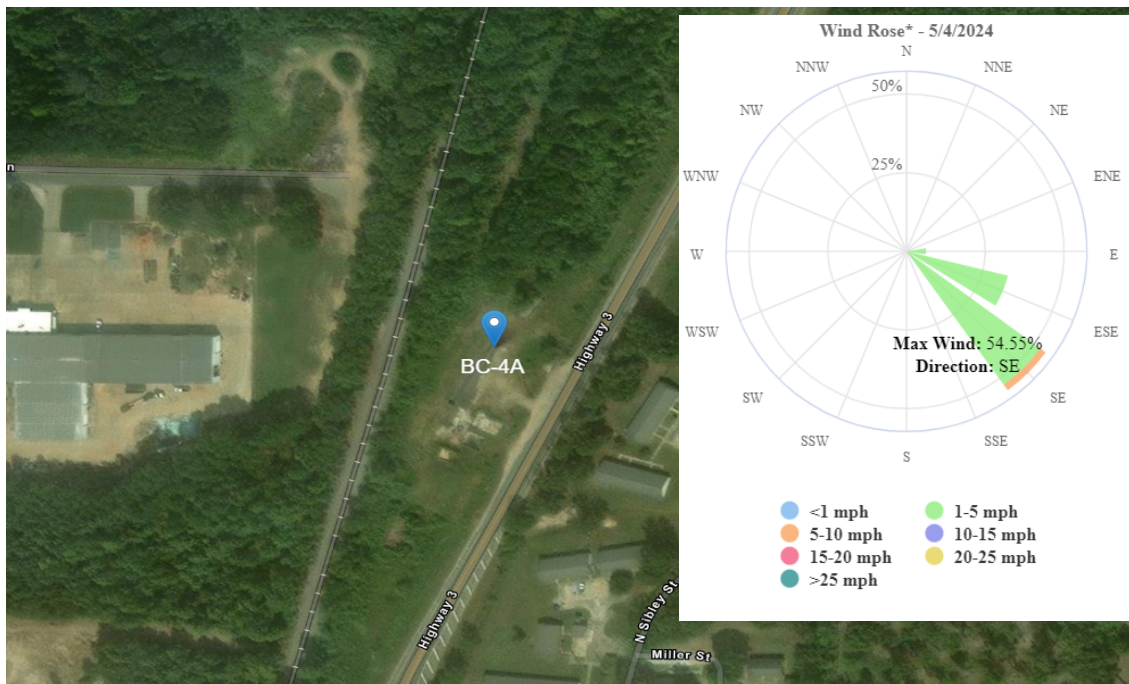
Stat	Reading (ug/m3)	Time Occurred
Min	11.36	8:10:20 AM
Max	30.36	10:45:20 AM
Avg	26.09	5/4/2024
Comments	The site's generator stopped working at approximately 1000 hours on this date and therefore no perimeter air monitoring data could be recorded after that time. The generator is currently under repair.	



Benton Creosote

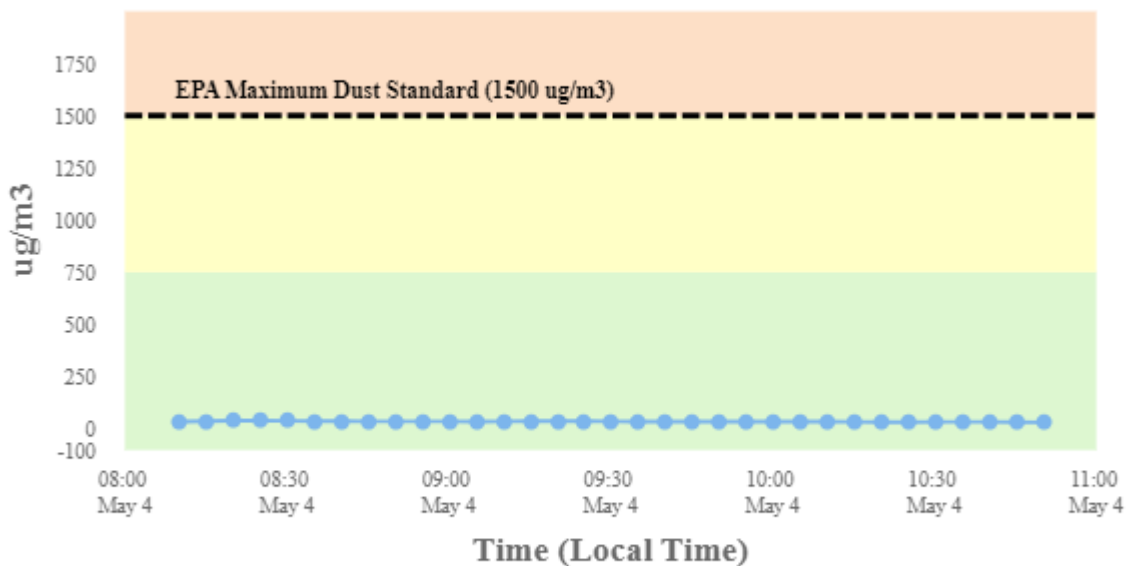
Perimeter Air Monitoring Daily Report (5/4/2024)

For Location BC-4A



To better understand in what direction and how strong the wind is blowing at the Benton Creosote Site, please see the Wind Rose (shown in the top righthand corner of the map). A Wind Rose is a vivid chart showing the wind's direction, its frequency, and its speed at a specific location. A Wind Rose shows the direction of the wind by the length of the "bars" or "petals." A day with consistent wind directions will have one or two long petals. A day with different wind directions will have many shorter similar-length petals. For instance, a day with one long petal pointing north (N) means that winds mainly blew from the north in a southerly direction. The Wind Rose also shows a percentage (%) of time during which the wind blew in one direction or another.

Dust Monitoring



Stat	Reading (ug/m3)	Time Occurred
Min	28.43	10:45:20 AM
Max	36.65	8:20:20 AM
Avg	31.80	5/4/2024
Comments	The site's generator stopped working at approximately 1000 hours on this date and therefore no perimeter air monitoring data could be recorded after that time. The generator is currently under repair.	