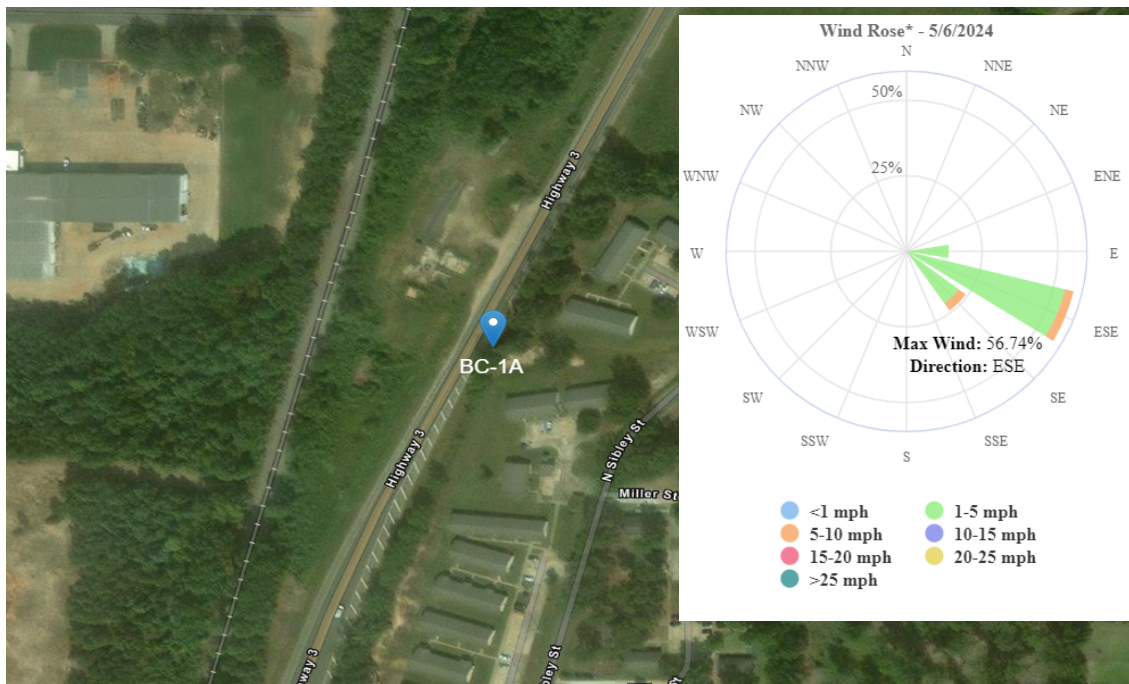




Benton Creosote

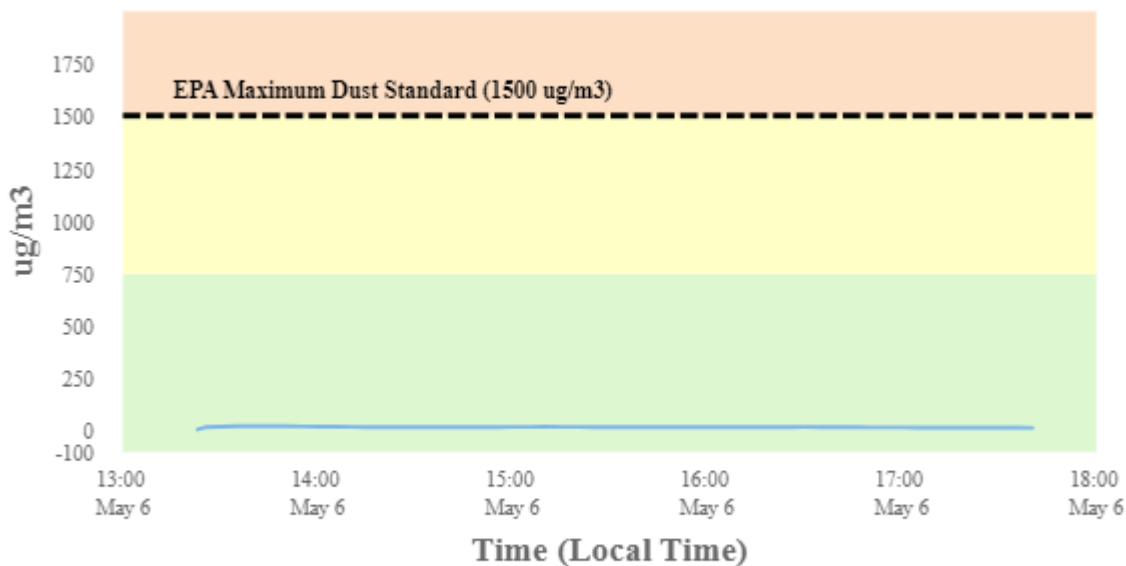
Perimeter Air Monitoring Daily Report (5/6/2024)

For Location BC-1A



To better understand in what direction and how strong the wind is blowing at the Benton Creosote Site, please see the Wind Rose (shown in the top righthand corner of the map). A Wind Rose is a vivid chart showing the wind's direction, its frequency, and its speed at a specific location. A Wind Rose shows the direction of the wind by the length of the "bars" or "petals." A day with consistent wind directions will have one or two long petals. A day with different wind directions will have many shorter similar-length petals. For instance, a day with one long petal pointing north (N) means that winds mainly blew from the north in a southerly direction. The Wind Rose also shows a percentage (%) of time during which the wind blew in one direction or another.

Dust Monitoring



Stat	Reading (ug/m3)	Time Occurred
Min	2.152	1:23:00 PM
Max	19.43	1:40:20 PM
Avg	13.69	5/6/2024
Comments	No contaminated soil was moved on the site or excavated in Palmetto Place Apartments until 1340hrs. START conducted perimeter air monitoring at 1320hrs prior to ERRS beginning excavation activities.	



Benton Creosote

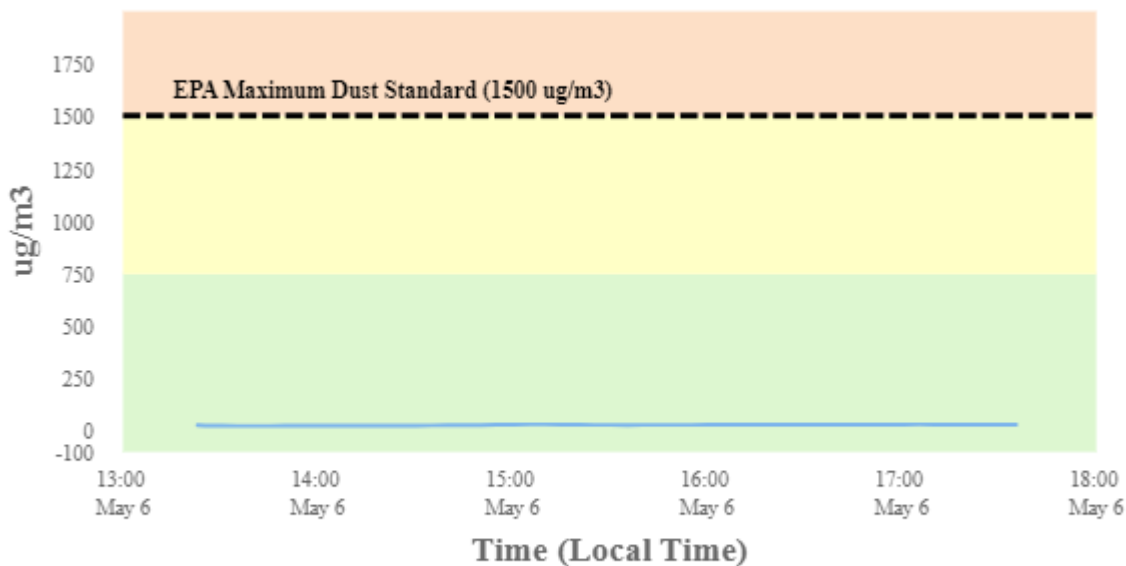
Perimeter Air Monitoring Daily Report (5/6/2024)

For Location BC-2A



To better understand in what direction and how strong the wind is blowing at the Benton Creosote Site, please see the Wind Rose (shown in the top righthand corner of the map). A Wind Rose is a vivid chart showing the wind's direction, its frequency, and its speed at a specific location. A Wind Rose shows the direction of the wind by the length of the "bars" or "petals." A day with consistent wind directions will have one or two long petals. A day with different wind directions will have many shorter similar-length petals. For instance, a day with one long petal pointing north (N) means that winds mainly blew from the north in a southerly direction. The Wind Rose also shows a percentage (%) of time during which the wind blew in one direction or another.

Dust Monitoring



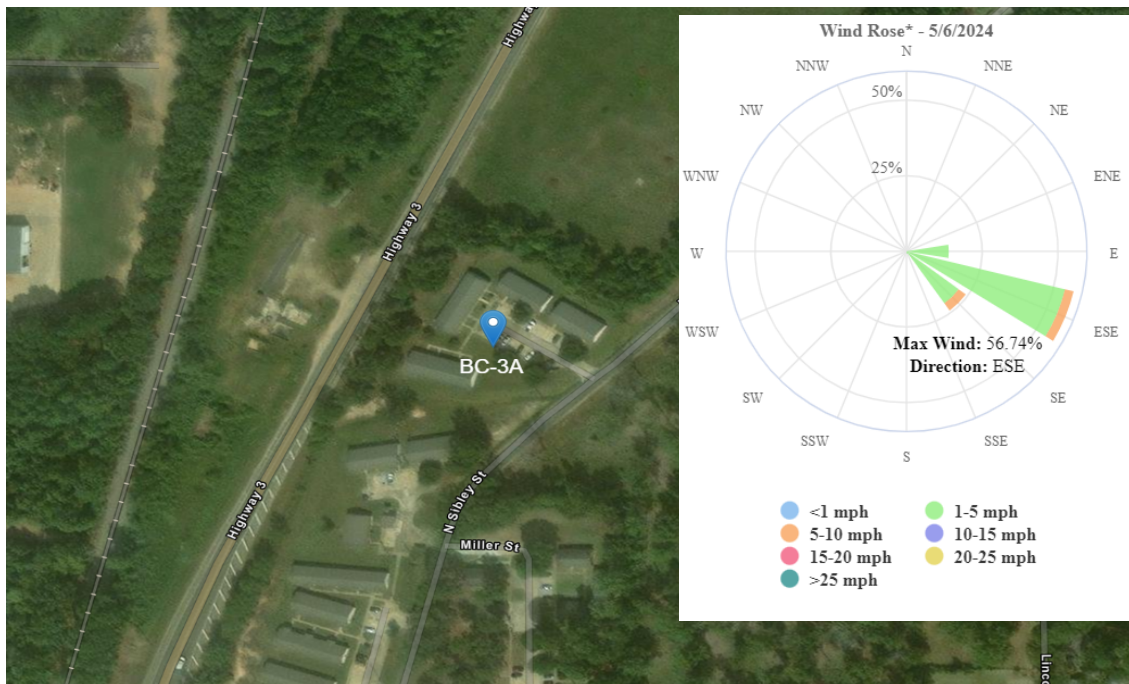
Stat	Reading (ug/m3)	Time Occurred
Min	19.11	1:40:20 PM
Max	26.37	3:10:20 PM
Avg	23.58	5/6/2024
Comments	No contaminated soil was moved on the site or excavated in Palmetto Place Apartments until 1340hrs. START conducted perimeter air monitoring at 1320hrs prior to ERRS beginning excavation activities.	



Benton Creosote

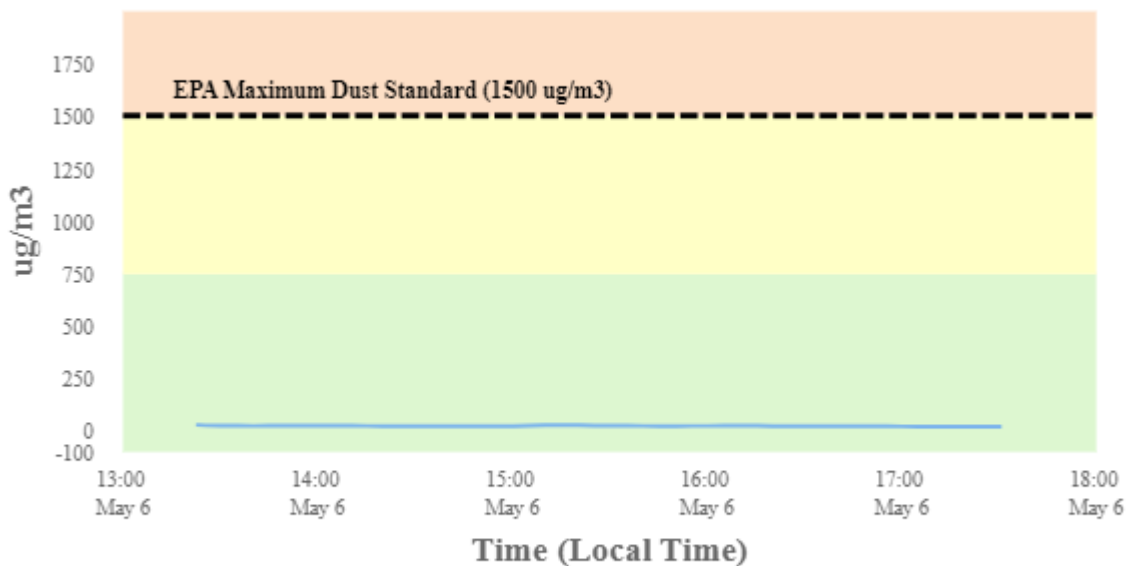
Perimeter Air Monitoring Daily Report (5/6/2024)

For Location BC-3A



To better understand in what direction and how strong the wind is blowing at the Benton Creosote Site, please see the Wind Rose (shown in the top righthand corner of the map). A Wind Rose is a vivid chart showing the wind's direction, its frequency, and its speed at a specific location. A Wind Rose shows the direction of the wind by the length of the "bars" or "petals." A day with consistent wind directions will have one or two long petals. A day with different wind directions will have many shorter similar-length petals. For instance, a day with one long petal pointing north (N) means that winds mainly blew from the north in a southerly direction. The Wind Rose also shows a percentage (%) of time during which the wind blew in one direction or another.

Dust Monitoring



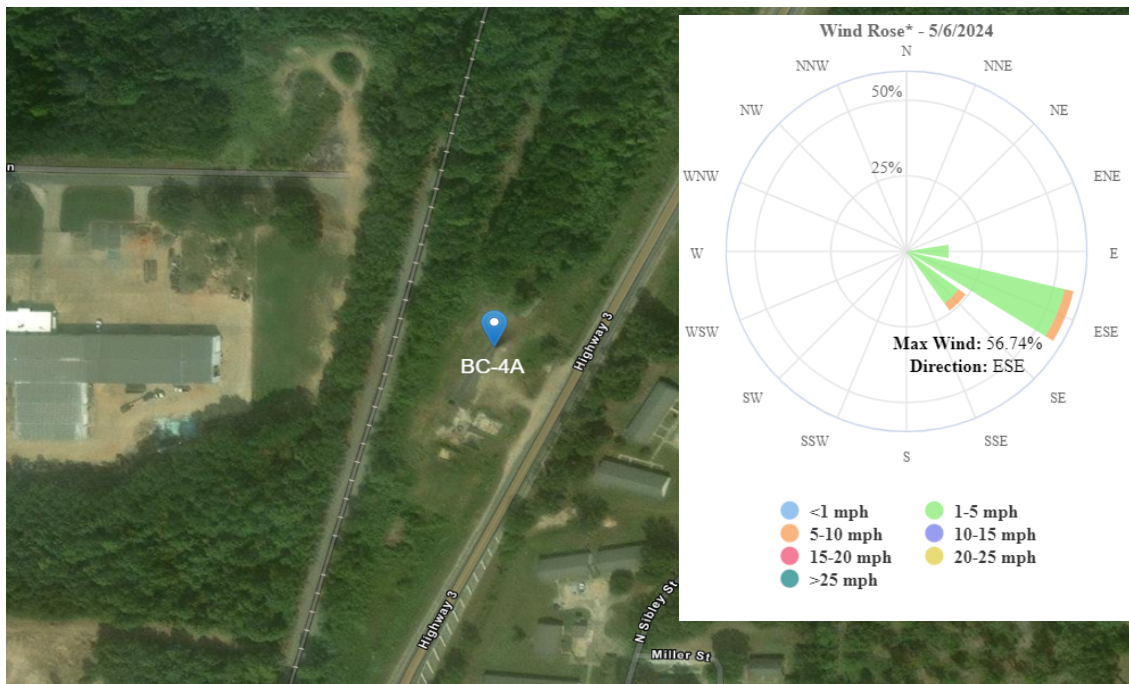
Stat	Reading (ug/m3)	Time Occurred
Min	16.17	5:20:20 PM
Max	24.01	1:23:00 PM
Avg	19.27	5/6/2024
Comments	No contaminated soil was moved on the site or excavated in Palmetto Place Apartments until 1340hrs. START conducted perimeter air monitoring at 1320hrs prior to ERRS beginning excavation activities.	



Benton Creosote

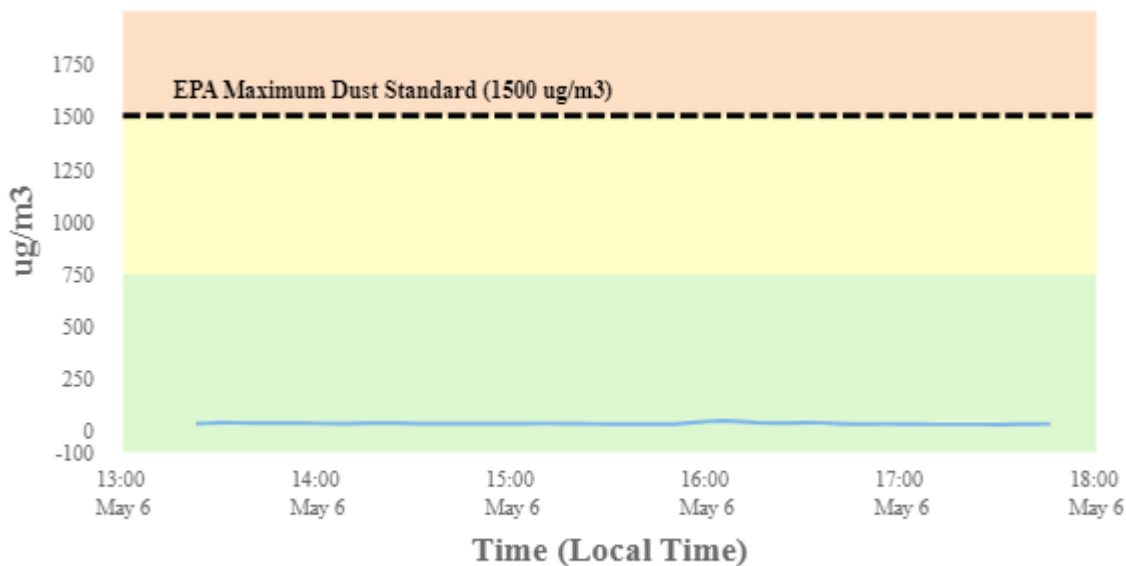
Perimeter Air Monitoring Daily Report (5/6/2024)

For Location BC-4A



To better understand in what direction and how strong the wind is blowing at the Benton Creosote Site, please see the Wind Rose (shown in the top righthand corner of the map). A Wind Rose is a vivid chart showing the wind's direction, its frequency, and its speed at a specific location. A Wind Rose shows the direction of the wind by the length of the "bars" or "petals." A day with consistent wind directions will have one or two long petals. A day with different wind directions will have many shorter similar-length petals. For instance, a day with one long petal pointing north (N) means that winds mainly blew from the north in a southerly direction. The Wind Rose also shows a percentage (%) of time during which the wind blew in one direction or another.

Dust Monitoring



Stat	Reading (ug/m3)	Time Occurred
Min	26.1	5:30:20 PM
Max	44.03	4:05:20 PM
Avg	30.81	5/6/2024
Comments	No contaminated soil was moved on the site or excavated in Palmetto Place Apartments until 1340hrs. START conducted perimeter air monitoring at 1320hrs prior to ERRS beginning excavation activities.	